

Product datasheet for **RC203732**

YY1AP1 (NM_139119) Human Tagged ORF Clone

Product data:

| | |
|---------------------------|---|
| Product Type: | Expression Plasmids |
| Product Name: | YY1AP1 (NM_139119) Human Tagged ORF Clone |
| Tag: | Myc-DDK |
| Symbol: | YY1AP1 |
| Synonyms: | GRNG; HCCA1; HCCA2; YY1AP |
| Mammalian Cell Selection: | Neomycin |
| Vector: | pCMV6-Entry (PS100001) |
| E. coli Selection: | Kanamycin (25 ug/mL) |



[View online »](#)

ORF Nucleotide Sequence:

>RC203732 ORF sequence
 Red=Cloning site Blue=ORF Green=Tags(s)

TTTTGTAATACGACTCACTATAGGGCGGCCGGAATTCGTCGACTGGATCCGGTACCGAGGAGATCTGCC
 GCC**CGGATCGCC**

ATGGAAGATCTGTTTGAACCTTTCCAAGATGAGATGGATTCTCCAACATGGAAGATGATGGCCAGAAG
 AGGAGGAGCGTGTGGCTGAGCCTCAAGCTAACTTTAACACCCCTCAAGCTCTACGGTTTGAGGAACACT
 GGCCAACCTACTAAATGAACAACATCAGATAGCGAAGGAAGTATTTGAACAGCTGAAGATGAAGAAACCT
 TCAGCCAAACAGCAGAAGGAGGTAGAGAAGGTTAAACCCAGTGTAAAGGAAGTTCATCAGACCCTGATTC
 TGGACCCAGCACAAAGGAAGAGACTCCAGCAGCAGATGCAGCAGCATGTTGAGCTTTGACACAAATCCA
 CCTTCTTGCCACCTGCAACCCCAATCTCAATCCGGAGGCCAGTAGCACCAGGATATGTCTTAAAGAGCTG
 GGAACCTTTGCTCAAAGCTCCATCGCCCTTACCATCAGTACAACCCCAAGTTTCAGACCCTGTTCCAAC
 CCTGTAACCTGATGGGAGCTATGCAGCTGATTGAAGACTTCAGCACACATGTCAGCATTGACTGCAGCCC
 TCATAAACTGTCAAGAAGACTGCCAATGAATTTCCCTGTTTGCCAAAGCAAGTGGCTTGGATCCTGGCC
 ACAAGCAAGGTTTTTCATGTATCCAGAGTACTTCCAGTGTGTTCCCTGAAGGCAAAGAATCCCCAGGATA
 AGATCCTCTTACCAAGGCTGAGGACAATTTGTTAGCTTTAGGACTGAAGCATTTTGAAGGGACTGAGTT
 TCTTAACCTCTAATCAGCAAGTACCTTCTAACCTGCAAGACTGCCCGCCAACTGACAGTGAGAATCAAG
 AACCTCAACATGAACAGAGCTCCTGACAACATCATTAAATTTTATAAGAAGACCAACAGCTGCCAGTCC
 TAGGAAAATGCTGTGAAGAGATCCAGCCACATCAGTGGAGCCACCTATAGAGAGAGAAGAACACCGGCT
 CCCATTCTGGTTAAAGGCCAGTCTGCCATCCATCCAGGAAGAAGTGGCCACATGGCTGATGGTGTAGA
 GAGGTAGGAAATGACTGGAACCACTGAGATCAACTCAGATCAAGGCCTAGAAAAGACAACACTCAGAGT
 TGGGGAGTGAAACTCGGTACCCACTGCTATTGCCTAAGGGTGTAGTCTGAAACTGAAGCCAGTTGCCGA
 CCGTTTTCCCAAGAAGGCTTGGAGACAGAAGCGTTCATCAGTCCGAAACCCCTCCTTATCCAACCCAGC
 CCCTCTCTCCAGCCAGCTTCAACCTGGGAAAACACCAGCCCAATCAACTCATTAGAAGCCCTCCGA
 GCAAAATGGTGTCCGGATTCTCACCCAAACAGCCAGCCACTGTTTTACAGACAGTTCAGGTGTCCC
 TCCACTGGGGTTCAGTGGAGGTGAGAGTTTTGAGTCTCCTGCAGCACTGCCTGCTATGCCCCCTGAGGCC
 AGGACAAGCTTCCCTCTGTCTGAGTCCCAGACTTTGCTCTCTTCTGCCCTGTGCCCAAGGTAATGATGC
 CCTCCCCTGCCTTCCATGTTTCGAAAGCCATATGTGAGACGGAGACCCTCAAAAAGAAGGGGAGCCAG
 GGCTTTTCGCTGTATCAAACCTGCCCTGTTATCCACCCTGCATCTGTTATCTTCACTGTTCTCTGCTACC
 ACTGTGAAGATTGTGAGCCTTGGCGGTGGCTGTAACATGATCCAGCCTGTCAATGCGGCTGTGGCCAGA
 GTCCCCAGACTATCCCATCGCCACCCTTGGTTAACCTACTTCCCTCCCCTGTCCATTGAACCAGCC
 CCTTGTGGCCTCCTCTGTCTCACCTTAATTGTTTCTGGCAATTCTGTGAATCTTCTATACCATCCACC
 CCTGAAGATAAGGCCACATGAATGTGGACATTGCTTGTGCTGTGGCTGATGGGGAAAATGCCTTTCAGG
 GCCTAGAACCCTAATTAGAGCCCCAGGAAGTATCTCCTCTCTGCTACTGTTTTCCCAAGTGGAAACA
 TAGCCCAGGGCCTCCACCAGTCGATAAACAGTGCCAAGAAGGATTGTGAGAGAACAGTGCCTATCGCTGG
 ACCGTTGTGAAAACAGAGGAGGGAAGGCAAGCTCTGGAGCCGCTCCCTCAGGGCATCCAGGAGTCTCTAA
 ACAACTCTTCCCCTGGGATTTAGAGGAAGTTGTCAAGATGGAACCTGAAGATGCTACAGAGGAAATCAG
 TGGATTTCTT

ACGCGTACGCGGCCGCTCGAGCAGAAACTCATCTCAGAAGAGGATCTGGCAGCAAATGATATCCTGGATT
 ACAAGGATGACGACGATAAGGTTTAA

Protein Sequence: >RC203732 protein sequence
Red=Cloning site Green=Tags(s)

```
MEDLFETFQDEMGSNMEDDGPEEEERVAEPQANFNTPQALRFEELLANLLNEQHQIAKELFEQLKMKKP
SAKQQKEVEKVKPQCKEVHQTLLDPAQRKRLQQMQQHVQLLTQIHLLATCNPNLNPEASSTRICKEL
GTFAQSSIALHHQYNPKFQTLFQPCNLGMAMQLIEDFSTHVSIDCSPHKTVKKTANEFPCLPKQVAWILA
TSKVFMYPELLPVCSLKAKNPQDKILFKAEDNLLALGLKHFEGTEFLNPLISKYLLTCKTARQLTVRIK
NLNMNRAPDNIKIFYKTKQLPVLGKCCEEIQPHQWKPPIEREEHRLPFWLKASLPSIQEELRHMDGAR
EVGNMTGTTEINSDQGLEKDNSELGSETRYPLLLPKGVVLKLPVADRFPKAWRQKRSSVLKPLLIQPS
PSLQPSFNPQKTPAQSTHSEAPPSKMLRIPHPIQPATVLTQVPGVPLGVSGGESFESPAALPAMPPEA
RTSFPLSESQTLSSAPVPKVMMPSPASSMFRKPYVRRRPSKRRGARAFRCIKPAPVIHPASVIFTVPAT
TVKIVSLGGGCNMIQPVNAAVAQSPQTIPIATLLVNPTSFPCPLNQPLVASSVSPLIVSGNSVNLPIPST
PEDKAHMNVDIACAVADGENAFQGLEPKLEPQEL SPLSATVFPKVEHSPGPPVVKQCEGLSENSAYRW
TVVKTEEGRQALEPLPQGIQESLNNSSPGDLEEVKMEPEDATEEISGFL
```

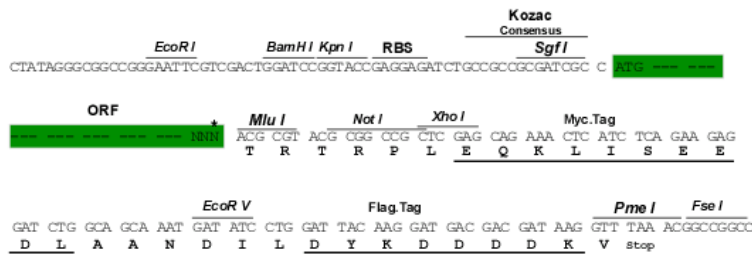
TRTRPLEQKLISEEDLANDILDYKDDDDKV

Chromatograms: https://cdn.origene.com/chromatograms/mk6344_a11.zip

Restriction Sites: SgfI-MluI

Cloning Scheme:

Cloning sites used for ORF Shuttling:



ACCN: NM_139119

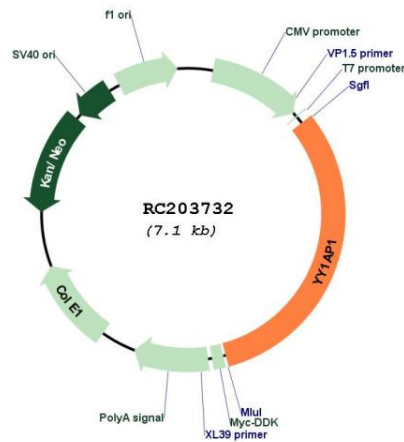
ORF Size: 2250 bp

OTI Disclaimer: The molecular sequence of this clone aligns with the gene accession number as a point of reference only. However, individual transcript sequences of the same gene can differ through naturally occurring variations (e.g. polymorphisms), each with its own valid existence. This clone is substantially in agreement with the reference, but a complete review of all prevailing variants is recommended prior to use. [More info](#)

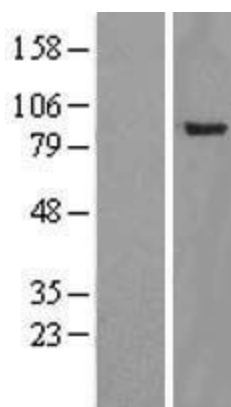
OTI Annotation: This clone was engineered to express the complete ORF with an expression tag. Expression varies depending on the nature of the gene.

| | |
|-------------------------------|---|
| Components: | The ORF clone is ion-exchange column purified and shipped in a 2D barcoded Matrix tube containing 10ug of transfection-ready, dried plasmid DNA (reconstitute with 100 ul of water). |
| Reconstitution Method: | <ol style="list-style-type: none">1. Centrifuge at 5,000xg for 5min.2. Carefully open the tube and add 100ul of sterile water to dissolve the DNA.3. Close the tube and incubate for 10 minutes at room temperature.4. Briefly vortex the tube and then do a quick spin (less than 5000xg) to concentrate the liquid at the bottom.5. Store the suspended plasmid at -20°C. The DNA is stable for at least one year from date of shipping when stored at -20°C. |
| Note: | Plasmids are not sterile. For experiments where strict sterility is required, filtration with 0.22um filter is required. |
| RefSeq: | NM_139119.2 , NP_620830.1 |
| RefSeq Size: | 2749 bp |
| RefSeq ORF: | 2253 bp |
| Locus ID: | 55249 |
| UniProt ID: | Q9H869 |
| Cytogenetics: | 1q22 |
| MW: | 83.1 kDa |
| Gene Summary: | The encoded gene product presumably interacts with YY1 protein; however, its exact function is not known. Alternative splicing results in multiple transcript variants encoding different isoforms. [provided by RefSeq, Jul 2008] |

Product images:



Circular map for RC203732



Western blot validation of overexpression lysate (Cat# [LY408421]) using anti-DDK antibody (Cat# [TA50011-100]). Left: Cell lysates from untransfected HEK293T cells; Right: Cell lysates from HEK293T cells transfected with RC203732 using transfection reagent MegaTran 2.0 (Cat# [TT210002]).