

Product datasheet for **RC203727**

CTTNBP2NL (NM_018704) Human Tagged ORF Clone

Product data:

Product Type:	Expression Plasmids
Product Name:	CTTNBP2NL (NM_018704) Human Tagged ORF Clone
Tag:	Myc-DDK
Symbol:	CTTNBP2NL
Mammalian Cell Selection:	Neomycin
Vector:	pCMV6-Entry (PS100001)
E. coli Selection:	Kanamycin (25 ug/mL)



[View online »](#)

ORF Nucleotide
Sequence:

>RC203727 ORF sequence
Red=Cloning site Blue=ORF Green=Tags(s)

TTTTGTAATACGACTCACTATAGGGCGGCCGGAATTCGTCGACTGGATCCGGTACCGAGGAGATCTGCC
GCCCGCATCGCC

ATGAATCTGGAAAACTCAGCAAGCCTGAACCTCTGACACTATTTAGTATTCTTGAAGGAGAGCTTGAAG
CAAGGGACCTTGTATAGAAGCCTTAAAGGCCAACACAGAGATACTTTCATTGAAGAACGCTATGGAAA
ATATAACATCAGTGATCCTTTAATGGCTCTACAGAGAGATTTTGAACACTGAAGGAGAAAAATGATGGC
GAAAAGCAGCCAGTCTGCACAAACCCACTCTCTATTCTTAAGGTTGTGATGAAGCAGTGCAAGAATGC
AGGAGCGCATGTGTCCAGCTGGCTGTGCTGAGAGCAGGCACCGAAAGGTGATCTAGACCTTGAGGA
AGAAAGGCAGCGGCATGCACAGGATACGGCTGAAGGAGATGATGCACCTACATGCTAGAGAAGGAAAGA
GAGAGGCTGACTCAACAGTTGGAATTTGAAAAATCCCAAGTAAAAAGTTTAAAAAGAACAGAAGAAGC
TCTCTAGTCAGCTGGAAGAGGAGCGCTCCCGCCACAAGCAGCTCTCATCCATGCTAGTGTCTGAGTGCAA
GAAAGCCACCAACAAGGCAGCCGAGGAAGGACAGAAGGCAGGAGAGCTGAGCCTGAAATTTGAGAAGGAG
AAGAGCCGGGTGAGTAACTGGAAGAAGAGTTGGCAGCTGAGAGAAAGAGAGGCTTGCAGACTGAGGCC
AGGTAGAGAAGCAGTTATCAGAGTTTGACATCGAAAGGGAACAACCTGAGAGCAAACTGAACCGAGAAGA
GAACCGGACCAAAAACCTGAAAGAAGAAATGGAAGTTTAAAGAAGATAGTGAAGGACCTAGAGGCTTCC
CACCAGCACAGTAGCCCTAATGAGCAATTGAAGAAACAGTAACCGTGTCCAAAGGCACAGCAACTGAGC
CTCTCATGCTAATGTCTGTGTTTTGCCAAACAGAGAGTTTTCCAGCAGAAAGAACCCATGGGAGCAACAT
AGCCAAGATGACAAACTGGGCTGCCTGGTCTGCCACTCTGCTTACTCATATGCAAAAACCAATGGC
CATTGTGACCCAGAGATACAACTACCAGGGAGCTGACTGCAGGCAACAATGTAGAAAACCAAGTGCCTC
CACGGGAAAAATCTGTGGCATTGGCCCAAGAGAAACAGTGGAGAATGGTGGGTGCTCTGTGGGATTGA
GACTCCAGTCCCAATGCCAGTCCCTCTCTCCAGTGGGAGCTCACTGTCTCCAGCAGCACTGCCTCC
TCCTCTAACATCCTCTCCTTGCTCTTCGCGGTACTACTAAGCGTTTATTGGGGTCATCAGCTAGCA
GCCCTGGTACCAGTCATCGTACCAAGTAGGGATCAACCAACGGTTCCATGCAGCTCGCCACAAATTTCA
GTCCCAAGCAGATCAGGACCAACAAGCCAGTGGCTACAGAGCCCTCCATCCAGGGATTTATCCCCACC
CTCATAGACAACCTGCCGCAAGCAGCTGGCCGAAACACAGTCACTCAGGTGCTCTCCAGATTCATA
GCCAACAAAGGGCAATCAAGCCAGTCTCTCCAACAGCTCTCCCTTTGGCACAGACTATCGAAATCTAGC
CAACACTGCCAATCAAGAGGTGACACAAGCCATTACCTACTCCAGGAAAGTGTCCAGTCCCCTGAGC
CCCCTGTCTCCAGGAATCAAGTCCCAACCATCCCAGAGCTGAGAGAGGAAACCTCCACCCATCCCAC
CCAAGAAACCTGGCTCACCCCTTCTCCATCTGCTACCACTCCATTGACCAAACTCATTCCAGGCAGC
CTCTTTGACCACTGCAGAAGACCTTGCCAGCAGCTGCTTCCAATACTGTTGTAGCAAATGGTAAGGAT
GTTGAGTTACTTTTGCTACCAGCAGC

ACGCGTACGCGGCCGCTCGAGCAGAACTCATCTCAGAAGAGGATCTGGCAGCAATGATATCCTGGATT
ACAAGGATGACGACGATAAGGTTTAA

Protein Sequence: >RC203727 protein sequence
Red=Cloning site Green=Tags(s)

MNLEKLSKPELLTLFSILEGELEARDLVIEALKAQHRDTFIEERYGKYNISDPLMALQRDFETLKEKNDG
 EKQPVCTNPLSILKVVVKQCKNMQERMLSQLAAAE SRHRKVILDLEERQRHAQDTAEGDDVTYMLEKER
 ERLTQQLFEFKSQVKKFEKEQKKLSSQLEEERSRHKQLSSMLVLECKKATNKAAEEGQKAGELSLKLEKE
 KSRVSKLEEEELAAERKRGLQTEAQVEKQLSEFDIEREQLRAKLNREENRTKTLKEEMESLKKIVKDLEAS
 HQHSSPNEQLKKPVTVSKGTATEPLMLMSVFCQTESFPAERTHGSNIAKMTNTGLPGPATPAYSYAKTNG
 HCDPEIQTTRELTAGNNVENQVPPREKSVALAQEKPVENGCPVGIETPVPMPSPSSSGSSLSPSSTAS
 SSSLTSSPCSSPVLTKRLLGSSASSPGYQSSYQVGINQRFHAARHKFQSQAQDQDQASGLQSPPSRDLSP
 LIDNSAAQLARNTVTQVLSRFTSQGPVKPVPNSPFGTDYRNLANTANPRGDTSHSPTPKGVSSPLS
 PLSPGIKSPTIPRAERGNPPPIPPKKPGLTPSPSATTPLTKTHSQASLTTAEDLASSCSSNTVVANGKD
 VELLPTSS

TRTRPLEQKLISEEDLAANDILDYKDDDDKV

Chromatograms: https://cdn.origene.com/chromatograms/mk6306_b09.zip

Restriction Sites: SgfI-MluI

Cloning Scheme:

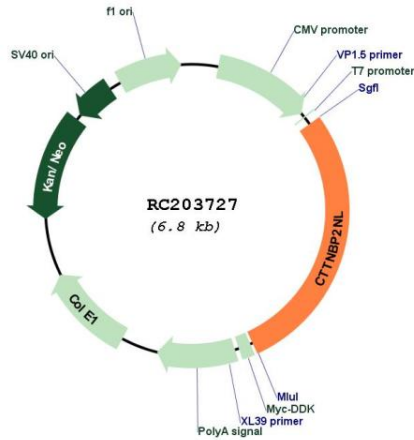


ACCN: NM_018704

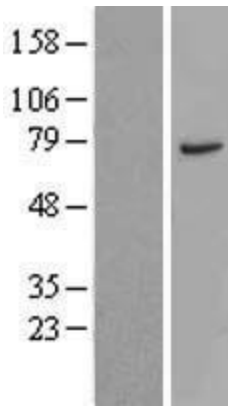
ORF Size: 1917 bp

OTI Disclaimer:	<p>Due to the inherent nature of this plasmid, standard methods to replicate additional amounts of DNA in E. coli are highly likely to result in mutations and/or rearrangements. Therefore, OriGene does not guarantee the capability to replicate this plasmid DNA. Additional amounts of DNA can be purchased from OriGene with batch-specific, full-sequence verification at a reduced cost. Please contact our customer care team at custsupport@origene.com or by calling 301.340.3188 option 3 for pricing and delivery.</p> <p>The molecular sequence of this clone aligns with the gene accession number as a point of reference only. However, individual transcript sequences of the same gene can differ through naturally occurring variations (e.g. polymorphisms), each with its own valid existence. This clone is substantially in agreement with the reference, but a complete review of all prevailing variants is recommended prior to use. More info</p>
OTI Annotation:	<p>This clone was engineered to express the complete ORF with an expression tag. Expression varies depending on the nature of the gene.</p>
Components:	<p>The ORF clone is ion-exchange column purified and shipped in a 2D barcoded Matrix tube containing 10ug of transfection-ready, dried plasmid DNA (reconstitute with 100 ul of water).</p>
Reconstitution Method:	<ol style="list-style-type: none">1. Centrifuge at 5,000xg for 5min.2. Carefully open the tube and add 100ul of sterile water to dissolve the DNA.3. Close the tube and incubate for 10 minutes at room temperature.4. Briefly vortex the tube and then do a quick spin (less than 5000xg) to concentrate the liquid at the bottom.5. Store the suspended plasmid at -20°C. The DNA is stable for at least one year from date of shipping when stored at -20°C.
Note:	<p>Plasmids are not sterile. For experiments where strict sterility is required, filtration with 0.22um filter is required.</p>
RefSeq:	<p>NM_018704.1, NP_061174.1</p>
RefSeq Size:	<p>5901 bp</p>
RefSeq ORF:	<p>1920 bp</p>
Locus ID:	<p>55917</p>
UniProt ID:	<p>Q9P2B4</p>
Cytogenetics:	<p>1p13.2</p>
MW:	<p>70.2 kDa</p>
Gene Summary:	<p>Regulates lamellipodial actin dynamics in a CTTN-dependent manner.[UniProtKB/Swiss-Prot Function]</p>

Product images:



Circular map for RC203727



Western blot validation of overexpression lysate (Cat# [LY412898]) using anti-DDK antibody (Cat# [TA50011-100]). Left: Cell lysates from untransfected HEK293T cells; Right: Cell lysates from HEK293T cells transfected with RC203727 using transfection reagent MegaTran 2.0 (Cat# [TT210002]).



Coomassie blue staining of purified CTTNBP2NL protein (Cat# [TP303727]). The protein was produced from HEK293T cells transfected with CTTNBP2NL cDNA clone (Cat# RC203727) using MegaTran 2.0 (Cat# [TT210002]).