

Product datasheet for **RC203726**

EFEMP2 (NM_016938) Human Tagged ORF Clone

Product data:

Product Type:	Expression Plasmids
Product Name:	EFEMP2 (NM_016938) Human Tagged ORF Clone
Tag:	Myc-DDK
Symbol:	EFEMP2
Synonyms:	ARCL1B; FBLN4; MBP1; UPH1
Mammalian Cell Selection:	Neomycin
Vector:	pCMV6-Entry (PS100001)
E. coli Selection:	Kanamycin (25 ug/mL)



[View online »](#)

ORF Nucleotide Sequence:

>RC203726 ORF sequence
 Red=Cloning site Blue=ORF Green=Tags(s)

TTTTGTAATACGACTCACTATAGGGCGGCCGGAATTCGTCGACTGGATCCGGTACCGAGGAGATCTGCC
 GCC**CGATCGCC**

ATGCTCCCTGCGCTCCTGCTACCCGGTCTCTACTGCTCTGGGCGTCTACTGTTGCTCTTGGGAT
 CAGCTTCTCCTCAGGATTCTGAAGAGCCCGACAGCTACACGGAATGCACAGATGGCTATGAGTGGGACCC
 AGACAGCCAGCACTGCCGGGATGTCAACGAGTGTCTGACCATCCCTGAGGCCTGCAAGGGGAAATGAAG
 TGCATCAACCACTACGGGGGCTACTTGTGCTGCCCGCTCCGCTGCCGTCAACGACCTACACGGCG
 AGGGACCCCGCCACCAGTGCCTCCCGCTCAACACCCCAACCCCTGCCACCAGGCTATGAGCCGACGA
 TCAGGACAGTGTGTGGATGTGGACGAGTGTGCCAGGCCCTGCACGACTGTGCCCCAGCCAGGACTGC
 CATAACTGCCTGGCTCCTATCAGTGCACCTGCCCTGATGGTTACCGCAAGATCGGGCCGAGTGTGTGG
 ACATAGACGAGTCCGCTACCGCTACTGCCAGCACCGCTGCGTGAACCTGCCTGGCTCCTCCGCTGCCA
 GTGCGAGCCGGGCTTCCAGCTGGGGCTAACAACCGCTCCTGTGTGATGTGAACGAGTGTGACATGGGG
 GCCCATGCGAGCAGCGCTGTTCAACTCCTATGGGACCTTCCTGTGTCGCTGCCACCAGGGCTATGAGC
 TGCATCGGGATGGCTTCTCCTGCAGTGATATTGATGAGTGTAGCTACTCCAGCTACCTCTGTCAGTACCG
 CTGCGTCAACGAGCCAGGCCGTTTCTCCTGCCACTGCCACAGGGTTACCAGCTGCTGGCCACACGCCCTC
 TGCCAAGACATTGATGAGTGTGAGTCTGGTGCGCACCAAGTGTCCGAGGCCAAACCTGTGTCAACTTCC
 ATGGGGGTACCCTGCGTGGACACCAACCGCTGCGTGGAGCCCTACATCCAGGTCTCTGAGAACCCTG
 TCTTCCCGGCTCAACCCCTATGTGAGAGCAGCCTTACATCCATTGTGACCGCTACATGACCATC
 ACCTCGGAGCGGAGCGTCCCGCTGACGTGTTCCAGATCCAGGCGACCTCCGTCTACCCCGGTGCCTACA
 ATGCCTTTCAGATCCGTGCTGAAACTCGCAGGGGGACTTTTACATTAGGCAAATCAACAACGTGACGCG
 CATGCTGGTCTCGCCCGCCGGTGACGGGCCCGGGAGTACGTGCTGGACTGGAGATGGTCAACATG
 AATTCCCTCATGAGCTACCGGGCCAGCTCTGACTGAGGCTCACCGTCTTTGTAGGGCCTACACCTTC

ACGCGTACGCGGCCGCTCGAGCAGAACTCATCTCAGAAGAGGATCTGGCAGCAAATGATATCCTGGATT
 ACAAGGATGACGACGATAAGGTTTAA

Protein Sequence:

>RC203726 protein sequence
 Red=Cloning site Green=Tags(s)

MLPCASCLPGSLLLWALLLLLGSASPQDSEEPDSYTECTDGYEWDPSQHCRDVNECLTPEACKGEMK
 CINHYGGYLCLPRSAVINDLHGEGPPPPVPPAQHPNCPGYPDDQDSCVDVDECAQALHDCRPSQDC
 HNLPGSYQCTCPDGYRKIGPECVDIDECRYRYCQHRCVNLPGSFRQCCEPGFQLGPNRSCVDVNECDMG
 APCEQRCFNSYGTFLCRCHQGYELHRDGFSCSDIDECSYSSYLQYRCVNEPGRFSCHCPQGYQLLATRL
 CQDIDECESGAHQCSEAQTQVNFHGGYRCVDTNRCVEPYIQVSENRCPCASNPLCREQPSIVHRYMTI
 TSERSVPADVFIQATSYPGAYNAFQIRAGNSQGFYIRQINNVSAMLVLARPVTGPREYVLDLEMVMT
 NSLMSYRASSVLRLTVFVGAYTF

TRTRPLEQKLISEEDLAANDILDYKDDDDKV

Chromatograms:

https://cdn.origene.com/chromatograms/mk6087_d12.zip

Restriction Sites:

SgfI-MluI

Cloning Scheme:


ACCN: NM_016938

ORF Size: 1329 bp

OTI Disclaimer: The molecular sequence of this clone aligns with the gene accession number as a point of reference only. However, individual transcript sequences of the same gene can differ through naturally occurring variations (e.g. polymorphisms), each with its own valid existence. This clone is substantially in agreement with the reference, but a complete review of all prevailing variants is recommended prior to use. [More info](#)

OTI Annotation: This clone was engineered to express the complete ORF with an expression tag. Expression varies depending on the nature of the gene.

Components: The ORF clone is ion-exchange column purified and shipped in a 2D barcoded Matrix tube containing 10ug of transfection-ready, dried plasmid DNA (reconstitute with 100 ul of water).

Reconstitution Method:

1. Centrifuge at 5,000xg for 5min.
2. Carefully open the tube and add 100ul of sterile water to dissolve the DNA.
3. Close the tube and incubate for 10 minutes at room temperature.
4. Briefly vortex the tube and then do a quick spin (less than 5000xg) to concentrate the liquid at the bottom.
5. Store the suspended plasmid at -20°C. The DNA is stable for at least one year from date of shipping when stored at -20°C.

Note: Plasmids are not sterile. For experiments where strict sterility is required, filtration with 0.22um filter is required.

RefSeq: [NM_016938.3](#)

RefSeq Size: 2096 bp

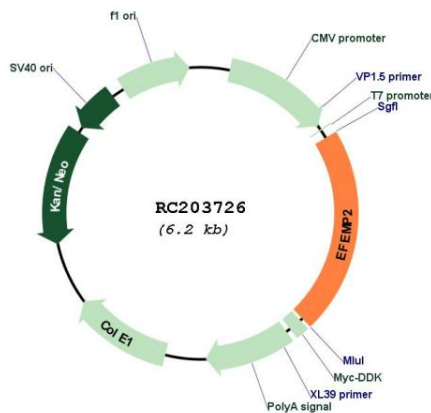
RefSeq ORF: 1332 bp

Locus ID: 30008

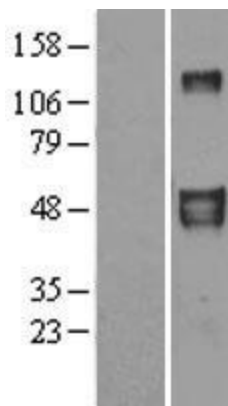
UniProt ID: [O95967](#)
Cytogenetics: 11q13.1
Domains: EGF_CA, EGF, EGF
Protein Families: Druggable Genome, Secreted Protein
MW: 49.4 kDa

Gene Summary: A large number of extracellular matrix proteins have been found to contain variations of the epidermal growth factor (EGF) domain and have been implicated in functions as diverse as blood coagulation, activation of complement and determination of cell fate during development. The protein encoded by this gene contains four EGF2 domains and six calcium-binding EGF2 domains. This gene is necessary for elastic fiber formation and connective tissue development. Defects in this gene are cause of an autosomal recessive cutis laxa syndrome. Alternatively spliced transcript variants have been identified for this gene. [provided by RefSeq, Jan 2011]

Product images:



Circular map for RC203726



Western blot validation of overexpression lysate (Cat# [LY402585]) using anti-DDK antibody (Cat# [TA50011-100]). Left: Cell lysates from untransfected HEK293T cells; Right: Cell lysates from HEK293T cells transfected with RC203726 using transfection reagent MegaTran 2.0 (Cat# [TT210002]).