

## Product datasheet for **RC203724**

### **CENTB1 (ACAP1) (NM\_014716) Human Tagged ORF Clone**

#### **Product data:**

Product Type:	Expression Plasmids
Product Name:	CENTB1 (ACAP1) (NM_014716) Human Tagged ORF Clone
Tag:	Myc-DDK
Symbol:	CENTB1
Synonyms:	CENTB1
Mammalian Cell Selection:	Neomycin
Vector:	pCMV6-Entry (PS100001)
E. coli Selection:	Kanamycin (25 ug/mL)



[View online »](#)

ORF Nucleotide  
Sequence:

>RC203724 ORF sequence  
Red=Cloning site Blue=ORF Green=Tags(s)

TTTTGTAATACGACTCACTATAGGGCGGCCGGGAATTCGTCGACTGGATCCGGTACCGAGGAGATCTGCC  
GCC**CGGATCGCC**

ATGACGGTCAAGCTGGATTTTCGAGGAGTGTCTCAAGGACTCACCCGTTCCGAGCCTCTATTGAGCTGG  
TGAAGCCGAAGTGTGAGAATTGGAGACCCGCTGGAAAAGCTCCTGAAACTGGGCACTGGTCTCCTGGA  
AAGTGGGCGCCATTACCTTGCTGCCAGCCGCGCCTTCGTTGTGCGCATTGTGACCTGGCCCGCCTGGGT  
CCACCAGAGCCCATGATGGCGGAGTGTCTGAAAAAATCACCGTGAACCAAGCTGGACAGCC  
ATGCGGAGCTTCTAGATGCCACCAACACACACTGCAGCAGCAGATCCAGACCCTGGTCAAGGAAGTCT  
GCGGGTTCGAGAGGCTCGCCGGATTTCTGGCGGGGGCTGAGAGCCTGGAGCTGCCCTGACCCAC  
AACGCAGAGGTTCCAGGCGCCGGGCCAGGAGGCAGAAGAGGCAGGAGCTGCTTTGAGGACGGCTCGAG  
CTGGGTACCGGGACGGGCACTGGATTATGCCCTGCAGATCAACGTGATTGAGGACAAGAGGAAGTTTGA  
CATCATGGAGTTTGTGCTGCGTTTGGTGGAGGCCAGGCTACCCATTTCCAGCAGGGCCATGAGGAGCTG  
AGCCGGCTGTCCAGTATCGAAAGGAGCTGGGCGCCAGTTGCACCAGCTGGTCTTGAATTCAGCAGCAG  
AGAAGAGGGACATGGAGCAGAGACAGTGTCTGAAACAGAAGGAGCTGGTGGGGAGGAGCCAGAACC  
AAGCTTAAGAGAGGGCCTGGTGGCCTGGTGTGGAAGGACATCTCTTCAAACGGGCCAGCAACGCATTT  
AAGACCTGGAGCAGACGCTGGTTCACCATTCAGAGCAACCAACTGGTTTACCAGAAGAAGTACAAGGACC  
CTGTGACTGTGGTGGTGGATGACCTTCGCTCTGCACAGTGAACCTGACCCTGACTCAGAAAGGCGGTT  
CTGCTTTGAGGTGGTGTCCACCAGCAAGTCTGCCTCCTCCAGGCTGACTCAGAGCGCCTCCTGCAGCTG  
TGGTCACTGTGTGCAGAGCAGCATTGCTTCTGCCTTCACTCAGGCTCGCCTTGTGACAGCCCCGGG  
GTCCAGGCCAGGGCTCAGGACACCTGGCCATAGGCTCTGCTGCCACCCTGGGCTCTGGTGAATGGCCAG  
GGGAAGGGAGCCTGGGGGAGTCGGGCACGTGGTGGCCAGGTCCAGAGTGTGGATGGCAATGCCAGTGC  
TGCAGTCCCGGGAGCCAGCCCCGAGTGGGCCAGCATCAACCTTGGTGTACCCTCTGCATTCACTGTT  
CCGGCATCCACAGGAGCCTTGGTGTCACTTCTCAAAGTCCGGTCTCTGACCCTTGACTCATGGGAGCC  
AGAAGTGTGAAGCTCATGTGTGAGCTGGGAAATGTATCATCAACCAGATCTATGAGGCCCGCGTGGAG  
GCCATGGCAGTGAAGAAACCAGGGCCAGCTGCTCCCGCAGGAGAAGGAGGCCTGGATTCACGCTAAAT  
ACGTGGAGAAGAAGTTCCTGACCAAGCTGCCTGAGATTCGAGGGCGAAGAGGTGGCCGGGGCGCCCAAG  
GGGGCAGCCTCCTGTGCCCCAAAGCCTCCATCAGGCCCGGCCAGGGAGCTTGAGATCAAGCCAGAG  
CCCCCTCTGAGGACCTGGGAAGCTGCACCCTGGGGCCTACTGTTTCGAGCGTCTGGGCATCCTCCAT  
CTCTCCACCATGGCTGATGCCCTTGCCATGGAGCTGATGTCAACTGGGTCAATGGGGCCAAGATAA  
TGCCACACCGCTGATCCAGGCCACAGCTGCTAATTCTTCTTCTGGCCTGTGAGTTTCTCCTCCAGAACGGG  
GCGAACGTGAACCAAGCGGACAGTGCAGGCCGGGGCCCGCTGCACCACGCAACCATTTCTGGCCACACGG  
GGCTCGCCTGCCTGTTCTGAAACGGGGAGCTGATCTGGGGGCTCGAGACTCTGAAGGCAGGGACCTCT  
GACCATCGCCATGGAAACAGCCAACGCTGACATCGTACCCTGCTACGACTGGCAAAGATGAGGGAGGCT  
GAAGCGGCCAGGGCAGGAGGATGAGACGTATCTTGACATCTCCGCGACTTCTCCCTCATGGCGT  
CAGACGACCCGGAGAAGCTGAGCCGTGCGAGTCATGACCTCCACACGCTG

**ACGCGT**ACGCGGCCGCTCGAGCAGAACTCATCTCAGAAGAGGATCTGGCAGCAAATGATATCCTGGATT  
ACAAGGATGACGACGATAAGGTTTAA

**Protein Sequence:** >RC203724 protein sequence  
Red=Cloning site Green=Tags(s)

```

MTVKLDFEECLKDSPRFRA SIELVEAEVSELETRLEKLLKLTGTLLESGRHYLAASRA FVVGICDLARLG
PPEPMAECLKFTVSLNHKLD SHAELLDATQHTLQQQIQTLVKEGLRGFREARRDFWRG AESLEALTH
NAEVP RRRRAQEAE EAGAALRTARAGYRGRALDYALQINVI EDKRFDIMEFVLR LVEAQATHFQQGHEEL
SRLSQYRKELGAQLHQLV LNSAREKRDMEQRHVLLKQKELGGE EPEPSLREGPGGLVM EGHLFKRASNAF
KTWSRRWFTIQSNQLVY QKKYKDPVTVVVDDLRLCTVKLCPDSERRFC FEVVSTSKSCLLQADSERLLQL
WYSAVQSSIASAFSQARL DDDSPRPGQGSGHLAIGSAATL GSGGMARGREP GGVGHVVAQVQSV DGNACQ
CDCREPAPEWASINLGV TL CIQCSGIHRSLGVHFSKVRSL TLDSEPELVKLMCELGNVI INQIYE ARVE
AMAVKPKPGPSCSRQEKEAW IHAKYVEKKFLTKLPEIRGRRGGRPRGQP PVPKPSIRPRP GSLRSKPE
PPSEDLGSLHPGALLFR ASGHPPSLPTMADALAHGADVNWNVGGQDNATPL IQATAANSL LACEFLLQNG
ANVNQADSAGRPLHHA TILGHTGLACLFKRGADLGARDSEGRDPLTI AMETANADIVTLLRLAKMREA
EAAQGGAGDETYLDIFR DFSLMASDDPEKLSRRSHDLHTL
    
```

TRTRPLEQKLI SEEDLAANDILDYKDDDDKV

**Chromatograms:** [https://cdn.origene.com/chromatograms/mk6310\\_g06.zip](https://cdn.origene.com/chromatograms/mk6310_g06.zip)

**Restriction Sites:** SgfI-MluI

**Cloning Scheme:**

Cloning sites used for ORF Shuttling:



\* The last codon before the Stop codon of the ORF

**ACCN:** NM\_014716

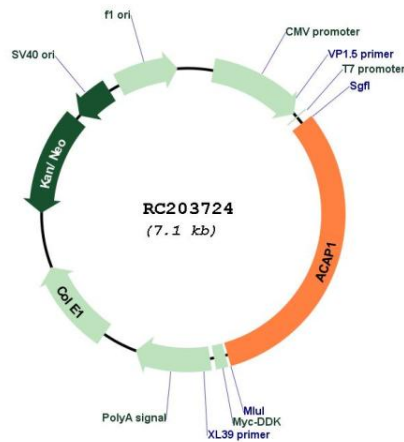
**ORF Size:** 2220 bp

**OTI Disclaimer:** The molecular sequence of this clone aligns with the gene accession number as a point of reference only. However, individual transcript sequences of the same gene can differ through naturally occurring variations (e.g. polymorphisms), each with its own valid existence. This clone is substantially in agreement with the reference, but a complete review of all prevailing variants is recommended prior to use. [More info](#)

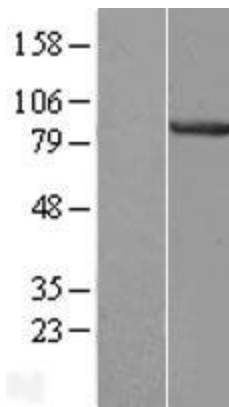
**OTI Annotation:** This clone was engineered to express the complete ORF with an expression tag. Expression varies depending on the nature of the gene.

<b>Components:</b>	The ORF clone is ion-exchange column purified and shipped in a 2D barcoded Matrix tube containing 10ug of transfection-ready, dried plasmid DNA (reconstitute with 100 ul of water).
<b>Reconstitution Method:</b>	<ol style="list-style-type: none"><li>1. Centrifuge at 5,000xg for 5min.</li><li>2. Carefully open the tube and add 100ul of sterile water to dissolve the DNA.</li><li>3. Close the tube and incubate for 10 minutes at room temperature.</li><li>4. Briefly vortex the tube and then do a quick spin (less than 5000xg) to concentrate the liquid at the bottom.</li><li>5. Store the suspended plasmid at -20°C. The DNA is stable for at least one year from date of shipping when stored at -20°C.</li></ol>
<b>Note:</b>	Plasmids are not sterile. For experiments where strict sterility is required, filtration with 0.22um filter is required.
<b>RefSeq:</b>	<a href="#">NM_014716.4</a>
<b>RefSeq Size:</b>	2523 bp
<b>RefSeq ORF:</b>	2223 bp
<b>Locus ID:</b>	9744
<b>UniProt ID:</b>	<a href="#">Q15027</a>
<b>Cytogenetics:</b>	17p13.1
<b>Domains:</b>	ArfGap, PH, ANK
<b>Protein Pathways:</b>	Endocytosis
<b>MW:</b>	81.5 kDa
<b>Gene Summary:</b>	GTPase-activating protein (GAP) for ADP ribosylation factor 6 (ARF6) required for clathrin-dependent export of proteins from recycling endosomes to trans-Golgi network and cell surface. Required for regulated export of ITGB1 from recycling endosomes to the cell surface and ITGB1-dependent cell migration.[UniProtKB/Swiss-Prot Function]

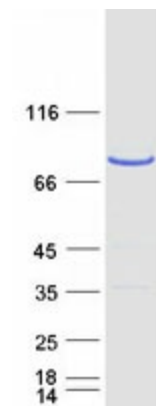
Product images:



Circular map for RC203724



Western blot validation of overexpression lysate (Cat# [LY415090]) using anti-DDK antibody (Cat# [TA50011-100]). Left: Cell lysates from untransfected HEK293T cells; Right: Cell lysates from HEK293T cells transfected with RC203724 using transfection reagent MegaTran 2.0 (Cat# [TT210002]).



Coomassie blue staining of purified ACAP1 protein (Cat# [TP303724]). The protein was produced from HEK293T cells transfected with ACAP1 cDNA clone (Cat# RC203724) using MegaTran 2.0 (Cat# [TT210002]).