

Product datasheet for **RC203723**

KIAA0408 (NM_014702) Human Tagged ORF Clone

Product data:

Product Type:	Expression Plasmids
Product Name:	KIAA0408 (NM_014702) Human Tagged ORF Clone
Tag:	Myc-DDK
Symbol:	KIAA0408
Mammalian Cell Selection:	Neomycin
Vector:	pCMV6-Entry (PS100001)
E. coli Selection:	Kanamycin (25 ug/mL)



[View online »](#)

ORF Nucleotide
Sequence:

>RC203723 ORF sequence
Red=Cloning site Blue=ORF Green=Tags(s)

TTTTGTAATACGACTCACTATAGGGCGGCCGGAATTCGTGACTGGATCCGGTACCGAGGAGATCTGCC
GCCCGCATCGCC

ATGGACCTACATAAGCAGTGGGAGAACACAGAGACTAACTGGCATAAGGAAAAGATGGAATTACTGGACC
AGTTTGACAATGAAAGAAAGGAATGGGAAAGTCAATGGAAGATTATGCAGAAGAAAATAGAAGAGCTTTG
CCGGGAAGTAAAGCTTTGGAGGAAAATCAATATCAATGAACGTGCTAAGATCATTGATCTTTACCATGAG
AAGACCATTCCAGAGAAAGTGATAGAATCTTCCCAAATACCCCGATTTAGGACAAAAGTGAATTTATAA
GGACGAATCACAAAGATGGTCTGAGAAAAGAAAATAAAAGAGAGCAGAGCTTAGTCAGTGGAGGAAATCA
AATGTGTAAAGAACAAAAAGCAACAAAAAATCAAAGTAGGGTTTTGGATCCTTTGGTACAGACAAC
CAAAAGGAATGTGAGGCCTGGCCTGACCTGAGGACTTCTGAGGAAGACAGCAAGAGCTGTCTGGCGCCC
TCAGTACAGCTCTGAAGAACTTGCAGAGGTGAGTGAAGAATTATGCAGCTTTCAAGAGGAAATTCGAAA
GCGGTCTAACCATAGAAGGATGAAGTCAGATTCTTTCTCCAGGAAATGCCAAATGTAACATAATACCT
CATGGGGACCCCATGATCAACAATGACCAGTGCATTCTTCCAATCAGTTTAGAAAAAGAAAACAGAAAA
ATAGGAAGAATCTGAGCTGTACCAATGTGCTCCAGAGCAATTCTACGAAAAAATGTGGAATTGATACAAT
CGATTTAAAAAGAAATGAACTCCACCAGTTCTCTCCTCCAAGAAGCACCTCTCGAAATTTTCCAGCTCG
GATTCTGAAACAAGCCTATGAAAGATGGAAGGAAAGGTTAGACCACAACAGCTGGGTGCCCATGAGGGTC
GAAGTAAAAGGAATTACAACCTCACTTCCCTTTGAGACAACAAGAGATGTCTATGTTGTATCCAAATGA
AGGGAAAACCTTCGAAAGATGGTATCATCTTTCTCTTTGGTACCAGAAGTCAAATAGATAGCAAGCCT
CCAAGTAATGAAGATGTTGGACTTAGCATGTGGTATGTGACATTGGGATAGGTGCAAAAAGGAGCCCT
CTACTTCGTGGTTTCAGAAAACCTGCTCTACCCCAAGTAATCCAAAATAGAAATGGTATCCAGATCA
CCCTGCTAAATCTCATCCTGATCTTCATGTAAGTAATGACTGTAGCTCCTCAGTAGCAGAGAGCAGTAGC
CCACTTAGAAATTTAGTTGTGGCTTTGAAAGGACTACAAGGAATGAGAAGCTGGCAGCAAAAGACTGATG
AATTTAACAGAACTGATTTAGAACAGATAGAAATGTCAGGCAATACAGCAAAATCACAGCTGCTCAAA
ATCATCGGAGGATCTCAAGCCCTGTGATACCTCATCTACTCACACAGGTAGCATATCACAAAGTAACGAT
GTGTCCGGTATTTGAAAACCAATGCCACATGCCTGTGCCATGGAAAATGTGCCTGATAATCCCACCA
AGAAATCCACAACAGGCCTAGTAAGACAAATGCAGGGACACCTAAGTCTCGCAGTTATCGAAATATGCT
CCACGAGCATGACTGGAGACCGAGTAATTTGTCTGGCCGTCGAGGTGAGCTGATCCAGGTCAAATTA
GGTGTGTGGAAAAGCTGCTGAAAACCTATGAGACAGCAACAGAGTCTGCATTGCAAAATCTAAGTGCT
TCCAGGATAATTGACCAGAAATGTAATTCGATGTCAAGTGGTGGTCCACATTAAGTCAGCATTTAGAAAT
GCTCCAAATGGAACAACAGTTTCAGCAAAAGACAGCTGTGTGGGGGGACAGGAAGTGAAGCAAGGAATA
GATCCGAAAAGATAACAGAGGAATCCATGTCAGTGAACGCCCTCACATGGAAAAGGATTTTCCCGACCTG
CTAGACCAGCAAAATCGTCGTCTCCCTCCAGATGGGCATCCAGATCTCCATCTGCACCCCTGCCTTGGC
GAGAACTACCCACAACATAACCATTTCTCTGCGATCCGAAGCATTGATGGTT

ACGCGTACGCGGCCGCTCGAGCAGAACTCATCTCAGAAGAGGATCTGGCAGCAATGATATCCTGGATT
ACAAGGATGACGACGATAAGGTTTAA

Protein Sequence: >RC203723 protein sequence
 Red=Cloning site Green=Tags(s)

MDLHKQWENTETNWHKEKMELLDQFDNERKEWESQWKIMQKKIEELCREVKLWRKININERAKIIDLYHE
 KTIPEKVIESPYPDLGQSEFIRTNHKDGLRKENKREQSLVSGGNQMCKEQKATKKSKVGFLDPLATDN
 QKECEAWPDLRTSEEDSKSCSGALSTALEELAKVSEELCSFQEEIRKRSNHRRMKSDFSFLQEMPVNTNIP
 HGDPMINNDQCILPI SLEKEKQKNRKNLSCTNVLQSNSTKKCGIDTIDLKRNTPPVPPRSTSRNFPSS
 DSEQAYERWKERLDHNSWPHEGRSKRNYNPHFPLRQQEMSMLYPNEGKTSKDGIIIFSSLVPEVKIDSKP
 PSNEDVGLSMWSCDIGIGAKRSPSTSWFQKTCSTPSNPKYEMVIPDHPAKSHPDLHVSNDCSSVAESS
 PLRNFSCGFERTTRNEKLAAKTDEFNRTVFRTDRNCQAIQQNHSCSKSSEDLKPCDTSSTHTGSISQNSD
 VSGIWKNAHMPVPMENVPDNPSTTKSTTGLVRQMQGHLSPRSYRNLHEHDWRPSNLSGRPRSADPRSNY
 GVVEKLLKTYETATESALQNSKCFQDNWTKCNSDVSGGATLSQHLEMLQMEQQFQKQKTAVWGGQEVKQGI
 DPKKITEESMSVNASHGKGF SRP ARP ANRRLPSRWASRSPSAPPALRRTTHNYTISLRSEALMV

TRTRPLEQKLISEEDLAANDILDYKDDDDKV

Chromatograms: https://cdn.origene.com/chromatograms/mk6523_e10.zip

Restriction Sites: SgfI-MluI

Cloning Scheme:



ACCN: NM_014702

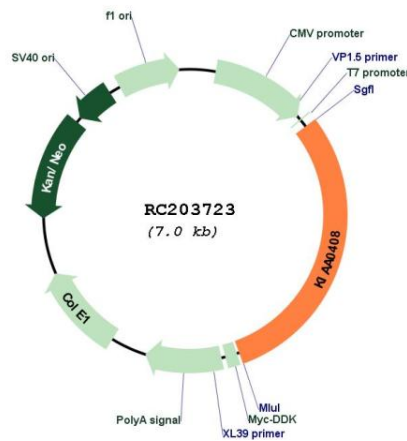
ORF Size: 2082 bp

OTI Disclaimer: The molecular sequence of this clone aligns with the gene accession number as a point of reference only. However, individual transcript sequences of the same gene can differ through naturally occurring variations (e.g. polymorphisms), each with its own valid existence. This clone is substantially in agreement with the reference, but a complete review of all prevailing variants is recommended prior to use. [More info](#)

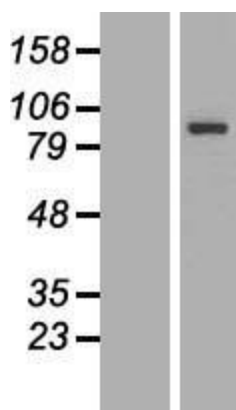
OTI Annotation: This clone was engineered to express the complete ORF with an expression tag. Expression varies depending on the nature of the gene.

- Components:** The ORF clone is ion-exchange column purified and shipped in a 2D barcoded Matrix tube containing 10ug of transfection-ready, dried plasmid DNA (reconstitute with 100 ul of water).
- Reconstitution Method:**
1. Centrifuge at 5,000xg for 5min.
 2. Carefully open the tube and add 100ul of sterile water to dissolve the DNA.
 3. Close the tube and incubate for 10 minutes at room temperature.
 4. Briefly vortex the tube and then do a quick spin (less than 5000xg) to concentrate the liquid at the bottom.
 5. Store the suspended plasmid at -20°C. The DNA is stable for at least one year from date of shipping when stored at -20°C.
- Note:** Plasmids are not sterile. For experiments where strict sterility is required, filtration with 0.22um filter is required.
- RefSeq:** [NM_014702.5](#)
- RefSeq Size:** 8124 bp
- RefSeq ORF:** 2085 bp
- Locus ID:** 9729
- UniProt ID:** [Q6ZU52](#)
- Cytogenetics:** 6q22.33
- MW:** 79.2 kDa

Product images:



Circular map for RC203723



Western blot validation of overexpression lysate (Cat# [LY415080]) using anti-DDK antibody (Cat# [TA50011-100]). Left: Cell lysates from untransfected HEK293T cells; Right: Cell lysates from HEK293T cells transfected with RC203723 using transfection reagent MegaTran 2.0 (Cat# [TT210002]).