

Product datasheet for RC203722

OTUD6B (NM_016023) Human Tagged ORF Clone

Product data:

Product Type:	Expression Plasmids
Product Name:	OTUD6B (NM_016023) Human Tagged ORF Clone
Tag:	Myc-DDK
Symbol:	OTUD6B
Synonyms:	CGI-77; DUBA-5; DUBA5; IDDFSDA
Mammalian Cell Selection:	Neomycin
Vector:	pCMV6-Entry (PS100001)
E. coli Selection:	Kanamycin (25 ug/mL)
ORF Nucleotide Sequence:	>RC203722 ORF sequence Red=Cloning site Blue=ORF Green=Tags(s)

TTTTGTAATACGACTCACTATAGGGCGGCCGGAATTCGTCGACTGGATCCGGTACCGAGGAGATCTGCC
GCC**CGATCGCC**

ATGGAGGCGGTATTGACCGAAGAGCTTGATGAGGAAGAGCAGCTGCTGAGAAGGCATCGCAAAGAGAAGA
AGGAGTTGCAAGCCAAAATTCAGGGCATGAAGAATGCTGTTCCCAAGAATGACAAGAAGAGGAGGAAGCA
GCTCACCGAAGATGTGGCCAAGTTGAAAAAGAAATGGAACAGAAACATAGAGAGGAACTGGAGCAATTG
AAGCTGACTACTAAGGAGAATAAGATAGATTCTGTTGCTTAACTTTCAAACCTGGTGCTTGAGAATC
AGCCACCTCGGATATCAAAGCACAAAAGAGACGGGAAAAGAAAGCTGCATTGGAAAAGGAGCGAGAAGA
ACGGATAGCTGAAAGTGAATTTAAAACCTTAACAGGAGCCAGACATATGGAAAGTGAGAACTTGCTCAA
ATATTGGCAGCTAGACAGTTAGAAATTAACAGATTCCATCTGATGGCCACTGTATGTATAAAGCCATTG
AAGATCAACTGAAAGAAAAGGATTGTGCTCTGACTGTGTTGCCTTGAGAAGTCAGACCGCTGAGTATAT
GCAAAGCCATGTGGAAGACTTTCTGCCATTTTTAACAAACCCTAATACAGGAGATATGTATACTCCAGAA
GAATTTCAGAAGTACTGTGAAGATATTGTAACACAGCTGCATGGGGAGGTCAGCTTGAGCTAAGAGCTC
TGTCTCACATTTTACAAACCAATAGAGATAATACAGGCAGATTCTCCTCCCATTATAGTTGGTGAAGA
ATATTTCAAAAAACCCTAATACTTGTATATATGAGACATGCATATGGCTTAGGAGAACATTATAATTCC
GTTACACGGTTGGTAAACATAGTTACTGAAAATTGCAGC

ACGCGTACGCGGCCGCTCGAGCAGAAACTCATCTCAGAAGAGGATCTGGCAGCAAATGATATCCTGGATT
ACAAGGATGACGACGATAAGGTTTAA



[View online »](#)

Protein Sequence: >RC203722 protein sequence
Red=Cloning site Green=Tags(s)

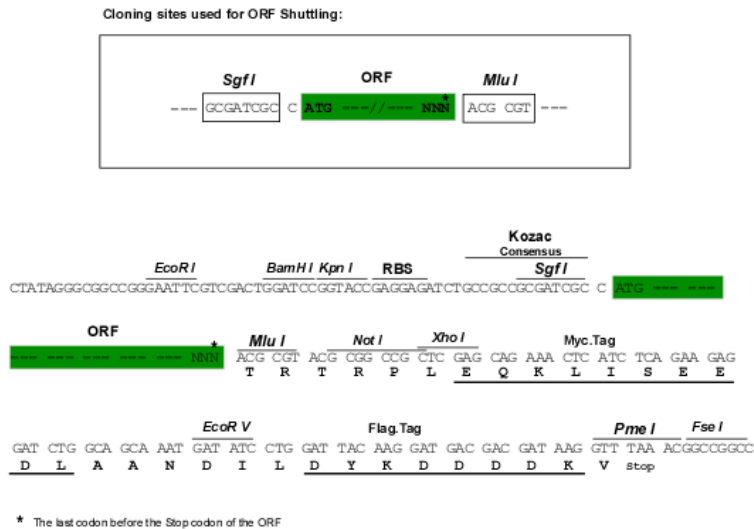
MEAVLTEELDEEEQLRRHRKEKELQAKIQGMKNAVPKNDKRRKQLTEDVAKLEKEMEQQHREELEQL
 KLTTKENKIDSVAVNISNLVLENQPPRISKAQKRREKKAALEREERIEAEIENLTGARHMESEKLAQ
 ILAARQLEIKQIPSDGHCMYKAIEDQLKEKDCALTVVALRSQTAEYMQSHVEDFLPFLTNPNTGDMYTP
 EFQKYCEDIVNTAAWGGQLELRALSHILQTPIEIIQADSPPIIVGEEYSKKPLILVYMRHAYGLGEHYS
 VTRLVNIIVTENC

TRTRPLEQKLISEEDLAANDILDYKDDDDKV

Chromatograms: https://cdn.origene.com/chromatograms/mk6013_a04.zip

Restriction Sites: SgfI-MluI

Cloning Scheme:



ACCN: NM_016023

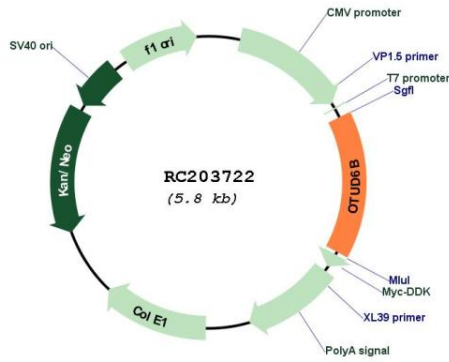
ORF Size: 879 bp

OTI Disclaimer: Due to the inherent nature of this plasmid, standard methods to replicate additional amounts of DNA in E. coli are highly likely to result in mutations and/or rearrangements. Therefore, OriGene does not guarantee the capability to replicate this plasmid DNA. Additional amounts of DNA can be purchased from OriGene with batch-specific, full-sequence verification at a reduced cost. Please contact our customer care team at custsupport@origene.com or by calling 301.340.3188 option 3 for pricing and delivery.

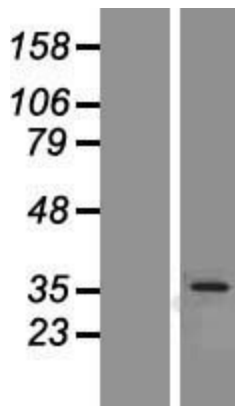
The molecular sequence of this clone aligns with the gene accession number as a point of reference only. However, individual transcript sequences of the same gene can differ through naturally occurring variations (e.g. polymorphisms), each with its own valid existence. This clone is substantially in agreement with the reference, but a complete review of all prevailing variants is recommended prior to use. [More info](#)

OTI Annotation:	This clone was engineered to express the complete ORF with an expression tag. Expression varies depending on the nature of the gene.
Components:	The ORF clone is ion-exchange column purified and shipped in a 2D barcoded Matrix tube containing 10ug of transfection-ready, dried plasmid DNA (reconstitute with 100 ul of water).
Reconstitution Method:	<ol style="list-style-type: none">1. Centrifuge at 5,000xg for 5min.2. Carefully open the tube and add 100ul of sterile water to dissolve the DNA.3. Close the tube and incubate for 10 minutes at room temperature.4. Briefly vortex the tube and then do a quick spin (less than 5000xg) to concentrate the liquid at the bottom.5. Store the suspended plasmid at -20°C. The DNA is stable for at least one year from date of shipping when stored at -20°C.
Note:	Plasmids are not sterile. For experiments where strict sterility is required, filtration with 0.22um filter is required.
RefSeq:	NM_016023.2 , NP_057107.2
RefSeq Size:	3306 bp
RefSeq ORF:	882 bp
Locus ID:	51633
UniProt ID:	Q8N6M0
Cytogenetics:	8q21.3
Domains:	OTU
Protein Families:	Protease
MW:	33.8 kDa
Gene Summary:	This gene encodes a member of the ovarian tumor domain (OTU)-containing subfamily of deubiquitinating enzymes. Deubiquitinating enzymes are primarily involved in removing ubiquitin from proteins targeted for degradation. This protein may function as a negative regulator of the cell cycle in B cells. [provided by RefSeq, Nov 2013]

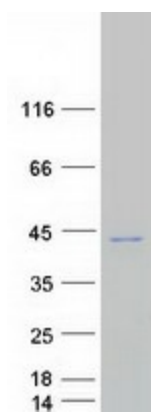
Product images:



Circular map for RC203722



Western blot validation of overexpression lysate (Cat# [LY414242]) using anti-DDK antibody (Cat# [TA50011-100]). Left: Cell lysates from untransfected HEK293T cells; Right: Cell lysates from HEK293T cells transfected with RC203722 using transfection reagent MegaTran 2.0 (Cat# [TT210002]).



Coomassie blue staining of purified OTUD6B protein (Cat# [TP303722]). The protein was produced from HEK293T cells transfected with OTUD6B cDNA clone (Cat# RC203722) using MegaTran 2.0 (Cat# [TT210002]).