

Product datasheet for RC203721

SAMSN1 (NM_022136) Human Tagged ORF Clone

Product data:

Product Type:	Expression Plasmids
Product Name:	SAMSN1 (NM_022136) Human Tagged ORF Clone
Tag:	Myc-DDK
Symbol:	SAMSN1
Synonyms:	HACS1; NASH1; SASH2; SH3D6B; Sly2
Mammalian Cell Selection:	Neomycin
Vector:	pCMV6-Entry (PS100001)
E. coli Selection:	Kanamycin (25 ug/mL)
ORF Nucleotide Sequence:	>RC203721 ORF sequence Red=Cloning site Blue=ORF Green=Tags(s)

TTTTGTAATACGACTCACTATAGGGCGGCCGGAATTCGTCGACTGGATCCGGTACCGAGGAGATCTGCC
GCC**CGGATCGCC**

ATGCTCAAGAGAAAGCCATCCAATGTTTCAGAGAAGGAGAAACATCAAAAACAAAGCGAAGCAGCAGTT
TTGGGAATTTTCGATCGTTTTCGGAATAATCTTTATCAAACAGATGATTCAACTGAGGCACATGAAGG
AGATCCCACAAAATGGAAGTGGAGAACAAAGTAAACTTCAAATAATGGAGGCGGTTGGGTAAAAAATG
AGAGCTATTTTCATGGACAATGAAGAAAAAGTGGGTAAAAAGTACATCAAAGCCCTTCTGAGGAAAAGG
ATGAGGAAGATGGAGAGAATGCCACCCATATAGAAACAGTGACCCTGTGATTGGGACCCACACAGAGAA
GGTGTCCCTCAAAGCCAGTGACTCCATGGATAGTCTCTACAGTGGACAGAGCTCATCAAGTGGCATAACA
AGCTGTTTCAGATGGTACAAGTAACCGGGACAGCTTTCGACTGGATGACGATGGCCCTATTCAGGACCAT
TCTGTGGCCGTGCCAGAGTGCATACGGATTTACGCAAGTCCCTATGACTGACTCCCTCAAAATCAA
GAAAGGAGACATCATAGACATTTTGCAAAACACCAATGGGGATGTGGACAGGAATGTTGAACAATAAA
GTGGGAAACTTCAAATTCATTTATGTGGATGTCATCTCAGAAGAGGAAGCAGCCCCAAGAAAATAAAGG
CAAACCGAAGGAGTAACAGCAAAAAATCCAAGACTCTGCAGGAGTTCTAGAGAGGATTCATCTGCAGGA
ATACACCTCAACACTTTTGCTCAATGGTTATGAGACTCTAGAAGATTTAAAAGATATAAAAGAGAGTCC
CTCATTGAATTAATATTGAAAACCCAGATGACAGAAGAAGTTACTATCAGCTGCTGAAAACCTTCCTTG
AAGAAGAAATTTCAAGAGCAAGAAAATGAACCTGAGCCCTATCCTTGAGCTCAGACATCTCCTTAAA
TAAGTCACAGTTAGATGACTGCCAAGGGACTCTGGTTGTATATCTCATTAGGAAATTCAGATAATGGC
AAAGAGGATCTGGAGTCTGAAAATCTGTCTGACATGGTACATAAGATTATTATCAGAGCCAAGTGAC

ACGCGTACGCGGCCGCTCGAGCAGAAACTCATCTCAGAAGAGGATCTGGCAGCAAATGATATCCTGGATT
ACAAGGATGACGACGATAAGGTTAA



[View online »](#)

Protein Sequence: >RC203721 protein sequence
Red=Cloning site Green=Tags(s)

MLKRKPSNVSEKEKHQPKRSSSFGNFDRFRNNSLSKPDDSTEAHEGDPTNGSGEQSKTSNNGGGLGKKM
 RAISWTMKKKVGKKYIKALSEEKDEEDGENAHPYRNSDPVIGTHTEKVSLSKASDSMSLYSGQSSSSGIT
 SCSDGTSNRDSFRLDDDGPYSGPFCGRARVHTDFTPSPYDSDLKIKKGDIIIDICKTPMGMTGMLNNK
 VGNFKFIYVDVISEEEAAPKKIKANRRSNSKSKTLQEFLERIHLEQYETSTLLNGYETLEDLKDIIKESH
 LIELNIENPDRRRLLSAENFLEEIIQEQENEPEPLSLSSDISLNKSQLDDCPRDSGCYISSGNSDNG
 KEDLESENLSDMVHKIITEPSD

TRTRPLEQKLISEEDLAANDILDYKDDDDKV

Chromatograms: https://cdn.origene.com/chromatograms/mk6013_g11.zip

Restriction Sites: SgfI-MluI

Cloning Scheme:



* The last codon before the Stop codon of the ORF

ACCN: NM_022136

ORF Size: 1119 bp

OTI Disclaimer: The molecular sequence of this clone aligns with the gene accession number as a point of reference only. However, individual transcript sequences of the same gene can differ through naturally occurring variations (e.g. polymorphisms), each with its own valid existence. This clone is substantially in agreement with the reference, but a complete review of all prevailing variants is recommended prior to use. [More info](#)

OTI Annotation: This clone was engineered to express the complete ORF with an expression tag. Expression varies depending on the nature of the gene.

Components: The ORF clone is ion-exchange column purified and shipped in a 2D barcoded Matrix tube containing 10ug of transfection-ready, dried plasmid DNA (reconstitute with 100 ul of water).

Reconstitution Method:

1. Centrifuge at 5,000xg for 5min.
2. Carefully open the tube and add 100ul of sterile water to dissolve the DNA.
3. Close the tube and incubate for 10 minutes at room temperature.
4. Briefly vortex the tube and then do a quick spin (less than 5000xg) to concentrate the liquid at the bottom.
5. Store the suspended plasmid at -20°C. The DNA is stable for at least one year from date of shipping when stored at -20°C.

RefSeq: [NM_022136.5](#)

RefSeq Size: 1922 bp

RefSeq ORF: 1122 bp

Locus ID: 64092

UniProt ID: [Q9NSI8](#)

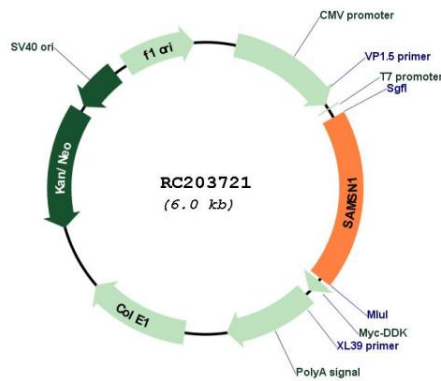
Cytogenetics: 21q11.2

Domains: SH3, SAM

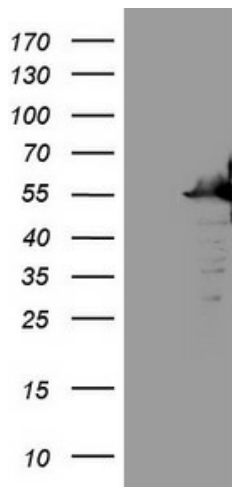
MW: 41.7 kDa

Gene Summary: SAMSN1 is a member of a novel gene family of putative adaptors and scaffold proteins containing SH3 and SAM (sterile alpha motif) domains (Claudio et al., 2001 [PubMed 11536050]).[supplied by OMIM, Mar 2008]

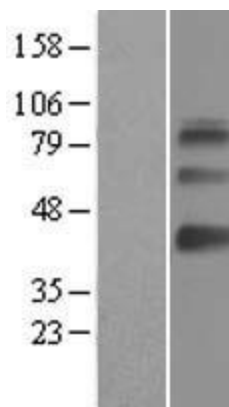
Product images:



Circular map for RC203721



HEK293T cells were transfected with the pCMV6-ENTRY control (Cat# [PS100001], Left lane) or pCMV6-ENTRY SAMSN1 (Cat# RC203721, Right lane) cDNA for 48 hrs and lysed. Equivalent amounts of cell lysates (5 ug per lane) were separated by SDS-PAGE and immunoblotted with anti-SAMSN1 (Cat# [TA808900])(1:2000). Positive lysates [LY402912] (100ug) and [LC402912] (20ug) can be purchased separately from OriGene.



Western blot validation of overexpression lysate (Cat# [LY402912]) using anti-DDK antibody (Cat# [TA50011-100]). Left: Cell lysates from untransfected HEK293T cells; Right: Cell lysates from HEK293T cells transfected with RC203721 using transfection reagent MegaTran 2.0 (Cat# [TT210002]).