

Product datasheet for RC203719

ERI2 (NM_080663) Human Tagged ORF Clone

Product data:

Product Type:	Expression Plasmids
Product Name:	ERI2 (NM_080663) Human Tagged ORF Clone
Tag:	Myc-DDK
Symbol:	ERI2
Synonyms:	EXOD1; ZGRF5
Mammalian Cell Selection:	Neomycin
Vector:	pCMV6-Entry (PS100001)
E. coli Selection:	Kanamycin (25 ug/mL)
ORF Nucleotide Sequence:	>RC203719 ORF sequence Red=Cloning site Blue=ORF Green=Tags(s)

TTTTGTAATACGACTCACTATAGGGCGGCCGGAATTCGTCGACTGGATCCGGTACCGAGGAGATCTGCC
GCC**CGATCGCC**

ATGGCGACCAAGCGGCTCGCGCGGCAGCTTGGATTAATTAGGAGAAAGTCAATTGCGCCAGCAAATGGAA
ATCTCGGAAGAAGCAAATCCAAGCAGTTGTTTGACTACTTAATTGTCATTGATTTTGAATCGACATGCTG
GAATGATGGGAAGCACCACCATAGCCAGGAAATAATTGAGTTCCAGCAGTGTGCTGAACACATCAACT
GGACAGATTGACTCTGAGTTCAGGCTTATGTTCAACCTCAGGAACATCCAATTCCTTTCAGAATTTTGA
TGGAATTGACAGGCATAAAGCAGGCTCAAGTTGATGAAGGAGTCCCTCTGAAGATTTGCTTATCTCAGTT
CTGTAAATGGATTATAAGATTCAGCAACAGAAGAACATTATTTTTGCTACTGGGATTCAGAGCCTTCT
GCTTCTGAAGTAAAATTATGTGCATTTGTACTTGGTCAGACTGGGACTTGGGGTTTGCCTGGAGTATG
AGTGTAAGAAAACAGCTGTTAAAACCTGTGTTTTAAATTCCTGGATTGATCTCAGAGCAACTTACAA
GCTTTTCTATAGGAGAAAACAAAAGGACTAAGTGGTGCCTTGCAGGAAGTAGGAATAGAATTCAGGA
CGAGAACATTCGGGTTGGACGATTCTCGGAATACTGCCCTTCTGCTTGGAAAATGATCAGAGATGGTT
GTGTAATGAAAATTACAAGGTCGTTGAACAAGGGTCCCTTCTCTGCTTGGAACTACAGAACCTTACTT
TCTGGCCTCAGGGGACCAGCATGCTTTTCTTAAGCAAGAATTTGGCTGTGGAACCTACAGAACCTTACTT
CAGAAGCCCAATATGAGTAAACAGGAAAAGGGGAATATTTCTGGTTGACAATGGTGTGGCTGTCACTGG
CATGTCTGCAAAGGAAAACACAATGACTGCATGTTAAACACAGCATCACAGACTGTTACCACTGAAAA
ATTT

ACGCGTACGCGGCCGCTCGAGCAGAACTCATCTCAGAAGAGGATCTGGCAGCAAATGATATCCTGGATT
ACAAGGATGACGACGATAAGGTTTAA



[View online »](#)

Protein Sequence: >RC203719 protein sequence
Red=Cloning site Green=Tags(s)

MATKRLARQLGLIRRKSIAPANGNLGRSKSKQLFDYLIVIDFESTCWNDGKHHHSQEIEFPAVLLNTST
 GQIDSEFQAYVQPQEHPIILSEFCMELTGIKQAQVDEGVPLKICLSQFCKWIHKIQQKNIIFATGISEPS
 ASEVKLCAFVTWSDWDLGVCLEYECKRKQLLKPVFLNSWIDLRTYKLFYRRKPKGLSGALQEVGIEFSG
 REHSGLDDSRNTALLAWKMIRDGCVMKITRSLNKGPFLLPSTWNSDLASGDQHAFLKQEFGCCTYRLL
 QKPNMSKQEKGNILWLTMYWLSLACLQRKNYNDCLNTASQTVTEKF

TRTRPLEQKLISEEDLAANDILDYKDDDDKV

Chromatograms: https://cdn.origene.com/chromatograms/mk6131_d09.zip

Restriction Sites: SgfI-MluI

Cloning Scheme:



ACCN: NM_080663

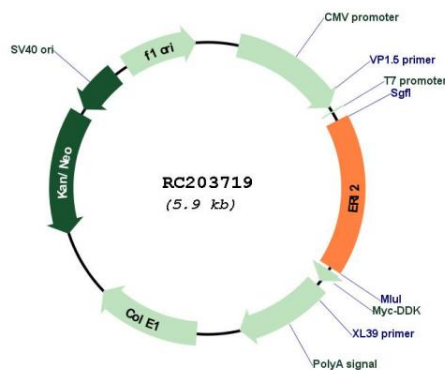
ORF Size: 984 bp

OTI Disclaimer: Due to the inherent nature of this plasmid, standard methods to replicate additional amounts of DNA in *E. coli* are highly likely to result in mutations and/or rearrangements. Therefore, OriGene does not guarantee the capability to replicate this plasmid DNA. Additional amounts of DNA can be purchased from OriGene with batch-specific, full-sequence verification at a reduced cost. Please contact our customer care team at custsupport@origene.com or by calling 301.340.3188 option 3 for pricing and delivery.

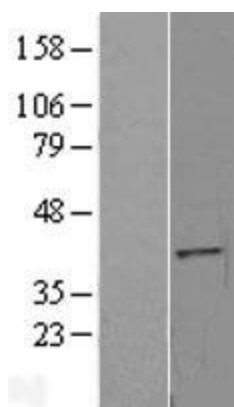
The molecular sequence of this clone aligns with the gene accession number as a point of reference only. However, individual transcript sequences of the same gene can differ through naturally occurring variations (e.g. polymorphisms), each with its own valid existence. This clone is substantially in agreement with the reference, but a complete review of all prevailing variants is recommended prior to use. [More info](#)

OTI Annotation:	This clone was engineered to express the complete ORF with an expression tag. Expression varies depending on the nature of the gene.
Components:	The ORF clone is ion-exchange column purified and shipped in a 2D barcoded Matrix tube containing 10ug of transfection-ready, dried plasmid DNA (reconstitute with 100 ul of water).
Reconstitution Method:	<ol style="list-style-type: none"> 1. Centrifuge at 5,000xg for 5min. 2. Carefully open the tube and add 100ul of sterile water to dissolve the DNA. 3. Close the tube and incubate for 10 minutes at room temperature. 4. Briefly vortex the tube and then do a quick spin (less than 5000xg) to concentrate the liquid at the bottom. 5. Store the suspended plasmid at -20°C. The DNA is stable for at least one year from date of shipping when stored at -20°C.
Note:	Plasmids are not sterile. For experiments where strict sterility is required, filtration with 0.22um filter is required.
RefSeq:	<u>NM_080663.1</u> , <u>NP_542394.1</u>
RefSeq Size:	1503 bp
RefSeq ORF:	987 bp
Locus ID:	112479
UniProt ID:	<u>A8K979</u>
Cytogenetics:	16p12.3
Domains:	EXOIII
MW:	37.5 kDa

Product images:



Circular map for RC203719



Western blot validation of overexpression lysate (Cat# [LY403315]) using anti-DDK antibody (Cat# [TA50011-100]). Left: Cell lysates from untransfected HEK293T cells; Right: Cell lysates from HEK293T cells transfected with RC203719 using transfection reagent MegaTran 2.0 (Cat# [TT210002]).