

Product datasheet for **RC203717**

DTX2 (NM_020892) Human Tagged ORF Clone

Product data:

Product Type:	Expression Plasmids
Product Name:	DTX2 (NM_020892) Human Tagged ORF Clone
Tag:	Myc-DDK
Symbol:	DTX2
Synonyms:	RNF58
Mammalian Cell Selection:	Neomycin
Vector:	pCMV6-Entry (PS100001)
E. coli Selection:	Kanamycin (25 ug/mL)



[View online »](#)

ORF Nucleotide Sequence:

>RC203717 ORF sequence
 Red=Cloning site Blue=ORF Green=Tags(s)

TTTTGTAATACGACTCACTATAGGGCGGCCGGAATTCGTCGACTGGATCCGGTACCGAGGAGATCTGCC
 GCC**CGCATCGCC**

ATGGCCATGGCCCAAGCCCTTCCTGGTGCAGGTGTACACCAGCCCCGGGCTGTGGCCGTGTGGGAAT
 GGCAGGACGGGCTGGGCACCTGGCACCCCTACAGTGCCACCGTCTGCAGCTTCATCGAGCAGCAGTTTGT
 CCAGCAGAAGGGCCAACGTTTTGGGCTTGGGAGCCTGGCCACAGCATCCCTTGGGCCAGGCAGACCCC
 TCGCTGGCCCTTACATTATTGACCTCCCCAGCTGGACCCAGTTCGCCAGGACACCGGCACCATGCGGG
 CTGTGCGGAGACACCTGTTCCCCAGCACTCAGCCCTGGCCGAGGTGTCGTCTGGGAGTGGCTGAGCGA
 CGATGGCTCCTGGACTGCCTATGAAGCCAGCGTCTGTGACTATCTGGAGCAGCAGGTGGCCAGGGGCAAC
 CAGCTCGTGGACTTGGCCCCCTGGGGTACAACACACTGTCACTACACCACCCACACGCAGACCAACA
 AGACTTCCAGCTTTTGGCGAGCGTGGCGGCCAAGCAGGGCCGCTTACCCGGTACCACCATCATCGC
 TCCGCCGGCCACACAGGCGTGCCTGCTTGGCACCAGTGCCTCAGTGGCAGCAGAATGGCCCCGTG
 TCAGGCCGCTACCGCCACTCCATGACCAACCTCCCTGCATACCCCGTCCCCAGCACCCCCACACAGGA
 CCGCTTCTGTGTTTGGGACCCACAGGCCCTTGCACCGTACAACAACCCCTCACTCTCCGGGGCCCGGTC
 TGCGCCAGGCTGAACACCACCAACGCCTGGGGCGCAGCTCCTCCTTCCCTGGGGAGCCAGCCCTCTAC
 CGCTCCAGCCTCTCCACCTGGGACCGCAGCACCTGCCCCAGGATCCTCCACCTCCGGTGCAGTCAGTG
 CCTCCCTCCCCAGCGGTCCCTCAAGCAGCCAGGGAGCGTCCCTGCCACTGTGCCATGCAGATGCCAAA
 GCCCAGCAGAGTCCAGCAGGCGCTCGCAGGCATGACGAGTGTCTGATGTAGCCATTGGACTCCCTGTG
 TGTCTTAGCCGCGCACCCAGCCACAGCCCTCCCGCTCCCGTCTGGCTTCCAAAAGTACGCGCTCAG
 TTAAGAGATTGAGGAAAATGTCCGTGAAAGGAGCGACCCGAAGCCAGAGCCAGAGCCAGAGTGCATCAT
 AAAAAACTACACGGAAGAGCTGAAAGTGCCCCAGATGAGGACTGCATCATCTGCATGGAGAAGCTGCC
 GCAGCGTCTGGATACAGCGATGTGACTGACAGCAAGGCAATCGGGTCCCTAGCTGTGGGCCACCTACCA
 AGTGCAGCCATGCCTTCCACCTGCTGTGCCTCCTGGCCATGACTGCAACGGCAATAAGGATGGAAGTCT
 GCAGTGTCCCTCTGAAAACCATCTATGGAGAGAAGACGGGACCCAGCCAGGGAAAGATGGAGGTA
 TTACGGTTCAGATGTGCTCCCGGCCACGAGGACTGCGGGACCATCCTCATAGTTTACAGCATTCCCC
 ATGGTATCCAGGGCCCTGAGCACCCCAATCCCGGAAAGCCGTTCACTGCCAGAGGGTTTCCCGCCAGTG
 CTACCTCCAGACAACGCCAGGGCCGCAAGTCTAGAGCTCCTGAAGGTGGCCTGGAAGAGGCGGCTC
 ATCTTACAGTGGCAGCTCCAGCACACGGGTGAGACGGACACCGTGGTATGGAACGAGATCCACCACA
 AGACAGAGATGGACCGCAACATTACGGGCCACGGCTATCCCGACCCCAACTACCTGCAGAACGTGCTGGC
 TGAGTGGCTGCCAGGGGGTGACCGAGGACTGCCTGGAGCAGCAG

ACGCGTACGCGGCCGCTCGAGCAGAAACTCATCTCAGAAGAGGATCTGGCAGCAAATGATATCCTGGATT
 ACAAGGATGACGACGATAAGGTTTAA

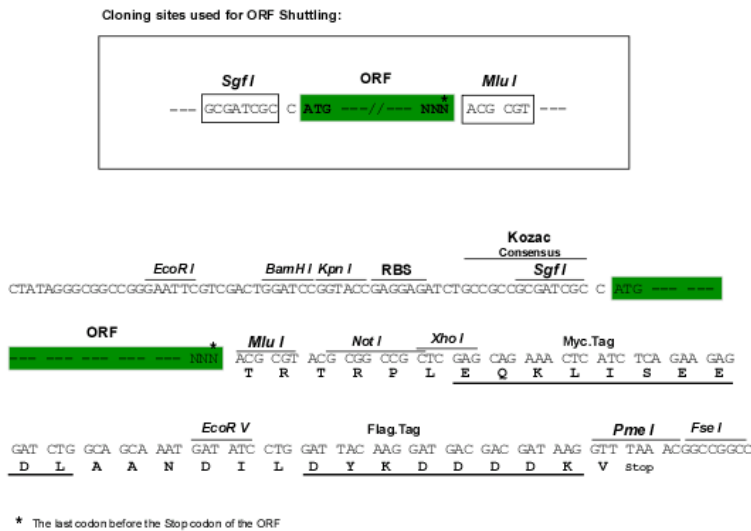
Protein Sequence:

>RC203717 protein sequence
 Red=Cloning site Green=Tags(s)

MAMAPSPSLVQVYTPAAVAVVWEWQDGLTWHYPYSATVCSFIEQQFVQQKQRFGLGSLAHSIPLGQADP
 SLAPYIIDLPSWTQFRQDTGTMRAVRRHLFPQHSAPGRGVVWEWLSDGSWTAYEASVCDYLEQQVARGN
 QLVDLAPLGYNYTVNYTTHTQTNKTSFCSRVRQAGPPYVTTIIAPPGHTGVACSCHQCLSGSRTGPV
 SGRYRHSMTNLPAYVPQHPPHRTASVFGTHQAFAPYNKPSLSGARSAPRLNTTNAWGAAPPPLGSQPLY
 RSSLSHLGPQHLPPGSSTSGAVSASLPSGSPSSSPGVPATVPMQMPKPSRVQQALAGMTSVLMSAIGLPV
 CLSRAPQPTSPPASRLASKSHGSKRLRKMSVKGATPKPEPEPEQVIKNYTEELKVPPEDECIICMEKLS
 AASGYSVDVTSKAIGSLAVGHLTKCSHAFHLLCLLAMYCNGNKGSLQCPCKTIYGEKGTQPQGMKV
 LRFQMSLPGHEDCGTILIVYSIPHGIQGPENPNPKPFTARGFPRQCYLPDQAQGRKVLLELLKVAWKRRLL
 IFTVGTSSSTTGETDVTVVWNEIHHKTEMDRNIITGHGYPDPNYLQNVLAELAAQGVTEDCLEQQ

TRTRPLEQKLISEEDLAANDILDYKDDDDKV

Chromatograms: https://cdn.origene.com/chromatograms/mk6522_e06.zip
 Restriction Sites: SgfI-MluI
 Cloning Scheme:



ACCN: NM_020892

ORF Size: 1866 bp

OTI Disclaimer: The molecular sequence of this clone aligns with the gene accession number as a point of reference only. However, individual transcript sequences of the same gene can differ through naturally occurring variations (e.g. polymorphisms), each with its own valid existence. This clone is substantially in agreement with the reference, but a complete review of all prevailing variants is recommended prior to use. [More info](#)

OTI Annotation: This clone was engineered to express the complete ORF with an expression tag. Expression varies depending on the nature of the gene.

Components: The ORF clone is ion-exchange column purified and shipped in a 2D barcoded Matrix tube containing 10ug of transfection-ready, dried plasmid DNA (reconstitute with 100 ul of water).

Reconstitution Method:

1. Centrifuge at 5,000xg for 5min.
2. Carefully open the tube and add 100ul of sterile water to dissolve the DNA.
3. Close the tube and incubate for 10 minutes at room temperature.
4. Briefly vortex the tube and then do a quick spin (less than 5000xg) to concentrate the liquid at the bottom.
5. Store the suspended plasmid at -20°C. The DNA is stable for at least one year from date of shipping when stored at -20°C.

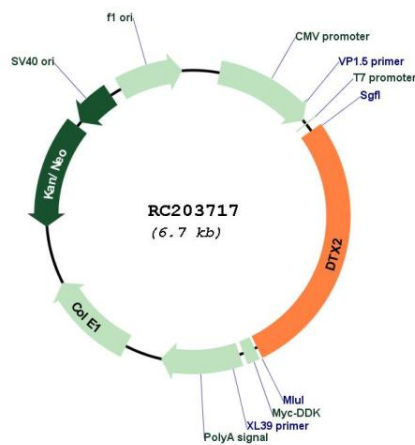
RefSeq: [NM_020892.1](#), [NP_065943.1](#)

RefSeq Size: 2835 bp

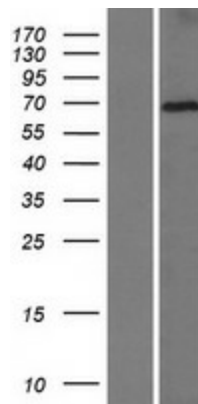
RefSeq ORF: 1869 bp

Locus ID: 113878
UniProt ID: [Q86UW9](#)
Cytogenetics: 7q11.23
Domains: RING, WWE
Protein Families: Druggable Genome
Protein Pathways: Notch signaling pathway
MW: 67.2 kDa
Gene Summary: DTX2 functions as an E3 ubiquitin ligase (Takeyama et al., 2003 [PubMed 12670957]). [supplied by OMIM, Nov 2009]

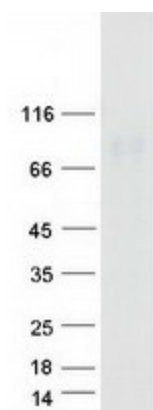
Product images:



Circular map for RC203717



Western blot validation of overexpression lysate (Cat# [LY420164]) using anti-DDK antibody (Cat# [TA50011-100]). Left: Cell lysates from untransfected HEK293T cells; Right: Cell lysates from HEK293T cells transfected with [RC213418] using transfection reagent MegaTran 2.0 (Cat# [TT210002]).



Coomassie blue staining of purified DTX2 protein (Cat# [TP303717]). The protein was produced from HEK293T cells transfected with DTX2 cDNA clone (Cat# RC203717) using MegaTran 2.0 (Cat# [TT210002]).