

## Product datasheet for RC203712

### NDRG2 (NM\_201538) Human Tagged ORF Clone

#### Product data:

Product Type:	Expression Plasmids
Product Name:	NDRG2 (NM_201538) Human Tagged ORF Clone
Tag:	Myc-DDK
Symbol:	NDRG2
Synonyms:	SYLD
Mammalian Cell Selection:	Neomycin
Vector:	pCMV6-Entry (PS100001)
E. coli Selection:	Kanamycin (25 ug/mL)
ORF Nucleotide Sequence:	>RC203712 ORF sequence Red=Cloning site Blue=ORF Green=Tags(s)

TTTTGTAATACGACTCACTATAGGGCGCCGGGAATTCGTCGACTGGATCCGGTACCGAGGAGATCTGCC  
GCC**CGATCGCC**

ATGGCGGAGCTGCAGGAGGTGCAGATCACAGAGGAGAAGCCACTGTTGCCAGGACAGACGCCTGAGGCGG  
CCAAGACTCACTCTGTGGAGACACCATACTGTCTGTCACTTTCACTGTCTATGGCACCCCAAACCCAA  
ACGCCAGCGATCCTTACCTACCACGATGTGGACTCACTATAAATCTTGCTTCCAGCCACTGTTTCAG  
TTCGAGGACATGCAGGAAATCATTGAGAACTTTGTGCGGGTTCATGTGGATGCCCTGGAATGGAAGAGG  
GAGCCCTGTGTCCCTTTGGGATATCAGTACCATCTCTGGACCAGCTTGCAGACATGATCCCTTGCCT  
CCTGCAGTACCTAAATTTCTCTACAATAATTGGAGTTGGTGTGGAGCTGGAGCCTACATCCTGGCGAGA  
TATGCTCTTAACCCCGGACACTGTTGAAGTCTTGTCCCTCATCAACATTGATCCCAATGCCAAGGGTT  
GGATGGATTGGGACGCCACAAGCTAACAGGCCTCACCTTCCATTCCGGAGATGATCCTTGGACATCT  
TTTCAGCCAGGAAGAGCTCTCTGGAAATTTCTGAGTTGATACAAAAGTACAGAAATATCATTACACATGCA  
CCCAACCTGGATAACATTGAATTGACTGGAACAGCTACAACAACCGCCGAGACCTGAACCTTTGAGCGTG  
GAGGTGATATCACCTCAGGTGTCTGTGATGCTGGTGGTAGGAGACCAAGCACCTCATGAAGATGCAGT  
GGTGAATGTAACCTCAAACCTGGACCCACCCAGACCTCGTTCCTCAAGATGGCTGACTCCGGAGGTCAG  
CCCCAGCTGACTCAGCCAGGCAAGCTGACCGAGGCCTTCAAGTACTTCTGCAAGGCATGGGCTACATGG  
CCTCATCCTGCATGACTCGCCTGTCCCGTCTCGTACAGCCTCTCTGACCAGTGCAGCATCCGTTGATGG  
CAACCGTCCCGCTCTCGCACCTGTCCAGAGCAGCGAGTCTGGAACCTTTCTTCGGGGCCCCGGGG  
CACACCATGGAGGTCTCCTGT

**ACGCGT**ACGCGGCCGCTCGAGCAGAAACTCATCTCAGAAGAGGATCTGGCAGCAAATGATATCCTGGATT  
ACAAGGATGACGACGATAAGGTTAA



[View online »](#)

**Protein Sequence:** >RC203712 protein sequence  
Red=Cloning site Green=Tags(s)

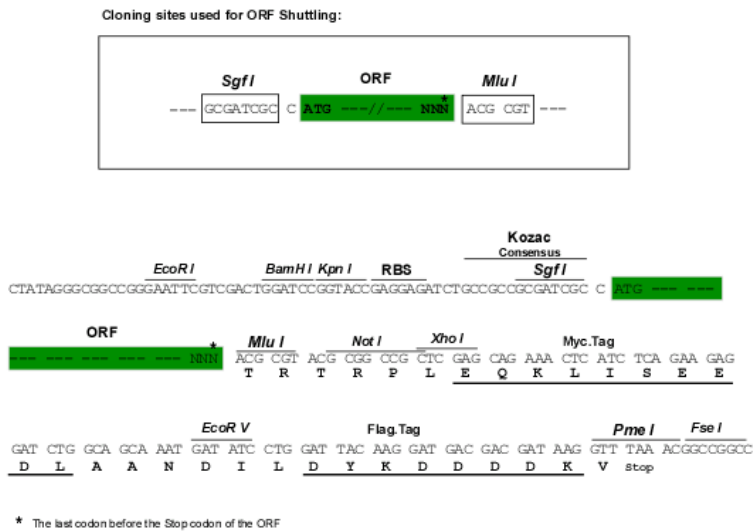
MAELQEVQITEEKPLLPGQTPEAAKTHSVETPYVSVTFTVYGTPKPKRPAILTYHDVGLNYKSCFQPLFQ  
 FEDMQEIIQNFVRVHVDAPGMEEGAPVFPLGYQYPSLDQLADMIPCVLQYLNFSITIGVGVGAGAYILAR  
 YALNHPDVEGLVLINIDPNAKGWMDWAAHKL TGLTSSIPEMILGHLSQEELSGNSELIQKYRNIITHA  
 PNLDNIELYWNSYNNRRDLNFERGGDITLRCPVMLVVGDDQAPHEDAVVECSKLDPTQTSFLKMADSGGQ  
 PQLTQPGKLTEAFKYFLQGMGYMASSCMTRLRSRTASL TSAASVDGNRSRRTL SQSSESGTLSSGPPG  
 HTMEVSC

TRTRPLEQKLISEEDLAANDILDYKDDDDKV

**Chromatograms:** [https://cdn.origene.com/chromatograms/mk6302\\_b10.zip](https://cdn.origene.com/chromatograms/mk6302_b10.zip)

**Restriction Sites:** SgfI-MluI

**Cloning Scheme:**



**ACCN:** NM\_201538

**ORF Size:** 1071 bp

**OTI Disclaimer:** The molecular sequence of this clone aligns with the gene accession number as a point of reference only. However, individual transcript sequences of the same gene can differ through naturally occurring variations (e.g. polymorphisms), each with its own valid existence. This clone is substantially in agreement with the reference, but a complete review of all prevailing variants is recommended prior to use. [More info](#)

**OTI Annotation:** This clone was engineered to express the complete ORF with an expression tag. Expression varies depending on the nature of the gene.

**Components:** The ORF clone is ion-exchange column purified and shipped in a 2D barcoded Matrix tube containing 10ug of transfection-ready, dried plasmid DNA (reconstitute with 100 ul of water).

**Reconstitution Method:**

1. Centrifuge at 5,000xg for 5min.
2. Carefully open the tube and add 100ul of sterile water to dissolve the DNA.
3. Close the tube and incubate for 10 minutes at room temperature.
4. Briefly vortex the tube and then do a quick spin (less than 5000xg) to concentrate the liquid at the bottom.
5. Store the suspended plasmid at -20°C. The DNA is stable for at least one year from date of shipping when stored at -20°C.

**RefSeq:** [NM\\_201538.1](#), [NP\\_963832.1](#)

**RefSeq Size:** 2010 bp

**RefSeq ORF:** 1074 bp

**Locus ID:** 57447

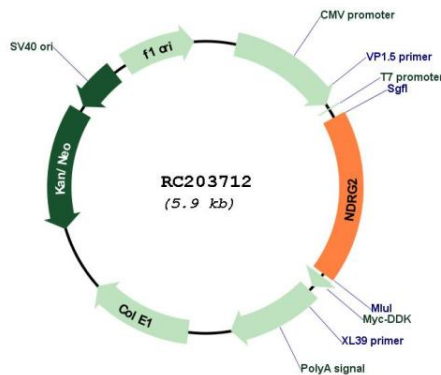
**UniProt ID:** [Q9UN36](#)

**Cytogenetics:** 14q11.2

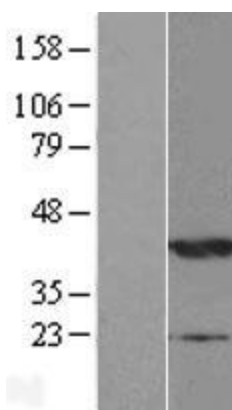
**MW:** 39.3 kDa

**Gene Summary:** This gene is a member of the N-myc downregulated gene family which belongs to the alpha/beta hydrolase superfamily. The protein encoded by this gene is a cytoplasmic protein that may play a role in neurite outgrowth. This gene may be involved in glioblastoma carcinogenesis. Alternative splicing results in multiple transcript variants. [provided by RefSeq, Aug 2017]

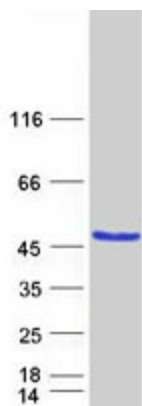
### Product images:



Circular map for RC203712



Western blot validation of overexpression lysate (Cat# [LY404443]) using anti-DDK antibody (Cat# [TA50011-100]). Left: Cell lysates from untransfected HEK293T cells; Right: Cell lysates from HEK293T cells transfected with [RC219878] using transfection reagent MegaTran 2.0 (Cat# [TT210002]).



Coomassie blue staining of purified NDRG2 protein (Cat# [TP303712]). The protein was produced from HEK293T cells transfected with NDRG2 cDNA clone (Cat# RC203712) using MegaTran 2.0 (Cat# [TT210002]).