

Product datasheet for **RC203705**

CYPIVF11 (CYP4F11) (NM_021187) Human Tagged ORF Clone

Product data:

Product Type:	Expression Plasmids
Product Name:	CYPIVF11 (CYP4F11) (NM_021187) Human Tagged ORF Clone
Tag:	Myc-DDK
Symbol:	CYPIVF11
Synonyms:	CYPIVF11
Mammalian Cell Selection:	Neomycin
Vector:	pCMV6-Entry (PS100001)
E. coli Selection:	Kanamycin (25 ug/mL)



[View online »](#)

ORF Nucleotide Sequence:

>RC203705 ORF sequence
 Red=Cloning site Blue=ORF Green=Tags(s)

TTTTGTAATACGACTCACTATAGGGCGGCCGGAATTCGTCGACTGGATCCGGTACCGAGGAGATCTGCC
 GCC**GCGATCGCC**

ATGCCGACGTGAGCCTGTCTGGCTGGGCTCGGGCCCGTGGCAGCATCCCCGTGGCTGCTTCTGCTGC
 TGGTTGGGGCTCCTGGCTCCTGGCCCGCTGGCCTGGACCTACACCTTCTATGACAACTGCCGCCG
 CCTCCAGTGTTCCTCAACCCCGAAACAGAAGTGGTTTTGGGACACCAGGGCTGGTCACTCCACG
 GAAGAGGGCATGAAGACATTGACCCAGCTGGTACCACATATCCCAGGGCTTTAAGTTGTGGTGGGTC
 CTACCTTCCCCCTCTATTTTATGCCACCCTGACATCATCCGGCCTATCACCAGTGCCTCAGCTGCTGT
 CGCACCAAGGATATGATTTTCTATGGCTTCTGAAGCCCTGGCTGGGGATGGGCTCCTGCTGAGTGGT
 GGTGACAAAGTGGAGCCGCCACCGTCGGATGTTGACGCCTGCCTCCATTTCAACATCTTGAAGCCTTATA
 TGAAGATTTTCAACAAGAGTGTGAACATCATGCACGACAAGTGGCAGCGCTGGCCTCAGAGGGCAGCGC
 CAGACTGGACATGTTTGAACACATCAGCCTCATGACCTTGACAGTCTGCAGAAATGTGTCTTCAGCTTT
 GAAAGCAATTGTCAAGGAGAAGCCAGTGAATATATTGCCGCCATCTGGAGCTCAGTGCCTTTGTAGAAA
 AGAGAAACCAGCAGATTCTTTCACACGACTTCTGTATTATCTCACTCCTGATGGGCAGCGCTCCG
 CAGGGCTGCCACCTGGTGCACGACTTACAGATGCCGTATCCAGGAGCGGCCGCCACCTCCCCACT
 CAGGGTATTGATGATTTCTCAAGAACAAGGCAAAGTCCAAGACTTTAGACTTCATTGATGTGCTTCTGC
 TGAGCAAGGATGAAGATGGGAAGGAATTGTCTGATGAGGACATAAGAGCAGAAGCTGACACCTTCATGTT
 TGAGGGCCATGACACTACAGCCAGTGGTCTCCTGGGCTCTATACCACCTTGAAGCACCAGAATAC
 CAGGAACAGTCCCGCAAGAAGTCAAGAGCTTCTGAAGGACCGTGAACCTATAGAGATGAATGGGACG
 ACCTGGCCAGCTGCCCTTCTGACCATGTGCATTAAGGAGACCTGCGGTTGCATCCCCAGTCCCGGT
 CATCTCCCGATGTTGCACGACGACTTTGTGCTCCAGACGCGCGTCAATCCCAAGGCAATTGTCTGC
 CTCATCAATATTATCGGGATCCATTACAACCAACTGTGTGGCCAGACCTGAGGTCTACGACCCCTTCC
 GTTTCAACCAAGAGAACATCAAGGAGAGGTACCTCTGGCTTTTATTCCCTTCTCGGCAGGGCCAGAAA
 CTGCATCGGGCAGGCGTTCGCCATGGCTGAGATGAAGGTGGTCTGGCGCTCACGCTGCTGCACTTCCGC
 ATCCTGCCGACCCACACTGAACCCGCAGGAAACCCGAGCTGATATTGCGCGCAGAGGTGGACTTTGGC
 TCGGGTGGAGCCCTGGGTGCGAACTCACAG

ACGCGTACGCGGCCGCTCGAGCAGAAACTCATCTCAGAAGAGGATCTGGCAGCAAATGATATCTGGATT
 ACAAGGATGACGACGATAAGGTTTAA

Protein Sequence:

>RC203705 protein sequence
 Red=Cloning site Green=Tags(s)

MPQLSLSWLGLGPVAASPWL LLLL VGGSWLLARVLAWTYTFYDNCRRLLQCFPPPKQNWFWGHQGLVPTP
 EEGMKTLLTQLVTTY PQGFKLWLGPTFPLLLILCHPDIIRPITSASA AVAPKDMIFYGFLKPWLG DGLLLSG
 GDKWSRHRMLTPAFHFN LKPYMKIFNKS VNIIMHDKWQRLASEG SARLDMFEHISLMTLDSLQKCVFSF
 ESNCQEKPSEYIAAILELSAFVEKRNQ ILLHTDFLYYLTPDQGRFRRACHLVHDFDVAIQERRRLLPT
 QGIDDFLKNKAKSKTLD FIDVLLL SKDEDGKELSD EDIRAEADTFMFEHDTTASGLSWLYHLAKHPEY
 QEQRQEVQELLKDREPIE IEWDDLAQLPFLTMCIKESLRLHPPVPVISRCTQDFVLPDGRVIPKGI VC
 LINIIGIHYNPTVWPDPEVYDPFRFNQENIKERSPLAFIPFSAGPRNCIGQAFAMAEMKVV LALLLHFR
 ILPTHTEPRRKPELILRAEGLWLRVEPLGANSQ

TRTRPLEQKLISEEDLAANDILDYKDDDDKV

Chromatograms:

https://cdn.origene.com/chromatograms/mk6539_g10.zip

Restriction Sites:

Sgfl-MluI

Cloning Scheme:


ACCN: NM_021187

ORF Size: 1572 bp

OTI Disclaimer: The molecular sequence of this clone aligns with the gene accession number as a point of reference only. However, individual transcript sequences of the same gene can differ through naturally occurring variations (e.g. polymorphisms), each with its own valid existence. This clone is substantially in agreement with the reference, but a complete review of all prevailing variants is recommended prior to use. [More info](#)

OTI Annotation: This clone was engineered to express the complete ORF with an expression tag. Expression varies depending on the nature of the gene.

Components: The ORF clone is ion-exchange column purified and shipped in a 2D barcoded Matrix tube containing 10ug of transfection-ready, dried plasmid DNA (reconstitute with 100 ul of water).

- Reconstitution Method:**
1. Centrifuge at 5,000xg for 5min.
 2. Carefully open the tube and add 100ul of sterile water to dissolve the DNA.
 3. Close the tube and incubate for 10 minutes at room temperature.
 4. Briefly vortex the tube and then do a quick spin (less than 5000xg) to concentrate the liquid at the bottom.
 5. Store the suspended plasmid at -20°C. The DNA is stable for at least one year from date of shipping when stored at -20°C.

RefSeq: [NM_021187.3](#)

RefSeq Size: 3395 bp

RefSeq ORF: 1575 bp

Locus ID: 57834

UniProt ID: [Q9HBI6](#)

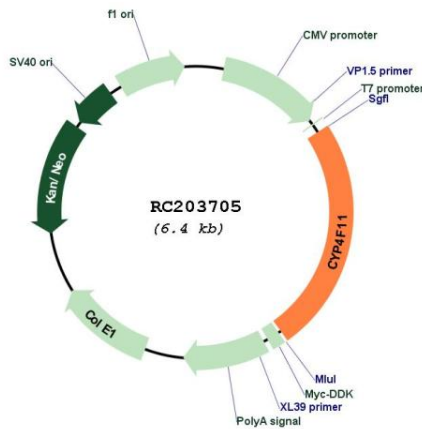
Cytogenetics: 19p13.12

Protein Families: Druggable Genome, P450, Transmembrane

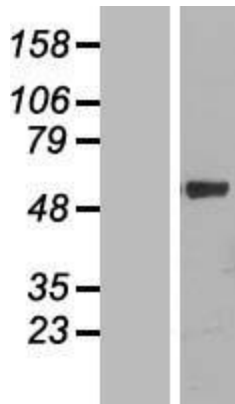
MW: 60.2 kDa

Gene Summary: This gene, CYP4F11, encodes a member of the cytochrome P450 superfamily of enzymes. The cytochrome P450 proteins are monooxygenases which catalyze many reactions involved in drug metabolism and synthesis of cholesterol, steroids and other lipids. This gene is part of a cluster of cytochrome P450 genes on chromosome 19. Another member of this family, CYP4F2, is approximately 16 kb away. Alternatively spliced transcript variants encoding the same protein have been found for this gene. [provided by RefSeq, Jul 2008]

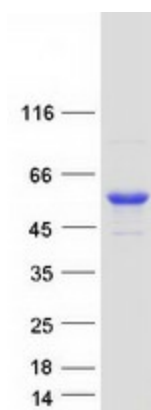
Product images:



Circular map for RC203705



Western blot validation of overexpression lysate (Cat# [LY427033]) using anti-DDK antibody (Cat# [TA50011-100]). Left: Cell lysates from untransfected HEK293T cells; Right: Cell lysates from HEK293T cells transfected with [RC225897] using transfection reagent MegaTran 2.0 (Cat# [TT210002]).



Coomassie blue staining of purified CYP4F11 protein (Cat# [TP303705]). The protein was produced from HEK293T cells transfected with CYP4F11 cDNA clone (Cat# RC203705) using MegaTran 2.0 (Cat# [TT210002]).