

Product datasheet for **RC203704**

NPEPL1 (NM_024663) Human Tagged ORF Clone

Product data:

Product Type:	Expression Plasmids
Product Name:	NPEPL1 (NM_024663) Human Tagged ORF Clone
Tag:	Myc-DDK
Symbol:	NPEPL1
Synonyms:	bA261P9.2
Mammalian Cell Selection:	Neomycin
Vector:	pCMV6-Entry (PS100001)
E. coli Selection:	Kanamycin (25 ug/mL)



[View online »](#)

ORF Nucleotide Sequence:

>RC203704 ORF sequence
 Red=Cloning site Blue=ORF Green=Tags(s)

TTTTGTAATACGACTCACTATAGGGCGGCCGGAATTCGTCGACTGGATCCGGTACCGAGGAGATCTGCC
 GCC**GCGATCGCC**

ATGGCGAACGTGGGGCTGCAGTTCAGGCGAGCGGGGGACTCGGACCCACAGAGCCGGCCCTGTCTGC
 TGCTCGGGCAGCTGCACCACTGCACCGGTGCCCTGGAGCCACGTCCGGGGAAGCTGCAGCCCCGGT
 CACCGAGGAGCTCTGGCAGGCTGCCCTGAGCACGCTCAACCCCAACCCACGACAGCTGTCCCCTCTAC
 CTGAACTACGCCACCGTGGCTGCCCTGCCCTGCAGGGTGAAGCGGACAAACAGCCCTCGGCCGCCACT
 TCATCACGCGGCTGGTGCAGGCTGCCCTGCCCGCCGGAGCGCATCGCTGCATTGTGATGGTCTGCGAGCA
 GCCGGAGGTCTTTGCTTCCGCTGTGCCCTGGCCCGGCCTTCCCGCTGTTACCCACCGCTCAGGTGCC
 TCTCGGCGCTTGAGAAGAAGACGGTACCCTGGAGTTTTTCTGGTGGGACAAGACAACGGGCCGGTGG
 AGGTGTCCACATTGCAGTGTAGCGAATGCCACAGACGGCGTGGGCTAGCAGCCCGCATCGTGGACAC
 ACCCTGCAATGAGATGAACACCGACACCTTCTCGAGGAGATTAACAAAGTTGAAAGGAGCTGGGGATC
 ATCCCAACCATCATCCGGGATGAGGAATGAAGACGAGAGGATTTGGAGGAATCTATGGGTTGGCAAAG
 CCGCCCTGCATCCCCAGCCCTGGCCGTCTCAGCCACACCCAGATGGAGCCACGACACCATCGCCTG
 GGTGGGCAAAGGCATCGTCTATGACACTGGAGGCTCAGCATCAAAGGGAAGACTACCATGCCGGGGATG
 AAGCGAGACTGCGGGGTGCTGCGGCCCTCGGGGCCCTCAGAGCCGCAATCAAGCAGGGTTTCAAAG
 ACAACCTCCACGCTGTGTCTGCTGGTGAAGTCCGGTGGGGCCCAATGCGACAAGGCCAGATGACAT
 CCACCTGCTGACTCAGGAAGACGGTGGAAATCAACAACACGGATGCCGAGGCGAGGCTGGTGTGGCA
 GATGGCGTGTCTATGCTTGAAGGACCTGGGGCCGACATCATCTGGACATGGCCACCCTGACCGGGG
 CTCAGGGCATTGCCACAGGAAGTACCACGCCGCGGTGCTACCAACAGCGCTGAGTGGGAGCCGCTG
 TGTGAAGCGGGGAGGAAGTGTGGGACCTGGTGCACCCGCTGGTCTACTGCCCGAGCTGCACTTCAGC
 GAGTTCACCTCAGCTGTGGCGGACATGAAGAACTCAGTGGCGGACCGAGACAACAGCCCAAGCTCTGTG
 CTGGCCTTTCATCGCCTCACACATCGGCTTCGACTGGCCCGGAGTCTGGGTCCACCTGGACATTGCTGC
 ACCGGTGCATGCTGGTGAAGCAGCCACAGGCTTCGGTGTGGCCCTCCTGCTGGCGCTTTCGGCCGTGCC
 TCTGAGGACCCTCTGCTGAACCTGGTGTCCCACTGGGCTGTGAGGTGGATGTCGAGGAGGGGGACCTGG
 GGAGGGACTCCAAGAGACGCAGGCTTGTG

ACGCGTACGCGGCCGCTCGAGCAGAACTCATCTCAGAAGAGGATCTGGCAGCAAATGATATCTGGATT
 ACAAGGATGACGACGATAAGGTTTAA

Protein Sequence:

>RC203704 protein sequence
 Red=Cloning site Green=Tags(s)

MANVGLQFQASAGSDPQSRPLLLGLHHLHRVPWSHVRGKLQPRVTEELWQAALSTLNPNTDSCPLY
 LNYATVAALPCRVSRRHNSPSAAHFITRLVRTCLPPGAHRCIVMVCEQPEVFASACALARAFPLFTHRSGA
 SRRLEKKTVTVEFFLVGQDNGPVEVSTLQCLANATDGVRLAARIVDTPCNEMNTDTFLEEINKVGKELGI
 IPTIIRDEELKTRFGGIYGVGKAALHPPALAVLSHTPDGATQTIAWVGKIVYDTGGLSIKKTTPGM
 KRDCGAAAVLGAFFRAAIKQGFKNLHAFVCLAENSVGNATRPDDIHLLYSGKTVEINNTDAEGRVLVA
 DGVSACKDLGADIILDMATLTGAQGIATGKYHAAVL TNSAEWEAACVKAGRKCGDLVHPLVYCPHELHFS
 EFTSAVADMKNSVARDNPSSCAGLFIASHIGFDWPGVWVHLDIAAPVHAGERATGFGVALLLALFGRA
 SEDPLLNLVSPLGCEVDVEEDLGRDSKRRRLV

TRTRPLEQKLISEEDLAANDILDYKDDDDKV

Chromatograms:

https://cdn.origene.com/chromatograms/mk6538_g03.zip

Restriction Sites:

SgfI-MluI

Cloning Scheme:


ACCN: NM_024663

ORF Size: 1569 bp

OTI Disclaimer: The molecular sequence of this clone aligns with the gene accession number as a point of reference only. However, individual transcript sequences of the same gene can differ through naturally occurring variations (e.g. polymorphisms), each with its own valid existence. This clone is substantially in agreement with the reference, but a complete review of all prevailing variants is recommended prior to use. [More info](#)

OTI Annotation: This clone was engineered to express the complete ORF with an expression tag. Expression varies depending on the nature of the gene.

Components: The ORF clone is ion-exchange column purified and shipped in a 2D barcoded Matrix tube containing 10ug of transfection-ready, dried plasmid DNA (reconstitute with 100 ul of water).

- Reconstitution Method:**
1. Centrifuge at 5,000xg for 5min.
 2. Carefully open the tube and add 100ul of sterile water to dissolve the DNA.
 3. Close the tube and incubate for 10 minutes at room temperature.
 4. Briefly vortex the tube and then do a quick spin (less than 5000xg) to concentrate the liquid at the bottom.
 5. Store the suspended plasmid at -20°C. The DNA is stable for at least one year from date of shipping when stored at -20°C.

RefSeq: [NM_024663.4](#)

RefSeq Size: 2217 bp

RefSeq ORF: 1572 bp

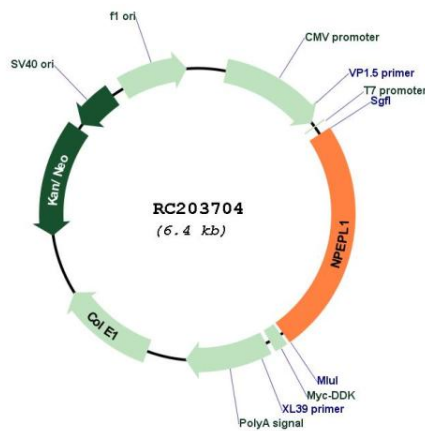
Locus ID: 79716

UniProt ID: [Q8NDH3](#)

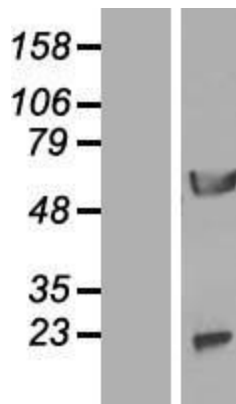
Cytogenetics: 20q13.32

Domains: Peptidase_M17
Protein Families: Druggable Genome, Protease
MW: 55.9 kDa
Gene Summary: Probably catalyzes the removal of unsubstituted N-terminal amino acids from various peptides.[UniProtKB/Swiss-Prot Function]

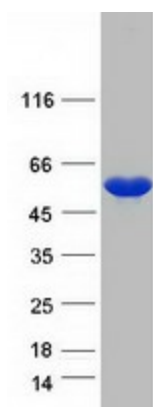
Product images:



Circular map for RC203704



Western blot validation of overexpression lysate (Cat# [LY411179]) using anti-DDK antibody (Cat# [TA50011-100]). Left: Cell lysates from untransfected HEK293T cells; Right: Cell lysates from HEK293T cells transfected with RC203704 using transfection reagent MegaTran 2.0 (Cat# [TT210002]).



Coomassie blue staining of purified NPEPL1 protein (Cat# [TP303704]). The protein was produced from HEK293T cells transfected with NPEPL1 cDNA clone (Cat# RC203704) using MegaTran 2.0 (Cat# [TT210002]).