

Product datasheet for **RC203701**

BAALC (NM_024812) Human Tagged ORF Clone

Product data:

Product Type: Expression Plasmids
Product Name: BAALC (NM_024812) Human Tagged ORF Clone
Tag: Myc-DDK
Symbol: BAALC
Mammalian Cell Selection: Neomycin
Vector: pCMV6-Entry (PS100001)
E. coli Selection: Kanamycin (25 ug/mL)
ORF Nucleotide Sequence: >RC203701 ORF sequence
Red=Cloning site Blue=ORF Green=Tags(s)

TTTTGTAATACGACTCACTATAGGGCGGCCGGAATTCGTCGACTGGATCCGGTACCGAGGAGATCTGCC
GCC**CGATCGCC**

ATGGGCTGCGGTGGGAGCCGGCGGATGCCATCGAGCCCCGCTACTACGAGAGCTGGACCCGGGAGACAG
AATCCACCTGGCTCACCTACACCGACTCGGACGCGCCGCCAGCGCCGCCCGCCCGGACAGCGGCCCGCA
AGCGGGCGGCCTGCACTCGGGCATGCTGGAAGATGGACTGCCCTCCAATGGTGTGCCCGATCTACAGCC
CCAGGTGGAATACCCAACCCAGAGAAGAAGACGAACTGTGAGACCCAGTGCCAAATCCCCAGAGCCTCA
GCTCAGGCCCTTGACCCAGAAACAGAATGGCCTTCAGACCACAGAGGCTAAAAGAGATGCTAAGAGAAT
GCCTGCAAAGAAGTCACCATAATGTAACAGATAGCATCCAACAGATGGACAGAAGTCGAAGAATCACA
AAGAACTGTGCAAC

ACGCGTACGCGGCCGCTCGAGCAGAACTCATCTCAGAAGAGGATCTGGCAGCAAATGATATCCTGGATT
ACAAGGATGACGACGATAAGGTTTAA

Protein Sequence: >RC203701 protein sequence
Red=Cloning site Green=Tags(s)

MCGGSRADAIEPRYYESWTRETESTWLTYTDSAPPSSAAAPDSGPEAGGLHSGMLEDGLPSNGVPRSTA
PGGIPNPEKKTNCETQCPNPQSLSSGPLTQKQNLQTTEAKRDAKMPAKEVTINVTDSIQMDSRRIT
KNCVN

TRTRPLEQKLISEEDLAANDILDYKDDDDKV

Chromatograms: https://cdn.origene.com/chromatograms/mk6087_a04.zip

Restriction Sites: Sgfl-Mlul



[View online >](#)

Cloning Scheme:


ACCN: NM_024812

ORF Size: 435 bp

OTI Disclaimer: The molecular sequence of this clone aligns with the gene accession number as a point of reference only. However, individual transcript sequences of the same gene can differ through naturally occurring variations (e.g. polymorphisms), each with its own valid existence. This clone is substantially in agreement with the reference, but a complete review of all prevailing variants is recommended prior to use. [More info](#)

OTI Annotation: This clone was engineered to express the complete ORF with an expression tag. Expression varies depending on the nature of the gene.

Components: The ORF clone is ion-exchange column purified and shipped in a 2D barcoded Matrix tube containing 10ug of transfection-ready, dried plasmid DNA (reconstitute with 100 ul of water).

- Reconstitution Method:**
1. Centrifuge at 5,000xg for 5min.
 2. Carefully open the tube and add 100ul of sterile water to dissolve the DNA.
 3. Close the tube and incubate for 10 minutes at room temperature.
 4. Briefly vortex the tube and then do a quick spin (less than 5000xg) to concentrate the liquid at the bottom.
 5. Store the suspended plasmid at -20°C. The DNA is stable for at least one year from date of shipping when stored at -20°C.

RefSeq: [NM_024812.3](#)

RefSeq Size: 2859 bp

RefSeq ORF: 438 bp

Locus ID: 79870

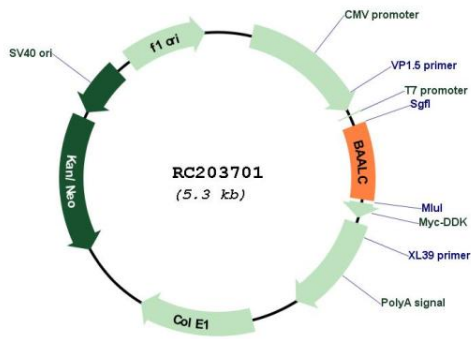
UniProt ID: [Q8WXS3](#)

Cytogenetics: 8q22.3

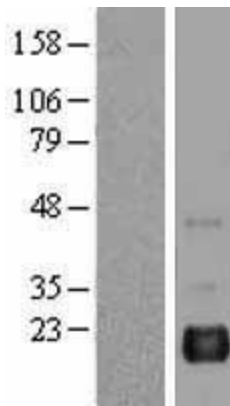
MW: 15.6 kDa

Gene Summary: This gene was identified by gene expression studies in patients with acute myeloid leukemia (AML). The gene is conserved among mammals and is not found in lower organisms. Tissues that express this gene develop from the neuroectoderm. Multiple alternatively spliced transcript variants that encode different proteins have been described for this gene; however, some of the transcript variants are found only in AML cell lines. [provided by RefSeq, Jul 2008]

Product images:



Circular map for RC203701



Western blot validation of overexpression lysate (Cat# [LY403032]) using anti-DDK antibody (Cat# [TA50011-100]). Left: Cell lysates from untransfected HEK293T cells; Right: Cell lysates from HEK293T cells transfected with RC203701 using transfection reagent MegaTran 2.0 (Cat# [TT210002]).