

Product datasheet for **RC203700**

ADCK4 (COQ8B) (NM_024876) Human Tagged ORF Clone

Product data:

Product Type:	Expression Plasmids
Product Name:	ADCK4 (COQ8B) (NM_024876) Human Tagged ORF Clone
Tag:	Myc-DDK
Symbol:	ADCK4
Synonyms:	ADCK4; NPHS9
Mammalian Cell Selection:	Neomycin
Vector:	pCMV6-Entry (PS100001)
E. coli Selection:	Kanamycin (25 ug/mL)



[View online »](#)

ORF Nucleotide Sequence:

>RC203700 ORF sequence
 Red=Cloning site Blue=ORF Green=Tags(s)

TTTTGTAATACGACTCACTATAGGGCGGCCGGGAATTCGTCGACTGGATCCGGTACCGAGGAGATCTGCC
 GCC**GCGATCGCC**

ATGTGGCTGAAGGTGGGGGCTACTTCGGGGACCGGTGGACAGCTGGCCAGACTGTTGGTTGGCCTT
 GTGGGGCCCTGGGGCCTGGGCCCCACCGCTGGGGACCATGTGGAGTTCTTGGGCCCAAAAGTTTTACCA
 GGATGGGCCTGGGAGAGGCTGGGTGAGGAGGACATTCGAGGGCACGGGAGGCCGTCACAGGAAGACA
 CCCCAGCCAGCTGAGTGACCGCTCTCGAGAACGAAGGTGCCTGCCGCCATCAGCCGCTTGCCCA
 ACTTTGGGGACTGGCTGTGGGCTTGGGCTAGGAGTACTGGCCGAGATGGCTAAGAAAGTCCATGCCAGG
 AGGTCTGCTGCAGTCAAGGGTGGTCTGGGCTGGACTCCAGCCCTTCTGTGCGAGGCCAATGCCGAG
 CGGATTGTGCAGACCTTATGTACAGTTCGAGGGGCCCCCTCAAGTTGGCCAGATGCTCAGCATCCAGG
 ACAACAGCTTCATCAGCCCTCAGCTGCAGCACATCTTTGAGCGGGTCCGCCAGAGCGCCGACTTCATGCC
 CCGCTGGCAGATGCTGAGAGTTCTGAAGAGGAGCTCGGCAGGGACTGGCAGGCCAAGGTGGCCTCCTTG
 GAGGAGGTGCCCTTTGCCGCTGCCTCAATTGGGCAGGTGCACCAGGGCCTGCTGAGGGACGGGACGGAGG
 TGGCCGTGAAGATCCAGTACCCCGCATAGCCAGAGCATTACAGAGCGATGTCCAGAACCTGCTGGCGGT
 ACTCAAGATGAGCGCGGCCCTGCCCGGGGCTGTTTGGCCGAGCAGACCTGCAGGCCTTGACGACAGGAG
 CTGGCTTGGGAGTGTGACTACCGTCTGAGGGCGCTTGTGCCAGAAATTCAGGCAGCTGCTGGCAAATG
 ACCCTTCTTCCGGTCCCAGCCGTGGTAAAGGAGCTGTGCACGACACGGGTGCTGGGCATGGAGCTGGC
 TGGAGGGTCCCCTGGACCACTGCCAGGGCCTAAGCCAGGACCTGCGGAACAGATTTGCTTCCAGCTC
 CTGACGCTGTGTCTCGGGAGCTGTTGAGTCCGATTCATGCAGACTGACCCAACTGGGCAACTTCC
 TGTATGATGCCCTCAGCCACCAAGTGCACCTGGACTTGGTGCAAGCCGGGAGTTTGGGACAGAGT
 CACAGACCATTACATCGAGGTGGTGAAGCTGCAGCTGATGGAGACAGAGACTGTGTCTGCAGAAGTCC
 AGGGACCTCAAATTCCTCACAGGCTTGAACCAAGGCATTCTCCGACGCCACGTGGAGGCAGTATGA
 TCCTGGGGGAGCCTTTCGCCACCCAGGGCCCTTACGACTTGGGTGGGGGAAACGGCCCGCCGATACA
 GGACCTCATCCCGGTGCTGCTGCGGCACCGGCTGTGTCCCCACCCGAGGAGACCTATGCCCTGCACCGC
 AAGCTGGCAGGGGCTTCTGGCCTGTGCCACCTCCGAGCCACATCGCCTGCAGGGACCTTCCAGG
 ACACCTACCACCGCTACTGGCCAGTCCGACCCAGCAGCCACTGCCGCAGCCTCCCACCAAAGG
 GGACTCTGGGTGGATCCCTCA

ACGCGTACGCGGCCGCTCGAGCAGAAACTCATCTCAGAAGAGGATCTGGCAGCAAATGATATCCTGGATT
 ACAAGGATGACGACGATAAGGTTTAA

Protein Sequence:

>RC203700 protein sequence
 Red=Cloning site Green=Tags(s)

MWLKVGLLRGTGGQLGQTVGWPCGALGPGPHRWGPCGGSWAQKFYQDGPGRGLGEEDIRRAREARPRKT
 PRPQLSDRSRERKVPASRISRLANFGGLAVGLGLVLAEMAKKSMPGGRLQSEGGSGLDSSPFLSEANAE
 RIVQTLCTVRGAALKVQMLSIQDNSFISPQLQHIFERVRQSADFMPRWQMLRVLEEELGRDQAKVASL
 EEVPFAAASIGQVHQGLLRDGTAVVAVKIYQPIAQSIQSDVQNLAVLKMMSAALPAGLFAEQSLQALQQE
 LAWECDYRREAACAQNFQRLANDPFFRVPVAVKELCTTRVLMELAGGVPLDQCQGLSQDLRNQICFQL
 LTLCLRELFEFRMQDPNWANFLYDASSHQVTLDFGASREFGTEFTDHYIEVVKAAADGDRDCLVQKS
 RDLKFLTGFKAFSDAHEAVMILGEPFATQGPYDFGSGETARRIQDLIPVLLRHRLCPPPEETVALHR
 KLAGAFLACAHLRAHIACRDLFQDQTYHRYWASRQPDAAATAGSLPTKGDSWVDP

TRTRPLEQKLISEEDLAANDILDYKDDDDKV

Chromatograms:

https://cdn.origene.com/chromatograms/mk6138_b09.zip

Restriction Sites:

Sgfl-MluI

Cloning Scheme:


ACCN: NM_024876

ORF Size: 1632 bp

OTI Disclaimer: The molecular sequence of this clone aligns with the gene accession number as a point of reference only. However, individual transcript sequences of the same gene can differ through naturally occurring variations (e.g. polymorphisms), each with its own valid existence. This clone is substantially in agreement with the reference, but a complete review of all prevailing variants is recommended prior to use. [More info](#)

OTI Annotation: This clone was engineered to express the complete ORF with an expression tag. Expression varies depending on the nature of the gene.

Components: The ORF clone is ion-exchange column purified and shipped in a 2D barcoded Matrix tube containing 10ug of transfection-ready, dried plasmid DNA (reconstitute with 100 ul of water).

Reconstitution Method:

1. Centrifuge at 5,000xg for 5min.
2. Carefully open the tube and add 100ul of sterile water to dissolve the DNA.
3. Close the tube and incubate for 10 minutes at room temperature.
4. Briefly vortex the tube and then do a quick spin (less than 5000xg) to concentrate the liquid at the bottom.
5. Store the suspended plasmid at -20°C. The DNA is stable for at least one year from date of shipping when stored at -20°C.

RefSeq: [NM_024876.2](#), [NP_079152.3](#)

RefSeq Size: 2458 bp

RefSeq ORF: 1635 bp

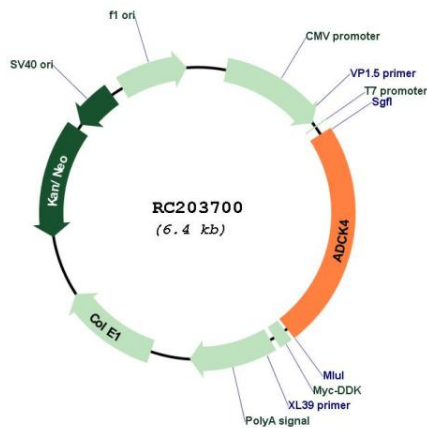
Locus ID: 79934

UniProt ID: [Q96D53](#)

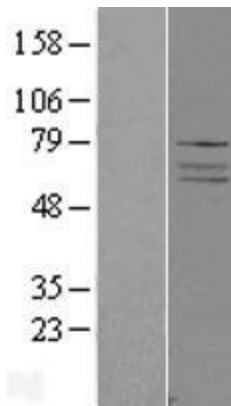
Cytogenetics: 19q13.2
Domains: ABC1
Protein Families: Druggable Genome, Protein Kinase
MW: 60.1 kDa

Gene Summary: This gene encodes a protein with two copies of a domain found in protein kinases. The encoded protein has a complete protein kinase catalytic domain, and a truncated domain that contains only the active and binding sites of the protein kinase domain, however, it is not known whether the protein has any kinase activity. Multiple transcript variants encoding different isoforms have been found for this gene. [provided by RefSeq, Sep 2011]

Product images:



Circular map for RC203700



Western blot validation of overexpression lysate (Cat# [LY403036]) using anti-DDK antibody (Cat# [TA50011-100]). Left: Cell lysates from untransfected HEK293T cells; Right: Cell lysates from HEK293T cells transfected with RC203700 using transfection reagent MegaTran 2.0 (Cat# [TT210002]).