

Product datasheet for **RC203698**

USP33 (NM_201626) Human Tagged ORF Clone

Product data:

Product Type:	Expression Plasmids
Product Name:	USP33 (NM_201626) Human Tagged ORF Clone
Tag:	Myc-DDK
Symbol:	USP33
Synonyms:	VDU1
Mammalian Cell Selection:	Neomycin
Vector:	pCMV6-Entry (PS100001)
E. coli Selection:	Kanamycin (25 ug/mL)



[View online »](#)

ORF Nucleotide Sequence:

>RC203698 representing NM_201626
 Red=Cloning site Blue=ORF Green=Tags(s)

TTTTGTAATACGACTCACTATAGGGCGGCCGGAATTCGTCGACTGGATCCGGTACCGAGGAGATCTGCC
 GCC**CGCATCGCC**

ATGACAGGATCAAATTCACACATAACGATATTAACCTTAAAGGTGTTACCTCATTGTTGAAAGTCTTGGGA
 AACAGGAAAAAATTCCTAACAAAATGTCAGCTTTTCGAAATCATTGTCCACATTTGGATTAGTTGGTGA
 AATAACAAAAGAAGATTTGATACAAAAATCCCTTGGTACTTGTACAGGATTGTAAAGTCCAAGGACCAAAAT
 CTTTGGGCATGTCTGGAGAATAGATGTTTCATATGTTGGCTGTGGTGAATCACAAGTAGATCACAGCACCA
 TACATTCTCAGGAGACAAAGCATTATCTAACTGTGAACCTTACCCTCTTCGAGTATGGTGTATGCTTG
 CAGCAAAGAAGTATTTTTGGATAGGAAATTAGGAACTCAGCCTTCATTGCCTCATGTAAGACAACCTCAC
 CAAATACAAGAAAACAGTGTCCAGGATTTAAAAATACCCAGTAATACAACATTA AAAACTCCTCTGGTTG
 CCGTATTTGATGATCTGGATATAGAAGCGGATGAAGAAGTGAACCTTAGGCCAGAGGTCTTACAGGTTT
 GAAAAATATTGGAATACTTGTACATGAATGCAGCTTTGCAGGCTCTTTCTAATTGCCACCTTTGACA
 CAGTTTTTTCTTGATTGTGGAGGACTAGCTCGAACAGATAAGAAAACCTGCCATTTGTAAAAGTTATCTCA
 AACTAATGACAGAGCTGTGGCATAAAAAGCAGGCCAGGATCTGTTGTGCCTACTACTCTGTTTCAAGGAAT
 TAAAACGTAAATCCAACATTTCCGGGGTATTCTCAGCAGGATGCTCAAGAATTCCTTCGATGTTTAAATG
 GATTTGCTTCATGAAGAATTGAAAGAGCAAGTCATGGAAGTAGAAGAAGATCCGCAAACCATAACCACTG
 AGGAGACAATGGAAGAAGACAAGAGCCAGTCGGATGTAGATTTTCAGTCTTGTGAATCTTGTAGCAACAG
 TGATAGAGCAGAAAAATGAAAATGGCTCTAGATGCTTTTCTGAAGATAATAATGAAACAACAAATGTTAATT
 CAGGATGATGAAAACAATTCAGAAATGTCAAAGGATTGGCAAAAAGAGAAGATGTGCAATAAGATTAATA
 AAGTAAATCTGAAGGCGAATTTGATAAAGATAGAGACTCTATATCTGAAACAGTCGACTTAAACAACCA
 GGAAACTGTCAAAGTGCAAATACACAGCAGAGCTTCAGAATATATCACTGATGTCCATTCGAATGACCTG
 TCTACACCACAGATCCTTCCATCAAATGAAGGTGTTAATCCACGTTTATCGGCAAGCCCTCCTAAATCAG
 GCAATTTGTGGCCAGGATTGGCACCACCACAAAAAAGCTCAGTCTGCATCTCCAAAGAGAAAAAACA
 GCACAAGAAATACAGAAGTGTTATTTTCAGACATATTTGATGGAACAATCATTAGTTTCAGTGCAGTGTCTG
 ACTTGTGACAGGGTGTCTGTAACCCTCGAGACCTTTCAAGATCTGTCCTTGCCAATTCCTGGCAAGGAAG
 ACCTTGCTAAGCTGCATTATCAAGTCATCCAACCTCTATAGTCAAAGCAGGATCATGTGGCGAAGCATA
 TGCTCCACAAGGGTGGATAGCTTTTTTCATGGAATATGTGAAGAGCTGGTTTTGGGGTCCAGTAGTAACC
 TTGCAAGATTGTCTTGCTGCCTTTTGGCAGAGATGAACTAAAAGGTGACAATATGTACAGTTGTGAAA
 AATGCAAAAAGTTGAGAAATGGAGTGAAGTTTTGTAAAGTACAAAACCTTCTCTGAGATTTTGTGCATCCA
 CCTTAAAAGATTCAGACATGAACTAATGTTTTCCACAAAATCAGTACCCATGTTTCATTTCCGCTAGAA
 GGCTTGGATCTTCAGCCATTTCTTGCTAAGGATAGTCCAGCTCAAATTTGTGACATATGATCTTCTGTGAG
 TCATTTGCCATCATGAACTGCAAGTAGTGGACTATATAGCCTACTGCCGAAACAATCTAAATAATCT
 CTGGTATGAATTTGATGATCAGAGTGTCACTGAAGTTTCAGAATCTACTGTACAAAATGCAGAAGCTTAC
 GTTCTTTTCTATAGGAAGAGCAGCGAAGAGGCACAAAAAGAGAGGAGAAGGATATCAAATTTATTGAACA
 TAATGGAACCAAGCCTCCTTCAGTTTTATTTTCTCGACAGTGGCTTAATAAATTTAAGACCTTTGCCGA
 ACCTGGCCCTATTTCAAATAATGACTTTCTTTGTATTTCATGGAGGTGTTCTCCAAGAAAAGCTGGTTAT
 ATTTGAAGACCTGGTTTTGATGCTGCCTCAGAACATTTGGGATAACCTATATAGCAGGTATGGTGGAGGAC
 CAGCTGTCAACCATCTGTACATTTGTCATACTTGCCAAATGAGGCGGAGAAAATTTGAAAAAGAAGAAA
 AACTGAATTGAAATTTTTATTCCGGTAAAAAAG

ACGCGTACGCGGCCGCTCGAGCAGAAACTCATCTCAGAAGAGGATCTGGCAGCAATGATATCCTGGATT
 ACAAGGATGACGACGATAAGGTTTAA

Protein Sequence: >RC203698 representing NM_201626
 Red=Cloning site Green=Tags(s)

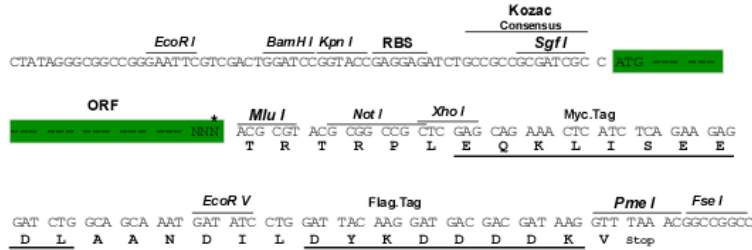
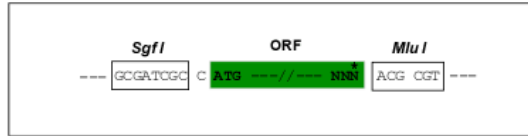
MTGSNSHITILTLKVLPHFESLGKQEKIPNKMSAFRNHCPHLDSVGEITKEDLIQKSLGTCQDCKVQGPN
 LWACLENRCSYVGCESQVDHSTIHSQETKHYLTVNLTTLRVWCYACSKVFLDRKLGTPSLPHVRQPH
 QIQENSVDQFKIPSNNTTLKTPLVAVFDDLDIEADEEDELRRAGLTGLKNIGNTCYMNAALQALSNCPLT
 QFFLDCGGLARTDKKPAICKSYLKLMTLWHSRPGSVVPTTLFQGIKTVNPTFRGYSQQDAQEFLRCLM
 DLLHEELKEQVMEVEEDPQTITTEETMEEDKSQSDVDFQSCESCNSDRAENENGSRCFSEDNNETTMLI
 QDDENNSEMSKDWQKEKMCNKINKVNSEGEFDDKDRDSISETVDLNNQETVKVQIHSRASEYITDVHSNDL
 STPQILPSNEGVNPRLSASPPKSGNLWGLAPPHKKAQSASPKRKKQHKKYRSVISDIFDGTIISVQCL
 TCDRVSVTLETFQDLSLPIPGKEDLAKLHSSSHPTSIVKAGSCGEAYAPQGWIAFFMEYVKSFWGVPVVT
 LQDCLAFFARDELKGDNMYSCEKCKKLRNGVKFCKVQNFPEILCIHLKRFRHELMFSTKISTHVSFPLE
 GLDLQPFLAKDSPAQIVTYDLLSVICHHGTAASSGHYIAYCRNLLNLLWYEFDDQSVTEVSESTVQNAEAY
 VLFYRKSSEEAQKERRRISNLLNIMEPSLLQFYISRQWLNKFKTFAEPGPISNNDFLCIHGGVPPRKAGY
 IEDLVLMPLQNIWDNLYSRYGGPAVNHLIYICHTCQIEAEKIEKRRKTELEIFIRVKK

TRTRPLEQKLI SEEDLAANDILDYKDDDDKV

Restriction Sites: Sgfl-MluI

Cloning Scheme:

Cloning sites used for ORF Shuttling:



* The last codon before the Stop codon of the ORF

ACCN: NM_201626

ORF Size: 2484 bp

OTI Disclaimer: The molecular sequence of this clone aligns with the gene accession number as a point of reference only. However, individual transcript sequences of the same gene can differ through naturally occurring variations (e.g. polymorphisms), each with its own valid existence. This clone is substantially in agreement with the reference, but a complete review of all prevailing variants is recommended prior to use. [More info](#)
OTI Annotation: This clone was engineered to express the complete ORF with an expression tag. Expression varies depending on the nature of the gene.

Components: The ORF clone is ion-exchange column purified and shipped in a 2D barcoded Matrix tube containing 10ug of transfection-ready, dried plasmid DNA (reconstitute with 100 ul of water).

Reconstitution Method:

1. Centrifuge at 5,000xg for 5min.
2. Carefully open the tube and add 100ul of sterile water to dissolve the DNA.
3. Close the tube and incubate for 10 minutes at room temperature.
4. Briefly vortex the tube and then do a quick spin (less than 5000xg) to concentrate the liquid at the bottom.
5. Store the suspended plasmid at -20°C. The DNA is stable for at least one year from date of shipping when stored at -20°C.

RefSeq: [NM_201626.3](#)

RefSeq Size: 2956 bp

RefSeq ORF: 2487 bp

Locus ID: 23032

UniProt ID: [Q8TEY7](#)

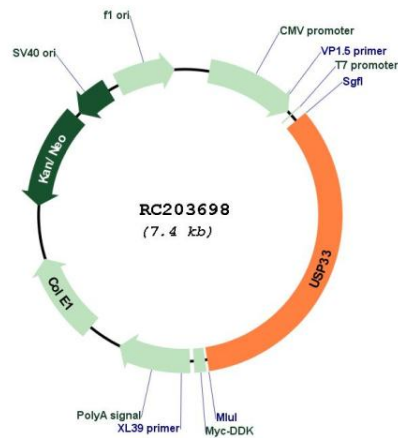
Cytogenetics: 1p31.1

Protein Families: Druggable Genome, Protease

MW: 94 kDa

Gene Summary: This gene encodes a deubiquinating enzyme important in a variety of processes, including Slit-dependent cell migration and beta-2 adrenergic receptor signaling. The protein is negatively regulated through ubiquitination by von Hippel-Lindau tumor protein (VHL). Alternative splicing results in multiple transcript variants and protein isoforms. [provided by RefSeq, Jun 2012]

Product images:



Circular map for RC203698