

Product datasheet for **RC203684**

CCDC90A (MCUR1) (NM_001031713) Human Tagged ORF Clone

Product data:

Product Type:	Expression Plasmids
Product Name:	CCDC90A (MCUR1) (NM_001031713) Human Tagged ORF Clone
Tag:	Myc-DDK
Symbol:	CCDC90A
Synonyms:	C6orf79; CCDC90A; FMP32
Mammalian Cell Selection:	Neomycin
Vector:	pCMV6-Entry (PS100001)
E. coli Selection:	Kanamycin (25 ug/mL)
ORF Nucleotide Sequence:	>RC203684 ORF sequence Red=Cloning site Blue=ORF Green=Tags(s)

TTTTGTAATACGACTCACTATAGGGCGGCCGGGAATTCGTCGACTGGATCCGGTACCGAGGAGATCTGCC
GCC**CGATCGC**C

ATGGACTCGGGCTCGGTGGGGCCAGAGGACCCAGCGCCTGCCCGGCCAGCGGTTCTCTTTGTC
CCGTGGGCTCAGCGGAAGACCGGGCGGCAGCAAACCTCAGCACGCCGCTGCCTCTCTGCGCTCCGA
CGGTCTGGGGCGCTGCGCCCTCGGCCCCGGCGCCCGGGCGGCGTGTACGTGCCTCACCGCTGCTC
CTCTCTGCTAGTGCCTCCCCGCTTGGCCCGCAGCCCCGCGCCGCGAGCTCGGGACTGGGAGC
GCTCGCGCTCGGGTATGCCGACCCCCGGCGCGCAGCAGCGGTGGAGGTGCTCACCGGGCGTCGC
CGCTGCCCGCGGCCCTTCCCCAGTACCACGGCCCGGCCCTGCACTCGTTTCTGCAGGAGAGAGCTA
AGCTTGTCTGCTGGATCCCTGCAGCTGGAGCGAAAAGGAGAGATTTACCTCTTCTGGGAGCAGGAAAC
TCTACTTCGACTCATGCCTTAGTGTGCTTACTGGAAGACAATGGGTTTGTACTCAACAAGCAGAAAT
CATTGTGTCTGCATTGGTCAAGATCCTGGAGGCCAACAATGGACATCGTCTACAAAGATATGGTCACCAAG
ATGCAGCAGGAAATCACTTTTCAGCAAGTAATGTCTCAGATTGCGAATGTGAAAAAGGATATGATTATTT
TGGAGAAGAGTGAATTTTCAGCCCTCAGAGCAGAAAATGAGAAAATAAACTCGAACTACATCAGTTAAA
ACAACAAGTAATGGATGAAGTATCAAAGTCCGAACAGATACCAAATTAGACTTCAACCTAGAAAAGAGC
AGAGTAAAAGAATTGTATTCAATTGAACGAAAAGAAGCTGCTGGAATTGAGAACAGAAAATAGTGCCATTGC
ATGCCAGCAAGATCGGGCCCTTACCCAGACAGACAGGAAGATCGAAACTGAGGTTGCTGGCCTCAAAC
CATGCTTGAGTCACAAAGCTTGATAATATTAATATTTAGCAGGGTCTATATTTACGTGCCTAACAGTA
GCTCTGGGATTTATCGCTGTGGATC

ACGCGTACGCGGCCGCTCGAGCAGAAAACCTCATCTCAGAAGAGGATCTGGCAGCAAATGATATCCTGGATT
ACAAGGATGACGACGATAAGGTTTAA



[View online »](#)

Protein Sequence: >RC203684 protein sequence
 Red=Cloning site Green=Tags(s)

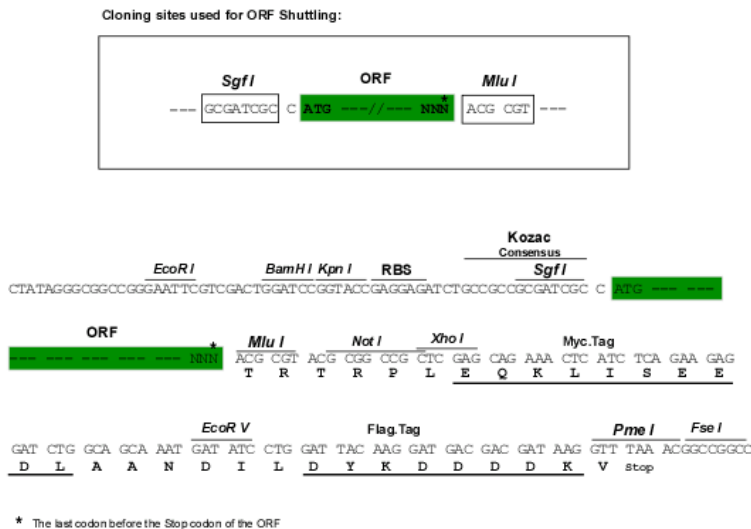
MDCGSVGQRTQRLPGRQRLFLPVGLSGRPGGSETsARRCLSALSDGLGALRPRAPAARGGVSRASPLL
 LLLLVPSPRLAAAAPRRQLGDWERSRLGYAAPPAGRSSAWRCPGVAAAAGALPQYHGPAPALVSCRREL
 SLSAGSLQLERKRRDFTSSGSRKLYFDTHALVCLLEDNGFATQQAEEIVSALVKILEANMDIVYKDMVTK
 MQQEITFQQVMSQIANVKKDMIILEKSEFSALRAENEKIKLELHQLKQQVMDEVIKVRTDKLDFNLEKS
 RVKELYSLNKKLLELRTEIVALHAQQDRALQTDRKIETEVAGLKTMLSESKLDNIKYLAGSIFTCCLTV
 ALGFYRLWI

TRTRPLEQKLISEEDLAANDILDYKDDDDKV

Chromatograms: https://cdn.origene.com/chromatograms/mk6753_h07.zip

Restriction Sites: SgfI-MluI

Cloning Scheme:



* The last codon before the Stop codon of the ORF

ACCN: NM_001031713

ORF Size: 1077 bp

OTI Disclaimer: The molecular sequence of this clone aligns with the gene accession number as a point of reference only. However, individual transcript sequences of the same gene can differ through naturally occurring variations (e.g. polymorphisms), each with its own valid existence. This clone is substantially in agreement with the reference, but a complete review of all prevailing variants is recommended prior to use. [More info](#)

OTI Annotation: This clone was engineered to express the complete ORF with an expression tag. Expression varies depending on the nature of the gene.

Components: The ORF clone is ion-exchange column purified and shipped in a 2D barcoded Matrix tube containing 10ug of transfection-ready, dried plasmid DNA (reconstitute with 100 ul of water).

Reconstitution Method:

1. Centrifuge at 5,000xg for 5min.
2. Carefully open the tube and add 100ul of sterile water to dissolve the DNA.
3. Close the tube and incubate for 10 minutes at room temperature.
4. Briefly vortex the tube and then do a quick spin (less than 5000xg) to concentrate the liquid at the bottom.
5. Store the suspended plasmid at -20°C. The DNA is stable for at least one year from date of shipping when stored at -20°C.

RefSeq: [NM_001031713.3](#), [NP_001026883.1](#)

RefSeq Size: 5472 bp

RefSeq ORF: 1080 bp

Locus ID: 63933

UniProt ID: [Q96AQ8](#)

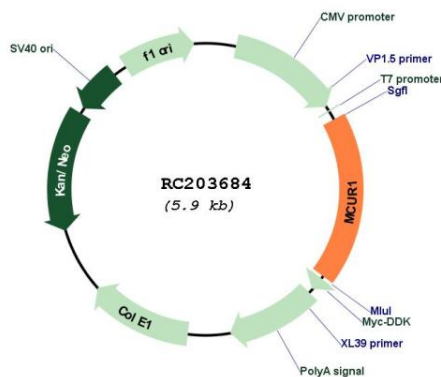
Cytogenetics: 6p23

Protein Families: Transmembrane

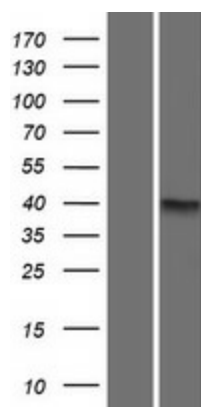
MW: 39.7 kDa

Gene Summary: Key regulator of mitochondrial calcium uniporter (MCU) required for calcium entry into mitochondrion (PubMed:23178883, PubMed:26445506, PubMed:27184846, PubMed:26976564). Plays a direct role in uniporter-mediated calcium uptake via a direct interaction with MCU (PubMed:23178883). Probably involved in the assembly of the membrane components of the uniporter complex (uniplex) (PubMed:27184846). [UniProtKB/Swiss-Prot Function]

Product images:



Circular map for RC203684



Western blot validation of overexpression lysate (Cat# [LY422164]) using anti-DDK antibody (Cat# [TA50011-100]). Left: Cell lysates from untransfected HEK293T cells; Right: Cell lysates from HEK293T cells transfected with RC203684 using transfection reagent MegaTran 2.0 (Cat# [TT210002]).