

Product datasheet for **RC203681**

GRAMD2B (NM_023927) Human Tagged ORF Clone

Product data:

Product Type:	Expression Plasmids
Product Name:	GRAMD2B (NM_023927) Human Tagged ORF Clone
Tag:	Myc-DDK
Symbol:	GRAMD2B
Synonyms:	GRAMD3; NS3TP2
Mammalian Cell Selection:	Neomycin
Vector:	pCMV6-Entry (PS100001)
E. coli Selection:	Kanamycin (25 ug/mL)



[View online »](#)

ORF Nucleotide Sequence:

>RC203681 ORF sequence
 Red=Cloning site Blue=ORF Green=Tags(s)

TTTTGTAATACGACTCACTATAGGGCGGCCGGAATTCGTCGACTGGATCCGGTACCGAGGAGATCTGCC
 GCC**CGGATCGCC**

ATGACTGAACTACAGCAAGATGTGGAAGACACAAAGCCTGCGAAAGTGCTCGGGAAGAGGGAGAGCAAAC
 TTGGCTCAGCCCACTCAGAGGCTGAGAATGGTGTGGAGGAGAAAAAGAAAGCCTGCAGGTCGCCAACAGC
 CCAATCCCTACCCATCTGTGGAGGCGGACTCCCCAGACCAGAAGAAAATCATTAGCCTATGGTCAAAA
 TCCAGTTTTGATGGTGCCTCTTTAGCAAGTGATAAGAACGACTGTAAAACAGAAAGCAAAAATGACCCTA
 AGACTGAAAGAAAAAGTCTTCACTTCCAGCCAGTACAAGGCAATATGCACTTTCACAAGTTGTTTTCT
 TAGTGTCCCAACGGAGGAACCACTGAAGCAAAGCTTTACCTGTGCTCTACAGAAAGAAATACTATACCAA
 GGAAGCTCTTTGTATCAGAAAAGTGGATTTGTTTTTCATCCAAAGTCTTTGGAAAGACACAAAGATCT
 CTATTCCAGCTTCTCGGTAACCCTAATAAAGAAAACAAAAGTCTTCTAGTGCCAAACGCCCTGAT
 CATAGCAACAGTCACAGACAGGTACATATTTGTCTCCTTACTCTCCAGAGATTCAACTTACAACTACTA
 AAATCTGTGTGTGGACACTTAGAAAATACAAGTGTGGTAAACAGTCCCAATCCATCTTCTGCTGAAAACA
 GTTTCCGAGCAGACCCGCTTCTCTCTGCCTCTGGATTTCAATGATGAATTCTCAGATCTGGATGGAGT
 GGTTCACAAAGAAGGCAAGACATGGAAGGATATAGCAGTTCTGGTTCTCAAACCTCTGAATCTGAGAAC
 TCTCGAGATTTCCATGCGACAGAATCCCAAACAGTTCTGAATGTCTCAAAGGAGAAGCAAAGCCAACTC
 GGCAGATGCCCATGTGAACAGAGTACCTGAAGGAAAAGCCAAGAGTCTCCCTGTACAGGGTCTGTCAGA
 AACTGTTGGAATCTTACATAAAGTCAAGTCTCAGAAATGCCGATGCTTACCATATTCTTATATTCTAT
 GCAATTGTTGTCTGTGCACTAATCATCTCGACCTTCTACATGAGATACAGAATTAATACTCTGGAGGAGC
 AGCTGGGGTTACTAACCTCCATTGTGGACACCCATAAATACTGAACAGGCAGCACCATCTGGCCTGAGGTC
 ACAAGTACAATCAATGTGGAGGTTCTCTGTCAAGAGCTTACAGCTAACATAGTGAATAGAAAAGATA
 CAAAATAACTTACAGAAGTTGCTTGAGAATGGTGAC

ACGCGTACGCGGCCGCTCGAGCAGAACTCATCTCAGAAGAGGATCTGGCAGCAAATGATATCCTGGATT
 ACAAGGATGACGACGATAAGGTTTAA

Protein Sequence:

>RC203681 protein sequence
 Red=Cloning site Green=Tags(s)

MTELQQDVEDTKPAKVLGKRESKLGSAHSEAENGVEEKKKACRSPTAQSPTPSVEADSPDQKKIISLWSK
 SSFDGASLASDKNCKTESKNPKTERKKSSSSQYKANMHFKLFLSVPTEPLKQSFTCALQKEILYQ
 GKLFVSENWICFHSKVFVKDTKISIPAFSVTLIKKTKTALLVPNALIIATVTDRIYIFVSLLSRDSTYKLL
 KSVCGHLENTSVGNPNPSSAENSFRADRPSSLPLDFNDEFSDLDGVVQRRQDMEGYSSSGSQTPESN
 SRDFHATESQTVLNVSKGEAKPTRADAHVNRVPEGKAKSLPVQGLSETVGILHKVKSQKCPMLHHILIFY
 AIVVCALIIISTFYMYRIRINTLEEQLGLLTSIVDTHNTEQAAPSGLRSQVQFNVEVLCQELTANIVKLEKI
 QNNLQKLENGD

TRTRPLEQKLISEEDLAANDILDYKDDDDKV

Chromatograms:

https://cdn.origene.com/chromatograms/mk6306_d01.zip

Restriction Sites:

Sgfl-Mlul

Cloning Scheme:


ACCN: NM_023927

ORF Size: 1296 bp

OTI Disclaimer: The molecular sequence of this clone aligns with the gene accession number as a point of reference only. However, individual transcript sequences of the same gene can differ through naturally occurring variations (e.g. polymorphisms), each with its own valid existence. This clone is substantially in agreement with the reference, but a complete review of all prevailing variants is recommended prior to use. [More info](#)

OTI Annotation: This clone was engineered to express the complete ORF with an expression tag. Expression varies depending on the nature of the gene.

Components: The ORF clone is ion-exchange column purified and shipped in a 2D barcoded Matrix tube containing 10ug of transfection-ready, dried plasmid DNA (reconstitute with 100 ul of water).

- Reconstitution Method:**
1. Centrifuge at 5,000xg for 5min.
 2. Carefully open the tube and add 100ul of sterile water to dissolve the DNA.
 3. Close the tube and incubate for 10 minutes at room temperature.
 4. Briefly vortex the tube and then do a quick spin (less than 5000xg) to concentrate the liquid at the bottom.
 5. Store the suspended plasmid at -20°C. The DNA is stable for at least one year from date of shipping when stored at -20°C.

RefSeq: [NM_023927.4](#)

RefSeq Size: 2934 bp

RefSeq ORF: 1299 bp

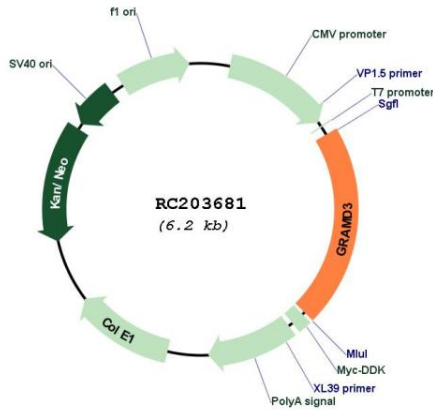
Locus ID: 65983

UniProt ID: [Q96HH9](#)

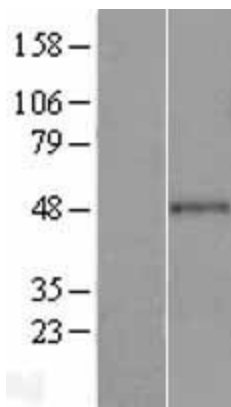
Cytogenetics: 5q23.2

Domains: GRAM
Protein Families: Transmembrane
MW: 47.9 kDa

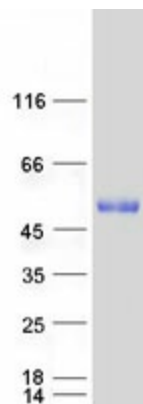
Product images:



Circular map for RC203681



Western blot validation of overexpression lysate (Cat# [LY411432]) using anti-DDK antibody (Cat# [TA50011-100]). Left: Cell lysates from untransfected HEK293T cells; Right: Cell lysates from HEK293T cells transfected with RC203681 using transfection reagent MegaTran 2.0 (Cat# [TT210002]).



Coomassie blue staining of purified GRAMD2B protein (Cat# [TP303681]). The protein was produced from HEK293T cells transfected with GRAMD2B cDNA clone (Cat# RC203681) using MegaTran 2.0 (Cat# [TT210002]).