

Product datasheet for **RC203677**

SLC35F5 (NM_025181) Human Tagged ORF Clone

Product data:

Product Type:	Expression Plasmids
Product Name:	SLC35F5 (NM_025181) Human Tagged ORF Clone
Tag:	Myc-DDK
Symbol:	SLC35F5
Mammalian Cell Selection:	Neomycin
Vector:	pCMV6-Entry (PS100001)
E. coli Selection:	Kanamycin (25 ug/mL)



[View online »](#)

ORF Nucleotide Sequence:

>RC203677 ORF sequence
 Red=Cloning site Blue=ORF Green=Tags(s)

TTTTGTAATACGACTCACTATAGGGCGGCCGGAATTCGTCGACTGGATCCGGTACCGAGGAGATCTGCC
 GCC**GCGATCGCC**

ATGGTGCCGCCACGACGCCATCGCGGGCAGGAAGGCCAGGGGTGCTGAGTTCTTACCTCCTTTTAGAC
 TGAGATCTGCCAAGTTTTCCGGCATTGCTTTGAGGATCTCAGAAGGGCTCTAAGACAAGACTGCAAAAT
 GGTGTGTGATTTTGCATGAACCGAATGAATCCAGAACAGTGGTTTCACTCAGCGCAGCGAATGGCT
 CTTGGGATTGTTATTCTTCTGCTTGTGATGTGATATGGGTTGCTTCTCTGAACCTACTTCGTATGTTT
 TTACCCAGTACAACAAACCATTCTTCAGCACCTTTGCAAAAACATCTATGTTTGTGTTTGTACCTTTGGG
 CTTTATTATTTGGAAGCCATGGAGACAACAGTGTACAAGAGGACTTCGCGGAAAGCATGCTGCTTTTTTT
 GCAGATGCTGAAGGTTACTTTGCTGCTTGACAACAGATACAACATGAATAGTTCTTTGAGTGAACCTC
 TGTATGTGCTGTGAAATCCATGATCTCCAAGTGAAAAACCTGAGAGCACAAACATTGATACTGAAAA
 AACCCCAAAAAGTCTCGTGTGAGGTTGAGTAATCATGGAGATTCGACAGCTCCGTCAAGTCATGCA
 TTGGAAGCAAAGTTGCTCGCATGTCATATCCTGTGAAAGAACAAGAATCCATACTGAAAACCTGTGGGA
 AACTACTGCAACTCAAGTAGCGAAAATTAGCTTTTTTTTTGCTTTGTGTGGTTTTTGGCAAAATTTGTC
 ATATCAAGAAGCACTTTTCCAGACACAAGTTGCTATAGTTAATATTTTATCTTCAACTCCGGACTTTTT
 ACCTTAATCCTTGCTGCAGTATTTCCAAGTAACAGTGGAGATAGATTTACCCTTTCTAACTATTAGCTG
 TAATTTAAGCATTGGAGGCGTTGACTGGTAAACCTGGCAGGGTCTGAAAAACCTGCTGGAAGAGACAC
 AGTAGGTTCCATTTGGTCTCTTGGTGGAGCCATGCTCTATGCTGTCTATATTGTTATGATTAAGAGAAA
 GTAGATAGAGAAGACAAGTTGGATATCCAATGTTCTTTGGTTTTGTAGGTTTGTAACTGCTGCTCT
 TATGGCCAGGTTCTTTTTACTTCAATATACTGGATTGAGGACTTCGAGTTTCCAATAAAGTAGTATT
 AATGTGCATTATCATAAATGGCCTTATTGGAACAGTACTCTCAGAGTTCCGTGGTTGTGGGCTGCTTT
 CTTACCTCATCATTGATAGGCACACTTGCACTAAGCCTTACAATACCTCTGTCCATAATAGCTGACATG
 GTATGCAAAAGGTGCAGTTTTCTTGTTATTTTTGCAGGAGCTATCCCTGTATTTTTTTCATTTTTAT
 TGTAACCTCCTATGCCATTATAATAATTGGGATCCTGTGATGGTGGGAATCAGAAGAATTTTGTCTTT
 ATATGCAGAAAACATCGAATTCAGAGAGTTCCAGAAGACAGCGAACAGTGTGAGAGTCTCATTCTATGC
 ACAGTGTCTCAGGAGGATGGAGCTAGT

ACGCGTACGCGGCCGCTCGAGCAGAAACTCATCTCAGAAGAGGATCTGGCAGCAAATGATATCCTGGATT
 ACAAGGATGACGACGATAAGGTTTAA

Protein Sequence:

>RC203677 protein sequence
 Red=Cloning site Green=Tags(s)

MVPPRRHRGAGRPGVLS SSPFRLRS AKFSGIALEDLRRALKTRLQMVCVFMNRMNSQNSGFTQRRRMA
 LGIVILLVLDVIWVASSELT SYVFTQYNK PFFSTFAKTSMFVLYLLGFIWKPWRQQCTRGLRGKHAFF
 ADAEGYFAACTD TTMNSSLSEPLYVPVKFHDL PSEKPESTNIDTEKTPKKS RVRF SNIMEIRQLPSSHA
 LEAKLSRMSYPVKEQESILKTVGKLTATQAKISFFF CFVWFLANLSYQEALSDTQVAIVNILSSTGLF
 TLILA AVFPSNSGDRFTLSKLLAVILSIGGVLVNLAGSEKPA GRD TVGSIWSLAGAML YAVYIVMIK RK
 VDREKLDIPMFFGVGLFNLLLLWPGFFLLHYTGFEDFEFPNKVVL MCI INGLIGTVLSEFLWLW GCF
 LTSSLIGTLALS LTIPLSIIADMCMQKVQFSWLF FAGAIPVFFSFFIVTLLCHYNNWDPVMVGIRIRIFAF
 ICRKHRIQRVPEDSEQCESLISMHSVSQEDGAS

TRTRPLEQKLI SEEDLAANDILDYKDDDDKV

Chromatograms:

https://cdn.origene.com/chromatograms/mk6196_e12.zip

Restriction Sites:

Sgfl-Mlul

Cloning Scheme:



ACCN: NM_025181

ORF Size: 1569 bp

OTI Disclaimer: The molecular sequence of this clone aligns with the gene accession number as a point of reference only. However, individual transcript sequences of the same gene can differ through naturally occurring variations (e.g. polymorphisms), each with its own valid existence. This clone is substantially in agreement with the reference, but a complete review of all prevailing variants is recommended prior to use. [More info](#)

OTI Annotation: This clone was engineered to express the complete ORF with an expression tag. Expression varies depending on the nature of the gene.

Components: The ORF clone is ion-exchange column purified and shipped in a 2D barcoded Matrix tube containing 10ug of transfection-ready, dried plasmid DNA (reconstitute with 100 ul of water).

- Reconstitution Method:
1. Centrifuge at 5,000xg for 5min.
 2. Carefully open the tube and add 100ul of sterile water to dissolve the DNA.
 3. Close the tube and incubate for 10 minutes at room temperature.
 4. Briefly vortex the tube and then do a quick spin (less than 5000xg) to concentrate the liquid at the bottom.
 5. Store the suspended plasmid at -20°C. The DNA is stable for at least one year from date of shipping when stored at -20°C.

RefSeq: [NM_025181.5](#)

RefSeq Size: 4412 bp

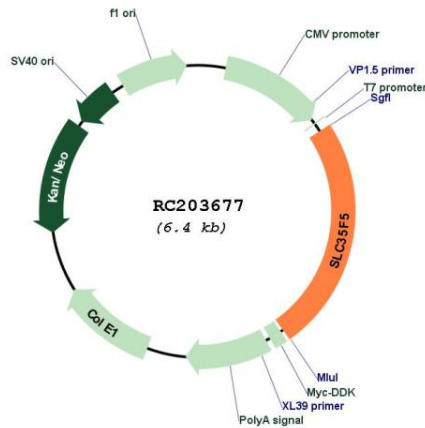
RefSeq ORF: 1572 bp

Locus ID: 80255

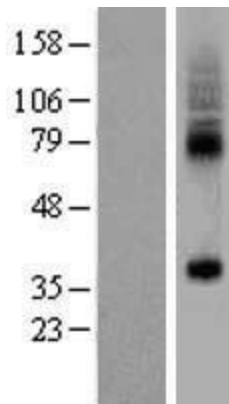
UniProt ID: [Q8WV83](#)

Cytogenetics: 2q14.1
Domains: DUF6
Protein Families: Transmembrane
MW: 58.9 kDa
Gene Summary: Putative solute transporter.[UniProtKB/Swiss-Prot Function]

Product images:



Circular map for RC203677



Western blot validation of overexpression lysate (Cat# [LY403057]) using anti-DDK antibody (Cat# [TA50011-100]). Left: Cell lysates from untransfected HEK293T cells; Right: Cell lysates from HEK293T cells transfected with RC203677 using transfection reagent MegaTran 2.0 (Cat# [TT210002]).