

## Product datasheet for **RC203676**

### FKBP10 (NM\_021939) Human Tagged ORF Clone

#### Product data:

Product Type:	Expression Plasmids
Product Name:	FKBP10 (NM_021939) Human Tagged ORF Clone
Tag:	Myc-DDK
Symbol:	FKBP10
Synonyms:	BRKS1; FKBP65; hFKBP65; OI6; OI11; PPIASE
Mammalian Cell Selection:	Neomycin
Vector:	pCMV6-Entry (PS100001)
E. coli Selection:	Kanamycin (25 ug/mL)



[View online »](#)

**ORF Nucleotide Sequence:**

>RC203676 ORF sequence  
 Red=Cloning site Blue=ORF Green=Tags(s)

TTTTGTAATACGACTCACTATAGGGCGGCCGGGAATTCGTCGACTGGATCCGGTACCGAGGAGATCTGCC  
 GCC**GCGATCGCC**

ATGTTCCCGCGGGCCCCCAGCCACAGCCTCCTCCGGTCCCCCTGCTGCAGTTGCTGCTACTGGTGG  
 TGCAGGCCGTGGGAGGGGGCTGGGCCGCGCCAGCCCGGCCGGGGCCCCCTGGAAGATGTGGTCAATCGA  
 GAGGTACCACATCCCCAGGGCCTGTCCCGGGAAGTGCAGATGGGGGATTTGTGCGCTACCACTACAAC  
 GGCACTTTTGAAGATGGCAAGAAGTTGATTCAAGCTATGATCGCAACACCTTGGTGCCATCGTGGTGG  
 GTGTGGGGCGCCTCATCACTGGCATGGACCGAGGCCTCATGGGCATGTGTGTCAACGAGCGGCGACGCCCT  
 CATTGTGCTCCCCACCTGGGCTATGGGAGCATCGGCCTGGCGGGGCTCATTCCACCGGATGCCACCCTC  
 TACTTCGATGTGGTTCTGCTGGATGTGTGAACAAGGAAGACACCGTGCAGGTGAGCACATTGCTGCGCC  
 CGCCCCACTGCCCCGCATGGTCCAGGACGGCGACTTTGTCCGCTACCACTACAATGGCACCTGCTGGA  
 CGGCACCTCCTTCGACACCAGCTACAGTAAGGGCGGCCTTATGACACCTACGTCGGCTCTGTTGGCTG  
 ATCAAGGCATGGACCAGGGGCTGCTGGGCATGTGTCCTGGAGAGAGAAGGAAGATTATCATCCCTCCAT  
 TCCTGGCCTATGGCGAGAAGGCTATGGGACAGTGATCCCCCACAGGCCTCGTGGTCTTTCACGTCTCT  
 CCTGATTGACGTGCAACCCGAAGGACGCTGTCCAGTAGAGACGCTGGAGTCCCCCCGGCTGTGTC  
 CGCAGAGCCGGGGCCGGGACTTCATGCGCTACCACTACAATGGCTCCTTGATGGACGGCACCTCTTCG  
 ATTCCAGTACTCCCGCAACCACCTACAATACCTATATCGGGCAGGGTTACATCATCCCCGGGATGGA  
 CCAGGGGCTGCAGGTGCCTGCATGGGGAAACGCCGGAAGTACCATCCCCCGCACCTCGCCTATGGG  
 GAGAATGGAAGTGGAGACAAGATCCCTGGCTCTGCCGTGCTAATCTTCAACGTCCATGTCATTGACTTCC  
 ACAACCTGCGGATGTGGTGGAAATCAGGACACTGTCCCGCCATCTGAGACCTGCAATGAGACCACCAA  
 GCTTGGGGACTTTGTTCCGATACCAATACAACCTGTTCTTTGCTGGACGGCACCCAGCTGTTACCTCGCAT  
 GACTACGGGGCCCCCAGGAGGCGACTCTCGGGCCAACAAGGTGATCGAAGGCCTGGACACGGGCTGTC  
 AGGGCATGTGTGTGGGAGAGAGCGGCAGCTCATCGTCCCCCGCACCTGGCCACGGGAGAGTGGAGC  
 CCGGGGAGTCCCAGGCGAGTGTGTGCTGCTGTTTGAAGTGGAGCTGGTGTCCCGGAGGATGGGCTGCC  
 ACAGGCTACCTGTTTGTGTGGCACAAGGACCTCCTGCCAACCTGTTTGAAGACATGGACCTCAACAAGG  
 ATGGCGAGGTCCCTCCGAGGAGTCTCCACCTCATCAAGGCTCAAGTGAAGTGGAGGCAAAGGACGCCCT  
 CATGCTGGGCAGGACCCTGAGAAAACCATAGGAGACATGTTCCAGAACCAGGACCGCAACCAGGACGGC  
 AAGATCACAGTCGACGAGCTCAAGCTGAAGTCAGATGAGGACGAGGAGCGGGTCCACGAGGAGCT

**ACGCGT**ACGCGGGCCGCTCGAGCAGAAACTCATCTCAGAAGAGGATCTGGCAGCAAATGATATCCTGGATT  
 ACAAGGATGACGACGATAAGGTTTAA

**Protein Sequence:**

>RC203676 protein sequence  
 Red=Cloning site Green=Tags(s)

MFPAGPPSHLLRLPLLQLLLL VVQAVGRGLGRASPAGGPLEDVVIERYHIPRACPREVQMGDFVRYHYN  
 GTFEDGKFDSSYDRNTLVAIVVGVGRLITGMDRGLMGMCVNERRRLIVPPHLGYGSIAGLIPPDATL  
 YFDVLLDVWNKEDTVQVSTLLRPPHCPRMVQDGFVRYHYNGTLLDGTSFDTYSKGGTYDYYVSGWL  
 IKGMDQGLLGMPGERRKIIIPFLAYGEKGYGTVIPPQASLVFHVLLIDVHNPKDAVQLELLEPPGCV  
 RRAGAGDFMRYHYNGSLMDGTLFDSSYSRNHTYNTYIGQGYIIPGMDQGLQGACMGERRRITIPPHLAYG  
 ENGTGDKIPGSAVLI FNVHVIDFHNPADVVEIRTL SRPSETCNETTKLGDFVRYHYNCSLLDGTQLFTSH  
 DYGAPEATLGANKVIEGLDTGLQGMCVGERRQLIVPPHLAHGESGARGVPGSAVLLFEVELVSREDGLP  
 TGYL FVWHKDPANL FEDMDLNKDGEVPEEFSTFIKAQVSEGKGRMLMPGQDPEKTI GDMFQNDQRNQDQ  
 KITVDELKLSDEDEERVHEEL

**TR**TRPLEQKLISEEDLAANDILDYKDDDDKV

**Chromatograms:**

[https://cdn.origene.com/chromatograms/mk6245\\_a09.zip](https://cdn.origene.com/chromatograms/mk6245_a09.zip)

**Restriction Sites:**

Sgfl-Mlul

**Cloning Scheme:**


**ACCN:** NM\_021939

**ORF Size:** 1746 bp

**OTI Disclaimer:** The molecular sequence of this clone aligns with the gene accession number as a point of reference only. However, individual transcript sequences of the same gene can differ through naturally occurring variations (e.g. polymorphisms), each with its own valid existence. This clone is substantially in agreement with the reference, but a complete review of all prevailing variants is recommended prior to use. [More info](#)

**OTI Annotation:** This clone was engineered to express the complete ORF with an expression tag. Expression varies depending on the nature of the gene.

**Components:** The ORF clone is ion-exchange column purified and shipped in a 2D barcoded Matrix tube containing 10ug of transfection-ready, dried plasmid DNA (reconstitute with 100 ul of water).

- Reconstitution Method:**
1. Centrifuge at 5,000xg for 5min.
  2. Carefully open the tube and add 100ul of sterile water to dissolve the DNA.
  3. Close the tube and incubate for 10 minutes at room temperature.
  4. Briefly vortex the tube and then do a quick spin (less than 5000xg) to concentrate the liquid at the bottom.
  5. Store the suspended plasmid at -20°C. The DNA is stable for at least one year from date of shipping when stored at -20°C.

**Note:** Plasmids are not sterile. For experiments where strict sterility is required, filtration with 0.22um filter is required.

**RefSeq:** [NM\\_021939.4](#)

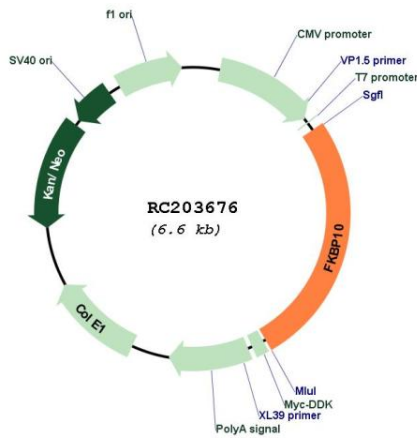
**RefSeq Size:** 2888 bp

**RefSeq ORF:** 1749 bp

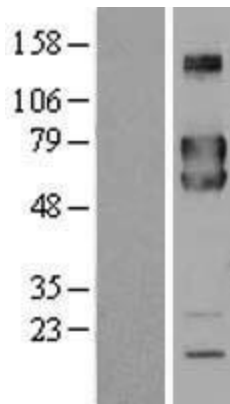
**Locus ID:** 60681

**UniProt ID:** [Q96AY3](#)  
**Cytogenetics:** 17q21.2  
**Protein Families:** Druggable Genome  
**MW:** 64.2 kDa  
**Gene Summary:** The protein encoded by this gene belongs to the FKBP-type peptidyl-prolyl cis/trans isomerase (PPIase) family. This protein localizes to the endoplasmic reticulum and acts as a molecular chaperone. Alternatively spliced variants encoding different isoforms have been reported, but their biological validity has not been determined.[provided by RefSeq, Nov 2009]

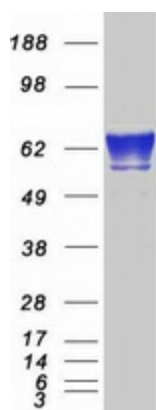
**Product images:**



Circular map for RC203676



Western blot validation of overexpression lysate (Cat# [LY411871]) using anti-DDK antibody (Cat# [TA50011-100]). Left: Cell lysates from untransfected HEK293T cells; Right: Cell lysates from HEK293T cells transfected with RC203676 using transfection reagent MegaTran 2.0 (Cat# [TT210002]).



Coomassie blue staining of purified FKBP10 protein (Cat# [TP303676]). The protein was produced from HEK293T cells transfected with FKBP10 cDNA clone (Cat# RC203676) using MegaTran 2.0 (Cat# [TT210002]).