

Product datasheet for RC203673

SPSB1 (NM_025106) Human Tagged ORF Clone

Product data:

Product Type:	Expression Plasmids
Product Name:	SPSB1 (NM_025106) Human Tagged ORF Clone
Tag:	Myc-DDK
Symbol:	SPSB1
Synonyms:	SSB-1; SSB1
Mammalian Cell Selection:	Neomycin
Vector:	pCMV6-Entry (PS100001)
E. coli Selection:	Kanamycin (25 ug/mL)
ORF Nucleotide Sequence:	>RC203673 ORF sequence Red=Cloning site Blue=ORF Green=Tags(s)

TTTTGTAATACGACTCACTATAGGGCGCCGGGAATTCGTCGACTGGATCCGGTACCGAGGAGATCTGCC
GCC**CGATCGCC**

ATGGGTCAGAAGGTCCTGGAGGGATCAAGACTGTGGACATGAGGGACCCACGTACAGGCCCTGAAGC
AGGAGCTCCAGGGTCTGGATTACTGCAAGCCCACCCGGCTGGATCTGCTACTGGACATGCCCCCTGTGTC
CTATGATGTCCAGCTGCTGCATTCATGGAACAACAACGACCGATCGCTCAATGTCTTTGTAAGGAGGAC
GACAAGCTCATCTTCCACCGCATCCGGTGGCCAGAGCACGGACGCTATCAGGGGCAAAGTCGGGTATA
CCCGTGGGCTGCACGTGTGGCAGATCACGTGGCCATGAGACAGCGGGGCACACACGCCGTGGTGGGGT
GGCAGCGGACAGACGCCCCCTGCACTCTGTCCGGTACACAACCCTCGTGGGAATAACCACGAGTCTGG
GGCTGGGACTTGGGGCGCAACCGCTCTACCACGATGGCAAGAACCAGCCAAGCAAAACATACCCAGCCT
TTCTGGAACCAGATGAGACATTCATTGTCCCTGACTCCTTCTGGTAGCCCTGGACATGGACGACGGGAC
TCTGAGCTTCATTGTGGATGGACAGTACATGGGAGTGGCTTTTCGGGGACTCAAGGGCAAAAACTGTAT
CCTGTAGTGAGTGCCGCTCTGGGGCACTGTGAGATCCGAATGCGCTACTTGAACGGACTCGATCCCGAGC
CGCTGCCGCTCATGGATTGTGCCGTCGCTCGGTGCGCCTGGCCCTGGGGAGGGAGCGCCTGGGGGAGAT
CCACACGCTGCCGCTGCCGGCTCCCTCAAGGCCTACCTCCTCTACCAG

ACGCGTACGCGGCCGCTCGAGCAGAACTCATCTCAGAAGAGGATCTGGCAGCAAATGATATCCTGGATT
ACAAGGATGACGACGATAAGGTTTAA



[View online »](#)

Protein Sequence: >RC203673 protein sequence
 Red=Cloning site Green=Tags(s)

MGQKVTGGIKTVDMRDPTYRPLKQELQGLDYCKPTRLDLLDMPPVSYDVQLLSWNNDRSLNVFVKED
 DKLI FHRHPVAQSTDAIRGKVG YTRGLHWQITWAMRQRGTHAVVGVATADAPLHSVGYTTLVGNNHESW
 GWDLGRNRLYHDGKNQPSKTYPAFLPEDETFIVPDSFLVALDMDGTL SFIVDGGQYMGVAFRGLKGGKKLY
 PVVSAVWGHC EIRMYRLNGLDPEPLPLMDLCRRSVRLALGRERLGEIHTLPLPASLKAYLLYQ

TRTRPLEQKLISEEDLAANDILDYKDDDDKV

Chromatograms: https://cdn.origene.com/chromatograms/mk6307_h01.zip

Restriction Sites: SgfI-MluI

Cloning Scheme:



ACCN: NM_025106

ORF Size: 819 bp

OTI Disclaimer: The molecular sequence of this clone aligns with the gene accession number as a point of reference only. However, individual transcript sequences of the same gene can differ through naturally occurring variations (e.g. polymorphisms), each with its own valid existence. This clone is substantially in agreement with the reference, but a complete review of all prevailing variants is recommended prior to use. [More info](#)

OTI Annotation: This clone was engineered to express the complete ORF with an expression tag. Expression varies depending on the nature of the gene.

Components: The ORF clone is ion-exchange column purified and shipped in a 2D barcoded Matrix tube containing 10ug of transfection-ready, dried plasmid DNA (reconstitute with 100 ul of water).

Reconstitution Method:

1. Centrifuge at 5,000xg for 5min.
2. Carefully open the tube and add 100ul of sterile water to dissolve the DNA.
3. Close the tube and incubate for 10 minutes at room temperature.
4. Briefly vortex the tube and then do a quick spin (less than 5000xg) to concentrate the liquid at the bottom.
5. Store the suspended plasmid at -20°C. The DNA is stable for at least one year from date of shipping when stored at -20°C.

RefSeq: [NM_025106.4](#)

RefSeq Size: 3130 bp

RefSeq ORF: 822 bp

Locus ID: 80176

UniProt ID: [Q96BD6](#)

Cytogenetics: 1p36.22

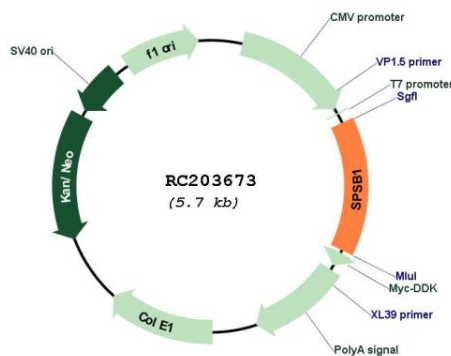
Domains: SPRY

Protein Families: Druggable Genome

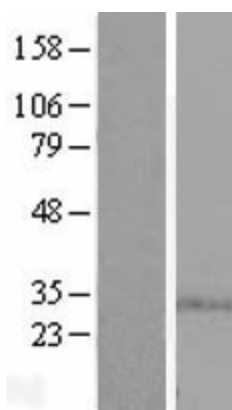
MW: 30.9 kDa

Gene Summary: Substrate recognition component of a SCF-like ECS (Elongin BC-CUL2/5-SOCS-box protein) E3 ubiquitin-protein ligase complex which mediates the ubiquitination and subsequent proteasomal degradation of target proteins (PubMed:15601820, PubMed:21199876). Negatively regulates nitric oxide (NO) production and limits cellular toxicity in activated macrophages by mediating the ubiquitination and proteasomal degradation of NOS2 (PubMed:21199876). Acts as a bridge which links NOS2 with the ECS E3 ubiquitin ligase complex components ELOC and CUL5 (PubMed:21199876).[UniProtKB/Swiss-Prot Function]

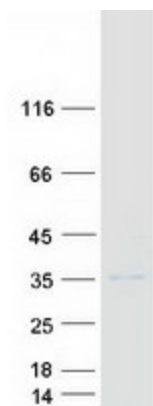
Product images:



Circular map for RC203673



Western blot validation of overexpression lysate (Cat# [LY410888]) using anti-DDK antibody (Cat# [TA50011-100]). Left: Cell lysates from untransfected HEK293T cells; Right: Cell lysates from HEK293T cells transfected with RC203673 using transfection reagent MegaTran 2.0 (Cat# [TT210002]).



Coomassie blue staining of purified SPSB1 protein (Cat# [TP303673]). The protein was produced from HEK293T cells transfected with SPSB1 cDNA clone (Cat# RC203673) using MegaTran 2.0 (Cat# [TT210002]).