

Product datasheet for **RC203672**

NABP1 (NM_001031716) Human Tagged ORF Clone

Product data:

Product Type: Expression Plasmids
Product Name: NABP1 (NM_001031716) Human Tagged ORF Clone
Tag: Myc-DDK
Symbol: NABP1
Synonyms: OBFC2A; SOSS-B2; SSB2
Mammalian Cell Selection: Neomycin
Vector: pCMV6-Entry (PS100001)
E. coli Selection: Kanamycin (25 ug/mL)
ORF Nucleotide Sequence: >RC203672 ORF sequence
Red=Cloning site Blue=ORF Green=Tags(s)

TTTTGTAATACGACTCACTATAGGGCGGCCGGAATTCGTCGACTGGATCCGGTACCGAGGAGATCTGCC
GCC**CGATCGCC**

ATGAATAGGGTCAACGACCCACTTATTTTTATAAGAGATATTAAGCCGGACTGAAAACTTAAATGTCG
TCTTTATTGTCCTGGAGATAGGACGCGTGACCAAAACCAAGACGGCCATGAAGTGAGATCGTGCAAAGT
AGCAGATAAAACGGGCAGCATCACTATTTCCGTGTGGGATGAGATCGGAGGCTTATACAGCCAGGGGAT
ATTATTCGGTTGACCAGAGGGTATGCATCCATGTGAAAGGATGTCTGACACTTTATACTGGAAGGGGTG
GTGAACCTCAAAAAATTGGGAATTTGTATGGTTTATTCAGAAGTGCCAAATTCAGTGAACCCAACCC
AGATTATCGAGGACAGCAGAACAAGGGGCACAGAGTGAACAGAAGAATAATCCATGAATAGTAATATG
GGTACAGGTACATTTGGACCAAGTGGGAAATGGTGTTCACACTGGCCCTGAATCAAGGGAACACCAAGTTT
CACATGCTGGCAGAAGCAATGGCCGGGGACTTATAAATCCACAACATAAAGGAACAGCTAGTAATCAAAC
AGTGATGACCACAATAAGTAATGGCAGGGACCCTCGGAGAGCCTTTAAAAGA

AG**CGGACCG**ACGCGTACGCGCCGCTCGAGCAGAACTCATCTCAGAAGAGGATCTGGCAGCAAATGATATCC
TGGATTACAAGGATGACGACGATAAGGTTTAA

Protein Sequence: >RC203672 protein sequence
Red=Cloning site Green=Tags(s)

MNRVNDPLIFIRDIKPGLKLNLVFIVLEIGRVTKTKDGHEVRSCKVADKTGSITISVWDEIGGLIQPGD
IIRLTRGYASMWKGLTLYTGRGGELQKIGEFMYYSEVPNFSEPNPDYRGOQNKGAQSEQKNNMNSNM
GTGTFGPVGNVHTGPESREHQF SHAGRSNGRGLINPQLQGTASNQTVMTTISNGRDPRAFKR

SGPTRTRPLEQKLI SEEDLAANDILDYKDDDDKV

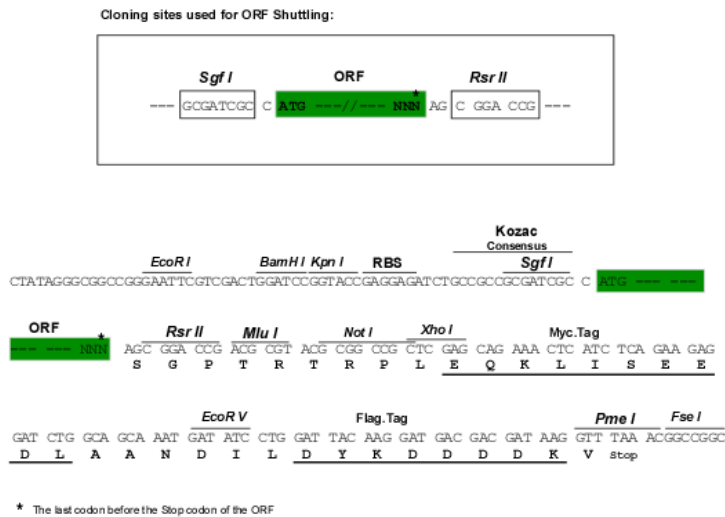


[View online »](#)

Chromatograms: https://cdn.origene.com/chromatograms/mk6615_e04.zip

Restriction Sites: SgfI-RsrII

Cloning Scheme:



ACCN: NM_001031716

ORF Size: 612 bp

OTI Disclaimer: The molecular sequence of this clone aligns with the gene accession number as a point of reference only. However, individual transcript sequences of the same gene can differ through naturally occurring variations (e.g. polymorphisms), each with its own valid existence. This clone is substantially in agreement with the reference, but a complete review of all prevailing variants is recommended prior to use. [More info](#)

OTI Annotation: This clone was engineered to express the complete ORF with an expression tag. Expression varies depending on the nature of the gene.

Components: The ORF clone is ion-exchange column purified and shipped in a 2D barcoded Matrix tube containing 10ug of transfection-ready, dried plasmid DNA (reconstitute with 100 ul of water).

Reconstitution Method:

1. Centrifuge at 5,000xg for 5min.
2. Carefully open the tube and add 100ul of sterile water to dissolve the DNA.
3. Close the tube and incubate for 10 minutes at room temperature.
4. Briefly vortex the tube and then do a quick spin (less than 5000xg) to concentrate the liquid at the bottom.
5. Store the suspended plasmid at -20°C. The DNA is stable for at least one year from date of shipping when stored at -20°C.

RefSeq: [NM_001031716.4](#)

RefSeq Size: 3866 bp

RefSeq ORF: 615 bp

Locus ID: 64859

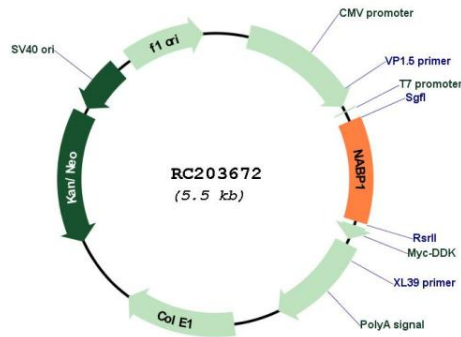
UniProt ID: [Q96AH0](#)

Cytogenetics: 2q32.3

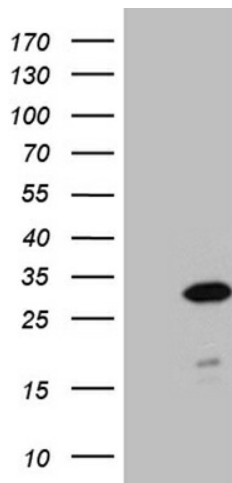
MW: 22.4 kDa

Gene Summary: Single-stranded DNA (ssDNA)-binding proteins, such as OBFC2A, are ubiquitous and essential for a variety of DNA metabolic processes, including replication, recombination, and detection and repair of damage (Richard et al., 2008 [PubMed 18449195]).[supplied by OMIM, Jun 2008]

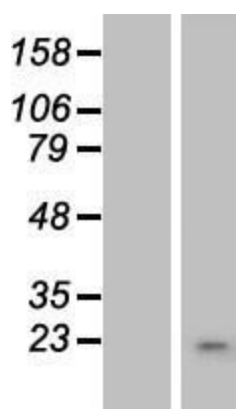
Product images:



Circular map for RC203672



HEK293T cells were transfected with the pCMV6-ENTRY control (Cat# [PS100001], Left lane) or pCMV6-ENTRY NABP1 (Cat# RC203672, Right lane) cDNA for 48 hrs and lysed. Equivalent amounts of cell lysates (5 ug per lane) were separated by SDS-PAGE and immunoblotted with anti-NABP1 (Cat# [TA811088])(1:2000). Positive lysates [LY422167] (100ug) and [LC422167] (20ug) can be purchased separately from OriGene.



Western blot validation of overexpression lysate (Cat# [LY422167]) using anti-DDK antibody (Cat# [TA50011-100]). Left: Cell lysates from untransfected HEK293T cells; Right: Cell lysates from HEK293T cells transfected with RC203672 using transfection reagent MegaTran 2.0 (Cat# [TT210002]).