

## Product datasheet for **RC203665**

### Seryl tRNA synthetase (SARS) (NM\_006513) Human Tagged ORF Clone

#### Product data:

Product Type:	Expression Plasmids
Product Name:	Seryl tRNA synthetase (SARS) (NM_006513) Human Tagged ORF Clone
Tag:	Myc-DDK
Symbol:	Seryl tRNA synthetase
Synonyms:	NEDMAS; SARS; SERRS; SERS
Mammalian Cell Selection:	Neomycin
Vector:	pCMV6-Entry (PS100001)
E. coli Selection:	Kanamycin (25 ug/mL)



[View online »](#)

**ORF Nucleotide Sequence:**

>RC203665 ORF sequence  
 Red=Cloning site Blue=ORF Green=Tags(s)

TTTTGTAATACGACTCACTATAGGGCGGCCGGAATTCGTCGACTGGATCCGGTACCGAGGAGATCTGCC  
 GCC**CGGATCGCC**

ATGGTCTGGATCTGGATTTGTTTCGGGTGGATAAAGGAGGGACCCAGCCCTCATCCGAGAGACGCAGG  
 AGAAGCGCTTCAAGGACCGGGACTAGTGGACCAGCTGGTGAAGGCAGACAGCGAGTGGCGACGATGTAG  
 ATTTCCGGCAGACAACCTGAACAAGCTGAAGAACCTATGCAGCAAGACAATCGGAGAGAAAAAAGAAAA  
 AAAGAGCCAGTGGGAGATGATGAGTCTGTCCAGAGAATGTGCTGAGTTTCGATGACCTTACTGCAGACG  
 CTTTAGCTAACCTGAAAGTCTCACAAAACAAAAAGTCCGACTCCTCATTGATGAAGCCATCCTGAAGTG  
 TGACGCGGAGCGGATAAAGTTGGAAGCAGAGCGGTTTGAACCTCCGAGAGATTGGGAACCTTCTGCAC  
 CCTTCTGTACCCATCAGTAACGATGAGGATGTGGACAACAAGTAGAGAGGATTTGGGGTATTGTACAG  
 TCAGGAAGAAGTACTCTCATGTGGACCTGGTGGTATGGTAGATGGCTTTGAAGGCGAAAAGGGGGCCGT  
 GGTGGCTGGGAGTCGAGGTTACTTCTTGAAGGGGTCCTGGTGTCTCTGGAACAGGCTCTCATCCAGTAT  
 GCCCTTCGCACCTTGGGAAGTCGGGGCTACATTCCTATTATACCCCTTTTTCATGAGGAAGGAGGTCA  
 TGCAGGAGGTGGCACAGCTCAGCCAGTTTGTGTAAGAACCTTATAAGGTATTGGCAAAGGCAGTGAAAA  
 GTCTGATGACAACTCCTATGATGAGAAGTACCTGATTGCCACCTCAGAGCAGCCATTGCTGCCCTGCAC  
 CGGGATGAGTGGCTCCGGCCGGAGGACCTGCCATCAAGTATGCTGGCCTGTCTACCTGCTTCCGTCAGG  
 AGGTGGCTCCCATGGCCGTGACACCCGTGGCATCTTCCGAGTCCATCAGTTTGAGAAGATTGAACAGTT  
 TGTGTAATCATACCCCATGACAACAAGTATGGGAGATGTTTGAAGAGATGATTACCACCGCAGAGGAG  
 TTCTACCAGTCCCTGGGATTCCCTACCACATTGTGAATATTGTCTCAGGTTCTTTGAATCATGCTGCCA  
 GTAAGAAGCTTGACCTGGAGGCCTGGTTCCGGGCTCAGGAGCCTCCGTGAGTTGGTCTCCTGTTCTAA  
 TTGCACGGATTACCAGGCTCGCCGGCTTCAATCCGATATGGGCAAAACCAAGAAGATGATGGACAAGGTG  
 GAGTTTGTCCATATGCTCAATGCTACCATGTGCGCCACTACCTGTACCATCTGCGCCATCCTGGAGAACT  
 ACCAGACAGAGAAGGCATCACTGTGCCTGAGAAATTGAAGGAGTTCATGCCGCCAGGACTGCAAGAACT  
 GATCCCTTTGTGAAGCCTGCGCCATTGAGCAGGAGCCATCAAAGAAGCAGAAGAAGCAACATGAGGGC  
 AGCAAAAAGAAAGCAGCAGCAAGAGACGTACCCTAGAAAACAGGCTGCAGAACATGGAGGTACCGATG  
 CT

**ACGCGT**ACGCGGCCGCTCGAGCAGAACTCATCTCAGAAGAGGATCTGGCAGCAAATGATATCCTGGATT  
 ACAAGGATGACGACGATAAGGTTTAA

**Protein Sequence:**

>RC203665 protein sequence  
 Red=Cloning site Green=Tags(s)

MVLDLDFRVKGGDPALIRETQEKRKFDPLVDQLVKADSEWRRRCFRADNLNKLKLNCSKTIGEKMKK  
 KEPVGDDESVPENLVSFDDLADALANLKVSQIKKVRLLIDEAILKCAERIKLEAERFENLREIGNLLH  
 PSVPISNDEDVDNKVERIWDCTVRKKYSHVDLVVMVDGFEGEKAVVAGSRGYFLKGVLVFLEQALIQY  
 ALRTLGSRGYIPIYTPFFMRKEVMQEVQALSQFDEELYKVIKKGSEKSDNSYDEKYL IATSEQPIAALH  
 RDEWLRPEDLPKYAGLSTCFRQEVGSHGRDTRGIFRVHQFEKIEQFVYSSPHDNKSWEMFEEMITTAEE  
 FYQSLGIPYHIVNIVSGLNHAASKKLDLEAWFPGSGAFRELVSCSNCTDYQARRLRIRYQTKKMMDKV  
 EFVHMLNATMCATTCTICAILENYQTEKGITVPEKLEKFMPPGLQELIPFVKPAPIEQEPSKKQKQHEG  
 SKKKAAARDVTLENRLQNMEVTD A

**TRTRPLEQKLI**SEEDLAANDILDYKDDDDKV

**Chromatograms:**

[https://cdn.origene.com/chromatograms/mk6566\\_b06.zip](https://cdn.origene.com/chromatograms/mk6566_b06.zip)

**Restriction Sites:**

Sgfl-MluI

Cloning Scheme:



ACCN: NM\_006513

ORF Size: 1542 bp

OTI Disclaimer: The molecular sequence of this clone aligns with the gene accession number as a point of reference only. However, individual transcript sequences of the same gene can differ through naturally occurring variations (e.g. polymorphisms), each with its own valid existence. This clone is substantially in agreement with the reference, but a complete review of all prevailing variants is recommended prior to use. [More info](#)

OTI Annotation: This clone was engineered to express the complete ORF with an expression tag. Expression varies depending on the nature of the gene.

Components: The ORF clone is ion-exchange column purified and shipped in a 2D barcoded Matrix tube containing 10ug of transfection-ready, dried plasmid DNA (reconstitute with 100 ul of water).

- Reconstitution Method:
1. Centrifuge at 5,000xg for 5min.
  2. Carefully open the tube and add 100ul of sterile water to dissolve the DNA.
  3. Close the tube and incubate for 10 minutes at room temperature.
  4. Briefly vortex the tube and then do a quick spin (less than 5000xg) to concentrate the liquid at the bottom.
  5. Store the suspended plasmid at -20°C. The DNA is stable for at least one year from date of shipping when stored at -20°C.

RefSeq: [NM\\_006513.4](#)

RefSeq Size: 1956 bp

RefSeq ORF: 1545 bp

Locus ID: 6301

UniProt ID: [P49591](#)

Cytogenetics: 1p13.3

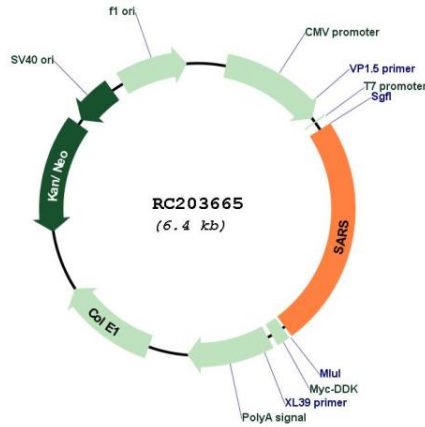
**Domains:** tRNA-synt\_2b, Seryl\_tRNA\_N

**Protein Pathways:** Aminoacyl-tRNA biosynthesis

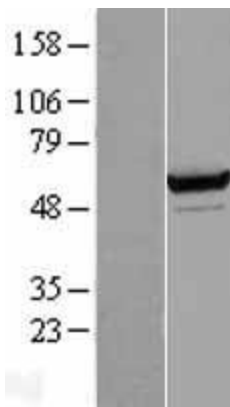
**MW:** 58.7 kDa

**Gene Summary:** This gene belongs to the class II amino-acyl tRNA family. The encoded enzyme catalyzes the transfer of L-serine to tRNA (Ser) and is related to bacterial and yeast counterparts. Multiple alternatively spliced transcript variants have been described but the biological validity of all variants is unknown. [provided by RefSeq, Jul 2010]

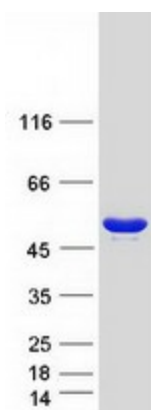
**Product images:**



Circular map for RC203665



Western blot validation of overexpression lysate (Cat# [LY416590]) using anti-DDK antibody (Cat# [TA50011-100]). Left: Cell lysates from untransfected HEK293T cells; Right: Cell lysates from HEK293T cells transfected with RC203665 using transfection reagent MegaTran 2.0 (Cat# [TT210002]).



Coomassie blue staining of purified SARS protein (Cat# [TP303665]). The protein was produced from HEK293T cells transfected with SARS cDNA clone (Cat# RC203665) using MegaTran 2.0 (Cat# [TT210002]).