

Product datasheet for **RC203664**

C21orf70 (FAM207A) (NM_058190) Human Tagged ORF Clone

Product data:

Product Type:	Expression Plasmids
Product Name:	C21orf70 (FAM207A) (NM_058190) Human Tagged ORF Clone
Tag:	Myc-DDK
Symbol:	C21orf70
Synonyms:	C21orf70; PRED56
Mammalian Cell Selection:	Neomycin
Vector:	pCMV6-Entry (PS100001)
E. coli Selection:	Kanamycin (25 ug/mL)
ORF Nucleotide Sequence:	>RC203664 ORF sequence Red=Cloning site Blue=ORF Green=Tags(s)

TTTTGTAATACGACTCACTATAGGGCGGCCGGAATTCGTCGACTGGATCCGGTACCGAGGAGATCTGCC
GCC**CGATCGCC**

ATGGGGAAAGTGAGGGGTTGCGCGCCCGAGTGCACCAGGCTGCCGTGAGGCCGAAAGGGGAGGCCGCC
CCGGCCCCCGCCCCCTGCCCGGAGGCGACCCCTCCGCCGGCTCGGCCCGGGGAAGGACTGGCGTT
CATCAACACCAACATCTTTGCCAGGACCAAGATAGACCCAGCGCCTTGGTGCAGAAGCTGGAGCTGGAC
GTGAGGAGTGCACTTCCGTGAGGAGAGGTGAGGCAGGCTCGAGTGCACGGAGCGTCCCTCCATCAGGA
GAGGTGCAGAGGCCAAGACCGTTTTGCCAAGAAGGAGAAAATGAAGCTGAGGCGTGAGCAATGGTTGCA
GAAAATCGAAGCCATAAACTGGCTGAGCAGAAGCACAGGGAGGAGCGGAGGCCGAGGGCCACGGTGGTG
GTGGGGGACCTGCACCCTCTCAGGGATGCCCTGCCCGAGCTGCTGGGGCTCGAGGCTGGCAGCCGGCC
AAGCCCGCAGCAGGGAGAGCAACAAGCCCCGGCCCTCAGAGCTCAGCCGGATGAGCGCAGCCAGAGACA
GCAGCTTCTCGAGGAAGAAAGGACCCGTTTCAGGAGCTGCTGGCCAGTCCGGCTACAGAGCCAGCCCC
CTGGTGGCCATCGGGCAGACGCTGGCCCGCAGATGCAGCTGGAAGATGGCGGCCAGTCT

ACGCGTACGCGGGCCGCTCGAGCAGAACTCATCTCAGAAGAGGATCTGGCAGCAATGATATCTGGATT
ACAAGGATGACGACGATAAGGTTTAA



[View online »](#)

Protein Sequence: >RC203664 protein sequence
Red=Cloning site Green=Tags(s)

MGKVRGLRARVHQAAVRPKGEAAPGPAPPAPPEATPPPASAAGKDWAFINTNIFARTKIDPSALVQKLELD
 VRSVTSVRRGEAGSSARSVPSIRRGAEAKTVLPKKEKMKLRREQWLQKIEAIKLAEQKHREERRRATV
 VGDHLPLRDALPELLGLEAGSRRQARSRESNKRPRPSEL SRMSAAQRQQLLEEERTRFQELLASPAYRASP
 LVAIGQTLARQMQLLEDGGQL

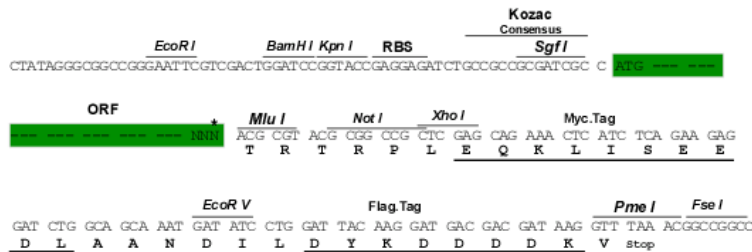
TRTRPLEQKLISEEDLAANDILDYKDDDDKV

Chromatograms: https://cdn.origene.com/chromatograms/mk6423_a08.zip

Restriction Sites: SgfI-MluI

Cloning Scheme:

Cloning sites used for ORF Shuttling:



* The last codon before the Stop codon of the ORF

ACCN: NM_058190

ORF Size: 690 bp

OTI Disclaimer: The molecular sequence of this clone aligns with the gene accession number as a point of reference only. However, individual transcript sequences of the same gene can differ through naturally occurring variations (e.g. polymorphisms), each with its own valid existence. This clone is substantially in agreement with the reference, but a complete review of all prevailing variants is recommended prior to use. [More info](#)

OTI Annotation: This clone was engineered to express the complete ORF with an expression tag. Expression varies depending on the nature of the gene.

Components: The ORF clone is ion-exchange column purified and shipped in a 2D barcoded Matrix tube containing 10ug of transfection-ready, dried plasmid DNA (reconstitute with 100 ul of water).

Reconstitution Method:

1. Centrifuge at 5,000xg for 5min.
2. Carefully open the tube and add 100ul of sterile water to dissolve the DNA.
3. Close the tube and incubate for 10 minutes at room temperature.
4. Briefly vortex the tube and then do a quick spin (less than 5000xg) to concentrate the liquid at the bottom.
5. Store the suspended plasmid at -20°C. The DNA is stable for at least one year from date of shipping when stored at -20°C.

RefSeq: [NM_058190.4](#)

RefSeq Size: 964 bp

RefSeq ORF: 693 bp

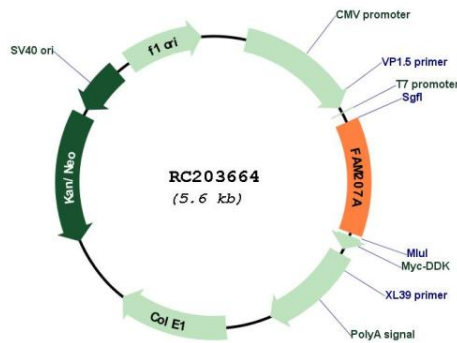
Locus ID: 85395

UniProt ID: [Q9NSI2](#)

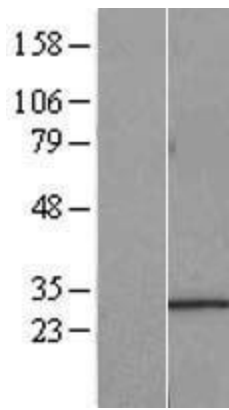
Cytogenetics: 21q22.3

MW: 25.5 kDa

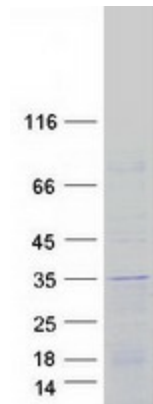
Product images:



Circular map for RC203664



Western blot validation of overexpression lysate (Cat# [LY409226]) using anti-DDK antibody (Cat# [TA50011-100]). Left: Cell lysates from untransfected HEK293T cells; Right: Cell lysates from HEK293T cells transfected with RC203664 using transfection reagent MegaTran 2.0 (Cat# [TT210002]).



Coomassie blue staining of purified FAM207A protein (Cat# [TP303664]). The protein was produced from HEK293T cells transfected with FAM207A cDNA clone (Cat# RC203664) using MegaTran 2.0 (Cat# [TT210002]).