

## Product datasheet for RC203659

### STMN3 (NM\_015894) Human Tagged ORF Clone

#### Product data:

**Product Type:** Expression Plasmids  
**Product Name:** STMN3 (NM\_015894) Human Tagged ORF Clone  
**Tag:** Myc-DDK  
**Symbol:** STMN3  
**Synonyms:** SCLIP  
**Mammalian Cell Selection:** Neomycin  
**Vector:** pCMV6-Entry (PS100001)  
**E. coli Selection:** Kanamycin (25 ug/mL)  
**ORF Nucleotide Sequence:** >RC203659 ORF sequence  
 Red=Cloning site Blue=ORF Green=Tags(s)

TTTTGTAACTACGACTCACTATAGGGCGGCCGGAATTCGTCGACTGGATCCGGTACCGAGGAGATCTGCC  
 GCC**CGCATCGCC**

ATGGCCAGCACCATTTCGCCTACAAGGAGAAGATGAAGGAGCTGTCGGTGCTGTCGCTCATCTGCTCCT  
 GCTTCTACACACAGCCGACCCCAATACCGTCTACCACTACGGGGACATGGAGGTGAAGCAGCTGGACAA  
 GCGGGCCTCAGGCCAGAGCTTCGAGGTATCCTCAAGTCCCTTCTGACCTGTCCCAGAGAGCCCTATG  
 CTCTCTCCCCACCAAGAAGAAGGACACCTCCCTGGAGGAGCTGCAAAAGCGGCTGGAGGCAGCCGAGG  
 AGCGGAGGAAGACGAGGAGGCGCAGGTGCTGAAGCAGCTGGCGGAGCGGCGGAGCAGCAGCGCGAGGT  
 GCTGCACAAGGCGCTGGAGGAGAATAACAATTAGCCGCCAGGCGGAGGAGAAGCTCAACTACAAGATG  
 GAGCTCAGCAAGGAGATCCGCGAGGCACACCTGGCCGCACTGCGCGAGCGGCTGCGCGAGAAGGAGCTGC  
 ACGCGGCCGAGGTGCGCAGGAACAAGGAGCAGCGAGAAGAGATGTCGGGC

**ACGCGT**ACGCGGCCGCTCGAGCAGAACTCATCTCAGAAGAGGATCTGGCAGCAAATGATATCCTGGATT  
 ACAAGGATGACGACGATAAGGTTTAA

**Protein Sequence:** >RC203659 protein sequence  
 Red=Cloning site Green=Tags(s)

MASTISAYKEKMKELSVLSLICSFYTPHPNTVYQYGDMEVKQLDKRASGQSFEVILKSPSDLSPESPM  
 LSSPPKKKDTLEELQKRLEAAEERRKTQEAQVLKQLAERREHEREVLHKALEENNFSRQAEELKNYKM  
 ELSKEIREAHLAALRERLREKELHAAEVRRNKEQREMSG

**TR**TRPLEQKLISEEDLAANDILDYKDDDDKV

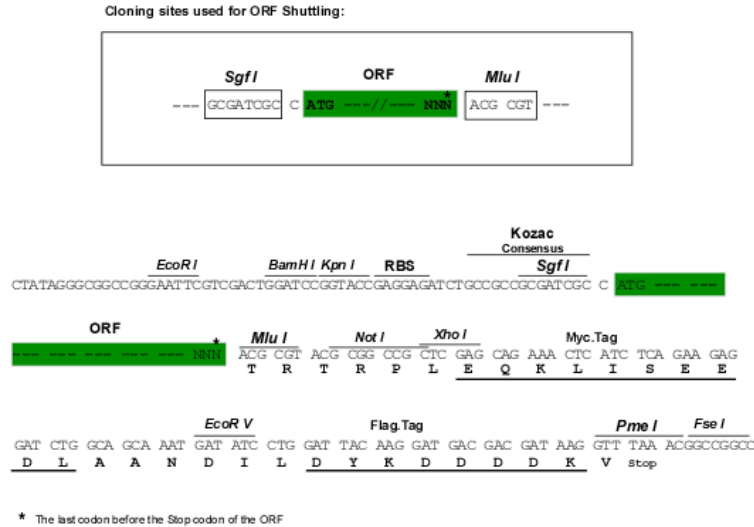
**Chromatograms:** [https://cdn.origene.com/chromatograms/mk6057\\_a12.zip](https://cdn.origene.com/chromatograms/mk6057_a12.zip)



View online »

**Restriction Sites:** SgfI-MluI

**Cloning Scheme:**



**ACCN:** NM\_015894

**ORF Size:** 540 bp

**OTI Disclaimer:** The molecular sequence of this clone aligns with the gene accession number as a point of reference only. However, individual transcript sequences of the same gene can differ through naturally occurring variations (e.g. polymorphisms), each with its own valid existence. This clone is substantially in agreement with the reference, but a complete review of all prevailing variants is recommended prior to use. [More info](#)

**OTI Annotation:** This clone was engineered to express the complete ORF with an expression tag. Expression varies depending on the nature of the gene.

**Components:** The ORF clone is ion-exchange column purified and shipped in a 2D barcoded Matrix tube containing 10ug of transfection-ready, dried plasmid DNA (reconstitute with 100 ul of water).

**Reconstitution Method:**

1. Centrifuge at 5,000xg for 5min.
2. Carefully open the tube and add 100ul of sterile water to dissolve the DNA.
3. Close the tube and incubate for 10 minutes at room temperature.
4. Briefly vortex the tube and then do a quick spin (less than 5000xg) to concentrate the liquid at the bottom.
5. Store the suspended plasmid at -20°C. The DNA is stable for at least one year from date of shipping when stored at -20°C.

**Note:** Plasmids are not sterile. For experiments where strict sterility is required, filtration with 0.22um filter is required.

**RefSeq:** [NM\\_015894.4](#)

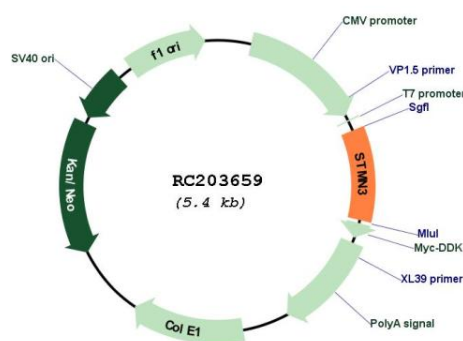
**RefSeq Size:** 2441 bp

**RefSeq ORF:** 543 bp

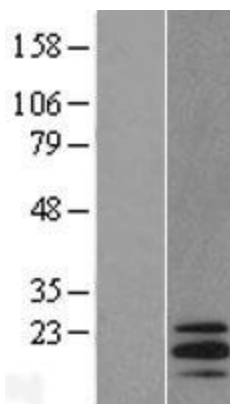
**Locus ID:** 50861  
**UniProt ID:** [Q9NZ72](#)  
**Cytogenetics:** 20q13.33  
**MW:** 21 kDa

**Gene Summary:** This gene encodes a protein which is a member of the stathmin protein family. Members of this protein family form a complex with tubulins at a ratio of 2 tubulins for each stathmin protein. Microtubules require the ordered assembly of alpha- and beta-tubulins, and formation of a complex with stathmin disrupts microtubule formation and function. A pseudogene of this gene is located on chromosome 22. Alternative splicing results in multiple transcript variants. [provided by RefSeq, Jan 2013]

## Product images:



Circular map for RC203659



Western blot validation of overexpression lysate (Cat# [LY414288]) using anti-DDK antibody (Cat# [TA50011-100]). Left: Cell lysates from untransfected HEK293T cells; Right: Cell lysates from HEK293T cells transfected with RC203659 using transfection reagent MegaTran 2.0 (Cat# [TT210002]).