

Product datasheet for RC203657

DULLARD (CTDNEP1) (NM_015343) Human Tagged ORF Clone

Product data:

Product Type:	Expression Plasmids
Product Name:	DULLARD (CTDNEP1) (NM_015343) Human Tagged ORF Clone
Tag:	Myc-DDK
Symbol:	DULLARD
Synonyms:	DULLARD; HSA011916; NET56
Mammalian Cell Selection:	Neomycin
Vector:	pCMV6-Entry (PS100001)
E. coli Selection:	Kanamycin (25 ug/mL)
ORF Nucleotide Sequence:	>RC203657 ORF sequence Red=Cloning site Blue=ORF Green=Tags(s)

TTTTGTAATACGACTCACTATAGGGCGGCCGGAATTCGTCGACTGGATCCGGTACCGAGGAGATCTGCC
GCC**CGATCGCC**

ATGATGCGGACGCAGTGTCTGCTGGGGCTGCGCACGTTTCGTGGCCTTCGCCGCAAGCTCTGGAGCTTCT
TCATTTACCTTTTTCGGGAGGCAGATCCGCACGGTAATTCAGTACCAAAGTTCGATATGATATCCTCCC
CTTATCTCCTGTGTCCCAGGATCGGCTAGCCCAGGTGAAGAGGAAGATCCTGGTCTGGATCTGGATGAG
ACACTTATCACTCCCACCATGATGGGGTCTGAGGCCACAGTCCGGCCTGGTACGCCTCTGACTTCA
TCCTCAAGGTGGTAATAGACAAACATCCTGTCCGGTTTTTTGTACATAAGAGGCCCATGTGGATTTCTT
CCTGGAAGTGGTGAAGCAGTGGTACGAGCTGGTGGTGTACAGCAAGCATGGAGATCTATGGCTCTGCT
GTGGCAGATAAACTGGACAATAGCAGAAGCATTCTTAAGAGGAGATATTACAGACAGCACTGCACCTTTGG
AGTTGGGCAGCTACATCAAGGACCTCTCTGTGGTCCACAGTGACCTCTCCAGCATTGTGATCCTGGATAA
CTCCCCAGGGGCTTACAGGAGCCATCCAGACAATGCCATCCCCATCAAATCCTGGTTCAGTGACCCACGC
GACACAGCCCTTCTCAACCTGCTCCCAATGCTGGATGCCCTCAGGTTACCGCTGATGTTCTCGTCCGGTGC
TGAGCCGAAACCTTACCAACATCGGCTCTGG

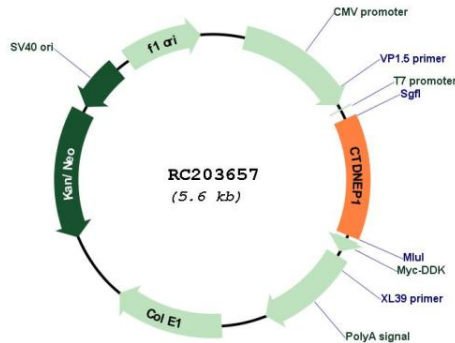
ACGCGTACGCGGCCGCTCGAGCAGAACTCATCTCAGAAGAGGATCTGGCAGCAAATGATATCCTGGATT
ACAAGGATGACGACGATAAGGTTTAA



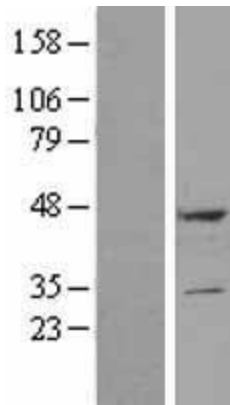
[View online »](#)

Reconstitution Method:	<ol style="list-style-type: none">1. Centrifuge at 5,000xg for 5min.2. Carefully open the tube and add 100ul of sterile water to dissolve the DNA.3. Close the tube and incubate for 10 minutes at room temperature.4. Briefly vortex the tube and then do a quick spin (less than 5000xg) to concentrate the liquid at the bottom.5. Store the suspended plasmid at -20°C. The DNA is stable for at least one year from date of shipping when stored at -20°C.
RefSeq:	NM_015343.3 , NP_056158.2
RefSeq Size:	1780 bp
RefSeq ORF:	735 bp
Locus ID:	23399
UniProt ID:	O95476
Cytogenetics:	17p13.1
Domains:	CPDc
Protein Families:	Transmembrane
MW:	28.4 kDa
Gene Summary:	<p>Serine/threonine protein phosphatase forming with CNEP1R1 an active phosphatase complex that dephosphorylates and may activate LPIN1 and LPIN2. LPIN1 and LPIN2 are phosphatidate phosphatases that catalyze the conversion of phosphatidic acid to diacylglycerol and control the metabolism of fatty acids at different levels. May indirectly modulate the lipid composition of nuclear and/or endoplasmic reticulum membranes and be required for proper nuclear membrane morphology and/or dynamics. May also indirectly regulate the production of lipid droplets and triacylglycerol. May antagonize BMP signaling. [UniProtKB/Swiss-Prot Function]</p>

Product images:



Circular map for RC203657



Western blot validation of overexpression lysate (Cat# [LY428338]) using anti-DDK antibody (Cat# [TA50011-100]). Left: Cell lysates from untransfected HEK293T cells; Right: Cell lysates from HEK293T cells transfected with [RC227230] using transfection reagent MegaTran 2.0 (Cat# [TT210002]).