

Product datasheet for **RC203651**

WSCD1 (NM_015253) Human Tagged ORF Clone

Product data:

Product Type:	Expression Plasmids
Product Name:	WSCD1 (NM_015253) Human Tagged ORF Clone
Tag:	Myc-DDK
Symbol:	WSCD1
Mammalian Cell Selection:	Neomycin
Vector:	pCMV6-Entry (PS100001)
E. coli Selection:	Kanamycin (25 ug/mL)



[View online »](#)

ORF Nucleotide Sequence:

>RC203651 ORF sequence
 Red=Cloning site Blue=ORF Green=Tags(s)

TTTTGTAATACGACTCACTATAGGGCGGCCGGGAATTCGTCGACTGGATCCGGTACCGAGGAGATCTGCC
 GCC**CGGATCGCC**

ATGGCCAAACCTTTCTTCCGACTCCAGAAGTTTCTCCGCCGAACACAGTTCCTGCTGTTCTCTCACGG
 CTGCCTACCTGATGACCGCAGCCTGCTGCTGCTGCAGCGGGTCCGCGTGGCTCTCCACAGGGCCCCG
 GGCACCCGGCCCCCTGCAGACCTTGCCAGTGGCCGCGTGGCGTGGGCTTGGTGGACAGCAGA
 GCCCTGCACGACCCTCGAGTCAGCCAGAGCTGCTGCTGGGTGTGGACATGCTGCAGAGCCCCCTGACC
 GGCCCCGGCCCCCGCTGGCTCCGGAGCCGCAACTCGGAGCTGCGTCAGTTGCGTCGCCGCTGGTT
 CCACCCTTCATGAGTGACTCCAGGGACCGCCGCCCTGGGCCCGAGGCTGCCAGGCCGCCATCCAC
 AGCCGAGGCACCTACATTGGATGCTTCAGTGACGATGGCCACGAGAGGACTCTGAAAGGAGCTGTGTTT
 ATGACTTGAGAAAGATGACTGTCTCCACTGCCAGGATGCGTGTGCTGAGCGTCTATGTCTACGCCGG
 CTTGGAGGCCGGGCGGAGTGTACTGCGGGAACCGCTGCCAGCGGTGAGCGTGGGCTGGAAGAGTGT
 AACTATGAGTGCAAAGGCGAGAAGGGCTCTGTGTGCGGGCTGTGGACCGCTCTCCGTGTACCGTGTGG
 ACGAGCTGCAGCCGGCTCCAGGAAGCGCGGACCGCCACCTACCGCGGATGCTTCCGACTGCCAGAGAA
 CATCACACATGCCTTCCCAGCTCCCTGATACAGGCCAATGTGACCGTGGGGACTTGTCCGGCTTTTGT
 TCCCAGAAAGAGTTCCCTTGGCCATTCTCAGGGGCTGGGAATGCTACTGTGCTTACCCTACCCCGGT
 TCAACCTGCGGGATGCCATGGACAGCTCAGTATGTGGCCAGGACCTGAGGCACAGAGGCTGGCAGAATA
 CTGTGAGGTCTACCAGACACCTGTGCAAGACACTCGTTGTACAGACAGGAGTTCTGCCTAACAAATCC
 AAAGTGTGTGGCTTTGTCAAGCTTCCCAGGAGCCGGGAACACGTGGCACGGCACCTCATTGAGCATG
 CCACTGGCTTCTATACAGGGAGCTACTACTTTGATGGAACCTCTACAACAAAGGTTCAAGGGCGAAAA
 GGACCCTGGCGAGCCGACGCACCATCTGTGTCAAAACCCACGAGAGTGGCAGGAGGGAGATTGAGATG
 TTTGATTACGCCATCCTGCTAATCCGGAACCCATACAGTCCCTGGTGGCAGAATTCAACAGAAAATGTG
 CCGGGCACCTGGGATATGCAGCTGACCGCAACTGGAAGAGCAAAGAGTGGCCGGACTTTGTCAACAGCTA
 CGCCTCGTGGTGGTCTCGCACGTCTGGACTGGCTCAAGTACGGGAAGCGGCTGCTGGTGGTGCCTAC
 GAGGAGCTGCGGCGCAGCCTGGTCCCACGTTACGGGAGATGGTGGCCTTCTCAACGTGTCTGTGAGCG
 AGGAGCGGCTGCTCTGCGTGGAGAACAACAAGGAGGCGAGCTCCGGCGGCGGGCCGGCTCCCACGA
 CCCTGAGCCCTTACCCCGGAGATGAAAGACTTGATCAATGGCTACATCCGGACGGTGGACCAAGCCCTG
 CGTGACCACAACCTGGACGGGCTGCCAGGGAGTATGTGCCAGA

ACGCGTACGCGGCCGCTCGAGCAGAACTCATCTCAGAAGAGGATCTGGCAGCAAATGATATCCTGGATT
 ACAAGGATGACGACGATAAGGTTTAA

Protein Sequence:

>RC203651 protein sequence
 Red=Cloning site Green=Tags(s)

MAKPFRLQKFLRRTQFLFFLTAAYLMTGSLLLLQVRVVALPQPRAPGPLQTLPVAVALGVLLDSR
 ALHDPVSPPELLLGVDMLQSPLTRPRGPRWLRSRNSLRQLRRRWFHFMDSQPPALGPEARPAIH
 SRGTYIGCFSDDGHERTLKGAVFYDLRKMTVSHCQDACAERSYVYAGLEAGAECYCGNRLPAVSVGLEEC
 NYECKGEKGSVCGAVDRLSVYRVDELQPGSRKRRATYRGCFLPENITHAFPSLIQANVTGTCSGFC
 SQKEFPLAILRGWECYAYPTPRFNLRDAMDSSVCGQDPEAQLAEYCEVYQTPVQDTRCDRRFLPNKS
 KVFVALSSFPAGNTWARHLIEHATGFYTGSYFDGTLYNKGFKGEKDHWRSRRTICVKTHESGRREIEM
 FDSAILLIRNPYRSLVAEFNRKAGHLGYAADRNWKSKEWPDFVNSYASWSSHVDLWKYGRLLVVHY
 EELRRSLVPTLREMVAFNLNVSVEERLLCVENKKEGSFRRRGRSHDPEPFTPEMKDLINGYIRTVDQAL
 RDHNWTGLPREYVPR

TRTRPLEQKLISEEDLAANDILDYKDDDDKV

Chromatograms:

https://cdn.origene.com/chromatograms/mk6566_e09.zip

Restriction Sites:

SgfI-MluI

Cloning Scheme:


ACCN: NM_015253

ORF Size: 1725 bp

OTI Disclaimer: The molecular sequence of this clone aligns with the gene accession number as a point of reference only. However, individual transcript sequences of the same gene can differ through naturally occurring variations (e.g. polymorphisms), each with its own valid existence. This clone is substantially in agreement with the reference, but a complete review of all prevailing variants is recommended prior to use. [More info](#)

OTI Annotation: This clone was engineered to express the complete ORF with an expression tag. Expression varies depending on the nature of the gene.

Components: The ORF clone is ion-exchange column purified and shipped in a 2D barcoded Matrix tube containing 10ug of transfection-ready, dried plasmid DNA (reconstitute with 100 ul of water).

- Reconstitution Method:**
1. Centrifuge at 5,000xg for 5min.
 2. Carefully open the tube and add 100ul of sterile water to dissolve the DNA.
 3. Close the tube and incubate for 10 minutes at room temperature.
 4. Briefly vortex the tube and then do a quick spin (less than 5000xg) to concentrate the liquid at the bottom.
 5. Store the suspended plasmid at -20°C. The DNA is stable for at least one year from date of shipping when stored at -20°C.

RefSeq: [NM_015253.1](#), [NP_056068.1](#)

RefSeq Size: 5827 bp

RefSeq ORF: 1728 bp

Locus ID: 23302

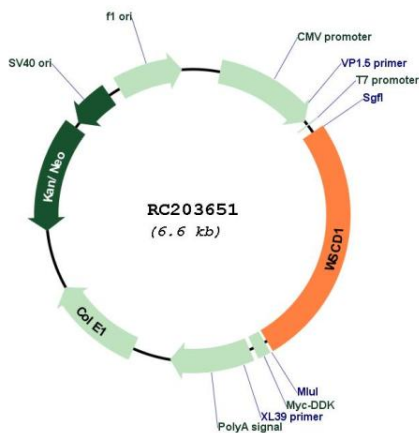
UniProt ID: [Q658N2](#)

Cytogenetics: 17p13.2

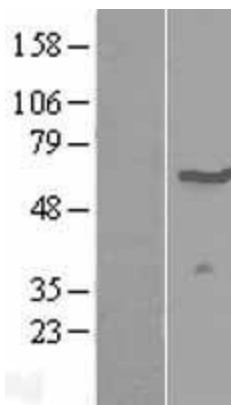
Protein Families: Transmembrane

MW: 65.7 kDa

Product images:



Circular map for RC203651



Western blot validation of overexpression lysate (Cat# [LY414680]) using anti-DDK antibody (Cat# [TA50011-100]). Left: Cell lysates from untransfected HEK293T cells; Right: Cell lysates from HEK293T cells transfected with RC203651 using transfection reagent MegaTran 2.0 (Cat# [TT210002]).