

Product datasheet for **RC203650**

SLC25A22 (NM_024698) Human Tagged ORF Clone

Product data:

Product Type:	Expression Plasmids
Product Name:	SLC25A22 (NM_024698) Human Tagged ORF Clone
Tag:	Myc-DDK
Symbol:	SLC25A22
Synonyms:	DEE3; EIEE3; GC-1; GC1; NET44
Mammalian Cell Selection:	Neomycin
Vector:	pCMV6-Entry (PS100001)
E. coli Selection:	Kanamycin (25 ug/mL)
ORF Nucleotide Sequence:	>RC203650 ORF sequence Red=Cloning site Blue=ORF Green=Tags(s)

TTTTGTAATACGACTCACTATAGGGCGGCCGGAATTCGTCGACTGGATCCGGTACCGAGGAGATCTGCC
GCC**CGATCGCC**

ATGGCTGATAAGCAGATCAGCCTGCCAGCAAGCTCATCAATGGCGGCATCGCCGGGCTGATCGGTGTCA
CCTGCGTGTTTCCCATCGACCTGGCCAAGACCAGGCTGCAGAACCAGCAGAACGGCCAGCGGTGTACAC
GAGCATGCCGACTGCCTCATCAAGACCGTCCGCTCCGAGGGCTACTTCGGCATGTACCGGGGAGCTGCT
GTGAACCTTGACCCTCGTACCCCGAGAAGGCCATCAAGCTGGCAGCCAACGACTTCTCCGACATCAGC
TCTCTAAGGACGGCAGAAGCTGACCCTGCTTAAAGAGATGCTGGCGGGCTGTGGGGCTGGCACCTGCCA
GGTGATCGTGACCACGCCATGGAGATGCTGAAGATCCAGCTGCAGGATGCAGGGCGCATTGCCGCCAG
AGGAAGATCCTGGCTGCCAGGGCCAGCTCTCGGCCAGGGGGTGGCCAGCCCTCAGTGGAGGCTCCAG
CTGCCCTCGGCCACGGCCACCCAGCTGACCCGCGACCTGCTGCGGAGCCGTGGCATTGCCGGTCTCTA
CAAGGGACTCGGGGCCACGCTGCTCAGGGATGTCCCTTCTGTGGTGTACTTCCCGCTCTTTGCCAAC
CTGAACCAGCTGGGCCGCCCGCGTCCGAGGAGAAGTCGCTTTCTACGTGCTCTTCTGGCCGGCTGTG
TGGCTGGGAGTGCCCGCGCTGTGGCCGTAACCCTGTGATGTGGTGAAGACGGCTCCAGTCACTTCA
GCGAGGCGTCAACGAGGACACCTACTCTGGGATCCTGGACTGTGCCAGGAAGATCCTGCGGCACGAGGGC
CCCTCGGCCTTCTGAAGGGCGCCTACTGCCGCGCGTGGTATCGCGCCCTTTTCGGCATCGCACAGG
TGGTCTACTTCTGGGCATCGCGGAGTCCCTGCTGGGGCTGCTGCAGGACCCCGAGCC

ACGCGTACGCGGCCGCTCGAGCAGAAACTCATCTCAGAAGAGGATCTGGCAGCAAATGATATCCTGGATT
ACAAGGATGACGACGATAAGGTTTAA



[View online »](#)

Protein Sequence: >RC203650 protein sequence
Red=Cloning site Green=Tags(s)

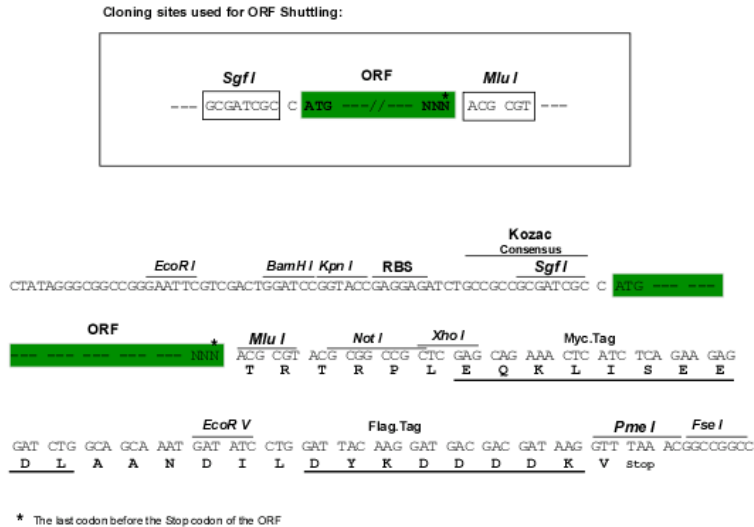
MADKQISLPAKLINGGIAGLIGVTCVFPIDLAKTRLQNQQNGQRVYTSMSDCLIKTVRSEGYFGMYRGAA
 VNLTLVTPEKAIKLAANDFFRHQLSKDGQKLTLLKEMLAGCGAGTCQIVITTPMELKIQLDAGRIAAQ
 RKILAAQQLSAQGGAQPSVEAPAAPRPTATQLTRDLLRSRGIAGLYKGLGATLLRDVPFVSVYFPLFAN
 LNQLGRPASEEKSPFYVSFLAGCVAGSAAAVAVNPCDVVKTRLQSLQRGVNEDTYSGILDCARKILRHEG
 PS AFLKGAYCRALVIAPLFGIAQVYVYFLGIAESLLGLLQDPQA

TRTRPLEQKLISEEDLAANDILDYKDDDDKV

Chromatograms: https://cdn.origene.com/chromatograms/mk6065_d05.zip

Restriction Sites: SgfI-MluI

Cloning Scheme:



ACCN: NM_024698

ORF Size: 969 bp

OTI Disclaimer: The molecular sequence of this clone aligns with the gene accession number as a point of reference only. However, individual transcript sequences of the same gene can differ through naturally occurring variations (e.g. polymorphisms), each with its own valid existence. This clone is substantially in agreement with the reference, but a complete review of all prevailing variants is recommended prior to use. [More info](#)

OTI Annotation: This clone was engineered to express the complete ORF with an expression tag. Expression varies depending on the nature of the gene.

Components: The ORF clone is ion-exchange column purified and shipped in a 2D barcoded Matrix tube containing 10ug of transfection-ready, dried plasmid DNA (reconstitute with 100 ul of water).

Reconstitution Method:

1. Centrifuge at 5,000xg for 5min.
2. Carefully open the tube and add 100ul of sterile water to dissolve the DNA.
3. Close the tube and incubate for 10 minutes at room temperature.
4. Briefly vortex the tube and then do a quick spin (less than 5000xg) to concentrate the liquid at the bottom.
5. Store the suspended plasmid at -20°C. The DNA is stable for at least one year from date of shipping when stored at -20°C.

RefSeq: [NM_024698.6](#)

RefSeq Size: 2822 bp

RefSeq ORF: 972 bp

Locus ID: 79751

UniProt ID: [Q9H936](#)

Cytogenetics: 11p15.5

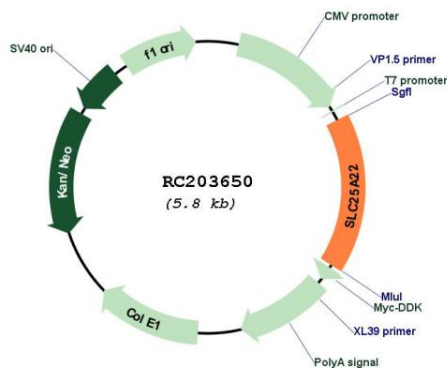
Domains: mito_carr

Protein Families: Transmembrane

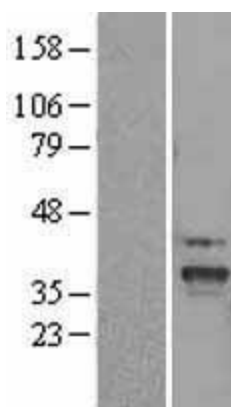
MW: 34.5 kDa

Gene Summary: This gene encodes a mitochondrial glutamate carrier. Mutations in this gene are associated with early infantile epileptic encephalopathy. Multiple alternatively spliced variants, encoding the same protein, have been identified.[provided by RefSeq, Jul 2010]

Product images:



Circular map for RC203650



Western blot validation of overexpression lysate (Cat# [LY411155]) using anti-DDK antibody (Cat# [TA50011-100]). Left: Cell lysates from untransfected HEK293T cells; Right: Cell lysates from HEK293T cells transfected with RC203650 using transfection reagent MegaTran 2.0 (Cat# [TT210002]).