

## Product datasheet for **RC203648**

### TM9SF4 (NM\_014742) Human Tagged ORF Clone

#### Product data:

Product Type:	Expression Plasmids
Product Name:	TM9SF4 (NM_014742) Human Tagged ORF Clone
Tag:	Myc-DDK
Symbol:	TM9SF4
Synonyms:	dj836N17.2
Mammalian Cell Selection:	Neomycin
Vector:	pCMV6-Entry (PS100001)
E. coli Selection:	Kanamycin (25 ug/mL)



[View online »](#)

**ORF Nucleotide Sequence:**

>RC203648 representing NM\_014742  
 Red=Cloning site Blue=ORF Green=Tags(s)

TTTTGTAATACGACTCACTATAGGGCGGCCGGGAATTCGTCGACTGGATCCGGTACCGAGGAGATCTGCC  
 GCC**CGGATCGCC**

ATGTGTGAAACAAGCGCCTTCTATGTGCCTGGGGTTCGCGCCTATCAACTCCACCAGAACGATCCCGTAG  
 AAATCAAGGCTGTGAAGCTCACCAGCTCTCGAACCAGCTACCTTATGAATACTATTCAGTCCCTTCTG  
 CCAGCCCAGCAAGATAACCTACAAGGCAGAGAATCTGGGAGAGGTGCTGAGAGGGGACCGGATTGTCAAC  
 ACCCCTTCCAGGTTCTCATGAACAGCGAGAAGAAGTGTGAAGTTCTGTGCAGCCAGTCCAAACAAGCCAG  
 TGACCCTGACAGTGGAGCAGAGCCGACTCGTGGCCGAGCGGATCACAGAAGACTACTACGTCCACCTCAT  
 TGCTGACAACCTGCCTGTGGCCACCCGGCTGGAGCTCTACTCCAACCGAGACAGCGATGACAAGAAGAAG  
 GAAAAAGATGTGCAGTTGAACACGGCTACCGGCTCGGCTTACAGATGTCAACAAGATCTACCTGCACA  
 ACCACCTCTCATTATCCTTTACTATCATCGGGAGGACATGGAAGAGGACCAGGAGCACAGTACCGTGT  
 CGTCCGCTTCGAGGTGATTCCCCAGAGCATCAGGCTGGAGACCTCAAAGCAGATGAGAAGATTCTGTGC  
 ACTCTGCCTGAGGGTACCAACTCCTCGCCCCAAGAAATTGACCCACCAAGGAGAATCAGCTGTACTTCA  
 CCTACTCTGTCCACTGGGAGGAAAGTGATATCAAATGGGCCTCTCGCTGGGACACTTACCTGACCATGAG  
 TGACGTCCAGATCCACTGGTTTTCTATCATTAACCTCCGTTGTTGTGGTCTTCTTCTGTCAGGTATCCTG  
 AGCATGATTATCATTCCGACCCTCCGGAAGGACATTGCCAACTACAACAAGGAGGATGACATTGAAGACA  
 CCATGGAGGAGTCTGGGTGGAAGTTGGTGCACGGCGAGCTTTCAGGCCCCCCAGTACCCCATGATCCT  
 CAGCTCCCTGCTGGGCTCAGGCATTGAGCTGTTCTGTATGATCCTCATCGTCATCTTTGTAGCCATGCTT  
 GGGATGCTGTGCCCCAGCCGGGGAGCTCTCATGACCACAGCCTGCTTCTCTTTCATGTTTCATGGGGG  
 TGTTTGGCGGATTTTCTGCTGGCCGTCTGTACCGCACTTTAAAAGGCCATCGGTGGAAGAAGAGCCTT  
 CTGTACGGCAACTCTGTACCCTGGTGTGGTTTTTGGCATCTGCTTCGTATTGAATTGCTTCAATTTGGGA  
 AAGCACTCATCAGGAGCGGTGCCCTTCCACCATGGTGGCTCTGCTGTGCATGTGGTCCGGATCTCCC  
 TGCCCTCGTCTACTTGGGCTACTACTCGGCTTCCGAAAGCAGCCATATGACAACCCTGTGCGCACCAA  
 CCAGATCCCCCGCAGATCCCCGAGCAGCGGTGATGAACCGATTGTGGGCATCCTCATGGCTGGG  
 ATCTTGCCTTCCGGCCCATGTTTCATCGAGCTTCTTTCATCTTTCAGTGTATCTGGGAGAATCAGTTCT  
 ATTACCTTTGGCTTCTGTTCTTGTTCATCATCCTGGTGGTATCCTGTTCAAAATCAGCATCGT  
 CATGGTGTACTTCCAGCTGTGTGCAGAGGATTACCGCTGGTGGTGGAGAAATTTCTAGTCTCCGGGGC  
 TCTGCATTCTACGTCCTGTTTATGCCATTTTTATTTTCGTTAACAGCTGGACATCGTGGAGTTTATCC  
 CCTCTCTCTACTTTGGCTACACGGCCCTCATGGTCTTGTCTTCTGGCTGCTAACGGGTACCATCGG  
 CTCTATGCAGCCTACATGTTTGTTCGCAAGATCTATGCTGCTGTGAAGATAGAC

**ACGCGT**ACGCGGCCGCTCGAGCAGAACTCATCTCAGAAGAGGATCTGGCAGCAAATGATATCCTGGATT  
 ACAAGGATGACGACGATAAGGTTTAA

**Protein Sequence:**

>RC203648 representing NM\_014742  
 Red=Cloning site Green=Tags(s)

MCETSAFYVPGVAPINFHQNDPVEIKAVKLTSSRTQLPYEYSLPFCQPSKITYKAENLGEVLRGDRIVN  
 TPFQVLMNSEKKCEVLCSQSNKPVTLTVEQSRLVAERITEDYYVHLIADNLPVATRLELYSNRSDDKKK  
 EKDVQFEHGYRLGFTDVNKIYLHNHLSFILYYHREDMEEDQEHTYRVVRFVFIQPSIRLEDLKADEKSSC  
 TLPEGTNSSPQIDPTKENQLYFTYSVHWEEEDIKWASRWDTYL TMSDVQIHWFSIINSVVVFFLSGIL  
 SMIIIRTLRKDIANYNKEDDIEDTMEESGWKLVHGDVFRPPQYPMILSLLGSGIQLFCMILIVIFVAML  
 GMLSPSSRGALMTTACFLFMFMGVFGGFSAGRLYRTLKGRWKKGAFCTATLYPGVVFVICFVLNCFIWG  
 KHSSGAVPFPTMVALLCMWFGISLPLVYLYGYFGRKQPYDNPVRTNQIPRQIPEQRWYMNRFVGIIMAG  
 ILPFGAMFIELFFIFSAIWENQFYLLFGFLFLVFIILVSCSQISIVMVFYQLCAEDYRWWWRFNLFVSGG  
 SAFYVLYVAIFYFVNKL DIVEFIPSLLYFGYALMVL SFWLLTGTIGFYAAYMFVRKIYA AVKID

**TR**TRPLEQKLISEEDLAANDILDYKDDDDKV

**Chromatograms:** [https://cdn.origene.com/chromatograms/mk6238\\_e12.zip](https://cdn.origene.com/chromatograms/mk6238_e12.zip)

**Restriction Sites:** SgfI-MluI

**Cloning Scheme:**



**ACCN:** NM\_014742

**ORF Size:** 1875 bp

**OTI Disclaimer:** The molecular sequence of this clone aligns with the gene accession number as a point of reference only. However, individual transcript sequences of the same gene can differ through naturally occurring variations (e.g. polymorphisms), each with its own valid existence. This clone is substantially in agreement with the reference, but a complete review of all prevailing variants is recommended prior to use. [More info](#)

**OTI Annotation:** This clone was engineered to express the complete ORF with an expression tag. Expression varies depending on the nature of the gene.

**Components:** The ORF clone is ion-exchange column purified and shipped in a 2D barcoded Matrix tube containing 10ug of transfection-ready, dried plasmid DNA (reconstitute with 100 ul of water).

**Reconstitution Method:**

1. Centrifuge at 5,000xg for 5min.
2. Carefully open the tube and add 100ul of sterile water to dissolve the DNA.
3. Close the tube and incubate for 10 minutes at room temperature.
4. Briefly vortex the tube and then do a quick spin (less than 5000xg) to concentrate the liquid at the bottom.
5. Store the suspended plasmid at -20°C. The DNA is stable for at least one year from date of shipping when stored at -20°C.

**RefSeq:** [NM\\_014742.2](#), [NP\\_055557.1](#)

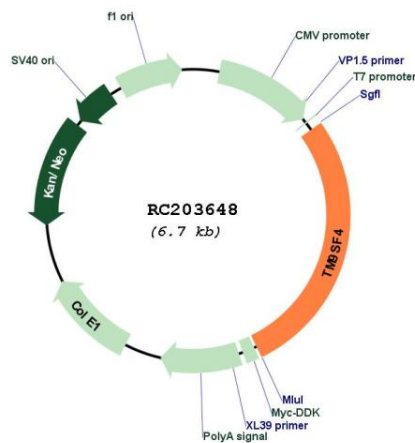
**RefSeq Size:** 3996 bp

**RefSeq ORF:** 1929 bp

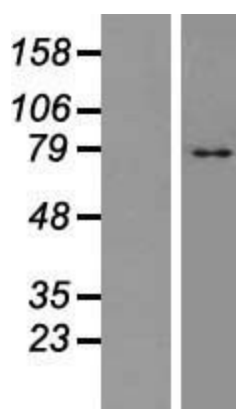
**Locus ID:** 9777  
**UniProt ID:** [Q92544](#)  
**Cytogenetics:** 20q11.21  
**Domains:** EMP70  
**Protein Families:** Transmembrane  
**MW:** 72.54 kDa

**Gene Summary:** Associates with proteins harboring glycine-rich transmembrane domains and ensures their efficient localization to the cell surface (PubMed:25999474). Regulates the assembly and activity of V-ATPase in colon cancer cells via its interaction with V-type proton ATPase subunit H (ATP6V1H) and contributes to V-ATPase-mediated pH alterations in cancer cells which play an important role in drug resistance and invasiveness of colon cancer cells (PubMed:25659576). Plays an important role in an atypical phagocytic activity of metastatic melanoma cells called cannibalism and is involved in the pH regulation of the intracellular vesicles in tumor cells (PubMed:19893578).[UniProtKB/Swiss-Prot Function]

### Product images:



Circular map for RC203648



Western blot validation of overexpression lysate (Cat# [LY415060]) using anti-DDK antibody (Cat# [TA50011-100]). Left: Cell lysates from untransfected HEK293T cells; Right: Cell lysates from HEK293T cells transfected with RC203648 using transfection reagent MegaTran 2.0 (Cat# [TT210002]).