

Product datasheet for **RC203639**

RBM12 (NM_152838) Human Tagged ORF Clone

Product data:

Product Type:	Expression Plasmids
Product Name:	RBM12 (NM_152838) Human Tagged ORF Clone
Tag:	Myc-DDK
Symbol:	RBM12
Synonyms:	HRIHFB2091; SCZD19; SWAN
Mammalian Cell Selection:	Neomycin
Vector:	pCMV6-Entry (PS100001)
E. coli Selection:	Kanamycin (25 ug/mL)



[View online »](#)

ORF Nucleotide
Sequence:

>RC203639 ORF sequence
Red=Cloning site Blue=ORF Green=Tags(s)

TTTTGTAATACGACTCACTATAGGGCGGCCGGAATTCGTCGACTGGATCCGGTACCGAGGAGATCTGCC
GCCGCGATCGCC

ATGGCTGTGGTCATCCGTTTGAAGGTCTCCCAATTGTGGCGGGGACCATGGACATTCGCCACTTCTTCT
CTGGATTGACCATTCCTGATGGGGCGTGCATATTGTAGGGGGTGAAGTGGTGAAGGCTTTCATCGTTTT
TGCCACTGATGAAGATGCAAGGCTTGGTATGATGCGCACAGGTGGTACAATTAAGGGTCAAAGTAAACA
CTATTGTTGAGTAGTAAAACGGAATGCAGAATATGATTGAAGTGAAGTGAAGGCTTTCGAACTGCCA
ACTTAGATATACCACCAGCAAATGCCAGTAGATCAGGACCACCACCTAGCTCAGGAATGAGTAGCAGGGT
AAACTTGCCACAACAGTATCCAACCTTAATAATCCATCACCCAGTGTAGTTACTGCCACCACCTTCTGTT
CATGAAAGCAACAAAACATACAGACATTTCCACAGCCAGCGTAGGAACAGCTCCTCAAATATGGGGG
CTTCTTTGGGAGCCCAACGTTTAGCTCAACTGTTCCAAGCACAGCTCTCCAATGAACACAGTCCCGCC
GCCACCAATTCCTCAATTCAGCGATGCCATCTCTGCCACCAATGCCATCCATTCACCAATTCAGTT
CCTCTCCAGTACCTACATTGCCTCCTGTGCCTCCTGTGCCCCGATTCCCCCAAGTTCCTCTGTGCCAC
CCATGACCCCACTGCCACCCATGTCCGGCATGCCGCCCTTGAATCCGCCACCTGTGGCACCTCTACCTGC
TGGAAATGAATGGCTCTGGAGCACCTATGAATTTGAAACAATAATCTGAATCCTATGTTTCTTGGTCCGTTG
AATCCTGTTAACCTATCCAGATGAAGTCTCAGAGCAGTGTGAAGCCACTCCCATCAACCTGATGATC
TGATGTGAGTGTGCATGGAATGCCCTTTCTGCAATGGAAAATGATGTGAGAGATTTTTTTCATGGGCT
CCGTGTTGATGCAGTGCATTTGTTGAAAGATCATGTAGGTCGAAATAATGGGAATGGATTGGTTAAGTTT
CTCTCCCTCAAGATACATTTGAAGCTTTGAAACGAAACAGAATGCTGATGATTCACGCTATGTGGAAG
TTAGCCCTGCCACAGAAAGACAGTGGTGTGCTGCTGGAGCCATATCACTTTTAAAGCAAAAATATGGGACC
TTCTGGACAAAACATCCCTCCTCAGACACTTCCAGGTCAAATCGCCAGTGGGCAGAAAAGATCA
AGGTCAAGATCACACATGAGGCTGGTTTTTGTGTTTACTTGAAGGGCTACCATTTGAAGCAGAAAACA
AACATGTCATTGATTTTTTAAAGGCTGGATATTGTGGAAGATAGTATTTATATAGCTTATGGACCCAA
TGGGAAAGCAACTGGCGAAGGCTTTGTAGAGTTCAGAAATGAGGCTGACTATAAGGCTGCTCTGTGTCGT
CATAAACAGTACATGGGCAATCGCTTTATTCAAGTTCATCAATTAAGAAAGGTATGCTAGAAAAGA
TAGATATGATTCGAAAAGACTGCAGAACTTCAGCTATGACCAGAGGGAAATGATACTAAATCCAGAGGG
GGATGTCAACTCTGCCAAAGTCTGTGCCACATAACAAAATATCCATTACAGCATTACAAAAGATGGATGTT
CTTCAGTTCCTAGAAGGAATCCAGTGGATGAAAATGCTGTACATGTTCTTGTGATAACAAATGGGCAAG
GTCTAGGACAGGATTGGTTTCAAGTAAAGATGATGCAGTAAGTCTGAACGCTTACACCGTAA
AAAACCTAATGGGAGAGAAGCTTTTGTTCATGTAGTTACCTAGAAGATATGAGAGAGATTGAGAAAAAT
CCCCCTGCCAAGGAAAAAGGGATTAAGATGCCTGTGCCAGGTAATCCTGCAGTTCAGGAATGCCCA
ATGCGGGACTGCCGGTGTGGGACTGCCAGTGCAGGACTTCCCGGTGCAGGCTGCCAGCACAGGACT
GCCTGGTTCAGCAATAACAGTGCAGGACTGCCTGGTGCAGGAAATGCCAGTGCAGGAATACCTAGTGCA
GGAGGTGAAGAGCATGCCTTCTGACTGTAGGATCAAAGGAAGCAATAATGGGCTCCATTTAACTTTC
CTGGTAATTTTGGTGGATCAAATGCCTTTGGGCCACCAATCCCTCCTCCAGGATTAGGAGGCGGGCCCT
TGGTGTGCTAGGCTGGTATGCCTTCAGTTGGAACAGTGGTTTGCCTGGTCTAGGACTGGATGTTCCG
GGTTTTGGAGGTGGACCAACAATTTAAGTGGCCATCGGGATTTGGAGGGGGCCCTCAGAATTTTGAA
ATGGCCCTGGTAGCTTAGGCGGTCCCCGGGTTTGAAGTGGCCCTCCTGGTCTTGAAGTGGCCCTGG
GCATTTGGGTGGGCCACCAGCTTTTGGGCTGGCCCCGGCCCCGGCCCTGGCCCAATCCATATT
GGTGGTCCCCCTGGCTTTGCATCTAGTTCTGGAACCAGGACGACAGTAATTAAGTGCAAAACATGC
CCTTTACTGTGCTATTGATGAGATTTAGATTTCTTTATGGCTATCAAGTAATCCAGGCTCAGTGTG
TTTAAATACAATGAAAAGGTATGCCACAGGTGAAGCCATGGTGGCCTTTGAGTCTCGGGATGAAGCC
ACAGCTGTGCTATTGACTTAAATGACAGGCTATAGGTTCAAGAAAAGTAAAACCTGTATTAGGG

ACGCGTACGCGGCCGCTCGAGCAGAAACTCATCTCAGAAGAGGATCTGGCAGCAAATGATATCCTGGATT
ACAAGGATGACGACGATTAAGGTTTAA

Protein Sequence: >RC203639 protein sequence
 Red=Cloning site Green=Tags(s)

```
MAVVIRLQGLPIVAGTMDIRHFFSGLTIPDGGVHIVGGELGEAFIVFATDEDARLGMMRTGGTIKGSKVT
LLLSSKTEMQNMIELSRRRFETANLDIPPANASRSGPPPSSGMSSRVNLPPTVSNFNPNPSPSVVTATTSV
HESNKNIQTFSTASVGTAPPNMGASFGSPTFSSTVPSTASPMNTVPPPIPPAMPPLPMPSPIPPV
PPPVPTLPPVPPVPPIPPVPSVPPMTPLPPMSGMPPLNPPPVAPLPAGMNGSGAPMNLNNLNPMFLGPL
NPVNPIQMNSQSSVKPLPINPDDL YVSVHGMPFSAMENDVRDFHGLRVDVHLLKDHVGRNNGNGLVKF
LSPQDTFEALKRNRMLMIQRYVEVSPATERQWVAAGGHITFKQNMGPSGQTHPPQTLPRSKSPSGQKRS
RSRSPHEAGFCVYLKGLPFEAENKHVIDFFKKLDIVEDSIYIAYGPNKGATGEGFVEFRNEADYKAALCR
HKQYMGNRFIQVHPITKKGMLEKIDMIRKRLQNF SYDQREMILNPEGDVNSAKVCAHITNIPFSITKMDV
LQFLEGI PV DENAVHVLVDNNGQGLGQALVQFKNEDDARKSERLHRKKNGREAFVHVVTLEDMREIEKN
PPAQGKKGLKMPVPGNPVPGMPNAGLPGVGLPSAGLPGAGLPSTGLPGSAITSAGLPGAGMPSAGIPSA
GGEEHAFLTVGSKEANNGPPFNFGNFGGSNAFGPPIPPPGLGGGAFGDARPGMPVSGNSGLPGLGLDVP
FGGGPNL SGPSGFGGGPQNFNGPGSLGGPPGFGSGPPGLGSAPGHLGGPPAFGPGPGPGPGPGPIHI
GGPPGFASSSGKPGPTVIK VQNMPFTVSIIDEILDFFYGYQVIPGSVCLKYNEKGMPTGEAMVAFESRDEA
TAAVIDLNDRPIGSRKVKLVLG
```

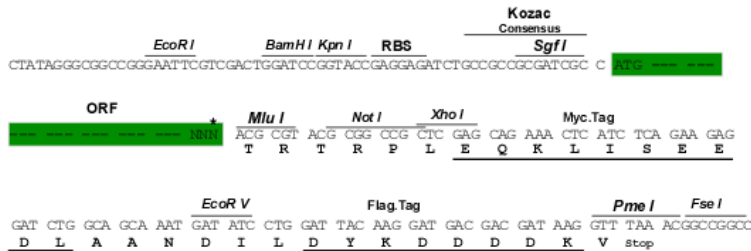
TRTRPLEQKLISEEDLAANDILDYKDDDDKV

Chromatograms: https://cdn.origene.com/chromatograms/mk6566_f04.zip

Restriction Sites: SgfI-MluI

Cloning Scheme:

Cloning sites used for ORF Shuttling:



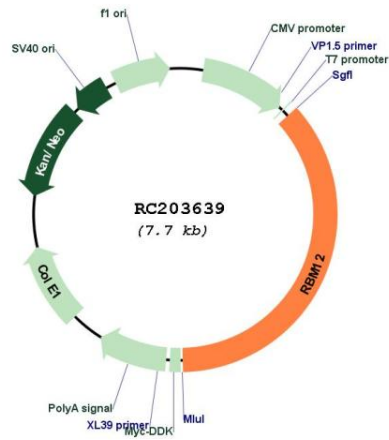
* The last codon before the Stop codon of the ORF

ACCN: NM_152838

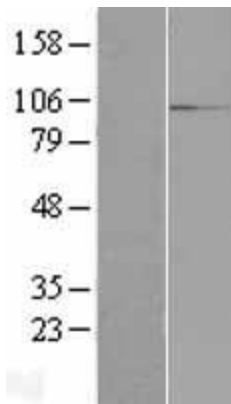
ORF Size: 2796 bp

OTI Disclaimer:	The molecular sequence of this clone aligns with the gene accession number as a point of reference only. However, individual transcript sequences of the same gene can differ through naturally occurring variations (e.g. polymorphisms), each with its own valid existence. This clone is substantially in agreement with the reference, but a complete review of all prevailing variants is recommended prior to use. More info
OTI Annotation:	This clone was engineered to express the complete ORF with an expression tag. Expression varies depending on the nature of the gene.
Components:	The ORF clone is ion-exchange column purified and shipped in a 2D barcoded Matrix tube containing 10ug of transfection-ready, dried plasmid DNA (reconstitute with 100 ul of water).
Reconstitution Method:	<ol style="list-style-type: none"> 1. Centrifuge at 5,000xg for 5min. 2. Carefully open the tube and add 100ul of sterile water to dissolve the DNA. 3. Close the tube and incubate for 10 minutes at room temperature. 4. Briefly vortex the tube and then do a quick spin (less than 5000xg) to concentrate the liquid at the bottom. 5. Store the suspended plasmid at -20°C. The DNA is stable for at least one year from date of shipping when stored at -20°C.
RefSeq:	NM_152838.4
RefSeq Size:	6692 bp
RefSeq ORF:	2799 bp
Locus ID:	10137
UniProt ID:	Q9NTZ6
Cytogenetics:	20q11.22
Domains:	RRM
MW:	97.4 kDa
Gene Summary:	This gene encodes a protein that contains several RNA-binding motifs, potential transmembrane domains, and proline-rich regions. This gene and the gene for copine I overlap at map location 20q11.21. Alternative splicing in the 5' UTR results in four transcript variants. All variants encode the same protein. [provided by RefSeq, Nov 2010]

Product images:



Circular map for RC203639



Western blot validation of overexpression lysate (Cat# [LY416900]) using anti-DDK antibody (Cat# [TA50011-100]). Left: Cell lysates from untransfected HEK293T cells; Right: Cell lysates from HEK293T cells transfected with [RC212116] using transfection reagent MegaTran 2.0 (Cat# [TT210002]).