

## Product datasheet for **RC203636**

### **PAGE5 (NM\_130467) Human Tagged ORF Clone**

#### Product data:

**Product Type:** Expression Plasmids  
**Product Name:** PAGE5 (NM\_130467) Human Tagged ORF Clone  
**Tag:** Myc-DDK  
**Symbol:** PAGE5  
**Synonyms:** CT16; CT16.1; CT16.2; GAGEE1; PAGE-5  
**Mammalian Cell Selection:** Neomycin  
**Vector:** pCMV6-Entry (PS100001)  
**E. coli Selection:** Kanamycin (25 ug/mL)  
**ORF Nucleotide Sequence:** >RC203636 ORF sequence  
**Red=Cloning site Blue=ORF Green=Tags(s)**

TTTTGTAATACGACTCACTATAGGGCGGCCGGAATTCGTCGACTGGATCCGGTACCGAGGAGATCTGCC  
GCC**CGATCGCC**

ATCGAGCGCCATGGGCCGTAATCGTGGCTGGGCTGGAACGAGGGAGGAAGTGAGAGATATGAGTGAGC  
ATGTAACAAGATCCCAATCCTCAGAAAGAGGAAATGACCAAGAGTCTCCAGCCAGTTGGACCTGTGAT  
TGTCAGCAGCCACTGAGGAAAAACGTCAGAAGAGGAACCACCACTGATAATCAGGGTATTGCACCT  
AGTGGGGAGATCAAAAATGAAGGAGCACCTGCTGTTCAAGGGACTGATGTGGAAGCTTTTCAACAGGAAC  
TGGCTCTGCTTAAGATAGAGGATGCACCTGGAGATGGTCTGATGTCAGGGAGGGGACTCTGCCACTTT  
TGATCCCACTAAAGTCTGGAAGCAGGTGAAGGGCAACTA

**ACGCGT**ACGCGGCCGCTCGAGCAGAAACTCATCTCAGAAGAGGATCTGGCAGCAAATGATATCCTGGATT  
ACAAGGATGACGACGATAAGGTTTAA

**Protein Sequence:** >RC203636 protein sequence  
**Red=Cloning site Green=Tags(s)**

MQAPWAGNRGWAGTREEVRDMSEHVTRSQSSERGNDQESSQPVGPVIVQQPTEEKRQEEEPPTDNQGIAP  
SGEIKNEGAPAVQGTDVEAFQQLALLKIEDAPGDGPDVREGTLPTFDPTKVLEAGEGQL

**TR**TRPLEQKLISEEDLAANDILDYKDDDDKV

**Chromatograms:** [https://cdn.origene.com/chromatograms/mk6424\\_g12.zip](https://cdn.origene.com/chromatograms/mk6424_g12.zip)

**Restriction Sites:** Sgfl-MluI



[View online »](#)

Cloning Scheme:



ACCN: NM\_130467

ORF Size: 390 bp

OTI Disclaimer: The molecular sequence of this clone aligns with the gene accession number as a point of reference only. However, individual transcript sequences of the same gene can differ through naturally occurring variations (e.g. polymorphisms), each with its own valid existence. This clone is substantially in agreement with the reference, but a complete review of all prevailing variants is recommended prior to use. [More info](#)

OTI Annotation: This clone was engineered to express the complete ORF with an expression tag. Expression varies depending on the nature of the gene.

Components: The ORF clone is ion-exchange column purified and shipped in a 2D barcoded Matrix tube containing 10ug of transfection-ready, dried plasmid DNA (reconstitute with 100 ul of water).

- Reconstitution Method:
1. Centrifuge at 5,000xg for 5min.
  2. Carefully open the tube and add 100ul of sterile water to dissolve the DNA.
  3. Close the tube and incubate for 10 minutes at room temperature.
  4. Briefly vortex the tube and then do a quick spin (less than 5000xg) to concentrate the liquid at the bottom.
  5. Store the suspended plasmid at -20°C. The DNA is stable for at least one year from date of shipping when stored at -20°C.

RefSeq: [NM\\_130467.5](#)

RefSeq Size: 760 bp

RefSeq ORF: 393 bp

Locus ID: 90737

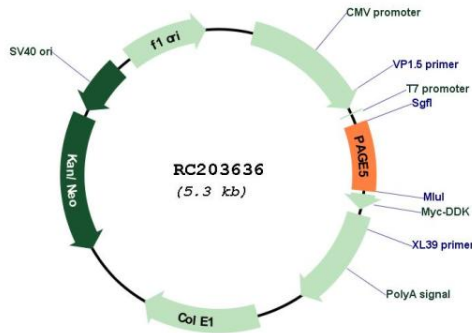
UniProt ID: [Q96GU1](#)

**Cytogenetics:** Xp11.21

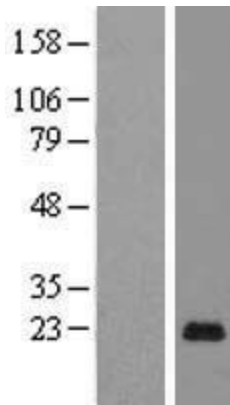
**MW:** 14 kDa

**Gene Summary:** This gene is a member of family of proteins that are expressed in a variety of tumors and in some fetal and reproductive tissues. The encoded protein may protect cells from programmed cell death. Multiple alternatively spliced transcript variants encoding distinct isoforms have been found. [provided by RefSeq, Jan 2015]

**Product images:**



Circular map for RC203636



Western blot validation of overexpression lysate (Cat# [LY408917]) using anti-DDK antibody (Cat# [TA50011-100]). Left: Cell lysates from untransfected HEK293T cells; Right: Cell lysates from HEK293T cells transfected with RC203636 using transfection reagent MegaTran 2.0 (Cat# [TT210002]).



Coomassie blue staining of purified PAGE5 protein (Cat# [TP303636]). The protein was produced from HEK293T cells transfected with PAGE5 cDNA clone (Cat# RC203636) using MegaTran 2.0 (Cat# [TT210002]).