

## Product datasheet for **RC203631**

### CCDC28B (NM\_024296) Human Tagged ORF Clone

#### Product data:

Product Type: Expression Plasmids  
Product Name: CCDC28B (NM\_024296) Human Tagged ORF Clone  
Tag: Myc-DDK  
Symbol: CCDC28B  
Mammalian Cell Selection: Neomycin  
Vector: pCMV6-Entry (PS100001)  
E. coli Selection: Kanamycin (25 ug/mL)  
ORF Nucleotide Sequence: >RC203631 ORF sequence  
Red=Cloning site Blue=ORF Green=Tags(s)

TTTTGTAATACGACTCACTATAGGGCGGCCGGGAATTCGTCGACTGGATCCGGTACCGAGGAGATCTGCC  
GCC**CGATCGCC**

ATGGATGACAAAAAGAAGAAACGGAGTCCCAAGCCCTGCCTGGCCAGCCAGCCAGGCCCCAGGCACAC  
TACGGAGGGTCCCTGTGCTACCAGCCACAGCGGCTCCTTGGCCCTAGGACTTCCATCTGCCATCCCC  
CAAGCAGCGGGCCAAGTCAAGAGAGTAGGCAAGAGAAGTGCCGCCAGTCTGGCTGGAGGTGGAAGC  
GGCTCTGCAGGCACGCCCTGCAGCACTCCTTCTGACCGAGGTGACTGATGTCTATGAGATGGAGGGG  
GACTCTGAACCTGCTCAATGATTTCCACTCTGGCCGGCTGACGGCCTTCGGAAGGAATGCTCCTTGA  
GCAGCTGAGCACGTTCCGGAGATGCAGGAGAAGCTAGCCCGGCTGCACTTCAGCCTGGATGTGTGTGGG  
GAGGAGGAGGACGATGAAGAGGAAGAGGATGGGTCACTGAGGGGCTGCCAGAGGAGCAGAAGAAGACAA  
TGGCTGACCGTAACCTGGACCAGCTGCTTAGCAATCTGGAAGACCTCAGTAATTCTATCCAGAAGCTGCA  
CCTGGCCGAGAACGCCGAGCCTGAGGAGCAGTCCGCTGCC

**ACGGT**ACGCGGCCGCTCGAGCAGAACTCATCTCAGAAGAGGATCTGGCAGCAATGATATCCTGGATT  
ACAAGGATGACGACGATAAGGTTTAA

Protein Sequence: >RC203631 protein sequence  
Red=Cloning site Green=Tags(s)

MDDKKKRSPKPLAQPAQAPGTLRRVPVPTSHSGSLALGLPHLPSPKQRAKFKRVGKEKCRPVLAGGGS  
GSAGTPLQHSFLTEVTDVYEMEGLLNLLNDFHSGRLQAFGKECSFEQLEHVREMQEKLARLHFSLDVCG  
EEEDDEEEEDGVTEGLPEEQKTMADRNLQLLSNLEDLSNSIQKLHLAENAEPEEQSAA

**TR**TRPLEQKLISEEDLAANDILDYKDDDDKV

Chromatograms: [https://cdn.origene.com/chromatograms/mk6429\\_h12.zip](https://cdn.origene.com/chromatograms/mk6429_h12.zip)



[View online »](#)

Restriction Sites: SgfI-MluI

Cloning Scheme:



ACCN: NM\_024296

ORF Size: 600 bp

OTI Disclaimer: The molecular sequence of this clone aligns with the gene accession number as a point of reference only. However, individual transcript sequences of the same gene can differ through naturally occurring variations (e.g. polymorphisms), each with its own valid existence. This clone is substantially in agreement with the reference, but a complete review of all prevailing variants is recommended prior to use. [More info](#)

OTI Annotation: This clone was engineered to express the complete ORF with an expression tag. Expression varies depending on the nature of the gene.

Components: The ORF clone is ion-exchange column purified and shipped in a 2D barcoded Matrix tube containing 10ug of transfection-ready, dried plasmid DNA (reconstitute with 100 ul of water).

- Reconstitution Method:
1. Centrifuge at 5,000xg for 5min.
  2. Carefully open the tube and add 100ul of sterile water to dissolve the DNA.
  3. Close the tube and incubate for 10 minutes at room temperature.
  4. Briefly vortex the tube and then do a quick spin (less than 5000xg) to concentrate the liquid at the bottom.
  5. Store the suspended plasmid at -20°C. The DNA is stable for at least one year from date of shipping when stored at -20°C.

RefSeq: [NM\\_024296.5](#)

RefSeq Size: 1110 bp

RefSeq ORF: 603 bp

Locus ID: 79140

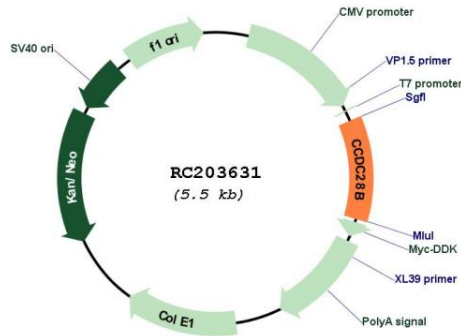
UniProt ID: [Q9BUN5](#)

**Cytogenetics:** 1p35.2

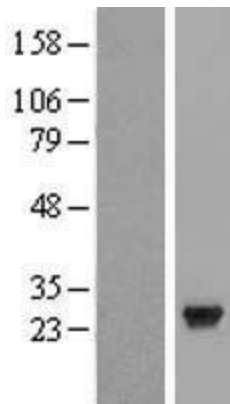
**MW:** 22 kDa

**Gene Summary:** The product of this gene localizes to centrosomes and basal bodies. The protein colocalizes with several proteins associated with Bardet-Biedl syndrome (BBS) and participates in the regulation of cilia development. Alternative splicing results in multiple transcript variants. [provided by RefSeq, Jul 2014]

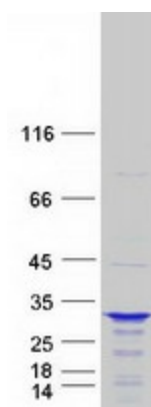
**Product images:**



Circular map for RC203631



Western blot validation of overexpression lysate (Cat# [LY411317]) using anti-DDK antibody (Cat# [TA50011-100]). Left: Cell lysates from untransfected HEK293T cells; Right: Cell lysates from HEK293T cells transfected with RC203631 using transfection reagent MegaTran 2.0 (Cat# [TT210002]).



Coomassie blue staining of purified CCDC28B protein (Cat# [TP303631]). The protein was produced from HEK293T cells transfected with CCDC28B cDNA clone (Cat# RC203631) using MegaTran 2.0 (Cat# [TT210002]).