

Product datasheet for RC203628

SLC39A1 (NM_014437) Human Tagged ORF Clone

Product data:

Product Type:	Expression Plasmids
Product Name:	SLC39A1 (NM_014437) Human Tagged ORF Clone
Tag:	Myc-DDK
Symbol:	SLC39A1
Synonyms:	ZIP1; ZIRTL
Mammalian Cell Selection:	Neomycin
Vector:	pCMV6-Entry (PS100001)
E. coli Selection:	Kanamycin (25 ug/mL)
ORF Nucleotide Sequence:	>RC203628 ORF sequence Red=Cloning site Blue=ORF Green=Tags(s)

TTTTGTAATACGACTCACTATAGGGCGGCCGGAATTCGTCGACTGGATCCGGTACCGAGGAGATCTGCC
GCC**CGGATCGCC**

ATGGGGCCCTGGGGAGAGCCAGAGCTCCTGGTGTGGCGCCCCGAGGCGGTAGCTTCAGAGCCTCCAGTGC
CTGTGGGGCTGGAGGTGAAGTTGGGGCCCTGGTGTCTGTGGTGTCTCACCTCTGCAGCCTGGT
GCCATCTGTGTCTGCGCCGGCCAGGAGCTAACCATGAAGGCTCAGCTCCCGCCAGAAAGCCCTGAGC
CTAGTAAGCTGTTTCGCGGGGGCGTCTTTTGGCCACTTGTCTCCTGGACCTGCTGCCTGACTACCTGG
CTGCCATAGATGAGGCCCTGGCAGCCTTGACGTGACGCTCCAGTCCCCTGCAAGAGTTCATCCTGGC
CATGGGCTTCTTCTGGTCTGGTATGGAGCAGATCACACTGGCTTACAAGGAGCAGTCAGGGCCGTCA
CCTCTGGAGAAACAAGGGCTCTGCTGGGAACAGTGAATGGTGGGCCGAGCATTGGCATGATGGGCCAG
GGTCCCACAGGCGAGTGGAGCCCCAGCAACCCCTCAGCCTTGGCTGCCTGTGTACTGGTGTCTCCCT
GGCCCTCCACTCCGTGTTTCGAGGGGCTGGCGGTAGGGCTGCAGCGAGACCGGGCTCGGGCCATGGAGCTG
TGCTGGCTTTGCTGCTCCACAAGGGCATCCTGGCTGTGACGCTGTCCCTGCGGCTGTTGCAGAGCCACC
TTAGGGCACAGGTGGTGGCTGGCTGTGGGATCCTTCTCATGCATGACACCTTAGGCATCGGGCTGGG
TGCAGCTCTGGCAGAGTCGGCAGGACCTTGCACCAGCTGGCCAGTCTGTGCTAGAGGGCATGGCAGCT
GGCACCTTCTCTATATCACCTTCTGGAAATCCTGCCCCAGGAGCTGGCCAGTCTGAGCAAAGGATCC
TCAAGGTATTCTGCTCCTAGCAGGCTTTGCCCTGCTCACTGGCCTGCTCTTCATCCAAATC

ACGCGTACGCGGCCGCTCGAGCAGAAACTCATCTCAGAAGAGGATCTGGCAGCAAATGATATCCTGGATT
ACAAGGATGACGACGATAAGGTTTAA



[View online »](#)

Protein Sequence: >RC203628 protein sequence
 Red=Cloning site Green=Tags(s)

MGPWGEPELLVWRPEAVASEPPVPVGLVLEVKLGALVLLLVLTLLCSLVPICVLRPPGANHEGSASRQKALS
 LVSCFAGGVFLATCLLDLLPDYLAIDEALAALHVTLQFPLQEFILAMGFFLVLMVEQITLAYKEQSGPS
 PLEETRALLGTVNGGPQHWHDGPGVPOASGAPATPSALRACVLVFSALHHSVFEGLAVGLQRDRAMEL
 CLALLLHKGILAVSLSLRLLQSHLRAQVVAGCGILFSCMTPLGIGLGAALAESAGPLHQLAQSVLEGMAA
 GTFLYITFLEILPQELASSEQRILKVIILLLAGFALLTGLLFIQI

TRTRPLEQKLISEEDLAANDILDYKDDDDKV

Chromatograms: https://cdn.origene.com/chromatograms/mk6424_c01.zip

Restriction Sites: SgfI-MluI

Cloning Scheme:



ACCN: NM_014437

ORF Size: 972 bp

OTI Disclaimer: The molecular sequence of this clone aligns with the gene accession number as a point of reference only. However, individual transcript sequences of the same gene can differ through naturally occurring variations (e.g. polymorphisms), each with its own valid existence. This clone is substantially in agreement with the reference, but a complete review of all prevailing variants is recommended prior to use. [More info](#)

OTI Annotation: This clone was engineered to express the complete ORF with an expression tag. Expression varies depending on the nature of the gene.

Components: The ORF clone is ion-exchange column purified and shipped in a 2D barcoded Matrix tube containing 10ug of transfection-ready, dried plasmid DNA (reconstitute with 100 ul of water).

Reconstitution Method:

1. Centrifuge at 5,000xg for 5min.
2. Carefully open the tube and add 100ul of sterile water to dissolve the DNA.
3. Close the tube and incubate for 10 minutes at room temperature.
4. Briefly vortex the tube and then do a quick spin (less than 5000xg) to concentrate the liquid at the bottom.
5. Store the suspended plasmid at -20°C. The DNA is stable for at least one year from date of shipping when stored at -20°C.

RefSeq: [NM_014437.5](#)

RefSeq Size: 2462 bp

RefSeq ORF: 975 bp

Locus ID: 27173

UniProt ID: [Q9NY26](#)

Cytogenetics: 1q21.3

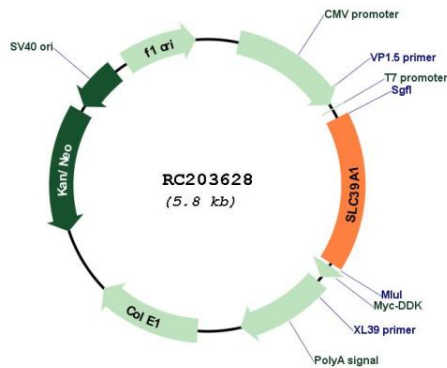
Domains: Zip

Protein Families: Transmembrane

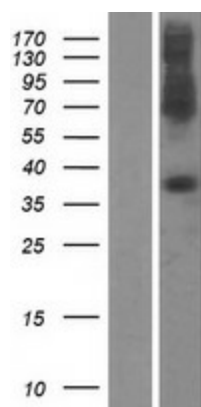
MW: 34.2 kDa

Gene Summary: This gene encodes a member of the zinc-iron permease family. The encoded protein is localized to the cell membrane and acts as a zinc uptake transporter. This gene has been linked to prostate cancer, breast cancer, and Alzheimer's disease. Alternative splicing results in multiple transcript variants. [provided by RefSeq, Dec 2012]

Product images:



Circular map for RC203628



Western blot validation of overexpression lysate (Cat# [LY415285]) using anti-DDK antibody (Cat# [TA50011-100]). Left: Cell lysates from untransfected HEK293T cells; Right: Cell lysates from HEK293T cells transfected with RC203628 using transfection reagent MegaTran 2.0 (Cat# [TT210002]).