

Product datasheet for RC203625L1

BSCL2 (NM_032667) Human Tagged Lenti ORF Clone

Product data:

Product Type:	Expression Plasmids
Product Name:	BSCL2 (NM_032667) Human Tagged Lenti ORF Clone
Tag:	Myc-DDK
Symbol:	BSCL2
Synonyms:	GNG3LG; HMN5; HMN5C; PELD; SPG17
Mammalian Cell Selection:	None
Vector:	pLenti-C-Myc-DDK (PS100064)
E. coli Selection:	Chloramphenicol (34 ug/mL)
ORF Nucleotide Sequence:	The ORF insert of this clone is exactly the same as(RC203625).
Restriction Sites:	SgfI-MluI
Cloning Scheme:	

Cloning sites used for ORF Shuttling:



* The last codon before the Stop codon of the ORF.

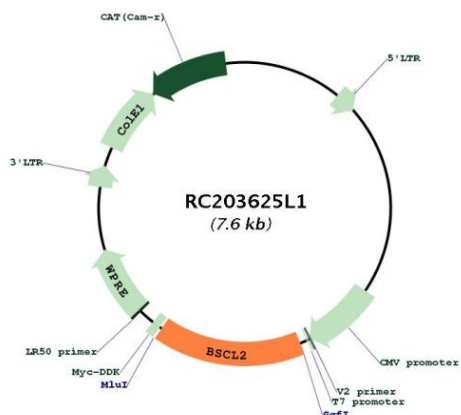
ACCN:	NM_032667
ORF Size:	1200 bp



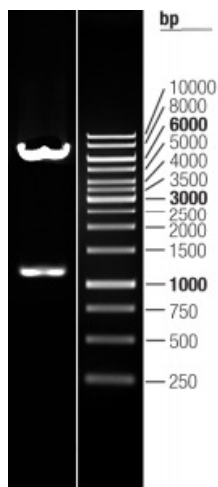
[View online »](#)

OTI Disclaimer:	The molecular sequence of this clone aligns with the gene accession number as a point of reference only. However, individual transcript sequences of the same gene can differ through naturally occurring variations (e.g. polymorphisms), each with its own valid existence. This clone is substantially in agreement with the reference, but a complete review of all prevailing variants is recommended prior to use. More info
OTI Annotation:	This clone was engineered to express the complete ORF with an expression tag. Expression varies depending on the nature of the gene.
Components:	The ORF clone is ion-exchange column purified and shipped in a 2D barcoded Matrix tube containing 10ug of transfection-ready, dried plasmid DNA (reconstitute with 100 ul of water).
Reconstitution Method:	<ol style="list-style-type: none">1. Centrifuge at 5,000xg for 5min.2. Carefully open the tube and add 100ul of sterile water to dissolve the DNA.3. Close the tube and incubate for 10 minutes at room temperature.4. Briefly vortex the tube and then do a quick spin (less than 5000xg) to concentrate the liquid at the bottom.5. Store the suspended plasmid at -20°C. The DNA is stable for at least one year from date of shipping when stored at -20°C.
RefSeq:	NM_032667.4
RefSeq Size:	1664 bp
RefSeq ORF:	1197 bp
Locus ID:	26580
UniProt ID:	Q96G97
Cytogenetics:	11q12.3
Protein Families:	Druggable Genome, Transmembrane
MW:	44.2 kDa
Gene Summary:	This gene encodes the multi-pass transmembrane protein protein seipin. This protein localizes to the endoplasmic reticulum and may be important for lipid droplet morphology. Mutations in this gene have been associated with congenital generalized lipodystrophy type 2 or Berardinelli-Seip syndrome, a rare autosomal recessive disease characterized by a near absence of adipose tissue and severe insulin resistance. Alternatively spliced transcript variants encoding different isoforms have been found for this gene. Naturally occurring read-through transcription occurs between this locus and the neighboring locus HNRNPUL2 (heterogeneous nuclear ribonucleoprotein U-like 2).[provided by RefSeq, Mar 2011]

Product images:



Circular map for RC203625L1



Double digestion of RC203625L1 using SgfI and MluI