

Product datasheet for **RC203623**

XRCC6BP1 (ATP23) (NM_033276) Human Tagged ORF Clone

Product data:

Product Type:	Expression Plasmids
Product Name:	XRCC6BP1 (ATP23) (NM_033276) Human Tagged ORF Clone
Tag:	Myc-DDK
Symbol:	XRCC6BP1
Synonyms:	KUB3; XRCC6BP1
Mammalian Cell Selection:	Neomycin
Vector:	pCMV6-Entry (PS100001)
E. coli Selection:	Kanamycin (25 ug/mL)
ORF Nucleotide Sequence:	>RC203623 ORF sequence Red=Cloning site Blue=ORF Green=Tags(s)

TTTGTAAATACGACTCACTATAGGGCGGCCGGAATTCGTCGACTGGATCCGGTACCGAGGAGATCTGCC
 GCC**CGATCGCC**

ATGGCGGGAGCTCCGGACGAGCGCCGGCGGGCCCCGCGGCAGGGGAGCAGCTGCAGCAGCAACACGTCT
 CTTGCCAGGTCTTCCCCGAGCGTCTGGCCAGGGGAATCCCCAGCAAGGGTTCTTCTCCAGCTTCTTCAC
 CAGCAACCAGAAGTGCCAGCTTAGGCTCCTGAAGACGCTGGAGACAAATCCATATGTCAAACCTTCTGCTT
 GATGCTATGAAACACTCAGGTTGTGCTGTTAACAAGATAGACACTTTTCTTGCGAAGACTGTAATGGAA
 ATGTCAGTGGAGTTTTGATGCTTCAACATCTCAGATAGTTTTGTGCCAGAATAATATCCATAATCAGGC
 CCATATGAACAGAGTGGTCACACAGAGCTTATTCATGCATTTGATCATTGTCTGCGCCATGTCTGACTGG
 TTCACCAACATCAGACATTTGGCGTGCTCAGAGGTTTCGAGCTGCTAACCTTAGTGAGAGACTGCTCACTTG
 TCAATGAAATATTCAGGTTACATTTTGGATTAACAACACCACCAGACTTGTGTGCGAGACAGAGCCAC
 TCTTTCTATCCTGGCTGTTAGGAATATCAGCAAAGAAGTAGCTAAAAAGGCTGTTGATGAAGTTTTGAA
 TCTTGTTCATGACCATGAACCTTTTGAAGGATCCACATAACAAGACTTATGCAAGATATGCTCACA
 GAGACTTTGAAAACCGTGATCGGTATTATTCAAATATA

ACGCGTACGCGGCCGCTCGAGCAGAACTCATCTCAGAAGAGGATCTGGCAGCAAATGATATCCTGGATT
 ACAAGGATGACGACGATAAGGTTTAA


[View online »](#)

Protein Sequence: >RC203623 protein sequence
 Red=Cloning site Green=Tags(s)

MAGAPDERRRGPAAGEQLQQHVSCQVFERLAQGNPQQGFFSSFFTSTNQKCQLRLKLTLETNPYVKLLL
 DAMKHSGCAVNKDRHFSCEDCNGNVSGGFDASTSQIVLCQNNIHNQAHMNRVVTHELIIHAFDHCRAHVDW
 FTNIRHLACSEVRAANLSGDCSLVNEIFRLHFGLKQHHQTCVRDRATLSILAVRNISKEVAKKAVDEVFE
 SCFNDHEPFGRIPHNKTYARYAHRDFENRDYYNSNI

TRTRPLEQKLISEEDLAANDILDYKDDDDKV

Chromatograms: https://cdn.origene.com/chromatograms/mk6146_f12.zip

Restriction Sites: SgfI-MluI

Cloning Scheme:



ACCN: NM_033276

ORF Size: 738 bp

OTI Disclaimer: The molecular sequence of this clone aligns with the gene accession number as a point of reference only. However, individual transcript sequences of the same gene can differ through naturally occurring variations (e.g. polymorphisms), each with its own valid existence. This clone is substantially in agreement with the reference, but a complete review of all prevailing variants is recommended prior to use. [More info](#)

OTI Annotation: This clone was engineered to express the complete ORF with an expression tag. Expression varies depending on the nature of the gene.

Components: The ORF clone is ion-exchange column purified and shipped in a 2D barcoded Matrix tube containing 10ug of transfection-ready, dried plasmid DNA (reconstitute with 100 ul of water).

Reconstitution Method:

1. Centrifuge at 5,000xg for 5min.
2. Carefully open the tube and add 100ul of sterile water to dissolve the DNA.
3. Close the tube and incubate for 10 minutes at room temperature.
4. Briefly vortex the tube and then do a quick spin (less than 5000xg) to concentrate the liquid at the bottom.
5. Store the suspended plasmid at -20°C. The DNA is stable for at least one year from date of shipping when stored at -20°C.

Note: Plasmids are not sterile. For experiments where strict sterility is required, filtration with 0.22um filter is required.

RefSeq: [NM_033276.4](#)

RefSeq Size: 1182 bp

RefSeq ORF: 741 bp

Locus ID: 91419

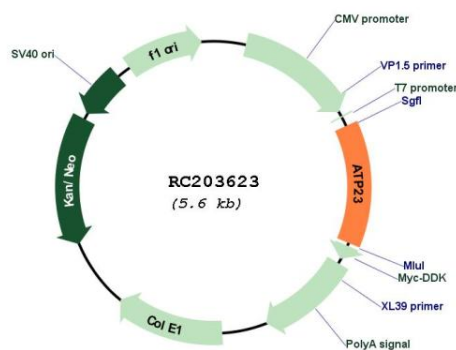
UniProt ID: [Q9Y6H3](#)

Cytogenetics: 12q14.1

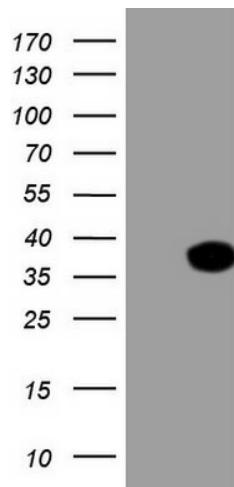
MW: 28.1 kDa

Gene Summary: The protein encoded by this gene is amplified in glioblastomas and interacts with the DNA binding subunit of DNA-dependent protein kinase. This kinase is involved in double-strand break repair (DSB), and higher expression of the encoded protein increases the efficiency of DSB. In addition, comparison to orthologous proteins strongly suggests that this protein is a metalloprotease important in the biosynthesis of mitochondrial ATPase. Several transcript variants encoding different isoforms have been found for this gene. [provided by RefSeq, Feb 2016]

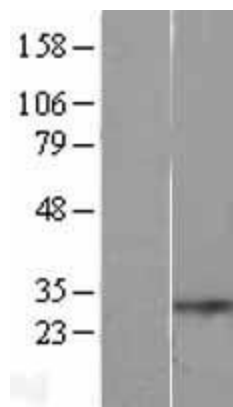
Product images:



Circular map for RC203623



HEK293T cells were transfected with the pCMV6-ENTRY control (Cat# [PS100001], Left lane) or pCMV6-ENTRY XRCC6BP1 (Cat# RC203623, Right lane) cDNA for 48 hrs and lysed. Equivalent amounts of cell lysates (5 ug per lane) were separated by SDS-PAGE and immunoblotted with anti-XRCC6BP1 (Cat# [TA808393])(1:500). Positive lysates [LY403240] (100ug) and [LC403240] (20ug) can be purchased separately from OriGene.



Western blot validation of overexpression lysate (Cat# [LY403240]) using anti-DDK antibody (Cat# [TA50011-100]). Left: Cell lysates from untransfected HEK293T cells; Right: Cell lysates from HEK293T cells transfected with RC203623 using transfection reagent MegaTran 2.0 (Cat# [TT210002]).