

Product datasheet for RC203622

SREB3 (GPR173) (NM_018969) Human Tagged ORF Clone

Product data:

Product Type:	Expression Plasmids
Product Name:	SREB3 (GPR173) (NM_018969) Human Tagged ORF Clone
Tag:	Myc-DDK
Symbol:	SREB3
Synonyms:	SREB3
Mammalian Cell Selection:	Neomycin
Vector:	pCMV6-Entry (PS100001)
E. coli Selection:	Kanamycin (25 ug/mL)
ORF Nucleotide Sequence:	>RC203622 ORF sequence Red=Cloning site Blue=ORF Green=Tags(s)

TTTTGTAATACGACTCACTATAGGGCGGCCGGAATTCGTCGACTGGATCCGGTACCGAGGAGATCTGCC
GCC**CGATCGCC**

ATGGCCAACACTACCGGAGAGCCTGAGGAGGTGAGCGGCGCTCTGTCCCAACGTCGGCATCAGCTTATG
TGAAGCTGGTACTGCTAGGACTGATTATGTGCGTGAGCCTGGCGGTAACGCCATCTTGTCCCTGCTGGT
GCTCAAGGAGCGTGCCCTGCACAAGGCTCCTTACTACTTCTGCTGGACCTGTGCCTGGCCGATGGCATA
CGCTCTGCCGTCTGCTTCCCTTTGTGCTGGCTTCTGTGCGCCACGGCTTTCATGGACCTTCAGTGCAC
TCAGCTGCAAGATTGTGGCCTTTATGGCCGTGCTTTTTGCTTCCATGCGGCCTTCATGCTGTTCTGCAT
CAGCGTACCCGCTACATGGCCATCGCCACCACCGCTTCTACGCCAAGCGCATGACACTCTGGACATGC
GCGGCTGTCTATGCTGGCCTGGACCCTGTCTGTGGCCATGGCCTTCCACCTGTCTTTGACGTGGGCA
CCTACAAGTTTATTCGGGAGGAGGACCAGTGCATCTTTGAGCATCGCTACTTCAAGGCCAATGACACGCT
GGGCTTCATGCTTATGTTGGCTGTGCTCATGGCAGCTACCCATGCTGTCTACGGCAAGCTGCTCCTCTTC
GAGTATCGTCACCGCAAGATGAAGCCAGTGCAGATGGTGCCAGCCATCAGCCAGAAGTGGACATTCATG
GTCCCGGGGCCACCGCCAGGCTGCTGCCAAGTGGATCGCCGGCTTTGGCCGTGGGCCATGCCACCAAC
CCTGCTGGGTATCCGGCAGAATGGGCATGCAGCCAGCCGGCGGCTACTGGCATGGACGAGGTCAAGGGT
GAAAAGCAGCTGGGCCGATGTTCTACGGGATCACACTGCTCTTTCTGCTCCTTGGTCAACCTACATCG
TGGCCTGCTACTGGCGAGTGTGTTGTGAAAGCCTGTGCTGTGCCCCACCGCTACCTGGCCACTGCTGTTG
GATGAGCTTCGCCAGGCTGCCGTCACCAAAATTGCTGCTTCCCTGCTCAACAAGGACCTCAAGAAGTGC
CTGAGGACTCATGCCCTGCTGGGACACAGGAGTGCCCGGCTCCAGAGAACCCTACTGTGTTCATG

ACGCGTACGCGGCCGCTCGAGCAGAAACTCATCTCAGAAGAGGATCTGGCAGCAATGATATCCTGGATT
ACAAGGATGACGACGATAAGGTTAA



[View online »](#)

Protein Sequence: >RC203622 protein sequence
Red=Cloning site Green=Tags(s)

MANTTGEPEEVSGALSPPSASAYVKLVLLGLIMCVSLAGNAILSLLVLKERALHKAPYYFLLDLCLADGI
 RSAVCFPFVLASVRHGSSWTFALSCKIVAFMAVLCFHAAFMLFCISVTRYMAIAHHRFYAKRMTLWTC
 AAVICMAWTLVAMAFPPVFDVGTYYKFIREDQCIFEHRYFKANDTLGFMLMLAVLMAATHAVYKLLLF
 EYRHRKMKPVQMPVAISQNWTFHGPATGQAAANWIAGFGRGMPPTLLGIRQNGHAASRRLGMDEVKGG
 EKQLGRMFYAITLLFLLWSPYIVACYWRVYVKACAVPHRYLATAVWMSFAQAAVNPVCFLLNKDLKCC
 LRTHAPCWGTGGAPAPREPYCVM

TRTRPLEQKLISEEDLAANDILDYKDDDDKVV

Chromatograms: https://cdn.origene.com/chromatograms/mk6247_h05.zip

Restriction Sites: SgfI-MluI

Cloning Scheme:



ACCN: NM_018969

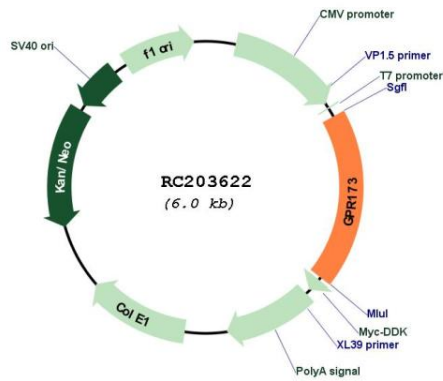
ORF Size: 1119 bp

OTI Disclaimer: Due to the inherent nature of this plasmid, standard methods to replicate additional amounts of DNA in E. coli are highly likely to result in mutations and/or rearrangements. Therefore, OriGene does not guarantee the capability to replicate this plasmid DNA. Additional amounts of DNA can be purchased from OriGene with batch-specific, full-sequence verification at a reduced cost. Please contact our customer care team at custsupport@origene.com or by calling 301.340.3188 option 3 for pricing and delivery.

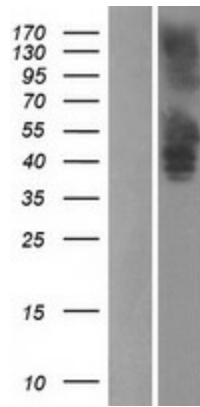
The molecular sequence of this clone aligns with the gene accession number as a point of reference only. However, individual transcript sequences of the same gene can differ through naturally occurring variations (e.g. polymorphisms), each with its own valid existence. This clone is substantially in agreement with the reference, but a complete review of all prevailing variants is recommended prior to use. [More info](#)

OTI Annotation:	This clone was engineered to express the complete ORF with an expression tag. Expression varies depending on the nature of the gene.
Components:	The ORF clone is ion-exchange column purified and shipped in a 2D barcoded Matrix tube containing 10ug of transfection-ready, dried plasmid DNA (reconstitute with 100 ul of water).
Reconstitution Method:	<ol style="list-style-type: none">1. Centrifuge at 5,000xg for 5min.2. Carefully open the tube and add 100ul of sterile water to dissolve the DNA.3. Close the tube and incubate for 10 minutes at room temperature.4. Briefly vortex the tube and then do a quick spin (less than 5000xg) to concentrate the liquid at the bottom.5. Store the suspended plasmid at -20°C. The DNA is stable for at least one year from date of shipping when stored at -20°C.
RefSeq:	<u>NM_018969.3</u> , <u>NP_061842.1</u>
RefSeq Size:	4265 bp
RefSeq ORF:	1122 bp
Locus ID:	54328
UniProt ID:	<u>Q9NS66</u>
Cytogenetics:	Xp11.22
Domains:	7tm_1
Protein Families:	Druggable Genome, GPCR, Transmembrane
MW:	41.5 kDa
Gene Summary:	This gene encodes a member of the G-protein coupled receptor 1 family. This protein contains 7 transmembrane domains and conserved cysteine residues. [provided by RefSeq, Nov 2009]

Product images:



Circular map for RC203622



Western blot validation of overexpression lysate (Cat# [LY412856]) using anti-DDK antibody (Cat# [TA50011-100]). Left: Cell lysates from untransfected HEK293T cells; Right: Cell lysates from HEK293T cells transfected with RC203622 using transfection reagent MegaTran 2.0 (Cat# [TT210002]).