

## Product datasheet for **RC203620**

### LTV1 (NM\_032860) Human Tagged ORF Clone

#### Product data:

Product Type:	Expression Plasmids
Product Name:	LTV1 (NM_032860) Human Tagged ORF Clone
Tag:	Myc-DDK
Symbol:	LTV1
Synonyms:	C6orf93; dj468K18.4
Mammalian Cell Selection:	Neomycin
Vector:	pCMV6-Entry (PS100001)
E. coli Selection:	Kanamycin (25 ug/mL)



[View online »](#)

**ORF Nucleotide Sequence:**

>RC203620 ORF sequence  
 Red=Cloning site Blue=ORF Green=Tags(s)

TTTTGTAATACGACTCACTATAGGGCGGCCGGAATTCGTCGACTGGATCCGGTACCGAGGAGATCTGCC  
 GCC**CGGATCGCC**

ATGCCTCACAGGAAGAAAAGCCCTTTATAGAGAAGAAGAAAGCTGTGTCTTTTCACTTGGTCCACCGGA  
 GCCAACGAGATCCTTTAGCAGCAGATGAGAGTGCACCCAGAGGGTTCTATTGCCACACAAAAATAGA  
 CAATGAAGAAAGGCGAGCAGAACAGAGGAAGTATGGAGTGTCTTTGATGACGACTATGACTACCTGCAG  
 CACCTGAAGAAACCATCTGGGCCTTCAGAGCTTATCCCTCAAGTACCTCAGTGACACACACAGGAGAG  
 AGGAGAAAAGAAGAACGCTAGTAATTCAGCACTGGAATTAAGTTGCCTTCATCAGTGTGGCTTCAGA  
 GTTTGAGGAAGATGTTGGATTGTTAAATAAAGCAGCTCCAGTTTCAGGACCTCGACTGGATTTTGTCT  
 GACATTGTTGCAGCTCTGATGATGATTTTACTTTGATGATCCAGATAATCTGCTTGAGGATGACTTTA  
 TTCTTCAGGCCAATAAGGCAACAGGAGAGGAAGAGGGAATGGATATACAGAAATCTGAGAATGAAGATGA  
 CAGCGAGTGGGAAGATGTGGATGATGAGAAGGGAGATAGCAATGATGACTATGACTCTGCAGGCCTATTG  
 TCAGATGAAGACTGTATGTCTGTGCCCGAAAACTCACAGAGCTATAGCAGATCACTTGTCTGGAGTG  
 AGGAAACAAAGAGTTCGCTTCACGGAGTATTCGATGACTTCCTCAGTCATGAGGAGAAATGAACAGCTGAC  
 CCTACATGATGAGAGTTTGAGAAGTTTATGAGCAATATGATGATGATAAATTGGAGCTCTGGATAAT  
 GCAGAATTGGAAGTTCTATTCAAGTGGACAGCAATCGCTTACAGGAAGTTTGAATGACTACTATAAAG  
 AGAAGGCAGAGAATTGTGTAATAATTGAATACCCTTGAACCCTTGGAGGATCAAGACCTGCCAATGAATGA  
 GCTTGATGAGTCTGAGGAGGAAGAAATGATTACTGTAGTCCTTGAAGAAGCCAAAGAGAAGTGGGATTGT  
 GAATCTATTTGTAGTACATACTCAAATTTATATAACCATCCACAGCTTATCAAGTATCAACCAAAGCCCA  
 AACAAATTCGAATATCTTCTAAAACAGGAATACCTCTCAATGTCTTACCAAAGAAAAGGACTCACAGCAA  
 GCAAACTGAAAGAATACAGATGATTAATGGCAGTGATCTTCTAAAGTATCAACTCAGCCACGTTCTAAA  
 AATGAAAGCAAAGAAGATAAAGAGCAAGAAAGCAAGCTATAAAGAAAGAGCGCAAGGAACGAAGAGTGG  
 AGAAGAAAGCTAACAAATTAGCATTTAAACTGGAGAAAAGAGGCAAGAAAAGAGCTGCTGAACTTGAA  
 GAAGAATGTTGAGGGTCTAAAGCTA

**ACGCGT**ACGCGGCCGCTCGAGCAGAAACTCATCTCAGAAGAGGATCTGGCAGCAATGATATCCTGGATT  
 ACAAGGATGACGACGATAAGGTTTAA

**Protein Sequence:**

>RC203620 protein sequence  
 Red=Cloning site Green=Tags(s)

MPHRKKKPFIEKKKAVSFHLVHRSQRDPLAADESAPQRVLLPTQKIDNEERRAEQRKYGVFFDDDDYDYLQ  
 HLKEPSGPELIPSSSTFSAHNRREEKEETLVIPSTGIKLPSSVFASEFEEDVGLLNKAAPVSGPRLDFDP  
 DIVAALDDDFDFDDPDNLEDDF ILQANKATGEEEGMDIQKSENEDDSEWEDVDDEKGDSDNDYDSAGLL  
 SDEDCMSVPGKTHRAIADHLFWSEETKSRFTEYSMTSSVMRRNEQLTLHDERFEKFEYQYDDDEIGALDN  
 AELEGSIQVDSNRLQEVLNDYYKEAENCVKLNTLEPLEDQDLPNLEDESEEEEMITVVLLEEAKWKDC  
 ESICSTYSNLYNHPQLIKYQPKPKQIRISSKTGIPLNVLPKKGLTAKQTERIQMINGSDLPKVSTQPRSK  
 NESKEDKRARKQAIKEERKERRVEKKANKLAFKLEKRRQEKELLNLKKNVEGLKL

**TR**TRPLEQKLISEEDLAANDILDYKDDDDKV

**Chromatograms:**

[https://cdn.origene.com/chromatograms/mk6206\\_d06.zip](https://cdn.origene.com/chromatograms/mk6206_d06.zip)

**Restriction Sites:**

Sgfl-MluI

**Cloning Scheme:**

Cloning sites used for ORF Shutting:



\* The last codon before the Stop codon of the ORF

**ACCN:** NM\_032860

**ORF Size:** 1425 bp

**OTI Disclaimer:** The molecular sequence of this clone aligns with the gene accession number as a point of reference only. However, individual transcript sequences of the same gene can differ through naturally occurring variations (e.g. polymorphisms), each with its own valid existence. This clone is substantially in agreement with the reference, but a complete review of all prevailing variants is recommended prior to use. [More info](#)

**OTI Annotation:** This clone was engineered to express the complete ORF with an expression tag. Expression varies depending on the nature of the gene.

**Components:** The ORF clone is ion-exchange column purified and shipped in a 2D barcoded Matrix tube containing 10ug of transfection-ready, dried plasmid DNA (reconstitute with 100 ul of water).

**Reconstitution Method:**

1. Centrifuge at 5,000xg for 5min.
2. Carefully open the tube and add 100ul of sterile water to dissolve the DNA.
3. Close the tube and incubate for 10 minutes at room temperature.
4. Briefly vortex the tube and then do a quick spin (less than 5000xg) to concentrate the liquid at the bottom.
5. Store the suspended plasmid at -20°C. The DNA is stable for at least one year from date of shipping when stored at -20°C.

**RefSeq:** [NM\\_032860.5](#)
**RefSeq Size:** 1835 bp

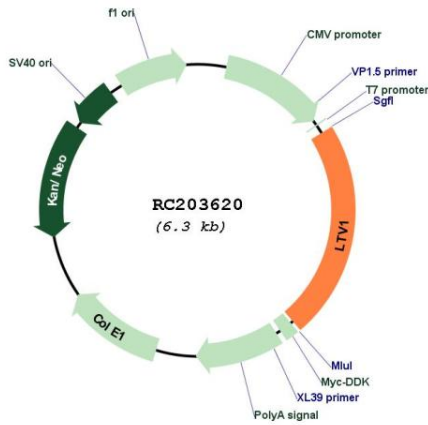
**RefSeq ORF:** 1428 bp

**Locus ID:** 84946

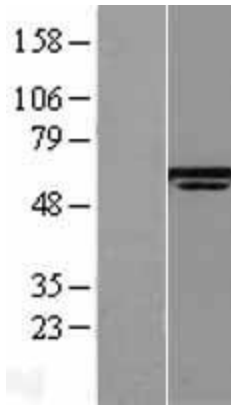
**UniProt ID:** [Q96GA3](#)
**Cytogenetics:** 6q24.2

Domains: LTV  
 MW: 54.9 kDa

**Product images:**



Circular map for RC203620



Western blot validation of overexpression lysate (Cat# [LY409894]) using anti-DDK antibody (Cat# [TA50011-100]). Left: Cell lysates from untransfected HEK293T cells; Right: Cell lysates from HEK293T cells transfected with RC203620 using transfection reagent MegaTran 2.0 (Cat# [TT210002]).