

Product datasheet for **RC203619**

R3HDM4 (NM_138774) Human Tagged ORF Clone

Product data:

Product Type:	Expression Plasmids
Product Name:	R3HDM4 (NM_138774) Human Tagged ORF Clone
Tag:	Myc-DDK
Symbol:	R3HDM4
Synonyms:	C19orf22
Mammalian Cell Selection:	Neomycin
Vector:	pCMV6-Entry (PS100001)
E. coli Selection:	Kanamycin (25 ug/mL)
ORF Nucleotide Sequence:	>RC203619 representing NM_138774 Red=Cloning site Blue=ORF Green=Tags(s)

TTTTGTAATACGACTCACTATAGGGCGGCCGGAATTCGTCGACTGGATCCGGTACCGAGGAGATCTGCC
GCC**CGGATCGCC**

ATGGTCGCGCTGGAGAACCCCGAGTGCGGCCCGGAGGCGGCGGAGGGCACCCGGGCGGGCGGGCTGC
TGCCCTTCCCAGCTGCCTGCCCTAGCCAGCTCCCAGGTGAAGAGACTCTCGGTTCCAGGCGGAA
ACAGCACTTCATCAACCAGGCAGTGCAGAACTCAGACCTCGTCCCAAGGCCAAGGGCGGAAGAGCCTC
CAGCGCCTGGAGAACCCAGTACCTCCTGACCCTGCTGGAGACAGACGGGGCCTGCCTGGCCTGGAGG
ATGGGGACTTGGCACCCCTGCATCACCAGGCATCTTTGCCGAGGCTGCAACAACGCCACCTATGTGGA
GGTCTGGAACGATTTTCATGAACCGCTCCGGGAGGAGCAGGAGCGGGTTCTTCGCTACCTGGAGGATGAG
GGCAGGAGCAAGGCGCGGAGGAGGGCCCTGGCCGTGGGAGGACCGGAGGAGAGAGGACCCGCCTATA
CACCCCGCGAGTGCTTCCAGCGCATCAGCCGGCGTCTGCGAGCCGCTCAAGCGCAGCCGCATCCCCAT
GGAAACGCTGGAGACCTGGGAGGAGCGGCTGCTTCGGTTCTTCTCCGTGTCACCCAGCCGTGTACACA
GCAATGCTAGACAACAGCTTCGAGAGGCTTCTGCTGCACGCTGTCTGCCAGTACATGGACCTCATCTCGG
CCAGTGTGACCTGGAGGGGAAGCGGCAGATGAAGGTCAGTAATCGGCACCTGGATTTCTGCCCGCGG
GCTGCTCTGTCCGCTACCTGGAGCAGCACAGC

ACGCGTACGCGGCCGCTCGAGCAGAAACTCATCTCAGAAGAGGATCTGGCAGCAAATGATATCCTGGATT
ACAAGGATGACGACGATAAGGTTTAA



[View online »](#)

Protein Sequence: >RC203619 representing NM_138774
Red=Cloning site Green=Tags(s)

MVALENPECGPEAAEGTPGGRRLLPLPSCLPALASSQVKRLSASRRKQHFINQAVRNSDLVPKAKGRKSL
 QRLENTQYLLTLETDGGLPGLDGDLPAPPSPGIFAEACNNATYVEVWDFMNRSGEEQERVLYLEDE
 GRSKARRRGPRGEDRRREDPAYTPRECFQRISRRLRAVLKRSRIPMETLETWEERLLRFFSVSPQAVYT
 AMLDNSFERLLLHAVCQYMDLISASADLEGKRQMKVSNRHLDFLPPGLLLSAYLEQHS

TRTRPLEQKLISEEDLAANDILDYKDDDDKV

Chromatograms: https://cdn.origene.com/chromatograms/mk6569_e01.zip

Restriction Sites: SgfI-MluI

Cloning Scheme:



ACCN: NM_138774

ORF Size: 804 bp

OTI Disclaimer: The molecular sequence of this clone aligns with the gene accession number as a point of reference only. However, individual transcript sequences of the same gene can differ through naturally occurring variations (e.g. polymorphisms), each with its own valid existence. This clone is substantially in agreement with the reference, but a complete review of all prevailing variants is recommended prior to use. [More info](#)

OTI Annotation: This clone was engineered to express the complete ORF with an expression tag. Expression varies depending on the nature of the gene.

Components: The ORF clone is ion-exchange column purified and shipped in a 2D barcoded Matrix tube containing 10ug of transfection-ready, dried plasmid DNA (reconstitute with 100 ul of water).

Reconstitution Method:

1. Centrifuge at 5,000xg for 5min.
2. Carefully open the tube and add 100ul of sterile water to dissolve the DNA.
3. Close the tube and incubate for 10 minutes at room temperature.
4. Briefly vortex the tube and then do a quick spin (less than 5000xg) to concentrate the liquid at the bottom.
5. Store the suspended plasmid at -20°C. The DNA is stable for at least one year from date of shipping when stored at -20°C.

RefSeq: [NM_138774.4](#)

RefSeq Size: 1810 bp

RefSeq ORF: 807 bp

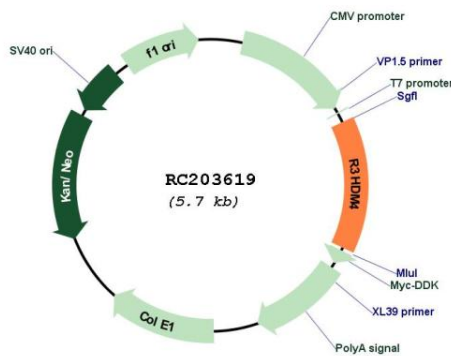
Locus ID: 91300

UniProt ID: [Q96D70](#)

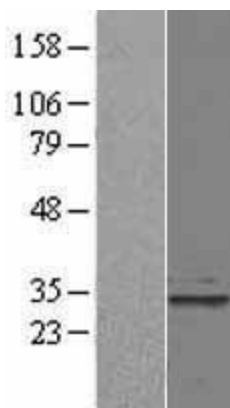
Cytogenetics: 19p13.3

MW: 30.2 kDa

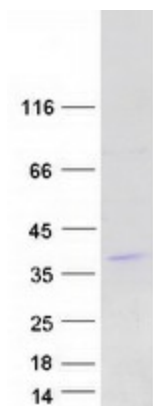
Product images:



Circular map for RC203619



Western blot validation of overexpression lysate (Cat# [LY408514]) using anti-DDK antibody (Cat# [TA50011-100]). Left: Cell lysates from untransfected HEK293T cells; Right: Cell lysates from HEK293T cells transfected with RC203619 using transfection reagent MegaTran 2.0 (Cat# [TT210002]).



Coomassie blue staining of purified R3HDM4 protein (Cat# [TP303619]). The protein was produced from HEK293T cells transfected with R3HDM4 cDNA clone (Cat# RC203619) using MegaTran 2.0 (Cat# [TT210002]).