

Product datasheet for RC203612

ERGIC1 (NM_001031711) Human Tagged ORF Clone

Product data:

| | |
|---------------------------|---|
| Product Type: | Expression Plasmids |
| Product Name: | ERGIC1 (NM_001031711) Human Tagged ORF Clone |
| Tag: | Myc-DDK |
| Symbol: | ERGIC1 |
| Synonyms: | AMC2; AMCN; ERGIC-32; ERGIC32; NET24 |
| Mammalian Cell Selection: | Neomycin |
| Vector: | pCMV6-Entry (PS100001) |
| E. coli Selection: | Kanamycin (25 ug/mL) |
| ORF Nucleotide Sequence: | >RC203612 ORF sequence Red=Cloning site Blue=ORF Green=Tags(s) |

TTTTGTAATACGACTCACTATAGGGCGGCCGGAATTCGTCGACTGGATCCGGTACCGAGGAGATCTGCC
GCC**CGATCGCC**

ATGCCCTTTGACTTCAGGAGTTTGACATCTACAGGAAGGTGCCAAGGACCTTACGCAGCCAACGTACA
CCGGGGCCATTATCTCCATCTGCTGCCTTTCATCCTCTTCTCCTTCGGAGCTACCCGGATT
TATAACGACAGAAGTTGTGAACGAGCTCTATGTCGATGACCCAGACAAGGACAGCGGTGGCAAGATCGAC
GTCAGTCTGAACATCAGTTTACCAATCTGCACTGCGAGTTGGTGGGCTTGACATTGAGGATGAGATGG
GCAGGCACGAAGTGGGCCACATCGACAACCTCCATGAAGATCCCGCTGAACAATGGGGCAGGCTGCCGCTT
CGAGGGGCAGTTCAGCATCAACAAGTCCCGGCAACTTCCACGTGTCCACACACAGTGCCACAGCCAG
CCACAGAACCCAGACATGACGCATGTCCACAAGCTCTCCTTTGGGGACACGCTACAGGTCCAGAACA
TCCACGGAGCTTTCAATGCTCTCGGGGAGCAGACAGACTCACCTCCAACCCCTGGCCTCCCACGACTA
CATCCTGAAGATTGTGCCACGGTTTATGAGGACAAGAGTGGCAAGCAGCGGTACTCCTACCAGTACAG
GTGGCCAACAAGGAATACGTCGCTACAGCCACACGGCCGCATCATCCCTGCAATCTGGTTCGGTACG
ACCTCAGCCCCATCAGGTCAAGTACACAGAGAGACGGCAGCCGCTGTACAGATTATCACCACGATCTG
TGCCATCATTGGCGGGACCTTACCCTGCGCCGCATCCTGGACTCATGCATCTTCACAGCCTCTGAGGCC
TGAAGAAGATCCAGCTGGGCAAGATGCAT

ACGCGTACGCGGCCGCTCGAGCAGAAACTCATCTCAGAAGAGGATCTGGCAGCAAATGATATCCTGGATT
ACAAGGATGACGACGATAAGGTTTAA



[View online »](#)

Protein Sequence: >RC203612 protein sequence
Red=Cloning site Green=Tags(s)

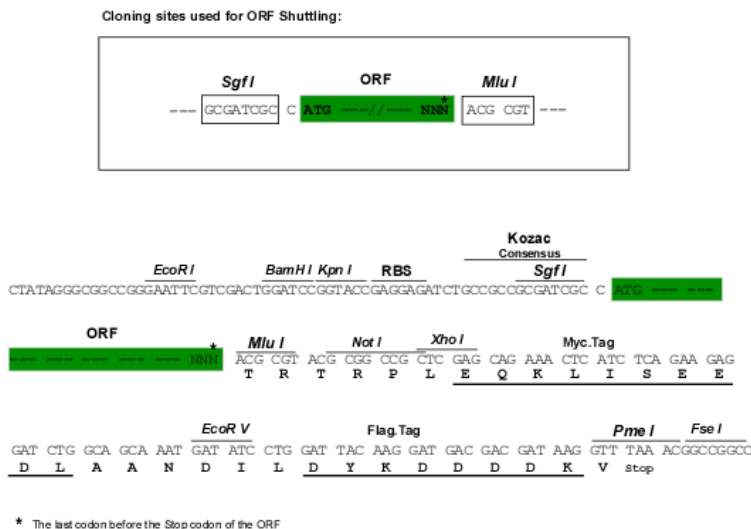
MPFDFFRRFDIYRKVPKDLTQPTYTGAIISICCCFLFILFLFLSEL TGFITTEVVNELYVDDPKDSSGKID
VSLNISLPLNHLCEL VGLDIQDEMGRHEVGHIDNSMKIPLNNGAGCRFEGQFSINKVPGNFHVSTHSATAQ
PQNPDMTHVHKLSFGDTLQVQNIHGAFNALGGADRLTSNPLASHDYILKIVPTVYEDKSGKQRYSYQYT
VANKEYVAYSHTGRIIPAIWFRYDLSPITVKYTERRQPLYRFITTICAIIGGFTTVAGILDSCIFTASEA
WKKIQLGKMH

TRTRPLEQKLISEEDLAANDILDYKDDDDKV

Chromatograms: https://cdn.origene.com/chromatograms/mk6428_b05.zip

Restriction Sites: SgfI-MluI

Cloning Scheme:



ACCN: NM_001031711

ORF Size: 870 bp

OTI Disclaimer: The molecular sequence of this clone aligns with the gene accession number as a point of reference only. However, individual transcript sequences of the same gene can differ through naturally occurring variations (e.g. polymorphisms), each with its own valid existence. This clone is substantially in agreement with the reference, but a complete review of all prevailing variants is recommended prior to use. [More info](#)

OTI Annotation: This clone was engineered to express the complete ORF with an expression tag. Expression varies depending on the nature of the gene.

Components: The ORF clone is ion-exchange column purified and shipped in a 2D barcoded Matrix tube containing 10ug of transfection-ready, dried plasmid DNA (reconstitute with 100 ul of water).

Reconstitution Method:

1. Centrifuge at 5,000xg for 5min.
2. Carefully open the tube and add 100ul of sterile water to dissolve the DNA.
3. Close the tube and incubate for 10 minutes at room temperature.
4. Briefly vortex the tube and then do a quick spin (less than 5000xg) to concentrate the liquid at the bottom.
5. Store the suspended plasmid at -20°C. The DNA is stable for at least one year from date of shipping when stored at -20°C.

RefSeq: [NM_001031711.3](#)

RefSeq Size: 2949 bp

RefSeq ORF: 873 bp

Locus ID: 57222

UniProt ID: [Q969X5](#)

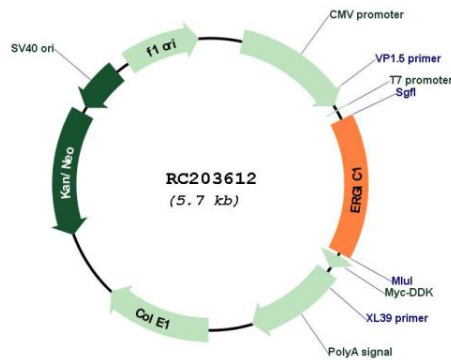
Cytogenetics: 5q35.1

Protein Families: Transmembrane

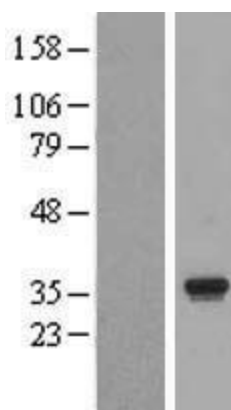
MW: 32.6 kDa

Gene Summary: This gene encodes a cycling membrane protein which is an endoplasmic reticulum-golgi intermediate compartment (ERGIC) protein which interacts with other members of this protein family to increase their turnover. [provided by RefSeq, Jul 2008]

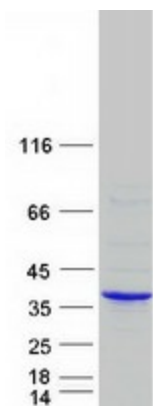
Product images:



Circular map for RC203612



Western blot validation of overexpression lysate (Cat# [LY422162]) using anti-DDK antibody (Cat# [TA50011-100]). Left: Cell lysates from untransfected HEK293T cells; Right: Cell lysates from HEK293T cells transfected with RC203612 using transfection reagent MegaTran 2.0 (Cat# [TT210002]).



Coomassie blue staining of purified ERGIC1 protein (Cat# [TP303612]). The protein was produced from HEK293T cells transfected with ERGIC1 cDNA clone (Cat# RC203612) using MegaTran 2.0 (Cat# [TT210002]).