

## Product datasheet for RC203599

### Protein C inhibitor (SERPINA5) (NM\_000624) Human Tagged ORF Clone

#### Product data:

Product Type:	Expression Plasmids
Product Name:	Protein C inhibitor (SERPINA5) (NM_000624) Human Tagged ORF Clone
Tag:	Myc-DDK
Symbol:	Protein C inhibitor
Synonyms:	PAI-3; PAI3; PCI; PCI-B; PLANH3; PROCI
Mammalian Cell Selection:	Neomycin
Vector:	pCMV6-Entry (PS100001)
E. coli Selection:	Kanamycin (25 ug/mL)
ORF Nucleotide Sequence:	>RC203599 ORF sequence Red=Cloning site Blue=ORF Green=Tags(s)

TTTTGTAATACGACTCACTATAGGGCGGCCGGAATTCGTCGACTGGATCCGGTACCGAGGAGATCTGCC  
GCC**CGATCGCC**

ATGCGACTCTTCTCTCTTGTGCCTGGTCTTCTCAGCCCTCAGGGGGCCTCCCTTACCAGCCACCACC  
CCCGGGAGATGAAGAAGAGAGTCGAGGACCTCCATGTAGGTGCCACGGTGGCCCCCAGCAGCAGAAGGGA  
CTTTACCTTTGACCTCTACAGGGCCTTGGCTCCGCTGCCCCAGCCAGAACATCTTCTTCTCCCTGTG  
AGCATCTCCATGAGCCTGGCCATGCTCTCCCTGGGGCTGGGTCCAGCACAAAGATGCAGATCCTGGAGG  
GCCTGGGCCTCAACCTCCAGAAAAGCTCAGAGAAGGAGCTGCACAGAGGCTTTCAGCAGCTCCTCAGGA  
ACTCAACCAGCCAGAGATGGCTTCCAGCTGAGCCTCGGCAATGCCCTTTTACCAGCCTGGTGGTAGAC  
CTGCAGGACACCTTCGTAAGTGCCATGAAGACGCTGTACCTGGCAGACACTTTCCCCACCAACTTTAGGG  
ACTCTGCAGGGGCCATGAAGCAGATCAATGATTATGTGGCAAAGCAAACGAAGGGCAAGATTGTGGACTT  
GCTTAAGAACCTCGATAGCAATGCGGTGCGTATCATGGTGAATTACATCTTTAAAGCTAAGTGGGAG  
ACAAGCTTCAACCACAAAGGCACCAAGAGCAAGACTTACGTGACCTCGGAGACTGTGGTGCGGGTAC  
CCATGATGAGCCGCGAGGATCAGTATCACTACCTCCTGGACCGGAACCTCTCCTGCAGGGTGGTGGGGT  
CCCCTACCAAGGCAATGCCACGGCTTTGTTTCATTCTCCCAGTGAGGGAAAGATGCAGCAGGTGGAGAAT  
GGACTGAGTGAGAAAACGCTGAGGAAGTGGCTTAAGATGTTCAAAAAGAGGCAGCTCGAGCTTTACCTTC  
CCAAATTCCTCATTGAGGGCTCCTATCAGCTGGAGAAAGTCTCCCAGTCTGGGGATCAGTAACGTCTT  
CACCTCCCATGCTGATCTGTCCGCATCAGCAACCACTCAAATATCCAGGTGTCTGAGATGGTGCACAAA  
GCTGTGGTGGAGGTGGACGAGTCGGGAACCAGAGCAGCGGCAGCCACGGGACAATCTTCACTTTTACGGT  
CGGCCCGCTGAACCTCAGAGGCTAGTGTTCACAGGCCCTTTCTGATGTTTCATTGTGGATAACAACAT  
CCTCTTCTTGGCAAAGTGAACCGCCCC

**ACGGT**ACGGCGCGCTCGAGCAGAACTCATCTCAGAAGAGGATCTGGCAGCAAATGATATCCTGGATT  
ACAAGGATGACGACGATAAGGTTTAA



[View online »](#)

**Protein Sequence:** >RC203599 protein sequence  
Red=Cloning site Green=Tags(s)

MQLFLLLCLVLLSPQGASLHRHHPREMKKRVEDLHVIGATVAPSSRRDFTFDLYRALASAAPSQNIFFSPV  
 SISMSLAML SLGAGSSTKMQLLEGLNLQKSSEKELHRGFQQLLQELNQPDRDGFQLSLGNALFTDLVVD  
 LQDTFVSAMKTLYLADTFPTNFRDSAGAMKQINDYVAKQTKGKIVDLLKNLDSNAVVMVNYIFFKAKWE  
 TSFNHKGTEQDFYVTSETVVRVPMMSREDQYHYLLDRNLSCRVVGVPPYQGNATALFILPSEGKMQQVEN  
 GLSEKTLRKWLKMFKKRQLELYLPKFSIEGSYQLEKVLPSLGISNVFTSHADLSGISNHSNIQVSEMVKH  
 AVVEVDESGTRAAAATGTIFTFRSARLNSQRLVFNRPFLMFIVDNNILFLGKVNRP

TRTRPLEQKLISEEDLAANDILDYKDDDDKV

**Chromatograms:** [https://cdn.origene.com/chromatograms/mk6414\\_f01.zip](https://cdn.origene.com/chromatograms/mk6414_f01.zip)

**Restriction Sites:** SgfI-MluI

**Cloning Scheme:**



**ACCN:** NM\_000624

**ORF Size:** 1218 bp

**OTI Disclaimer:** The molecular sequence of this clone aligns with the gene accession number as a point of reference only. However, individual transcript sequences of the same gene can differ through naturally occurring variations (e.g. polymorphisms), each with its own valid existence. This clone is substantially in agreement with the reference, but a complete review of all prevailing variants is recommended prior to use. [More info](#)

**OTI Annotation:** This clone was engineered to express the complete ORF with an expression tag. Expression varies depending on the nature of the gene.

**Components:** The ORF clone is ion-exchange column purified and shipped in a 2D barcoded Matrix tube containing 10ug of transfection-ready, dried plasmid DNA (reconstitute with 100 ul of water).

**Reconstitution Method:**

1. Centrifuge at 5,000xg for 5min.
2. Carefully open the tube and add 100ul of sterile water to dissolve the DNA.
3. Close the tube and incubate for 10 minutes at room temperature.
4. Briefly vortex the tube and then do a quick spin (less than 5000xg) to concentrate the liquid at the bottom.
5. Store the suspended plasmid at -20°C. The DNA is stable for at least one year from date of shipping when stored at -20°C.

**RefSeq:** [NM\\_000624.3](#), [NP\\_000615.2](#)

**RefSeq Size:** 2352 bp

**RefSeq ORF:** 1221 bp

**Locus ID:** 5104

**UniProt ID:** [P05154](#)

**Cytogenetics:** 14q32.13

**Domains:** SERPIN

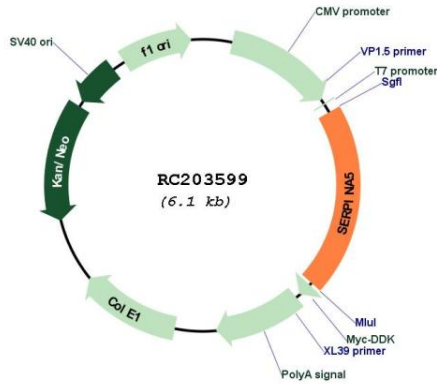
**Protein Families:** Druggable Genome, Secreted Protein

**Protein Pathways:** Complement and coagulation cascades

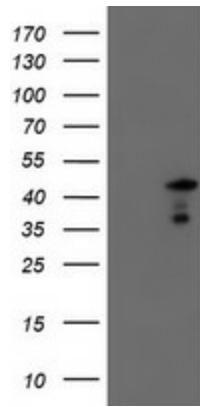
**MW:** 45.7 kDa

**Gene Summary:** The protein encoded by this gene is a member of the serpin family of proteins, a group of proteins that inhibit serine proteases. This gene is one in a cluster of serpin genes located on the q arm of chromosome 14. This family member is a glycoprotein that can inhibit several serine proteases, including protein C and various plasminogen activators and kallikreins, and it thus plays diverse roles in hemostasis and thrombosis in multiple organs. [provided by RefSeq, Aug 2012]

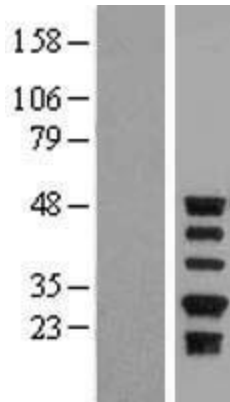
Product images:



Circular map for RC203599



HEK293T cells were transfected with the pCMV6-ENTRY control (Cat# [PS100001], Left lane) or pCMV6-ENTRY SERPINA5 (Cat# RC203599, Right lane) cDNA for 48 hrs and lysed. Equivalent amounts of cell lysates (5 ug per lane) were separated by SDS-PAGE and immunoblotted with anti-SERPINA5 (Cat# [TA504370]). Positive lysates [LY424603] (100ug) and [LC424603] (20ug) can be purchased separately from OriGene.



Western blot validation of overexpression lysate (Cat# [LY424603]) using anti-DDK antibody (Cat# [TA50011-100]). Left: Cell lysates from untransfected HEK293T cells; Right: Cell lysates from HEK293T cells transfected with RC203599 using transfection reagent MegaTran 2.0 (Cat# [TT210002]).