

Product datasheet for **RC203596**

Prolyl Endopeptidase (PREP) (NM_002726) Human Tagged ORF Clone

Product data:

Product Type:	Expression Plasmids
Product Name:	Prolyl Endopeptidase (PREP) (NM_002726) Human Tagged ORF Clone
Tag:	Myc-DDK
Symbol:	Prolyl Endopeptidase
Synonyms:	PE; PEP
Mammalian Cell Selection:	Neomycin
Vector:	pCMV6-Entry (PS100001)
E. coli Selection:	Kanamycin (25 ug/mL)



[View online »](#)

ORF Nucleotide
Sequence:

>RC203596 ORF sequence
 Red=Cloning site Blue=ORF Green=Tags(s)

TTTTGTAATACGACTCACTATAGGGCGGCCGGGAATTCGTCGACTGGATCCGGTACCGAGGAGATCTGCC
 GCC**CGCATCGCC**

ATGCTGTCCCTTCAGTACCCCGACGTGTACCCGACGAGACCCCGTACAGGATTATCATGGTCATAAAA
 TTTGTGACCCTTACGCTTGGCTTGAAGACCCCGACAGTGAACAGACTAAGGCCTTTGTGGAGGCCAGAA
 TAAGATTACTGTGCCATTTCTTGAGCAGTGTCCCATCAGAGGTTTATACAAAGAGAGAATGACTGAACTA
 TATGATTATCCCAAGTATAGTTGCCACTTCAAGAAAGGAAAACGGTATTTTTATTTTTACAATACAGGTT
 TGCAGAACCAGCGAGTATTATATGTACAGGATTCCTTAGAGGGTGAAGCCAGAGTGTCTGGACCCCAA
 CATACTGTCTGACGATGGCACAGTGGCACTCCGAGGTTATGCGTTCAGCGAAGATGGTGAATATTTTGGC
 TATGGTCTGAGTCCAGTGGCTCAGACTGGGTGACAATCAAGTTCATGAAAGTTGATGGTCCAAAGAGC
 TTCCAGATGTGCTTGAAGAGTCAAGTTCAGCTGTATGGCCTGGACCCATGATGGGAAGGGAATGTTCTA
 CAACTCATACCCTCAACAGGATGAAAAAGTGATGGCACAGAGACATCTACCAATCTCCACAAAAGCTC
 TACTACCATGTCTTGGGAACCGATCAGTCAGAAGATATTTTGTGTCTGAGTTTCTCTGATGAACCTAAAT
 GGATGGGTGGAGCTGAGTTATCTGATGATGGCCGCTATGTCTTGTATCAATAAGGGAAGGATGTGATCC
 AGTAAACCGACTCTGGTACTGTGACCTACAGCAGGAATCCAGTGGCATCGCGGGAATCCTGAAGTGGGTA
 AAAGTATTGACAACCTTTGAAGGGGAATATGACTACGTGACCAATGAGGGGACGGTGTTCACATTCAAGA
 CGAATCGCCAGTCTCCCAACTATCGCGTGATCAACATTGACTTCAGGGATCCTGAAGAGTCTAAGTGAA
 AGTACTTGTCTGAGCATGAGAAAGATGTCTTAGAATGGATAGCTTGTGTCAGGTCCAACCTTCTGGTC
 TTATGCTACCTCCATGACGTCAAGAACATTCTGCAGCTCCATGACCTGACTACTGGTCTCTCCTTAAGA
 CTTTCCCGCTCGATGTCGCGCAGCATTGTAGGGTACAGCGGTGAGAAGAAGGACACTGAAAATCTTCTATCA
 GTTTACTTCTTTTTATCTCCAGGTATCATTTATCACTGTGATCTTACCAAAGAGGAGCTGGAGCCAAGA
 GTTTTCCGAGAGGTGACCGTAAAAGGAATTGATGCTTCTGATTACCAGACAGTCCAGATTTTCTACCCTA
 GCAAGGATGGTACGAAGATTCCAATGTTTATTGTGCATAAAAAAGGCATAAAAAATTGGATGGCTCTCATCC
 AGCTTTCTTATATGGCTATGGCGGCTTCAACATATCCATCACACCCAACTACAGTGTTCAGGCTTATT
 TTTGTGAGACACATGGGTGGTATCCTGGCAGTGGCCAACATCAGAGGAGGTGGCGAATATGGAGAGACGT
 GGCATAAAGGTGGTATCTTGGCCAACAACAAAAGTCTTTGATGACTTTCAGTGTGCTGCTGAGTATCT
 GATCAAGGAAGGTTACACATCTCCAAGAGGCTGACTATTAATGGAGGTTCAAATGGAGGCTCTTAGTG
 GCTGCTTGTGCAATCAGAGACCTGACCTTTTGGTTGTGTTATTGCCAAGTTGGAGTAATGGACATGC
 TGAAGTTTCATAAATATACCATCGGCCATGCTTGGACCACTGATTATGGGTGCTCGGACAGCAAACAACA
 CTTTGAATGGCTTGTCAAATACTCTCCATTGCATAATGTGAAGTTACCAGAAGCAGATGACATCCAGTAC
 CCGTCCATGCTGCTCCTCACTGCTGACCATGATGACCGCGTGGTCCCGCTTCACTCCCTGAAGTTATTG
 CCACCTTCAGTACATCGTGGGCCGAGCAGGAAGCAAAGCAACCCCTGCTTATCCACGTGGACACCAA
 GGCGGGCCACGGGGCGGGGAAGCCACAGCCAAAGTGATAGAGGAAGTCTCAGACATGTTTGCCTTCATC
 GCGCGTGCCTGAACGTGACTGGATTCCA

ACGCGTACGCGGCCGCTCGAGCAGAACTCATCTCAGAAGAGGATCTGGCAGCAAATGATATCCTGGATT
 ACAAGGATGACGACGATAAGGTTTAA

Protein Sequence: >RC203596 protein sequence
 Red=Cloning site Green=Tags(s)

MLSLQYPDVYRDEAVQDYHGHKICDPYAWLEDPDSEQTKAFVEAQNKITVPFLEQCPIRGLYKERMTEL
 YDYPKYSCHFKKGKRYFYFYNTGLQNQRVLYVQDSLEGEARVFLDPNILSDDGTVALRGYAFSEDEGEYFA
 YGLSASGSDWVTIKFMKVDGAKELPDVLERVKFSCMAWTHDGKGMFYNSYPQQDGKSDGTETSTNLHQKL
 YYHVLGTDQSEDILCAEFPDEPKWMGGAELSDDGRYVLLSIREGCDPVNRLWYCDLQQEISSGIAGILKWW
 KLIDNFEGEYDYVTNEGTVFTFKTNRQSPNYRVINIDFRDPEESKWKVLVPEHEKDVLEWIACVRSNFLV
 LCYLHDVKNILQLHDLTTGALLKTFLPLDVGSIVGYSGQKKDTEIFYQFTSFLSPGIIYHCDLTKEELEPR
 VFREVTVKGIDASDYQTVQIFYPYKDGTKIPMFIVHKKGIKLDGSHPAFLYGGFNISITPNYSVSRLLI
 FVRHMGILAVANIRGGGEYGETWHKGGILANKQNCFFDQCAAAYLKEGYTSPKRLTINGGSSNGLLV
 AACANQRPDLFQCVIAQVGVMDMLKFHKYTIQHAWTTDYGCSKQHFVWLKYSPLHNKLVPEADDIQY
 PSMLLLTADHDDRVPVPLHSLKFIATLQYIVGRSRKQSNPLLIHVDTKAGHGAGKPTAKVIEEVSDMFAFI
 ARCLNVDWIP

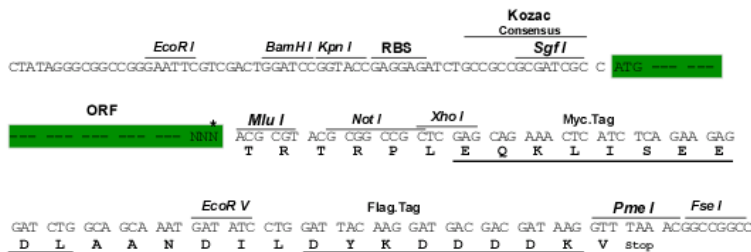
TRTRPLEQKLISEEDLAANDILDYKDDDDKV

Chromatograms: https://cdn.origene.com/chromatograms/mk6203_c09.zip

Restriction Sites: SgfI-MluI

Cloning Scheme:

Cloning sites used for ORF Shuttling:



* The last codon before the Stop codon of the ORF

ACCN: NM_002726

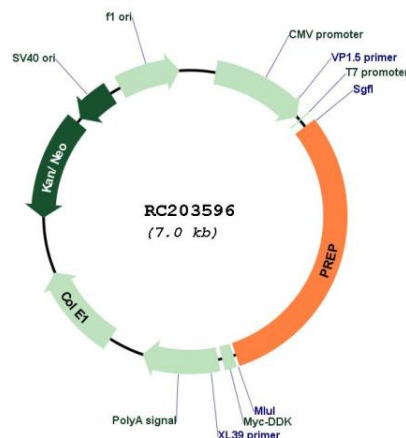
ORF Size: 2130 bp

OTI Disclaimer: The molecular sequence of this clone aligns with the gene accession number as a point of reference only. However, individual transcript sequences of the same gene can differ through naturally occurring variations (e.g. polymorphisms), each with its own valid existence. This clone is substantially in agreement with the reference, but a complete review of all prevailing variants is recommended prior to use. [More info](#)

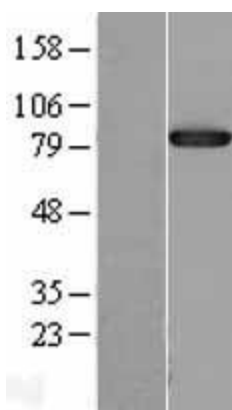
OTI Annotation: This clone was engineered to express the complete ORF with an expression tag. Expression varies depending on the nature of the gene.

Components:	The ORF clone is ion-exchange column purified and shipped in a 2D barcoded Matrix tube containing 10ug of transfection-ready, dried plasmid DNA (reconstitute with 100 ul of water).
Reconstitution Method:	<ol style="list-style-type: none"> 1. Centrifuge at 5,000xg for 5min. 2. Carefully open the tube and add 100ul of sterile water to dissolve the DNA. 3. Close the tube and incubate for 10 minutes at room temperature. 4. Briefly vortex the tube and then do a quick spin (less than 5000xg) to concentrate the liquid at the bottom. 5. Store the suspended plasmid at -20°C. The DNA is stable for at least one year from date of shipping when stored at -20°C.
RefSeq:	NM_002726.5
RefSeq Size:	2943 bp
RefSeq ORF:	2133 bp
Locus ID:	5550
UniProt ID:	P48147
Cytogenetics:	6q21
Domains:	Peptidase_S9, Peptidase_S9_N
Protein Families:	Druggable Genome, Protease
MW:	80.7 kDa
Gene Summary:	The protein encoded by this gene is a cytosolic prolyl endopeptidase that cleaves peptide bonds on the C-terminal side of prolyl residues within peptides that are up to approximately 30 amino acids long. Prolyl endopeptidases have been reported to be involved in the maturation and degradation of peptide hormones and neuropeptides. [provided by RefSeq, Jul 2008]

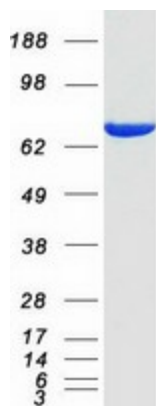
Product images:



Circular map for RC203596



Western blot validation of overexpression lysate (Cat# [LY400960]) using anti-DDK antibody (Cat# [TA50011-100]). Left: Cell lysates from untransfected HEK293T cells; Right: Cell lysates from HEK293T cells transfected with RC203596 using transfection reagent MegaTran 2.0 (Cat# [TT210002]).



Coomassie blue staining of purified PREP protein (Cat# [TP303596]). The protein was produced from HEK293T cells transfected with PREP cDNA clone (Cat# RC203596) using MegaTran 2.0 (Cat# [TT210002]).