

Product datasheet for **RC203593**

FAM113B (PCED1B) (NM_138371) Human Tagged ORF Clone

Product data:

Product Type:	Expression Plasmids
Product Name:	FAM113B (PCED1B) (NM_138371) Human Tagged ORF Clone
Tag:	Myc-DDK
Symbol:	FAM113B
Synonyms:	FAM113B
Mammalian Cell Selection:	Neomycin
Vector:	pCMV6-Entry (PS100001)
E. coli Selection:	Kanamycin (25 ug/mL)



[View online »](#)

ORF Nucleotide
Sequence:

>RC203593 ORF sequence
Red=Cloning site Blue=ORF Green=Tags(s)

TTTTGTAATACGACTCACTATAGGGCGGCCGGAATTCGTCGACTGGATCCGGTACCGAGGAGATCTGCC
GCCCGCATCGCC

ATGATCCTTCTGCGGGCCTCCGAAGTGCAGCTGCTTACAATAAGTTCGTGGTCATCTGGGGGACT
CTGTGCATAGGGCAGTACAAGGACCTGGTGCTTCTGCTGCAGAAGGACCGCTGCTACTCCCGGCA
GCTTAGAGCAAGGGGGAGCTGAACTTCGAACAAGATGAGCTGGTGGACGGAGGCCAGCGGGCCACATG
CACAAACGGCCTTAACTACCGTGAGGTCCGCGAGTTCGCTCCGACCACCATCTGGTACGTTTTACTTCC
TCACCCGCGTGTACTCCGATTACCTCCAGACCATCTTCAAAGAGCTGCAGTCGGGCGAGCAGCCCCGA
CCTGGTCATCATGAATTCCTGCCTCTGGGACATCTCCAGGTATGGTCCGAACTCTGGAGAAGCTACCTG
GAGAACCTGGAGAACCTGTTCCAGTGCCTGGGCCAGGTGCTGCCCGAGTCTTGCCTCTGGTGTGGAACA
CGGCCATGCCTGTGGGCGAGGAAGTACCAGGGGTTTTCTCCGCCAAGCTCCGGCGGCGAGAAGGCCAC
CTTCTGAAAAACGAAGTGGTCAAAGCCAACTTCCACAGCGCCACCGAGGCACGTAACATAACTTCGAT
GTACTGGACTTGCAATTCACCTTCCGCCAGCGAGGGAGAACCTGCACTGGGACGGGTGCACTGGAATG
GACGTGTGCACCGCTGCCTCTCCAGCTGCTGCTGGCCACGTGGCCGACGCTGGGGTGTGGAGCTGCC
CCACCGCCACCCCGTGGGCGAGTGGATCAAAGAAGAAAAAACCCTGGCCGAGAGTCGAAGGGCCGCCACG
GCCAACAGAAATCACCGGCCTTACCTCTGTCCCACCCTTACCTTCCCCACATACCGCCCCCTGCTTG
GGTTCCACCCACGCGCTTGCCGCTGCTCCCGCTCTGTCCCACAGCCTCTCTCCATTCTCCATCA
CCAGGGAATGCCCGGTTCCACAGGGTCCCCAGATGCCTGTTTTCTCAGACCATACTTCCAGTCG
GATCAATTCTATTGCCATTAGATGTCCCTCATCAGCCATGCAGGTTTCTTCGTCGAAGACAATTTTA
TGTTGGTCTCAGCTGCCTATGCCCTTCTTCCCACACCCGTTATCAGCGGCTGCCAGTGGTACA
TAGGGGTTTTGGCAGGTATCGTCCCGTGGCCCTATACGCCCTGGGGACAGCGGCTCGACCTTCAAAG
AGAAGGGCCCCAGCCAATCTGAGCCAAGGCTCAA

ACGCGTACGCGGCGCTCGAGCAGAACTCATCTCAGAAGAGGATCTGGCAGCAATGATATCTGGATT
ACAAGGATGACGACGATAAGGTTTAA

Protein Sequence:

>RC203593 protein sequence
Red=Cloning site Green=Tags(s)

MILLRASEVRQLLHNKFVILGDSVHRVYKDLVLLQKDRLLTPGQLRARGELNFEQDELVDGGQRGHM
HNGLNYREVREFRSDHHLVRFYFLTRVYSDYLQILKELQSGEHAPDLVIMNSCLWDISRYGPNWSRYSY
ENLENLFQCLGQVLPESCLLVWNTAMPVGEVETGGFLPPKLRRQKATFLKNEVVKANFHSATEARKHNF
VLDLHFHFRHARENLHWDGVHWNGRVHRCLSQLLAHVADAWGVELPHRHPVGEWIKKKKPGPRVEGPPQ
ANRNHPALPLSPPLPSPTYRPLLGFPPQRLPLLPLSPQPPPIILHHQGMFRFPQPPDACFSSDHTFQS
DQFYCHSDVPSSAHAGFFVEDNFMVGPQLPMPFFPTPRYQRPAPVVHRGFGRYRPRGPYTPWGQRPRPSK
RRAPANPEPRPQ

TRTRPLEQKLISEEDLAANDILDYKDDDDKV

Chromatograms:

https://cdn.origene.com/chromatograms/mk6413_b06.zip

Restriction Sites:

SgfI-MluI

Cloning Scheme:

ACCN: NM_138371

ORF Size: 1296 bp

OTI Disclaimer: The molecular sequence of this clone aligns with the gene accession number as a point of reference only. However, individual transcript sequences of the same gene can differ through naturally occurring variations (e.g. polymorphisms), each with its own valid existence. This clone is substantially in agreement with the reference, but a complete review of all prevailing variants is recommended prior to use. [More info](#)
OTI Annotation: This clone was engineered to express the complete ORF with an expression tag. Expression varies depending on the nature of the gene.

Components: The ORF clone is ion-exchange column purified and shipped in a 2D barcoded Matrix tube containing 10ug of transfection-ready, dried plasmid DNA (reconstitute with 100 ul of water).

Reconstitution Method:

1. Centrifuge at 5,000xg for 5min.
2. Carefully open the tube and add 100ul of sterile water to dissolve the DNA.
3. Close the tube and incubate for 10 minutes at room temperature.
4. Briefly vortex the tube and then do a quick spin (less than 5000xg) to concentrate the liquid at the bottom.
5. Store the suspended plasmid at -20°C. The DNA is stable for at least one year from date of shipping when stored at -20°C.

RefSeq: [NM_138371.3](#)
RefSeq Size: 2376 bp

RefSeq ORF: 1299 bp

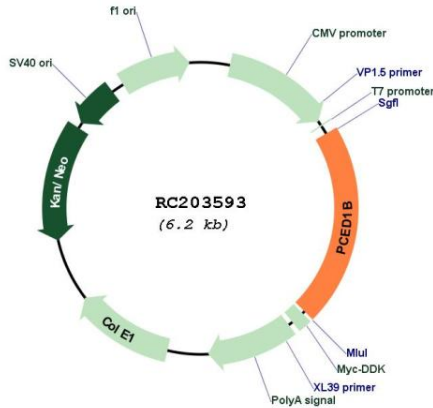
Locus ID: 91523

UniProt ID: [Q96HM7](#)
Cytogenetics: 12q13.11

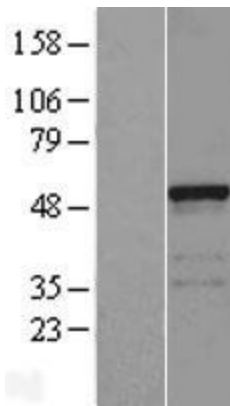
MW: 49.7 kDa

Gene Summary: This gene encodes a protein that belongs to the GDSL/SGNH-like acyl-esterase family. Members of this family are hydrolases thought to function in modification of biopolymers on the cell surface. Alternate splicing results in multiple transcript variants encoding different isoforms. [provided by RefSeq, Jul 2013]

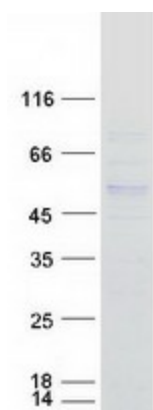
Product images:



Circular map for RC203593



Western blot validation of overexpression lysate (Cat# [LY408640]) using anti-DDK antibody (Cat# [TA50011-100]). Left: Cell lysates from untransfected HEK293T cells; Right: Cell lysates from HEK293T cells transfected with RC203593 using transfection reagent MegaTran 2.0 (Cat# [TT210002]).



Coomassie blue staining of purified PCED1B protein (Cat# [TP303593]). The protein was produced from HEK293T cells transfected with PCED1B cDNA clone (Cat# RC203593) using MegaTran 2.0 (Cat# [TT210002]).