

Product datasheet for RC203592

PELO (NM_015946) Human Tagged ORF Clone

Product data:

Product Type:	Expression Plasmids
Product Name:	PELO (NM_015946) Human Tagged ORF Clone
Tag:	Myc-DDK
Symbol:	PELO
Synonyms:	CGI-17; PRO1770
Mammalian Cell Selection:	Neomycin
Vector:	pCMV6-Entry (PS100001)
E. coli Selection:	Kanamycin (25 ug/mL)
ORF Nucleotide Sequence:	>RC203592 ORF sequence Red=Cloning site Blue=ORF Green=Tags(s)

TTTTGTAATACGACTCACTATAGGGCGGCCGGAATTCGTCGACTGGATCCGGTACCGAGGAGATCTGCC
GCC**CGATCGCC**

ATGAAGCTCGTGAGGAAGAACATCGAGAAGGACAATGCGGGCCAGGTGACCCTGGTCCCCGAGGAGCCTG
AGGACATGTGGCACACTTACAACCTCGTGCAGGTGGGCGACAGCCTGCGCGCCTCCACCATCCGCAAGGT
ACAGACAGAGTCTCCACGGGCAGCGTGGGCAGCAACCGGGTCCGCACTACCCTCACTCTCTGCGTGGAG
GCCATCGACTTCGACTCTCAAGCCTGCCAGCTGCGGGTTAAGGGGACCAACATCCAAGAGAATGAGTATG
TCAAGATGGGGGCTTACCACACCATCGAGCTGGAGCCCAACCGCCAGTTCACCCTGGCCAAGAAGCAGTG
GGATAGTGTGGTACTGGAGCGCATCGAGCAGGCCCTGTGACCCAGCCTGGAGCGCTGATGTGGCGGCTGTG
GTCATGCAGGAAGGCCTCGCCATATCTGCTTAGTCACTCCCAGCATGACCCTCACTCGGGCCAAGGTGG
AGGTGAACATCCCTAGGAAAAGGAAAGGCAATTGCTCTCAGCATGACCGGGCCTTGGAGCGGTTCTATGA
ACAGGTGGTCCAGGCTATCCAGCGCCACATACACTTTGATGTTGTAAGTGCATCCTGGTGGCCAGCCCA
GGATTTGTGAGGGAGCAGTTCTGCGACTACATGTTTCAACAAGCAGTGAAGACCGACAACAACTGCTCC
TGGAAAACCGGTCCAATTTCTTCAGGTACATGCCTCCTCCGGACACAAGTACTCCCTGAAAGAGGCCCT
TTGTGACCCTACTGTGGCTAGCCGCCTTTCAGACACTAAAGCTGTGGGGAAGTCAAAGCCTTGGATGAC
TTCTATAAAAATGTTACAGCATGAACCGGATCGAGCTTTCTATGGACTCAAGCAGGTGGAGAAGGCCAATG
AAGCCATGGCAATTGACACATTGCTCATCAGCGATGAGCTTTCAGGCATCAGGATGTAGCCACACGGAG
CCGGTATGTGAGGCTGGTGGACAGTGTGAAAGAGAATGCAGGCACCGTTAGGATATTCTCTAGTCTTCAC
GTTTCTGGGGAACAGCTCAGCCAGTTGACTGGGGTAGCTGCCATTCTCCGCTTCCCTGTTCCCGAACTTT
CTGACCAAGAGGGTGATTCCAGTTCTGAAGAGGAT

ACGCGTACGCGGCCGCTCGAGCAGAACTCATCTCAGAAGAGGATCTGGCAGCAATGATATCCTGGATT
ACAAGGATGACGACGATAAGGTTTAA



[View online >](#)

Protein Sequence: >RC203592 protein sequence
 Red=Cloning site Green=Tags(s)

MKLVRKNIKDNAGQVTLVPEEPEDMWHYTNLVQVGDLSLRASIRKVKQTESSTGSGVSNRVRTTLTLCVE
 AIDFDSQACQLRVKGTNIQENEYVKMGAYHTIELEPNRQFTLAKKQWDSVVLERIEQACDPAWSADVAAV
 VMQEGLAHIICLVTPSMTLTRAKVEVNIIPRKRKGNCSQHDRALERFYEQVVQAIQRHIFDVKILVASP
 GFVREQCDYMFQQAVKTDNKLLENRSKFLQVHASSGHKYSYLKEALCDPTVASRLSDTKAAGEVKALDD
 FYKMLQHEPDRAFYGLKQVEKANEAMAIDTLLISDELFRHQDVATRSRYVRLVDSVKENAGTVRIFSSLH
 VSGEQLSQLTGVAAILRFPVPELSDQEGDSSSEED

TRTRPLEQKLISEEDLAANDILDYKDDDDKV

Chromatograms: https://cdn.origene.com/chromatograms/mk6578_a05.zip

Restriction Sites: SgfI-MluI

Cloning Scheme:



* The last codon before the Stop codon of the ORF

ACCN: NM_015946

ORF Size: 1155 bp

OTI Disclaimer: The molecular sequence of this clone aligns with the gene accession number as a point of reference only. However, individual transcript sequences of the same gene can differ through naturally occurring variations (e.g. polymorphisms), each with its own valid existence. This clone is substantially in agreement with the reference, but a complete review of all prevailing variants is recommended prior to use. [More info](#)

OTI Annotation: This clone was engineered to express the complete ORF with an expression tag. Expression varies depending on the nature of the gene.

Components: The ORF clone is ion-exchange column purified and shipped in a 2D barcoded Matrix tube containing 10ug of transfection-ready, dried plasmid DNA (reconstitute with 100 ul of water).

Reconstitution Method:

1. Centrifuge at 5,000xg for 5min.
2. Carefully open the tube and add 100ul of sterile water to dissolve the DNA.
3. Close the tube and incubate for 10 minutes at room temperature.
4. Briefly vortex the tube and then do a quick spin (less than 5000xg) to concentrate the liquid at the bottom.
5. Store the suspended plasmid at -20°C. The DNA is stable for at least one year from date of shipping when stored at -20°C.

RefSeq: [NM_015946.2](#)

RefSeq Size: 2941 bp

RefSeq ORF: 1158 bp

Locus ID: 53918

UniProt ID: [Q9BRX2](#)

Cytogenetics: 5q11.2

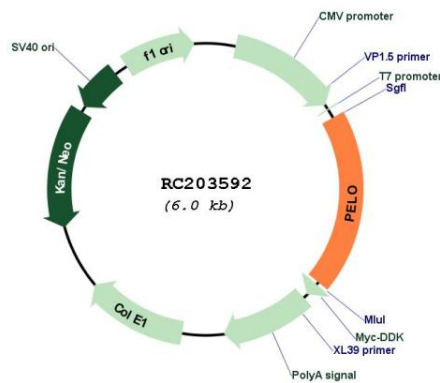
Domains: eRF1_1, eRF1_2, eRF1_3

Protein Families: Druggable Genome

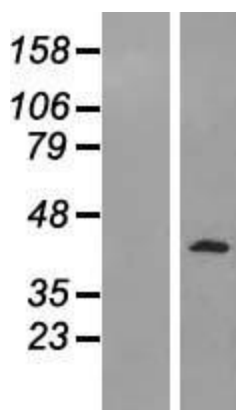
MW: 43.4 kDa

Gene Summary: This gene encodes a protein which contains a conserved nuclear localization signal. The encoded protein may have a role in spermatogenesis, cell cycle control, and in meiotic cell division. [provided by RefSeq, Jul 2008]

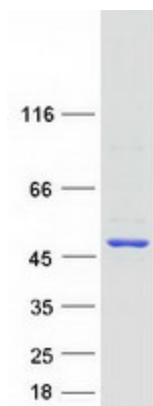
Product images:



Circular map for RC203592



Western blot validation of overexpression lysate (Cat# [LY414299]) using anti-DDK antibody (Cat# [TA50011-100]). Left: Cell lysates from untransfected HEK293T cells; Right: Cell lysates from HEK293T cells transfected with RC203592 using transfection reagent MegaTran 2.0 (Cat# [TT210002]).



Coomassie blue staining of purified PELO protein (Cat# [TP303592]). The protein was produced from HEK293T cells transfected with PELO cDNA clone (Cat# RC203592) using MegaTran 2.0 (Cat# [TT210002]).