

Product datasheet for RC203590

THAP2 (NM_031435) Human Tagged ORF Clone

Product data:

Product Type: Expression Plasmids
 Product Name: THAP2 (NM_031435) Human Tagged ORF Clone
 Tag: Myc-DDK
 Symbol: THAP2
 Mammalian Cell Selection: Neomycin
 Vector: pCMV6-Entry (PS100001)
 E. coli Selection: Kanamycin (25 ug/mL)
 ORF Nucleotide Sequence: >RC203590 ORF sequence
 Red=Cloning site Blue=ORF Green=Tags(s)

TTTTGTAATACGACTCACTATAGGGCGGCCGGAATTCGTCGACTGGATCCGGTACCGAGGAGATCTGCC
 GCC**CGATCGCC**

ATGCCGACCAATTGCGCTGCGCGGGCTGTGCCACTACCTACAACAAGCACATTAACATCAGCTTCCACA
 GGTTTCCTTTGGATCCTAAAAGAAGAAAAGAAATGGGTTTCGCTGGTTAGGCGCAAAAATTTGTGCCAGG
 AAAACACACTTTTCTTTGTTCAAAGCACTTTGAAGCCTCCTGTTTACCTAACAGGACAAAACCTCGACGA
 CTTAAAATGGATGCTGTTCCAACCATTTTGTATTTTGTACCCATATAAAGTCTATGAAACTCAAGTCAA
 GGAATCTTTTGAAGAAAACAACAGTTGTTCTCCAGCTGGACATCTAATTTAAAATCAAACATTAGTAG
 TCAGCAAGTACTACTTGAACACAGCTATGCCTTTAGGAATCCTATGGAGGCAAAAAGAGGATCATTAA
 CTGAAAAAAGAAATAGCAAGCTTAAGAAGAAAATGAAAACCTGCCTACAAAAGGAACGCAGAGCAACTC
 GAAGATGGATCAAAGCCACGTGTTTGGTAAAGAATTTAGAAGCAAATAGTGTATTACCTAAAGGTACATC
 AGAACACATGTTACCAACTGCCTTAAGCAGTCTTCCTTTGGAAGATTTTAAAGATCCTTGAACAAGATCAA
 CAAGATAAAACACTGCTAAGTCTAAATCTAAAACAGACCAAGGTACCTTCATT

ACGCGTACGCGGCCGCTCGAGCAGAAACTCATCTCAGAAGAGGATCTGGCAGCAAATGATATCCTGGATT
 ACAAGGATGACGACGATAAGGTTTAA

Protein Sequence: >RC203590 protein sequence
 Red=Cloning site Green=Tags(s)

MPTNCAAAGCATTYNKHINISFHRFPLDPKRRKEWVRLVRRKNFVPGKHTFLCSKHFEASCFDLTGQTRR
 LKMDAVPTIFDFCTHIKSMKLSRNLKKNNSCSPAGPSNLKSNISSQQVLEHSYAFRNPMEAKKRRIK
 LEKEIASLRRKMKTLQKERRATRRWIKATCLVKNLEANSVLPKGTSEHMLPTALSSLPLEDFKILEQDQ
 QDKTLLSLNLKQTKSTFI

TRTRPLEQKLISEEDLAANDILDYKDDDDKV



Chromatograms: https://cdn.origene.com/chromatograms/mk6413_b12.zip

Restriction Sites: SgfI-MluI

Cloning Scheme:



ACCN: NM_031435

ORF Size: 684 bp

OTI Disclaimer: The molecular sequence of this clone aligns with the gene accession number as a point of reference only. However, individual transcript sequences of the same gene can differ through naturally occurring variations (e.g. polymorphisms), each with its own valid existence. This clone is substantially in agreement with the reference, but a complete review of all prevailing variants is recommended prior to use. [More info](#)

OTI Annotation: This clone was engineered to express the complete ORF with an expression tag. Expression varies depending on the nature of the gene.

Components: The ORF clone is ion-exchange column purified and shipped in a 2D barcoded Matrix tube containing 10ug of transfection-ready, dried plasmid DNA (reconstitute with 100 ul of water).

Reconstitution Method:

1. Centrifuge at 5,000xg for 5min.
2. Carefully open the tube and add 100ul of sterile water to dissolve the DNA.
3. Close the tube and incubate for 10 minutes at room temperature.
4. Briefly vortex the tube and then do a quick spin (less than 5000xg) to concentrate the liquid at the bottom.
5. Store the suspended plasmid at -20°C. The DNA is stable for at least one year from date of shipping when stored at -20°C.

RefSeq: [NM_031435.4](#)

RefSeq Size: 4840 bp

RefSeq ORF: 687 bp

Locus ID: 83591

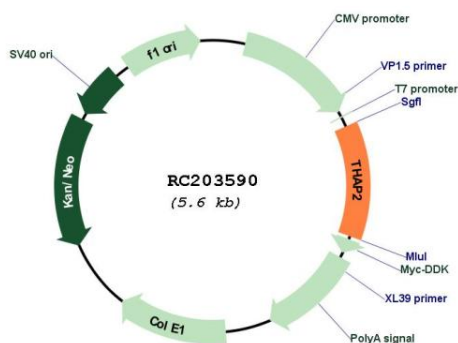
UniProt ID: [Q9H0W7](#)

Cytogenetics: 12q21.1

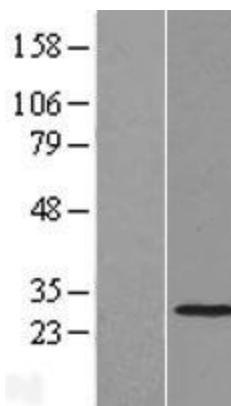
Domains: DM3

MW: 26.3 kDa

Product images:



Circular map for RC203590



Western blot validation of overexpression lysate (Cat# [LY410512]) using anti-DDK antibody (Cat# [TA50011-100]). Left: Cell lysates from untransfected HEK293T cells; Right: Cell lysates from HEK293T cells transfected with RC203590 using transfection reagent MegaTran 2.0 (Cat# [TT210002]).