

Product datasheet for RC203582

SERBP1 (NM_015640) Human Tagged ORF Clone

Product data:

Product Type:	Expression Plasmids
Product Name:	SERBP1 (NM_015640) Human Tagged ORF Clone
Tag:	Myc-DDK
Symbol:	SERBP1
Synonyms:	CGI-55; CHD3IP; HABP4L; PAI-RBP1; PAIRBP1
Mammalian Cell Selection:	Neomycin
Vector:	pCMV6-Entry (PS100001)
E. coli Selection:	Kanamycin (25 ug/mL)
ORF Nucleotide Sequence:	>RC203582 ORF sequence Red=Cloning site Blue=ORF Green=Tags(s)

TTTTGTAATACGACTCACTATAGGGCGGCCGGAATTCGTCGACTGGATCCGGTACCGAGGAGATCTGCC
GCC**CGATCGCC**

ATGCTGGGCACTTACAGGAAGGCTTCGGCTGCGTGGTACCAACCGATTGACAGTTATTTGACGACG
AATCGGACCCCTTCGAGGTGCTGAAGGCAGCAGAGAACAAGAAAAAGAAGCCGGCGGGGGCGGCTTGG
GGGCCCTGGGGCCAAGAGCGCAGCTCAGGCCGGCCAGACCAACTCCAACGGCGCAGGCAAACAGCTG
CGCAAGGAGTCCCAGAAAGACCGCAAGAACCCGCTGCCCCAGCGTTGGCGTGGTTGACAAGAAAGAGG
AGACGCAGCCGCCGTGGCGCTTAAGAAAGAAGGAATAAGACGAGTTGGAAGAAGACCTGATCAACAACT
TCAGGGTGAAGGAAAATAATTGATAGAAGACCAGAAAGGCGACCACCTCGTGAACGAAGATTGAAAAAG
CCACTTGAAGAAAAGGTGAAGGAGGCGAATTTTCAGTTGATAGACCGATTATTGACCGACCTATTGCGAG
GTCGTGGTGGTCTTGAAGAGGTGAGGGGGCCGTGGACGTGGAATGGGCCGAGGAGATGGATTTGATTC
TCGTGGCAAACGTGAATTTGATAGGCATAGTGGAAGTGATAGATCTGGCCTGAAGCACGAGGACAAACGT
GGAGGTAGCGGATCTCACAACGGGAACTGTCAAAGACGAATTAAGTACTGGATCAATCAAATGTGA
CTGAGGAAACACCTGAAGGTGAAGAATCATCCAGTGGCAGACACTGAAAAAAGGAGAATGAAGTTGA
AGAGGTAAAAGAGGAGGGTCCAAAAGAGATGACTTTGGATGAGTGAAGGCTATTCAAAAAAGGACCGG
GCAAAAAGTAGAATTTAATATCCGAAAACCAATGAAGGTGCTGATGGCCAGTGAAGAAGGGATTTGTTT
TTCATAAATCAAAGAGTGAAGAGGCTCATGCTGAAGATTGCGTTATGGACCATCATTTCCGGAAGCCAGC
AAATGATATAACGTCTCAGCTGGAGATCAATTTGGAGACCTTGCCGCCAGGACGTGGCGGCAGGGGA
GGACGAGGTGGACGTGGGCGTGGTGGGCGCCAAACCGTGGCAGCAGGACCGACAAGTCAAGTGCTTCTG
CTCCTGATGTGGATGACCCAGAGGCATTCCAGCTCTGGCT

ACGCGTACGGGGCCGCTCGAGCAGAACTCATCTCAGAAGAGGATCTGGCAGCAATGATATCCTGGATT
ACAAGGATGACGACGATAAGGTTTAA



[View online >](#)

Protein Sequence: >RC203582 protein sequence
Red=Cloning site Green=Tags(s)

MPGHLQEGFGCVVTNRFQQLFDDSDPFEVLKAAENKKKEAGGGGVGPGAKSAAQAAAQTNSNAAGKQL
 RKESQKDRKNLPPSVGVVDKKEETQPPVALKKEGIRRVGRRPDQQLQGEKIIDRRPERRPPRERRFEK
 PLEEKGEGEFSVDRPIIDRPIRGRGGLGRGRGGRGMGRGDGFD SRGKREFDRHSGSDRSGLKHEDKR
 GSGSHNWGTVKDELTDLDQSNVTEETPEGEEHHPVADTENKENEVEEVKEEGPKEMTLDEWKAIQNKDR
 AKVEFNIRKPNEGADGQWKKGFVLHKSKEEAHAEDSVMDDHFRKRPANDITSQLEINFGDLGRPGRGGRG
 GRGGRGGRPNRGRSRTDKSSASAPDVDDPEAFPALA

TRTRPLEQKLISEEDLAANDILDYKDDDDKV

Chromatograms: https://cdn.origene.com/chromatograms/mk6154_f12.zip

Restriction Sites: SgfI-MluI

Cloning Scheme:



ACCN: NM_015640

ORF Size: 1161 bp

OTI Disclaimer: The molecular sequence of this clone aligns with the gene accession number as a point of reference only. However, individual transcript sequences of the same gene can differ through naturally occurring variations (e.g. polymorphisms), each with its own valid existence. This clone is substantially in agreement with the reference, but a complete review of all prevailing variants is recommended prior to use. [More info](#)

OTI Annotation: This clone was engineered to express the complete ORF with an expression tag. Expression varies depending on the nature of the gene.

Components: The ORF clone is ion-exchange column purified and shipped in a 2D barcoded Matrix tube containing 10ug of transfection-ready, dried plasmid DNA (reconstitute with 100 ul of water).

Reconstitution Method:

1. Centrifuge at 5,000xg for 5min.
2. Carefully open the tube and add 100ul of sterile water to dissolve the DNA.
3. Close the tube and incubate for 10 minutes at room temperature.
4. Briefly vortex the tube and then do a quick spin (less than 5000xg) to concentrate the liquid at the bottom.
5. Store the suspended plasmid at -20°C. The DNA is stable for at least one year from date of shipping when stored at -20°C.

RefSeq: [NM_015640.4](#)

RefSeq Size: 6701 bp

RefSeq ORF: 1164 bp

Locus ID: 26135

UniProt ID: [Q8NC51](#)

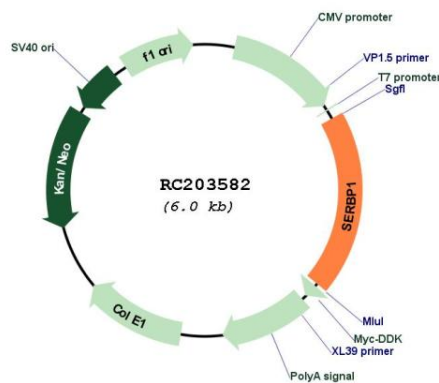
Cytogenetics: 1p31.3

Domains: HABP4_PA1-RBP1

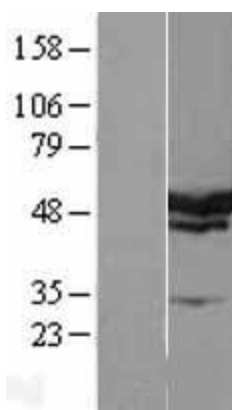
MW: 42.4 kDa

Gene Summary: May play a role in the regulation of mRNA stability. Binds to the 3'-most 134 nt of the SERPINE1/PAI1 mRNA, a region which confers cyclic nucleotide regulation of message decay. Seems to play a role in PML-nuclear bodies formation (PubMed:28695742).[UniProtKB/Swiss-Prot Function]

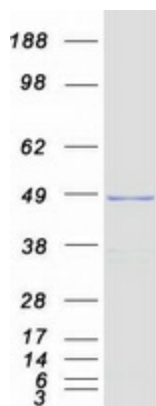
Product images:



Circular map for RC203582



Western blot validation of overexpression lysate (Cat# [LY402455]) using anti-DDK antibody (Cat# [TA50011-100]). Left: Cell lysates from untransfected HEK293T cells; Right: Cell lysates from HEK293T cells transfected with RC203582 using transfection reagent MegaTran 2.0 (Cat# [TT210002]).



Coomassie blue staining of purified SERBP1 protein (Cat# [TP303582]). The protein was produced from HEK293T cells transfected with SERBP1 cDNA clone (Cat# RC203582) using MegaTran 2.0 (Cat# [TT210002]).