

## Product datasheet for RC203572

### C6orf136 (NM\_145029) Human Tagged ORF Clone

#### Product data:

**Product Type:** Expression Plasmids  
**Product Name:** C6orf136 (NM\_145029) Human Tagged ORF Clone  
**Tag:** Myc-DDK  
**Symbol:** C6orf136  
**Mammalian Cell Selection:** Neomycin  
**Vector:** pCMV6-Entry (PS100001)  
**E. coli Selection:** Kanamycin (25 ug/mL)  
**ORF Nucleotide Sequence:** >RC203572 ORF sequence  
 Red=Cloning site Blue=ORF Green=Tags(s)

TTTTGTAATACGACTCACTATAGGGCGGCCGGAATTCGTCGACTGGATCCGGTACCGAGGAGATCTGCC  
 GCC**CGATCGCC**

ATGGAGGAACATCTGTCTGTCATGTATGAGAGACTGAGACAAGAGCTTCCAAGCTTTCCTTCAGTCCC  
 ACGACTACAGTCTGTATTCCTTGGATGTGGAATTCATCAATGAGATCCTCAACATACGTACCAAGGGCCG  
 GACATGGTACATTTCTTCACTGACCCTCTGCCGTTTCTGGCCTGGAATTATTTGCACACCTTCGTTTG  
 GAGGTTTTACAGCTGACCCGCCACCCTGAGAAGCTGGACCCTGCAAGCCCGGTGGCGGCTTGTGGGGCTGC  
 CCGTCCACTTGCTTTTTGCGTTCTACAAGCTGACAAGACGAGCATTACCGACCTATGATGCCTA  
 CTCCTTTTCTACCTGAATTCAGTGGCCTCATTGTGCGCCATCGTCTAGATAAACTGATGCCTTCACAC  
 TCACCTCAACGCCTGTGAAGAAGCTGCTAGTGGAGCCCTGGTGGCCCTGGGGCTGTCAGAGCCAGAAC  
 CTGACTTAAACCTGTGTTCCAAGCCC

**ACGCGT**ACGCGGCCGCTCGAGCAGAAACTCATCTCAGAAGAGGATCTGGCAGCAATGATATCCTGGATT  
 ACAAGGATGACGACGATAAGGTTTAA

**Protein Sequence:** >RC203572 protein sequence  
 Red=Cloning site Green=Tags(s)

MEEHLSVMYERLRQELPKLFLQSHDYSLYSLDVEFINEILNIRTKGRWYILSLTLCRFLAWNYFAHLRL  
 EVLQLTRHPENWTLQARWRLVGLPVHLLFLRFYKRDKDEHYRTYDAYSTFYLNSSGLICRHLRDLKMPSH  
 SPPTPVKKLLVGLVALGLSEPEPDLNLCSKP

**TRTRPLEQKLI**SEEDLAANDILDYKDDDDKV

**Chromatograms:** [https://cdn.origene.com/chromatograms/mk6429\\_h09.zip](https://cdn.origene.com/chromatograms/mk6429_h09.zip)

**Restriction Sites:** Sgfl-MluI



[View online »](#)

**Cloning Scheme:**


**ACCN:** NM\_145029

**ORF Size:** 516 bp

**OTI Disclaimer:** The molecular sequence of this clone aligns with the gene accession number as a point of reference only. However, individual transcript sequences of the same gene can differ through naturally occurring variations (e.g. polymorphisms), each with its own valid existence. This clone is substantially in agreement with the reference, but a complete review of all prevailing variants is recommended prior to use. [More info](#)

**OTI Annotation:** This clone was engineered to express the complete ORF with an expression tag. Expression varies depending on the nature of the gene.

**Components:** The ORF clone is ion-exchange column purified and shipped in a 2D barcoded Matrix tube containing 10ug of transfection-ready, dried plasmid DNA (reconstitute with 100 ul of water).

- Reconstitution Method:**
1. Centrifuge at 5,000xg for 5min.
  2. Carefully open the tube and add 100ul of sterile water to dissolve the DNA.
  3. Close the tube and incubate for 10 minutes at room temperature.
  4. Briefly vortex the tube and then do a quick spin (less than 5000xg) to concentrate the liquid at the bottom.
  5. Store the suspended plasmid at -20°C. The DNA is stable for at least one year from date of shipping when stored at -20°C.

**Note:** Plasmids are not sterile. For experiments where strict sterility is required, filtration with 0.22um filter is required.

**RefSeq:** [NM\\_145029.2](#)

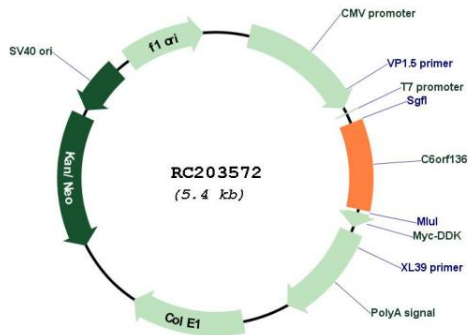
**RefSeq Size:** 1039 bp

**RefSeq ORF:** 546 bp

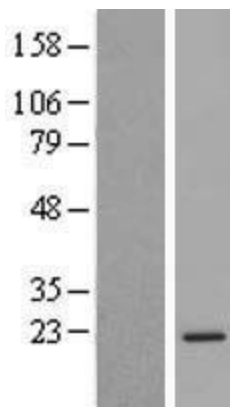
**Locus ID:** 221545

UniProt ID: [Q5SQH8](#)  
 Cytogenetics: 6p21.33  
 MW: 20.5 kDa

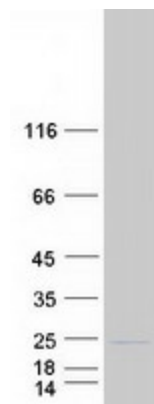
**Product images:**



Circular map for RC203572



Western blot validation of overexpression lysate (Cat# [LY408090]) using anti-DDK antibody (Cat# [TA50011-100]). Left: Cell lysates from untransfected HEK293T cells; Right: Cell lysates from HEK293T cells transfected with RC203572 using transfection reagent MegaTran 2.0 (Cat# [TT210002]).



Coomassie blue staining of purified C6orf136 protein (Cat# [TP303572]). The protein was produced from HEK293T cells transfected with C6orf136 cDNA clone (Cat# RC203572) using MegaTran 2.0 (Cat# [TT210002]).