

Product datasheet for RC203571

NUBP2 (NM_012225) Human Tagged ORF Clone

Product data:

Product Type:	Expression Plasmids
Product Name:	NUBP2 (NM_012225) Human Tagged ORF Clone
Tag:	Myc-DDK
Symbol:	NUBP2
Synonyms:	CFD1; CIAO6; NBP 2; NUBP1
Mammalian Cell Selection:	Neomycin
Vector:	pCMV6-Entry (PS100001)
E. coli Selection:	Kanamycin (25 ug/mL)
ORF Nucleotide Sequence:	>RC203571 ORF sequence Red=Cloning site Blue=ORF Green=Tags(s)

TTTTGTAATACGACTCACTATAGGGCGGCCGGAATTCGTCGACTGGATCCGGTACCGAGGAGATCTGCC
GCC**CGATCGCC**

ATGGAGGCGGGCCGAGCCTGGAACCTGGCCGGCGTCAGGCACATCATCTGGTCTCTCAGGAAAGG
GGGGCGTTGGGAAAAGCACCATCTCCACGGAGCTGGCCCTGGCACTGCGCCATGCAGGCAAGAAGGTGGG
AATCCTGGATGTGGACCTGTGTGGCCCCAGTATACCCCGCATGCTCGGGGCGCAGGGCAGGGCTGTGCAC
CAGTGCACCGCGGCTGGGCACCCGTCTCCTGGACCGGGAGCAGAGCATCTCGCTCATGTCTGTGGCT
TCCTGCTGGAGAAGCCGGACGAGGCCGTGGTGTGGAGAGGCCCAAGAAAACCGCTGATAAAGCAGTT
TGTGTCCGACGTGGCCTGGGGGAGCTGGACTACCTGGTGGTGGACACGCCCCCGGGGACCTCCGATGAG
CACATGGCCACCATAGAAGCCCTGCGTCCCTACCAGCCCTGGGGCCCTCGTGGTACCACGCCCCAGG
CGGTGTCCGTGGGGGACGTGAGGCGCGAGCTGACCTTCTGTAGGAAGACGGGCTTGGGGTATGGGAAT
CGTGGAGAATAAGAGCGGCTTACCTGCCCACTGCACGGAGTGCACCAGCGTCTTCCAGGGGGCGG
GGAGAGGAGCTGGCCAGCTCGCCGGGTGCCCTTCTTAGGCTCCGTGCCCTGGACCCTGCGCTCATGA
GGACCTGGAGGAGGGCCACGACTTCATCCAGGAGTCCCGGGAGCCCCGCCTTCGCTGCACTCACCTC
CATAGCCCAGAAGATTCTGGACGCGACGCCCGCTGCCCTCCC

ACGCGTACGCGGCCGCTCGAGCAGAAACTCATCTCAGAAGAGGATCTGGCAGCAAATGATATCCTGGATT
ACAAGGATGACGACGATAAGGTTTAA



[View online »](#)

Protein Sequence: >RC203571 protein sequence
Red=Cloning site Green=Tags(s)

MEAAAEPGNLAGVRHIIIVLSGKGGVVKSTISTELALALRHAGKKGILVDVLCGPSIPRMLGAQGRAVH
 QCDRGWAPVFLDREQISILMSVGFLLLEKPDVAVVWRGPKKNALIKQFVSDVAWGELDYLVVDTPPGTSDE
 HMATIEALRPYQPLGALVVTTPQAVSVGDVRRLETFCKRTGLRVMGIVENMSGFTCPHCTECTSVFSRGG
 GEELAQLAGVPFLGSVPLDPAIMRTLEEGRHDFIQEFPGSPAFAALTSIAQKILDATPAACL

TRTRPLEQKLISEEDLAANDILDYKDDDDKV

Chromatograms: https://cdn.origene.com/chromatograms/mk6413_g11.zip

Restriction Sites: SgfI-MluI

Cloning Scheme:



ACCN: NM_012225

ORF Size: 813 bp

OTI Disclaimer: The molecular sequence of this clone aligns with the gene accession number as a point of reference only. However, individual transcript sequences of the same gene can differ through naturally occurring variations (e.g. polymorphisms), each with its own valid existence. This clone is substantially in agreement with the reference, but a complete review of all prevailing variants is recommended prior to use. [More info](#)

OTI Annotation: This clone was engineered to express the complete ORF with an expression tag. Expression varies depending on the nature of the gene.

Components: The ORF clone is ion-exchange column purified and shipped in a 2D barcoded Matrix tube containing 10ug of transfection-ready, dried plasmid DNA (reconstitute with 100 ul of water).

Reconstitution Method:

1. Centrifuge at 5,000xg for 5min.
2. Carefully open the tube and add 100ul of sterile water to dissolve the DNA.
3. Close the tube and incubate for 10 minutes at room temperature.
4. Briefly vortex the tube and then do a quick spin (less than 5000xg) to concentrate the liquid at the bottom.
5. Store the suspended plasmid at -20°C. The DNA is stable for at least one year from date of shipping when stored at -20°C.

Note: Plasmids are not sterile. For experiments where strict sterility is required, filtration with 0.22um filter is required.

RefSeq: [NM_012225.4](#)

RefSeq Size: 1408 bp

RefSeq ORF: 816 bp

Locus ID: 10101

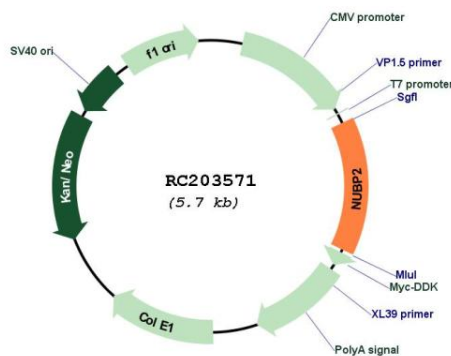
UniProt ID: [Q9Y5Y2](#)

Cytogenetics: 16p13.3

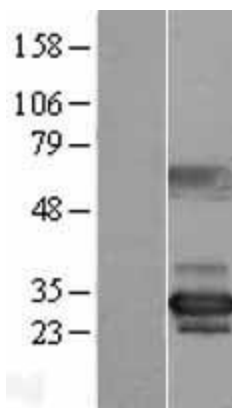
MW: 28.8 kDa

Gene Summary: This gene encodes an adenosine triphosphate (ATP) and metal-binding protein that is required for the assembly of cytosolic iron-sulfur proteins. The encoded protein functions in a heterotetramer with nucleotide-binding protein 1 (NUBP1). Alternative splicing results in multiple transcript variants. [provided by RefSeq, Oct 2013]

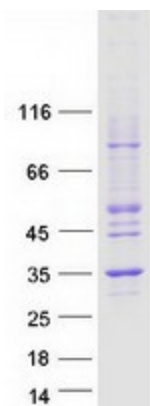
Product images:



Circular map for RC203571



Western blot validation of overexpression lysate (Cat# [LY415900]) using anti-DDK antibody (Cat# [TA50011-100]). Left: Cell lysates from untransfected HEK293T cells; Right: Cell lysates from HEK293T cells transfected with RC203571 using transfection reagent MegaTran 2.0 (Cat# [TT210002]).



Coomassie blue staining of purified NUBP2 protein (Cat# [TP303571]). The protein was produced from HEK293T cells transfected with NUBP2 cDNA clone (Cat# RC203571) using MegaTran 2.0 (Cat# [TT210002]).