

Product datasheet for **RC203567**

SPNS1 (NM_032038) Human Tagged ORF Clone

Product data:

Product Type:	Expression Plasmids
Product Name:	SPNS1 (NM_032038) Human Tagged ORF Clone
Tag:	Myc-DDK
Symbol:	SPNS1
Synonyms:	HSpin1; LAT; nrs; PP2030; SLC62A1; SPIN1; SPINL
Mammalian Cell Selection:	Neomycin
Vector:	pCMV6-Entry (PS100001)
E. coli Selection:	Kanamycin (25 ug/mL)



[View online »](#)

ORF Nucleotide Sequence:

>RC203567 ORF sequence
 Red=Cloning site Blue=ORF Green=Tags(s)

TTTTGTAATACGACTCACTATAGGGCGGCCGGAATTCGTCGACTGGATCCGGTACCGAGGAGATCTGCC
 GCC**CGATCGCC**

ATGGCCGGGTCGGACACCGCCCTTCTCAGCCAGGCGGATGACCCGGACGACGGCCAGTGCCTGGCA
 CCCCGGGTTGCCAGGTCACGGGAACCCGAAGTCCGAGGAGCCGAGGTCCCGACCAGGAGGGCT
 GCAGCGCATACCGCCGTCTCTCCCGCCGTTCCGCTCTCATAGTGGCGTGCTGTGCTACATCAATCTC
 CTGAACTACATGGACCGCTTACCGTGGCTGGCGTCTTCCCGACATCGAGCAGTTCTTCAACATCGGGG
 ACAGTAGCTCTGGGCTCATCCAGACCGTGTTCATCTCCAGTTACATGGTGTGGCACCTGTGTTGGCTA
 CCTGGGTGACAGGTACAATCGGAAGTATCTCATGTGCGGGGGCATTGCCTTCTGGTCCCTGGTGACTG
 GGGTCATCTTCCATCCCGGAGAGCATTCTGGCTGCTCTCTGACCCGGGGCCTGGTGGGGTCCGGG
 AGGCCAGTTATCCACCATCGCGCCACTCTATTGCCGACTCTTTGTGGCCGACGAGCGGAGCCGGAT
 GCTCAGCATCTTCTACTTTGCCATTCGGTGGGAGTGGTCTGGGCTACATTGCAGGCTCCAAGTGAAG
 GATATGGCTGGAGACTGGCACTGGGCTCTGAGGGTGACACCGGGTCTAGGAGTGGTGGCCGTTCTGCTGC
 TGTTCCTGGTAGTGCGGGAGCCGCAAGGGGAGCCGTGGAGCGCCACTCAGATTTGCCACCCCTGAACCC
 CACCTCGTGGTGGCAGATCTGAGGGCTCTGGCAAGAAATCCTAGTTTCGTCTTCTCCCTGGGCTTC
 ACTGCTGTGGCCTTTGTACGGGCTCCCTGGCTCTGTGGGCTCCGGCATTCTGCTGCGTTCCCGCGTGG
 TCCTTGGGGAGACCCACCCTGCCTTCCCGGAGACTCTGCTCTTCTCTGACAGTCTCATCTTTGGACT
 CATCACCTGCCTGACCGGAGTCTGGGTGTGGGCTGGGTGTGGAGATCAGCCCGCGCTCCGCCACTCC
 AACCCCGGGCTGATCCCTGGTCTGTGCCACTGGCCTCTGGGCTCTGCACCTTCTCTTCTGTCCC
 TTGCCTGCGCCCGTGGTAGCATCGTGCCACTTATATTTTCATCTTCATTGGAGAGACCCCTCTGCTCAT
 GAATGGGCCATCGTGGCCGACATTCTGCTGTACGTGGTATCCCTACCGGACGCTCCACCGCCGAGGCC
 TTCAGATCGTGTCTCCACCTGCTGGGTGATGCTGGGAGCCCTACCTCATTGGCCTGATCTCTGACC
 GCCTGCGCCGAACTGGCCCCCTCCTTCTGTCCGAGTTCGGGCTCTGCAGTTCTCGCTCATGCTCTG
 CGGTTTGTGGGCACTGGGCGCGCAGCCTTCTGGGACCGCCATCTTATTGAGGCCGACCGCCGG
 CGGGCACAGTGCACGTGCAGGGCTGCTGCACGAAGCAGGGTCCACAGACGACCGGATTGTGGTCCCC
 AGCGGGCCGCTCCACCGCGTCCCGTGGCCAGTGTGCTCATC

ACGCGTACGCGGCCGCTCGAGCAGAACTCATCTCAGAAGAGGATCTGGCAGCAAATGATATCTGGATT
 ACAAGGATGACGACGATAAGGTTTAA

Protein Sequence:

>RC203567 protein sequence
 Red=Cloning site Green=Tags(s)

MAGSDTAPFLSQADDDPDPVPGTLPGLPGSTGNPKSEEPEVPDQEGLRITGLSPGRSALIVAVLCYINL
 LNYMDRFVAVGLPDIEQFFNIGDSSSLIQTVFISSYMLAPVFGYLGDRYNRYLMCGGIAFWSLVTL
 GSSFIPGEHFWLLLLTRGLVGVGEASYSTIAPTLIADLFVADQRSRMLSIFYFAIPVGSGLGYIAGSKVK
 DMAGDWHWALRVTPGLGVVAVLLLFLVREPPRGAVRHSPLPLNPTSWWADLRALARNPSFVLSLGF
 TAVAFVTGSLALWAPFLLRSRVVLGETPPCLPGDSCSSDSLIFGLITCLTGLVGVGLGVEISRRLRHS
 NPRADPLVCATGLLGSAPFLFLSLACARGSIVATYIFIFIGETLLSMNWAIVADILLVYVIPTRRSTAEA
 FQIVLSHLLGDAGSPYLIGLISDRLRRNWPPSFLSEFRALQFSLMLCAFVGLGGAFLGTAIFIEADRR
 RAQLHVQGLLHEAGSTDDRIVVQQRGRSTRVPVASVLI

TRTRPLEQKLISEEDLAANDILDYKDDDDKV

Chromatograms:

https://cdn.origene.com/chromatograms/mk6413_d04.zip

Restriction Sites:

Sgfl-MluI

Cloning Scheme:


ACCN: NM_032038

ORF Size: 1584 bp

OTI Disclaimer: The molecular sequence of this clone aligns with the gene accession number as a point of reference only. However, individual transcript sequences of the same gene can differ through naturally occurring variations (e.g. polymorphisms), each with its own valid existence. This clone is substantially in agreement with the reference, but a complete review of all prevailing variants is recommended prior to use. [More info](#)

OTI Annotation: This clone was engineered to express the complete ORF with an expression tag. Expression varies depending on the nature of the gene.

Components: The ORF clone is ion-exchange column purified and shipped in a 2D barcoded Matrix tube containing 10ug of transfection-ready, dried plasmid DNA (reconstitute with 100 ul of water).

- Reconstitution Method:**
1. Centrifuge at 5,000xg for 5min.
 2. Carefully open the tube and add 100ul of sterile water to dissolve the DNA.
 3. Close the tube and incubate for 10 minutes at room temperature.
 4. Briefly vortex the tube and then do a quick spin (less than 5000xg) to concentrate the liquid at the bottom.
 5. Store the suspended plasmid at -20°C. The DNA is stable for at least one year from date of shipping when stored at -20°C.

Note: Plasmids are not sterile. For experiments where strict sterility is required, filtration with 0.22um filter is required.

RefSeq: [NM_032038.3](#)

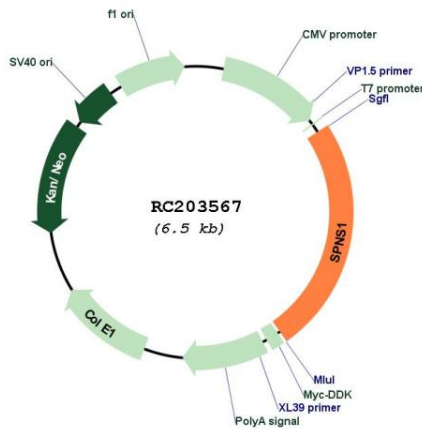
RefSeq Size: 2230 bp

RefSeq ORF: 1587 bp

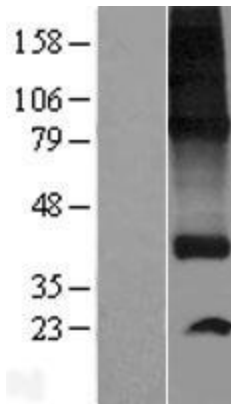
Locus ID: 83985

UniProt ID: [Q9H2V7](#)
Cytogenetics: 16p11.2
Domains: sugar_tr
Protein Families: Transmembrane
MW: 56.6 kDa
Gene Summary: Sphingolipid transporter (By similarity). May be involved in necrotic or autophagic cell death. [UniProtKB/Swiss-Prot Function]

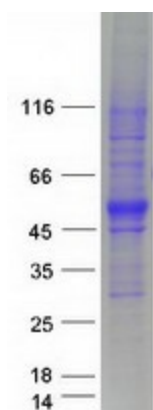
Product images:



Circular map for RC203567



Western blot validation of overexpression lysate (Cat# [LY428102]) using anti-DDK antibody (Cat# [TA50011-100]). Left: Cell lysates from untransfected HEK293T cells; Right: Cell lysates from HEK293T cells transfected with [RC227635] using transfection reagent MegaTran 2.0 (Cat# [TT210002]).



Coomassie blue staining of purified SPNS1 protein (Cat# [TP303567]). The protein was produced from HEK293T cells transfected with SPNS1 cDNA clone (Cat# RC203567) using MegaTran 2.0 (Cat# [TT210002]).