

Product datasheet for **RC203564**

RERG (NM_032918) Human Tagged ORF Clone

Product data:

Product Type: Expression Plasmids
 Product Name: RERG (NM_032918) Human Tagged ORF Clone
 Tag: Myc-DDK
 Symbol: RERG
 Mammalian Cell Selection: Neomycin
 Vector: pCMV6-Entry (PS100001)
 E. coli Selection: Kanamycin (25 ug/mL)
 ORF Nucleotide Sequence: >RC203564 ORF sequence
 Red=Cloning site Blue=ORF Green=Tags(s)

TTTTGTAATACGACTCACTATAGGGCGGCCGGAATTCGTCGACTGGATCCGGTACCGAGGAGATCTGCC
 GCC**CGATCGCC**

ATGGCTAAAAGTGC GGAGGTCAA CTGGCAATATTTGGGAGAGCAGGCGTGGGCAAGTCAGCTCTTGTAG
 TGAGATTTCTGACCAAACGGTTCATCTGGGAATATGATCCCACCCTCGAATCAACCTACCGACACCAAGC
 AACCATCGATGATGAAGTTGTTCCATGGAGATACTAGACACTGCTGGTCAGGAAGATACCATTACAGAGG
 GAGGGGCACATGCGATGGGGGAAGGCTTTGTGCTGGTCTACGACACTGACCGAGGAAGTTTGGAGG
 AAGTGTGCCACTTAAGAACATCTAGATGAGATCAAAAAGCCCAAGAATGTGACTCTCATCTTGGTTGG
 AAACAAAGCTGACTTGGACCACTCCAGGCAGGTTAGCACAGAAGAAGGAGAGAAGCTGGCCACAGAATTG
 GCTTGTGCTTTTTACGAGTGCTCTGCCTGCACTGGAGAAGGGAACATCACAGAGATATTCTATGAATTGT
 GTCGAGAGGTGCGTCGCCGGAGGATGGTGCAGGGCAAGACGAGGCGACGCAGCTCCACCACGCATGTCAA
 GCAAGCCATTAACAAGATGCTCACAAAATCAGTAGT

ACGCGTACGCGGCCGCTCGAGCAGAACTCATCTCAGAAGAGGATCTGGCAGCAAATGATATCCTGGATT
 ACAAGGATGACGACGATAAGGTTTAA

Protein Sequence: >RC203564 protein sequence
 Red=Cloning site Green=Tags(s)

MAKSAEVKLAIFGRAGVGKLSALVVRFLTKRFIWEYDPTLESTYRHQATIDDEVVSMEILD TAGQEDTIQR
 EGHMRWGEFVLVYDITDRGSFEEVLPKLNILDEIKKPKNVTLILVGNKADLDHSRQVSTEEGEKLA TEL
 ACAFYECSACTGEGNITEIFYELCREVRRRRMVQGKTRRRSSTTHVKQAINKMLTKISS

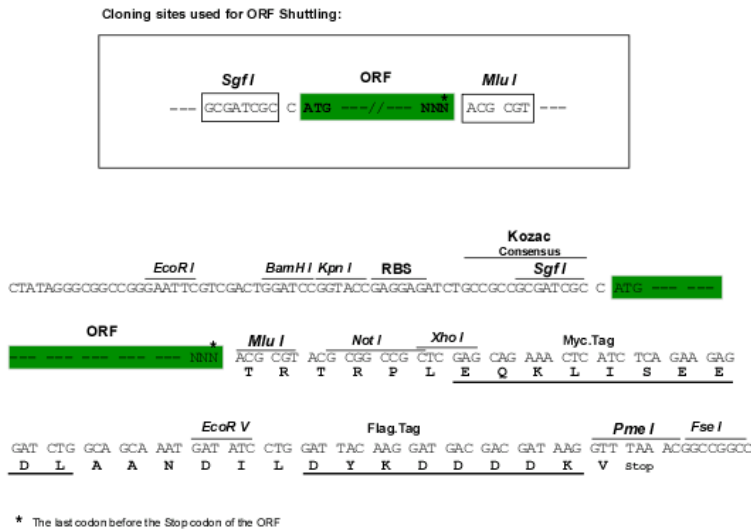
TRTRPLEQKLI SEEDLAANDILDYKDDDDKV

Chromatograms: https://cdn.origene.com/chromatograms/mk6413_b09.zip



Restriction Sites: Sgfl-MluI

Cloning Scheme:



ACCN: NM_032918

ORF Size: 597 bp

OTI Disclaimer: The molecular sequence of this clone aligns with the gene accession number as a point of reference only. However, individual transcript sequences of the same gene can differ through naturally occurring variations (e.g. polymorphisms), each with its own valid existence. This clone is substantially in agreement with the reference, but a complete review of all prevailing variants is recommended prior to use. [More info](#)

OTI Annotation: This clone was engineered to express the complete ORF with an expression tag. Expression varies depending on the nature of the gene.

Components: The ORF clone is ion-exchange column purified and shipped in a 2D barcoded Matrix tube containing 10ug of transfection-ready, dried plasmid DNA (reconstitute with 100 ul of water).

- Reconstitution Method:
1. Centrifuge at 5,000xg for 5min.
 2. Carefully open the tube and add 100ul of sterile water to dissolve the DNA.
 3. Close the tube and incubate for 10 minutes at room temperature.
 4. Briefly vortex the tube and then do a quick spin (less than 5000xg) to concentrate the liquid at the bottom.
 5. Store the suspended plasmid at -20°C. The DNA is stable for at least one year from date of shipping when stored at -20°C.

RefSeq: [NM_032918.3](#)

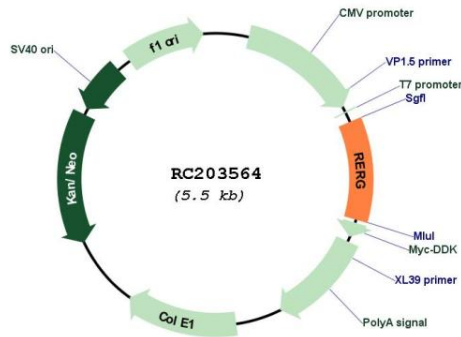
RefSeq Size: 2325 bp

RefSeq ORF: 600 bp

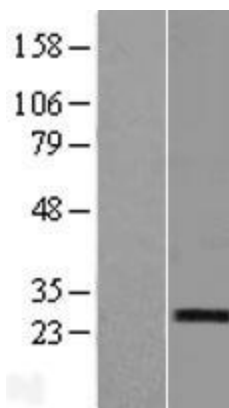
Locus ID: 85004

UniProt ID: [Q96A58](#)

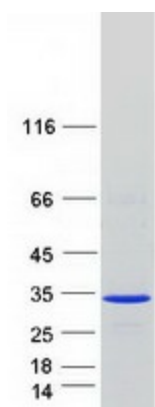
Cytogenetics: 12p12.3
Domains: ras, RAS, RHO, RAB
Protein Families: Druggable Genome
MW: 22.6 kDa
Gene Summary: RERG, a member of the RAS superfamily of GTPases, inhibits cell proliferation and tumor formation (Finlin et al., 2001 [PubMed 11533059]).[supplied by OMIM, Mar 2009]

Product images:


Circular map for RC203564



Western blot validation of overexpression lysate (Cat# [LY409869]) using anti-DDK antibody (Cat# [TA50011-100]). Left: Cell lysates from untransfected HEK293T cells; Right: Cell lysates from HEK293T cells transfected with RC203564 using transfection reagent MegaTran 2.0 (Cat# [TT210002]).



Coomassie blue staining of purified RERG protein (Cat# [TP303564]). The protein was produced from HEK293T cells transfected with RERG cDNA clone (Cat# RC203564) using MegaTran 2.0 (Cat# [TT210002]).