

## Product datasheet for **RC203559**

### **IGSF21 (NM\_032880) Human Tagged ORF Clone**

#### **Product data:**

Product Type:	Expression Plasmids
Product Name:	IGSF21 (NM_032880) Human Tagged ORF Clone
Tag:	Myc-DDK
Symbol:	IGSF21
Mammalian Cell Selection:	Neomycin
Vector:	pCMV6-Entry (PS100001)
E. coli Selection:	Kanamycin (25 ug/mL)



[View online »](#)

**ORF Nucleotide Sequence:**

>RC203559 ORF sequence  
 Red=Cloning site Blue=ORF Green=Tags(s)

TTTTGTAATACGACTCACTATAGGGCGGCCGGAATTCGTCGACTGGATCCGGTACCGAGGAGATCTGCC  
 GCC**CGGATCGCC**

ATGCGAACCGCCCCGAGCCTCCGCCGCTGCGTCTGCCTGTGCTCGCCGGATCCTGGACCTGGCGCGG  
 GCTACCTGACAGTCAACATTGAGCCTCTCCCCCTGTGGTGGCTGGAGACGCCGTGACTTTGAAGTGAA  
 CTTCAAGACAGATGGCGCATGCGGGAGATCGTGTGGTACCGGGTGACGGATGGTGGCACCATCAAGCAA  
 AAGATCTTCACCTTCGACGCCATGTTCTCCACCACTACTCACACATGGAGAACTACCGAAGCGAGAGG  
 ACCTGGTGTACCAGTCCACTGTGAGGCTGCCGAGGTCCGGATCTCAGACAATGGTCCCTATGAGTGCCA  
 TGTGGGCATCTACGACCGCGCCACCAGGGAGAAGGTGGTCTGGCATCAGGCAACATCTTCTCAACGTC  
 ATGGCTCTCCACCTCCATTGAAGTGGTGGCTGCTGACACACCAGCCCCCTTCAGCCGCTACCAAGCCC  
 AGAACTTCACGCTGGTCTGCATCGTGTCTGGAGAAAACCAGCACCCATGGTTTATTTCAAACGAGATGG  
 GGAACCAATCGACGCAGTGCCCTATCAGAGCCACCAGCTGCGAGCTCCGGCCCCCTACAGGACAGCAGG  
 CCCTTCGCGAGCCTTCTGACCCGTGACCTGGATGACACCAAGATGCAGAAGTCACTGTCCCTCTGGACG  
 CCGAGAACCAGGGGTGGGCGACCCCTACACGGAGCGCCCCCTCCCGTGGCCTGACCCAGATCCCAACATCCT  
 CCTCCAGCCAACACAGAGAACAATACCAGAGACGGTCTGAGCCGTGAGTTTCCCGCTGGGTCCACAGC  
 GCCGAGCCCACTACTTCTGCGCCACAGCCGACCCCGAGCAGTGACGGCACTGTGGAAGTACGTGCC  
 TGCTCACCTGGACCTCAACCCACAGATCGACAACGAGGCCCTTTCAGTGCAGAGTCAAGCACCCAGC  
 TCTGTGATGCCATGCAGGCAGAGGTACGCTGGTTGCCCCAAAGGACCCAAAATTGTGATGACGCC  
 AGCAGAGCCCGGGTAGGGGACACAGTGAAGTCTGGTCCATGGGTTTTCAGAACGAAGTCTTCCCGGAGC  
 CCATGTTACAGTGGAGCGGGTTGGGAGCCGCTCTGGACGGCAGCGCTGAGTTCGAGGGAAGGAGCT  
 GGTGCTGGAGCGGGTCCCGCCGAGCTCAATGGCTCCATGTATCGCTGCACCGCCAGAACCCACTGGGC  
 TCCACCGACACGCACACCCGGCTCATCGTGTGTTGAAAACCCAAATATCCCAAGAGGAACGGAGGACTCTA  
 ATGTTCCATTGGCCCCACTGGTCCCGGCTCACCTTGGTCTGCCCTGACAGTATTCTGGAGCTGAC  
 G

**ACGCGT**ACGCGGCCGCTCGAGCAGAACTCATCTCAGAAGAGGATCTGGCAGCAATGATATCCTGGATT  
 ACAAGGATGACGACGATAAGGTTTAA

**Protein Sequence:**

>RC203559 protein sequence  
 Red=Cloning site Green=Tags(s)

MRTAPSLRRCVLLLAAILDLARGYLTVNIEPLPPVAGDAVTLKCNFKTDGRMREIVWYRVTDGGTIKQ  
 KIFTFDAMFSTNYSHMENYRKREDLVYQSTVRLPEVRISDNGPYECHVGIYDRATREKVVLASGNIFLNV  
 MAPPTSIEVVAADTPAPFSRYQAQNFLLVCIVSGGKPPMVFYKRDGEPIDAVPLSEPPAASSGPLQDSR  
 PFRSLLHRDLDDTKMQKSLSLDAENRGGRPYTERPSRGLTPDPNILLQPTTENIPETVVSREFPRWVHS  
 AEPTYFLRHSRTPSSDGTVEVRALLTWLNPQIDNEALFSCVHKHPALSMMPQAEVTLVAPKGPKIVMTP  
 SRARVGDVIRILVHGFQNEVFPEPMFTWTRVGSRLLDGSAEFDGKELVLERVPAELNGSMYRCTAQNPLG  
 STDTHRLIVFENPNIPRGTEDSNGSIGPTGARLTLVLALTVILELT

**TR**TRPLEQKLISEEDLAANDILDYKDDDDKV

**Chromatograms:**

[https://cdn.origene.com/chromatograms/mk6579\\_h12.zip](https://cdn.origene.com/chromatograms/mk6579_h12.zip)

**Restriction Sites:**

Sgfl-Mlul

**Cloning Scheme:**


**ACCN:** NM\_032880

**ORF Size:** 1401 bp

**OTI Disclaimer:** The molecular sequence of this clone aligns with the gene accession number as a point of reference only. However, individual transcript sequences of the same gene can differ through naturally occurring variations (e.g. polymorphisms), each with its own valid existence. This clone is substantially in agreement with the reference, but a complete review of all prevailing variants is recommended prior to use. [More info](#)

**OTI Annotation:** This clone was engineered to express the complete ORF with an expression tag. Expression varies depending on the nature of the gene.

**Components:** The ORF clone is ion-exchange column purified and shipped in a 2D barcoded Matrix tube containing 10ug of transfection-ready, dried plasmid DNA (reconstitute with 100 ul of water).

- Reconstitution Method:**
1. Centrifuge at 5,000xg for 5min.
  2. Carefully open the tube and add 100ul of sterile water to dissolve the DNA.
  3. Close the tube and incubate for 10 minutes at room temperature.
  4. Briefly vortex the tube and then do a quick spin (less than 5000xg) to concentrate the liquid at the bottom.
  5. Store the suspended plasmid at -20°C. The DNA is stable for at least one year from date of shipping when stored at -20°C.

**Note:** Plasmids are not sterile. For experiments where strict sterility is required, filtration with 0.22um filter is required.

**RefSeq:** [NM\\_032880.5](#)

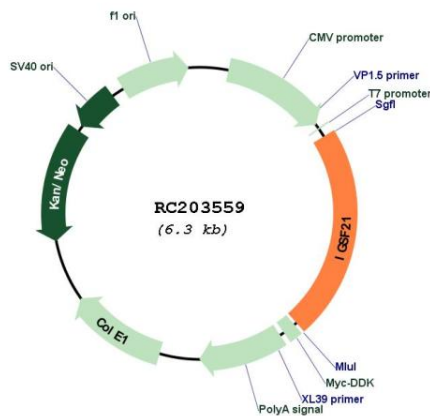
**RefSeq Size:** 1961 bp

**RefSeq ORF:** 1404 bp

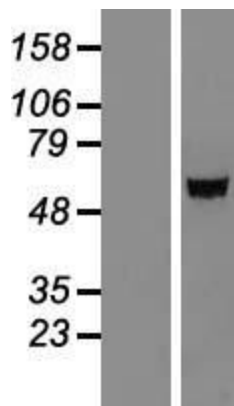
**Locus ID:** 84966

**UniProt ID:** [Q96ID5](#)  
**Cytogenetics:** 1p36.13  
**Domains:** ig, IG  
**Protein Families:** Druggable Genome, Secreted Protein  
**MW:** 51.8 kDa  
**Gene Summary:** This gene encodes a protein which has two immunoglobulin (Ig) domains and is a member of the immunoglobulin superfamily. Proteins in this superfamily are usually found on or in cell membranes and act as receptors in immune response pathways. [provided by RefSeq, Sep 2011]

### Product images:



Circular map for RC203559



Western blot validation of overexpression lysate (Cat# [LY409910]) using anti-DDK antibody (Cat# [TA50011-100]). Left: Cell lysates from untransfected HEK293T cells; Right: Cell lysates from HEK293T cells transfected with RC203559 using transfection reagent MegaTran 2.0 (Cat# [TT210002]).