

Product datasheet for **RC203557**

ZNF234 (NM_006630) Human Tagged ORF Clone

Product data:

Product Type:	Expression Plasmids
Product Name:	ZNF234 (NM_006630) Human Tagged ORF Clone
Tag:	Myc-DDK
Symbol:	ZNF234
Synonyms:	HZF4; ZNF269
Mammalian Cell Selection:	Neomycin
Vector:	pCMV6-Entry (PS100001)
E. coli Selection:	Kanamycin (25 ug/mL)



[View online »](#)

**ORF Nucleotide
Sequence:**

>RC203557 ORF sequence
 Red=Cloning site Blue=ORF Green=Tags(s)

TTTTGTAATACGACTCACTATAGGGCGGCCGGAATTCGTCGACTGGATCCGGTACCGAGGAGATCTGCC
 GCC**CGGATCGCC**

ATGACCACATTCAAGGAGGGACTGACCTTCAAGGATGTGGCTGTGGTCTTCACTGAGGAGGAGCTGGGGC
 TGCTGGACCCTGTCCAGAGGAATCTGTACCAAGATGTGATGCTGGAGAATTTCAGGAACCTGCTGTCACT
 GGGGCATCACCCCTTCAAACATGATGATTCTTTTAGAAAAGGAAAAAAGCTTGATATAATGAAGACA
 GCAACTCAAAGAAAAGGAAATCAGCAGACAAGATCCAAAGTGAGGTGGAGACTGTTCCAGAAGCAGGAC
 GACATGAAGAGCTTTACTGGGGCAAATCTGGAACAGATTGCAAGTGATTAATCAAGTATGAAGACTC
 TATGATAAGTATTTCTCGGTTCCCGAGACAAGGTGATTTGTCCTGCCAGGTTAGGGCAGGACTATATACA
 ACTCACACAGGACAGAAATTTACCAATGTGATGAGTACAAAAATCCTTCACTGATGTCTTCAACTTTG
 ATCTTCATCAACAGTTACTACTCAGGAGAGAAGTCTCATACTGTGATGAGTGTGGAAAAAGCTTCTGTTA
 CATCTCAGCCCTTCATATTCATCAAAGAGTCCACATGGGAGAGAAATGCTATAAGTGTGACGTGTGTGGT
 AAGGAATTTAGTCAGAGCTCACATCTTCAAACATCAGAGAGTCCACACTGTAGAGAAACCATTCAAAT
 GTGTGGAATGTGGGAAAGGCTTCAGTCGTAGATCAACACTTACTGTACATTGCAAATTACTCAGGAGA
 GAAACCTTACAATTGTGAGGAATGTGGAAGGCCCTTCATACATGCTTCCCATCTTCAGGAACATCAGAGA
 ATTCATACTGGGAGAAACCATTCAAATGTGATACATGTGGTAAGAACTCCGTCGTAGATCAGCACTTA
 ATAATCATTGCATGGTCCACACAGGAGAGAAACCATACAAATGTGAGGACTGTGGTAAGTGTTCCTTGT
 TAGCTCAAACCTTCGATCCATCAAAGGTCACACAGGAGAGAAACCTTACAAGTGTGAAGAATGTGGT
 AAGTGTCTTATCAGCCTTCACAATTTCAAGTTCAGGCCCATCGGAGAATCCACTGGAGAGAAACCATACGTA
 GTAAAGTGTGGTAAGGGTTTCATTTACAGTTCAAGTTTTCAAGCCCATCAGGGAGTCCACACTGGAGA
 GAAGCCATACAAATGCAATGAGTGTGGGAAAGACTTCAGAATGAAAATTCATTATCAAGTGCATCTGGTA
 GTCACACAGGGGAAAAACCTATAAATGTGAAGTATGTGGTAAAGCCTTCCGTCAGAGTTCATATCTTA
 AAATCCATCTGAAAGCACATAGTGTACAGAAACCTTTTAAAGTGTGAAGAGTGTGGCAGGGCTTCAATCA
 GAGCTCACGACTTCAGATTCACCAGCTGATCCATACCGGTGAGAAACCATACAAATGTGAAGAGTGCAGGA
 AAGGGATTTAGTCGTAGAGCAGATCTTAAATTCATTGTAGGATCCACACAGGGGAGAAACCATATAATT
 GTGAGGAGTGTGGGAAGGTCTTCAGTCAGGCCTCGCATCTTCAACCCATCAGAGAGTTCACAGTGGGGA
 AAAACCTTTAAATGTGAAGAGTGTGGGAAAGACTTCAGTCGGAGTGCACACCTTCAAGCCCATCAAAAA
 GTCACACTGGAGAAAAGCCATACAAATGTGGGAGTGTGGAAAGGGCTTCAAGTGGAGCTTGAACCTTG
 ACATGCATCAGAGGGTGCACACAGGAGAAAAACCTATACATGTGGGGAGTGTGGGAAAGCACTTCAGTCA
 GGCTCAAGTCTCCAACCTTCATCAGAGTGTCCACACAGGAGAGAAACCATACAAATGTGATGTATGTGGT
 AAAGTCTTCAGTCGGTCTTCAATACAGTATCATAGGCGAGTTCACACTGGGGAAAAACCTTACAAAT
 GTGAGATATGTGGTAAGAGGTTCAAGTGTGGGATCAAAATCTTGAAGTATCACAATAATTCATGCTGCTGG
 TACATTTTATGAAAATGATGAGAATAGTAAGAATCAGAGAGTGTGAGAGGGAGGAGTTCTACAAGG

ACGCGTACGCGGCCGCTCGAGCAGAACTCATCTCAGAAGAGGATCTGGCAGCAAATGATATCCTGGATT
 ACAAGGATGACGACGATAAGGTTTAA

Protein Sequence: >RC203557 protein sequence
Red=Cloning site Green=Tags(s)

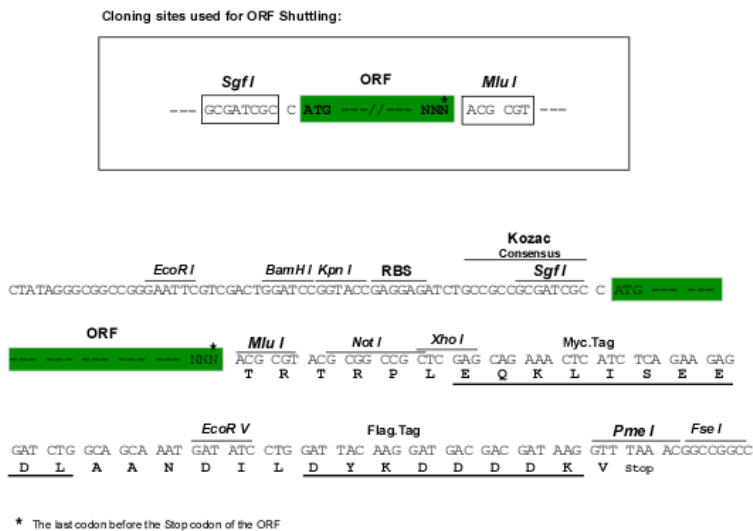
MTTFKEGLTFKDVAVVFTEEELGLLDPVQRNL YQDVMLENFRNLLSVGHHPFKHDVFLLEKEKKLDIMKT
 ATQRKGSADKIQSEVETVPEAGRHEEL YWQIWKQIASDLIKYEDSMISISRFPQQDLSCQVRAGLYT
 THTGQKFYQCDEYKKSFTDVFNFDLHQQLHSGEKSHTCDECGKSFICYISALHIHQRVHMGEKCYKCDVCG
 KEFSQSSHLQTHQRVHTVEKPFKVCVCGKGF SRRSTLTVHCKLHSGEKPYNCEECGRAFIHASHLQEHQR
 IHTGEKPFKCDTCGKNFRRRSALNNHCMVHTGEKPYKCEDCGKCF TCSSNLRHQVHTGEKPYKCEECG
 KCFIQPSQFAHRRRIHTGEKPYVCKVCGKGF IYSSSFQAHQGVHTGEKPYKNECGKSFMRKIHYQVHLV
 VHTGEKPYKCEVCGKAFRQSSYLKIHLKAHSVQKPFKCEECGQGFNQSSRLQIHQLIHTGEKPYKCEECG
 KGF SRRADLKIHCRIHTGEKPYNCEECGVFSQASHLL THQRVHSGEKPFKCEECGKSF SRAHLQAHQK
 VHTGEKPYKCGECGKGFWSLNLDMHQVHTGEKPYTCGECGKHF SQASSLQLHQSVHTGEKPYKCDVCG
 KVFSRSSQLQYHRRVHTGEKPYKEICGKRF SWSNLSVSHKIHAAGTFYENDENSKNIRELSEGGSTR

TRTRPLEQKLISEEDLAANDILDYKDDDDKV

Chromatograms: https://cdn.origene.com/chromatograms/mk6691_e01.zip

Restriction Sites: SgfI-MluI

Cloning Scheme:



ACCN: NM_006630

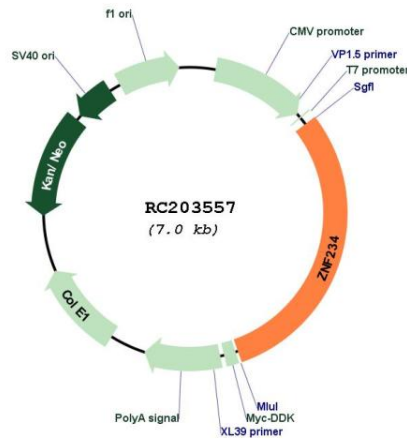
ORF Size: 2100 bp

OTI Disclaimer: The molecular sequence of this clone aligns with the gene accession number as a point of reference only. However, individual transcript sequences of the same gene can differ through naturally occurring variations (e.g. polymorphisms), each with its own valid existence. This clone is substantially in agreement with the reference, but a complete review of all prevailing variants is recommended prior to use. [More info](#)

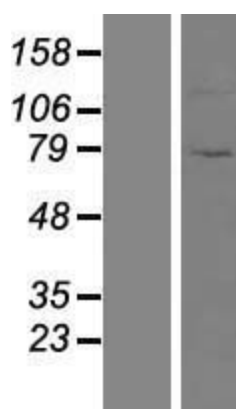
OTI Annotation: This clone was engineered to express the complete ORF with an expression tag. Expression varies depending on the nature of the gene.

- Components:** The ORF clone is ion-exchange column purified and shipped in a 2D barcoded Matrix tube containing 10ug of transfection-ready, dried plasmid DNA (reconstitute with 100 ul of water).
- Reconstitution Method:**
1. Centrifuge at 5,000xg for 5min.
 2. Carefully open the tube and add 100ul of sterile water to dissolve the DNA.
 3. Close the tube and incubate for 10 minutes at room temperature.
 4. Briefly vortex the tube and then do a quick spin (less than 5000xg) to concentrate the liquid at the bottom.
 5. Store the suspended plasmid at -20°C. The DNA is stable for at least one year from date of shipping when stored at -20°C.
- Note:** Plasmids are not sterile. For experiments where strict sterility is required, filtration with 0.22um filter is required.
- RefSeq:** [NM_006630.3](#)
- RefSeq Size:** 4600 bp
- RefSeq ORF:** 2103 bp
- Locus ID:** 10780
- UniProt ID:** [Q14588](#)
- Cytogenetics:** 19q13.31
- Domains:** KRAB, zf-C2H2
- Protein Families:** Transcription Factors
- MW:** 80.6 kDa
- Gene Summary:** May be involved in transcriptional regulation.[UniProtKB/Swiss-Prot Function]

Product images:



Circular map for RC203557



Western blot validation of overexpression lysate (Cat# [LY428520]) using anti-DDK antibody (Cat# [TA50011-100]). Left: Cell lysates from untransfected HEK293T cells; Right: Cell lysates from HEK293T cells transfected with [RC227233] using transfection reagent MegaTran 2.0 (Cat# [TT210002]).